



FOR SUBLEASE

9,275 SF

**11100 Wayzata
Blvd, Suite 450
Minnetonka**



**CUSHMAN &
WAKEFIELD**

SUITE HIGHLIGHTS



**SUBLEASE TERM
THROUGH 4/30/2028**



**SUBLEASE RATE
NEGOTIABLE**



**PRIVATE RECEPTION
AREA**



**DEDICATED
BREAK ROOM**



**19 TOTAL
PRIVATE OFFICES**



**DEDICATED
TRAINING AREA**

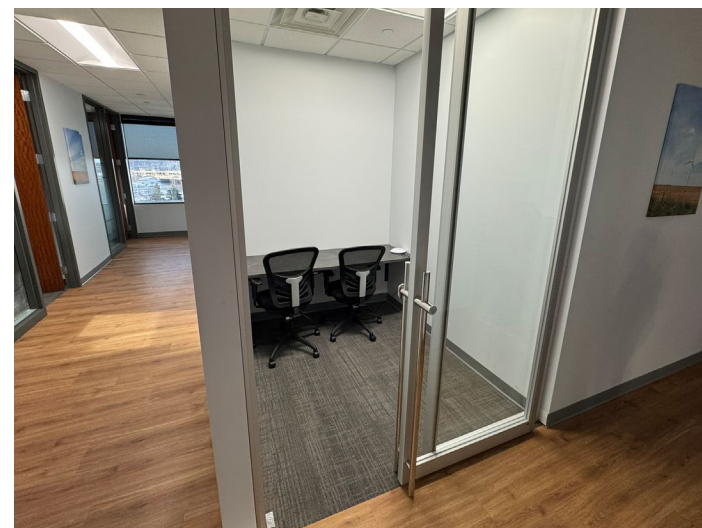


**OPEN CUBE
WORK SPACES**

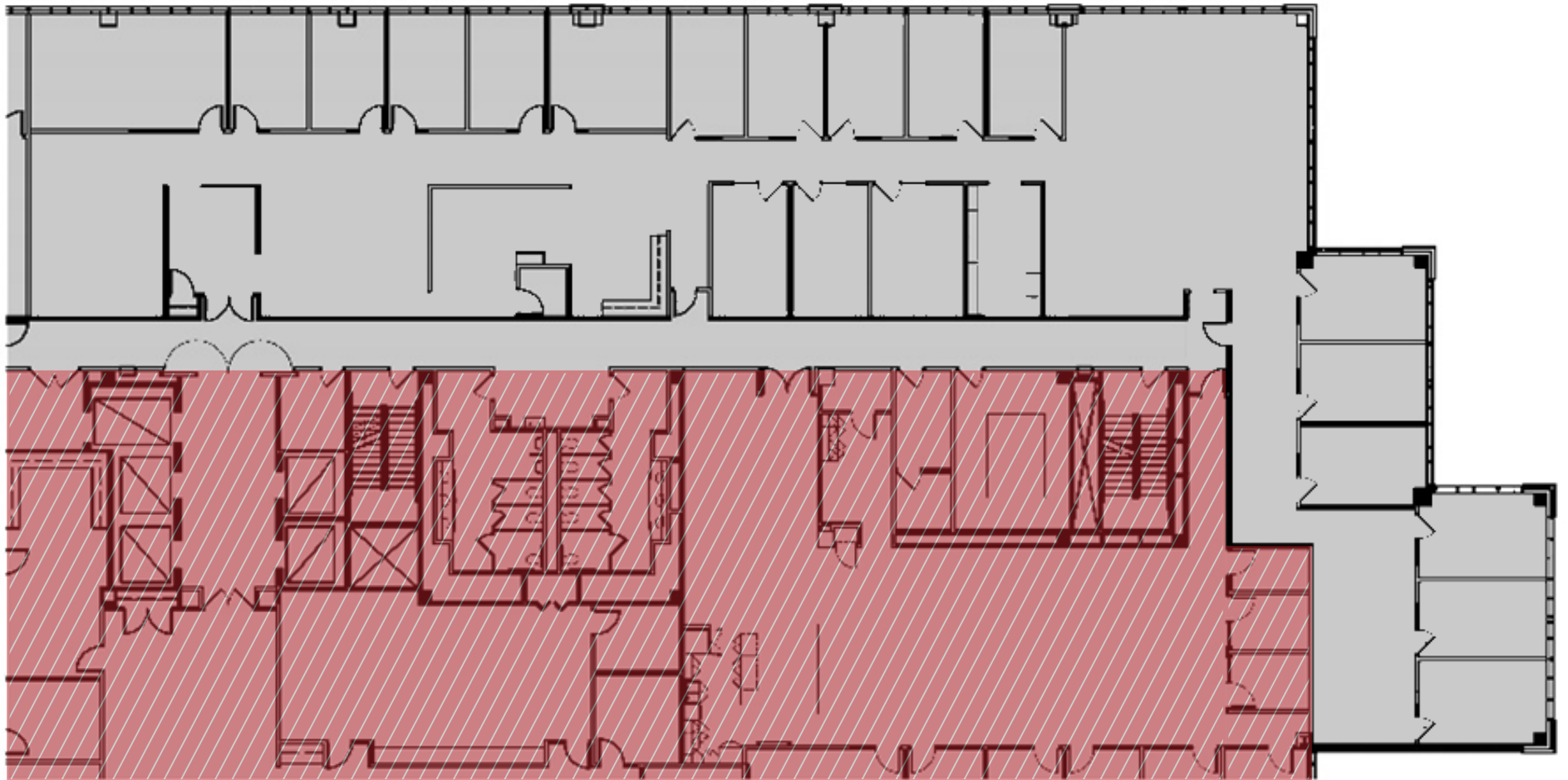


**PHONE AND HUDDLE
ROOMS**

SUITE PHOTOGRAPHY



SUITE FLOOR PLAN



BUILDING FEATURES



11100 Wayzata Blvd, Minnetonka

BUILDING ADDRESS

286,855 RBA

TOTAL BUILDING SIZE

4.00/1,000

PARKING RATIO

1998/2012

BUILT/RENOVATED

8

TOTAL STORIES

CURRENT AMENITIES



ON-SITE CAFE
SERVING BREAKFAST,
LUNCH AND CATERING



ELECTRIC
VEHICLE CHARGING
STATIONS



MEETING SPACES WITH
STATE OF ART
TECHNOLOGY



COVERED &
EXECUTIVE PARKING



BEVERAGE STATION
IN LOBBY



GOLF
LOUNGE

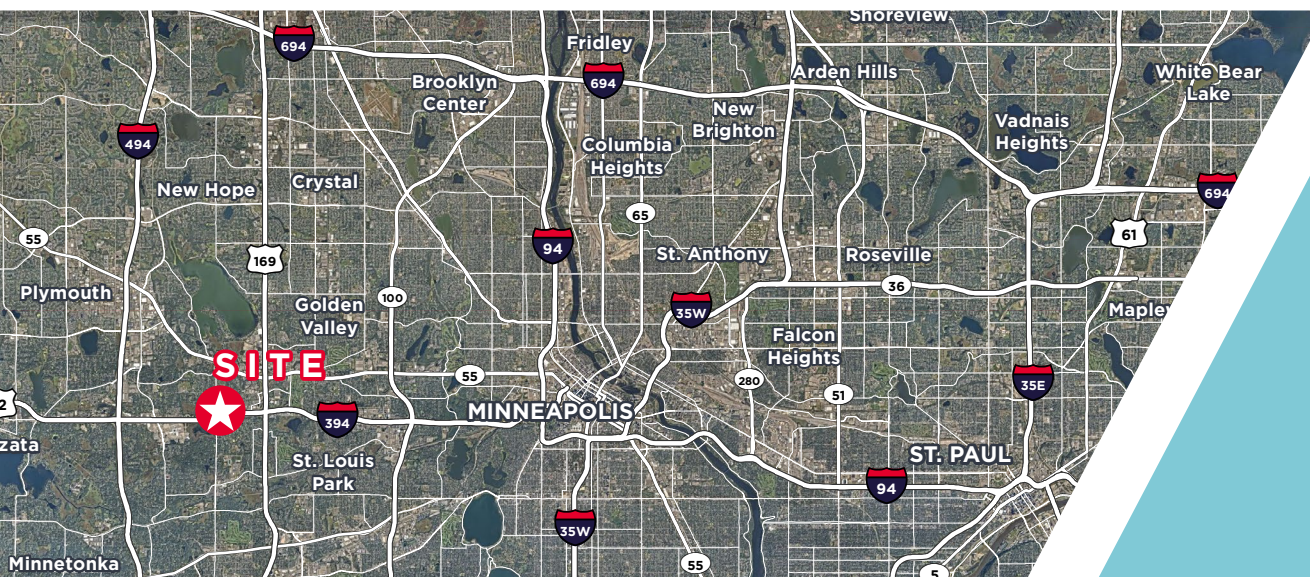


OUTDOOR SPACES WITH
GAMES AND FIRE PITS



FITNESS
CENTER

PROPERTY AERIAL MAP



Lexis Lowell
+1 952 820 8758
lexis.lowell@cushwake.com

