



**CUSHMAN &  
WAKEFIELD**

Southwestern Ontario

**FOR LEASE**

**1565 NORTH ROUTLEDGE PARK UNIT 3**

*London, ON*



## PRIME MULTI-UNIT OFFICE/LIGHT INDUSTRIAL BUILDING

### ASKING RENT

**\$16.00  
PSF NET**

### ADDITIONAL RENT

**\$6.50  
PSF (EST.)**

### AVAILABLE SPACE

**1,090  
SF**

**TYLER DESJARDINE**

*Sales Representative*

519 438 5403

[tyler.desjardine@cushwakeswo.com](mailto:tyler.desjardine@cushwakeswo.com)

**CUSHMAN & WAKEFIELD  
SOUTHWESTERN ONTARIO**  
850 Medway Park Dr, Suite 201  
London, Ontario N6G 5G6  
[www.cushwakeswo.com](http://www.cushwakeswo.com)

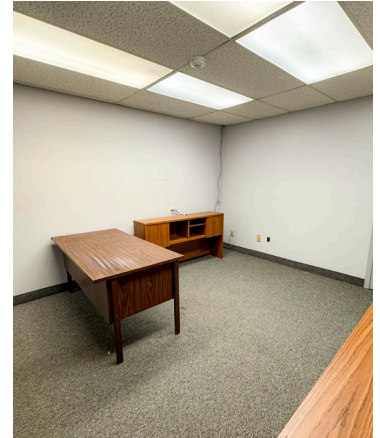
©2026 Cushman & Wakefield Southwestern Ontario, Real Estate Brokerage, Independently Owned and Operated. A Member of the Cushman & Wakefield Alliance.  
This information has been obtained from sources believed to be reliable but has not been verified. No warranty or representation, express or implied, is made as to the condition of the property (or properties) referenced herein or as to the accuracy or completeness of the information contained herein, and same is submitted subject to errors, omissions, change of price, rental or other conditions, withdrawal without notice, and to any special listing conditions imposed by the property owner(s). Any projections, opinions or estimates are subject to uncertainty and do not signify current or future property performance. All rights reserved.



# ABOUT THE PROPERTY

Prime multi-unit office/light industrial/commercial building for lease in northwest London. Located on North Routledge Park, just off Hyde Park Road in northwest London.

- **Tenant pays their own separately metered utilities**
- **Zoning:** LI1(3)/LI3 - permits a wide range of uses
- **Parking:** Available on-site for free
- Available: Immediately
- Nicely finished office space
- Highly desirable area in the city of London



**TYLER DESJARDINE**

*Sales Representative*

519 438 5403

tyler.desjardine@cushwakeswo.com

**CUSHMAN & WAKEFIELD**  
**SOUTHWESTERN ONTARIO**  
850 Medway Park Dr, Suite 201  
London, Ontario N6G 5G6  
[www.cushwakeswo.com](http://www.cushwakeswo.com)

 **CUSHMAN & WAKEFIELD**  
Southwestern Ontario

©2026 Cushman & Wakefield Southwestern Ontario, Real Estate Brokerage, Independently Owned and Operated. A Member of the Cushman & Wakefield Alliance. This information has been obtained from sources believed to be reliable but has not been verified. No warranty or representation, express or implied, is made as to the condition of the property (or properties) referenced herein or as to the accuracy or completeness of the information contained herein, and same is submitted subject to errors, omissions, change of price, rental or other conditions, withdrawal without notice, and to any special listing conditions imposed by the property owner(s). Any projections, opinions or estimates are subject to uncertainty and do not signify current or future property performance. All rights reserved.