

23899 FOLEY ST., HAYWARD, CA



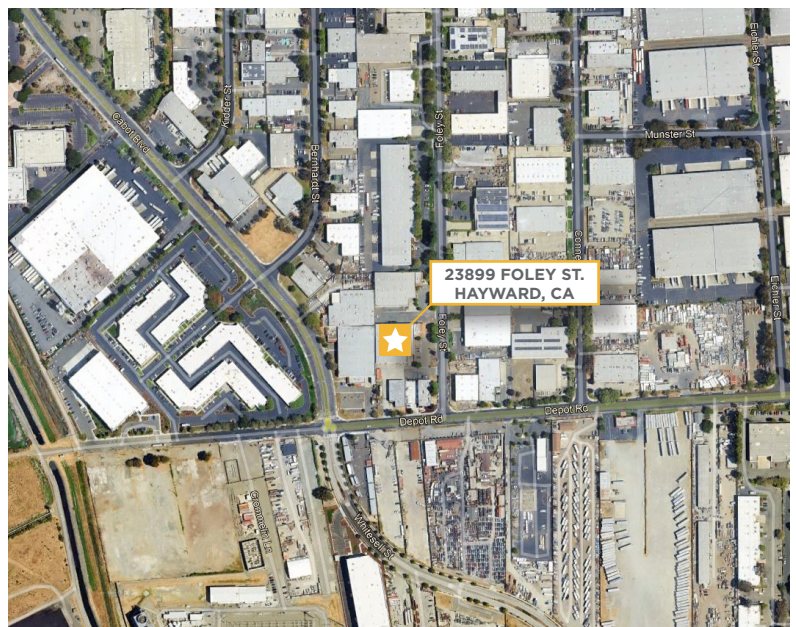
DOCK-HIGH WAREHOUSE
FOR LEASE 4,170 SF

PROPERTY HIGHLIGHTS

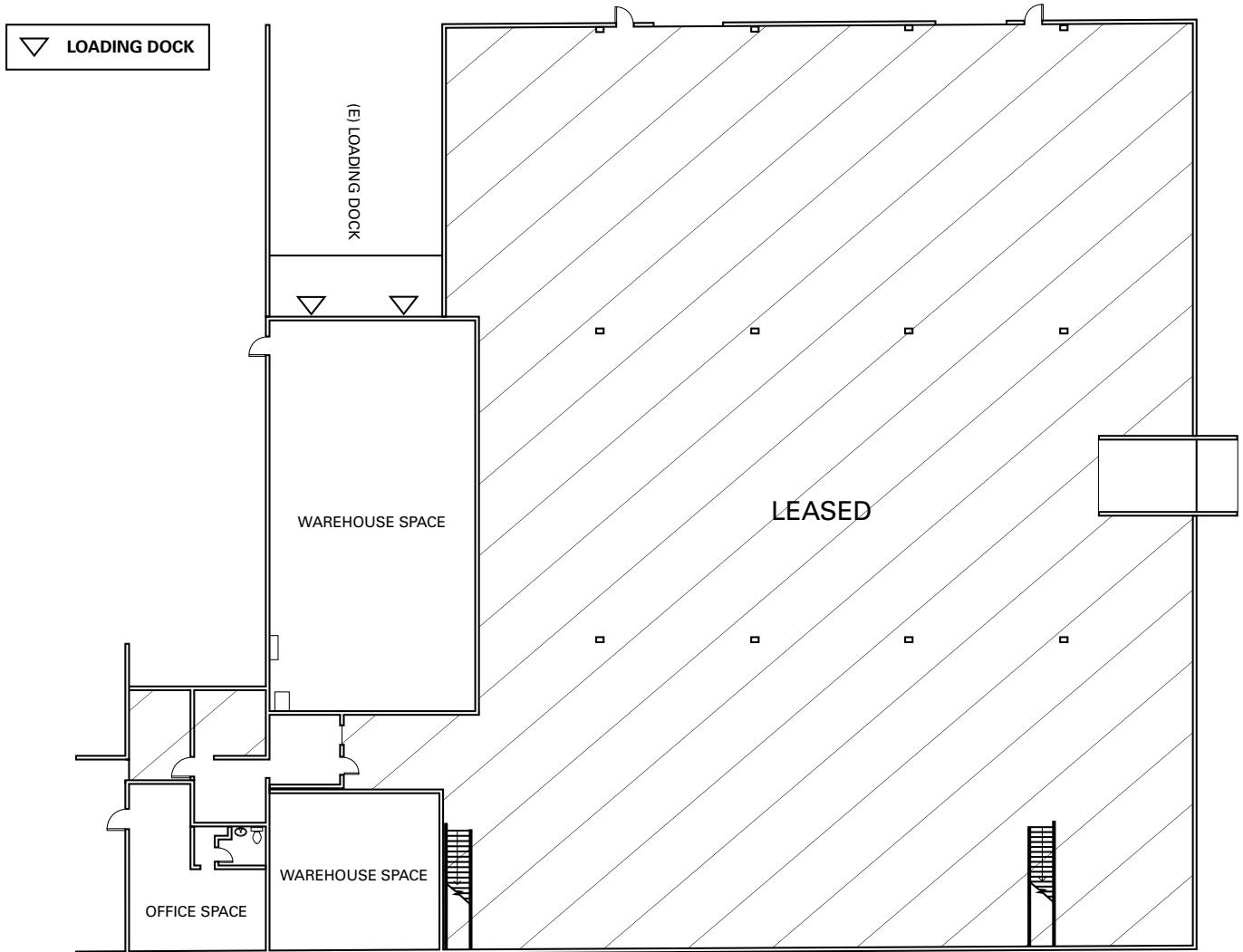
- 22' Clear Height
- Fully Sprinklered
- 2 Dock High Loading Doors

Area: 4,170 SF Total
580 SF of Office

Asking Rate: ~~\$1.40 Gross PSF~~
\$1.20 IG PSF



FLOOR PLAN



CONTACT

JACKSON HAGGLUND

Director

+1 925 978 3142

jackson.hagglund@cushwake.com

LIC #02138597

