

185

WILLIAM SMITH
DRIVE, UNIT 4

WHITBY ON

WHITE CAP
CONSTRUCTION & SAFETY SUPPLIES

Industrial
For Lease
23,699 sf.



**CUSHMAN &
WAKEFIELD**



// BUILDING SPECS

| | |
|---------------|--------------------------------------|
| Size: | 23,699 sf. |
| Office: | 3,381 sf. |
| Clear Height: | 30 ft. |
| Shipping: | 4 Truck Level & 1 Drive-In Door |
| Net Rent: | \$15.95 psf. |
| TMI: | \$4.57 psf. |
| Timing: | Available May 1 st , 2026 |

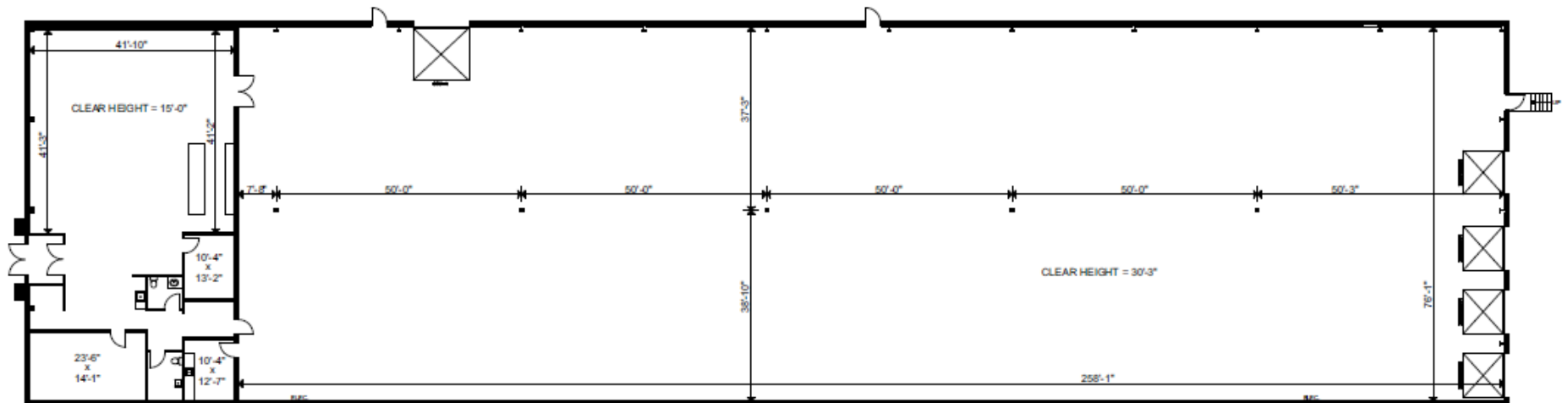
COMMENTS

- High Quality Industrial Unit in Prime Whitby Location
- Bright, Clean, Turn-Key Unit
- Office Area Currently Used as Showroom Space
- Excellent Access to Highway 401 at Thickson Road
- Efficient Layout
- No Recreational Uses or Automotive Repair / Auto Body

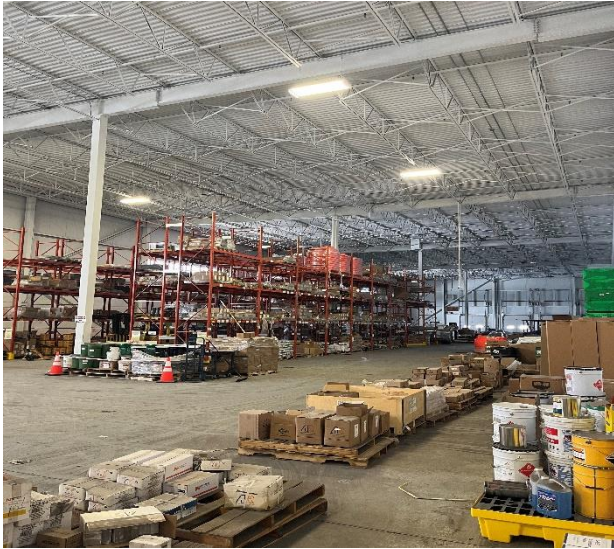


185 WILLIAM SMITH DRIVE,
Unit 4, Whitby ON

// FLOOR PLAN



// PHOTO GALLERY



Warehouse Space



Showroom



Drive-In Shipping Door



Boardroom



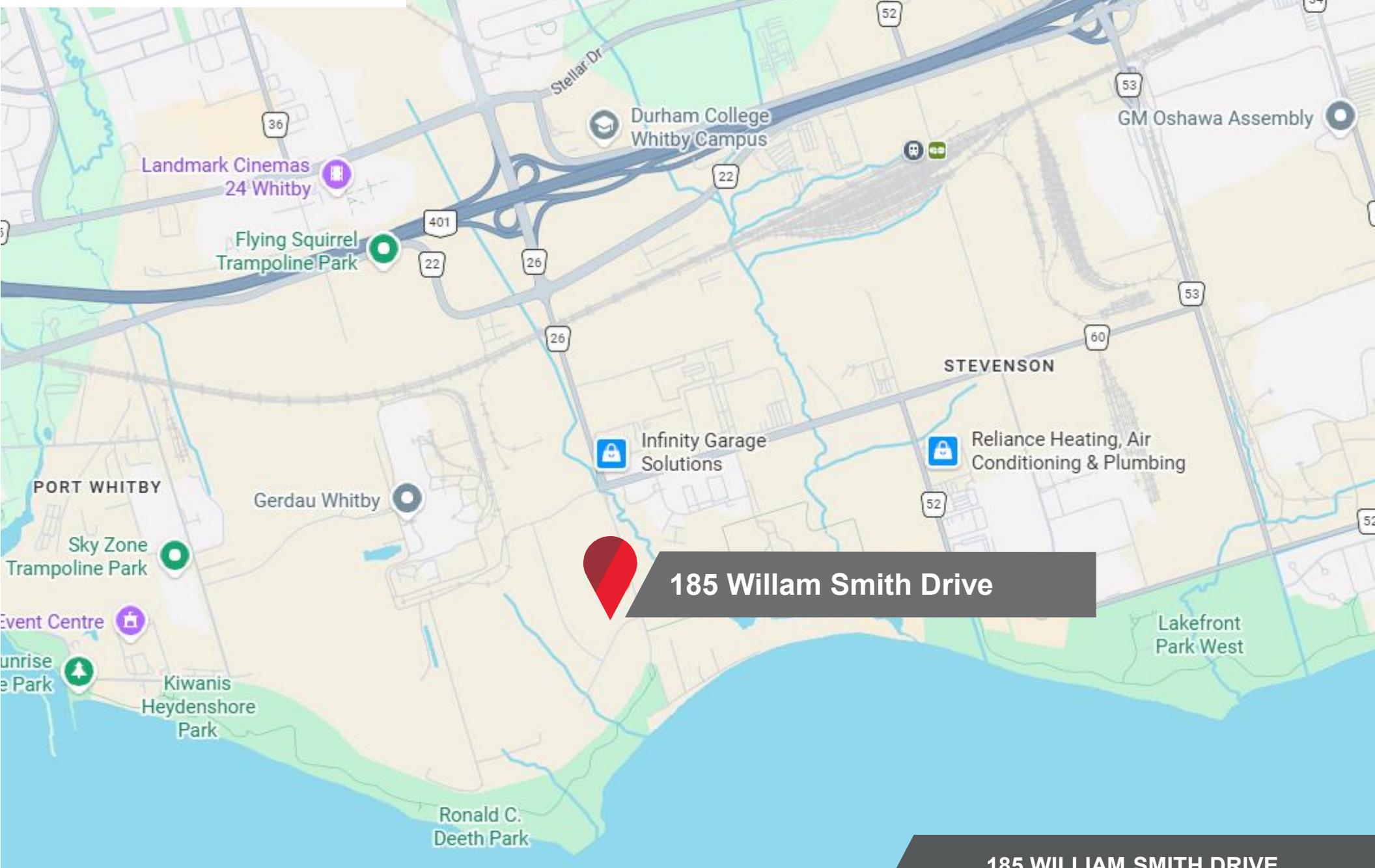
Office Space



Kitchen Area

185 WILLIAM SMITH DRIVE,
Unit 4, Whitby ON

// LOCATION



185 William Smith Drive

// 185 WILLIAM SMITH DRIVE,
Unit 4, Whitby ON



// CONTACT

MIKE BROWN*
Senior Vice President
416 756 5415
mike.brown@cushwake.com

SEAN SPIERS*
Vice President
416 494 9625
sean.spiers@cushwake.com

©2025 Cushman & Wakefield. All rights reserved. The information contained in this communication is strictly confidential. This information has been obtained from sources believed to be reliable but has not been verified. NO WARRANTY OR REPRESENTATION, EXPRESS OR IMPLIED, IS MADE AS TO THE CONDITION OF THE PROPERTY (OR PROPERTIES) REFERENCED HEREIN OR AS TO THE ACCURACY OR COMPLETENESS OF THE INFORMATION CONTAINED HEREIN, AND SAME IS SUBMITTED SUBJECT TO ERRORS, OMISSIONS, CHANGE OF PRICE, RENTAL OR OTHER CONDITIONS, WITHDRAWAL WITHOUT NOTICE, AND TO ANY SPECIAL LISTING CONDITIONS IMPOSED BY THE PROPERTY OWNER(S). ANY PROJECTIONS, OPINIONS OR ESTIMATES ARE SUBJECT TO UNCERTAINTY AND DO NOT SIGNIFY CURRENT OR FUTURE PROPERTY PERFORMANCE. * Sales Representative