



**CUSHMAN &
WAKEFIELD**



**FOR SUBLEASE
NEGOTIABLE TERM
(2/29/2028 EXP)**

4251 KIPLING STREET, SUITE 305
WHEAT RIDGE, COLORADO 80033

**IMMEDIATE OCCUPANCY THROUGH
FEBRUARY 2028 (NEGOTIABLE)**

PROPERTY OVERVIEW

Plug & Play, Flexible sublease/coworking office within established counseling suite. The space is furnished, sublandlord willing to take out FF&E, if desired.

PROPERTY DETAILS

SIZE	100 SF
AVAILABLE	Immediately
PARKING	3.00:1,000 SF
TERM	2/29/2028 (Negotiable)
SUBLEASE RATE	\$800/Month
GENERAL OFFICE AMENITIES	Fridge, Coffee Bar, Wi-Fi, Printer & Waiting Area

4251 KIPLING STREET, SUITE 305
WHEAT RIDGE, COLORADO 80033

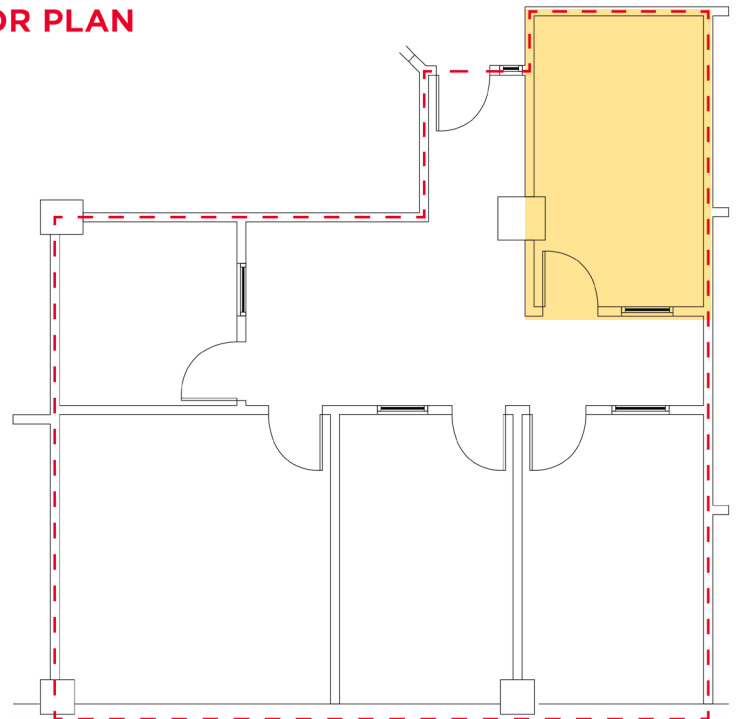


**4251
KIPLING ST**

W. 44th Avenue

Kipling Street

FLOOR PLAN



For more information, please contact:

CARL MESKER / Director / +1 303 312 1900 Direct / +1 415 320 4776 Mobiles / carl.mesker@cushwake.com

1401 Lawrence Street, Suite 1100 / Denver, Colorado 80202 / PHONE +1 303 292 3700 / FAX +1 303 534 8270 / cushmanwakefield.com