

50

PROGRESS DRIVE

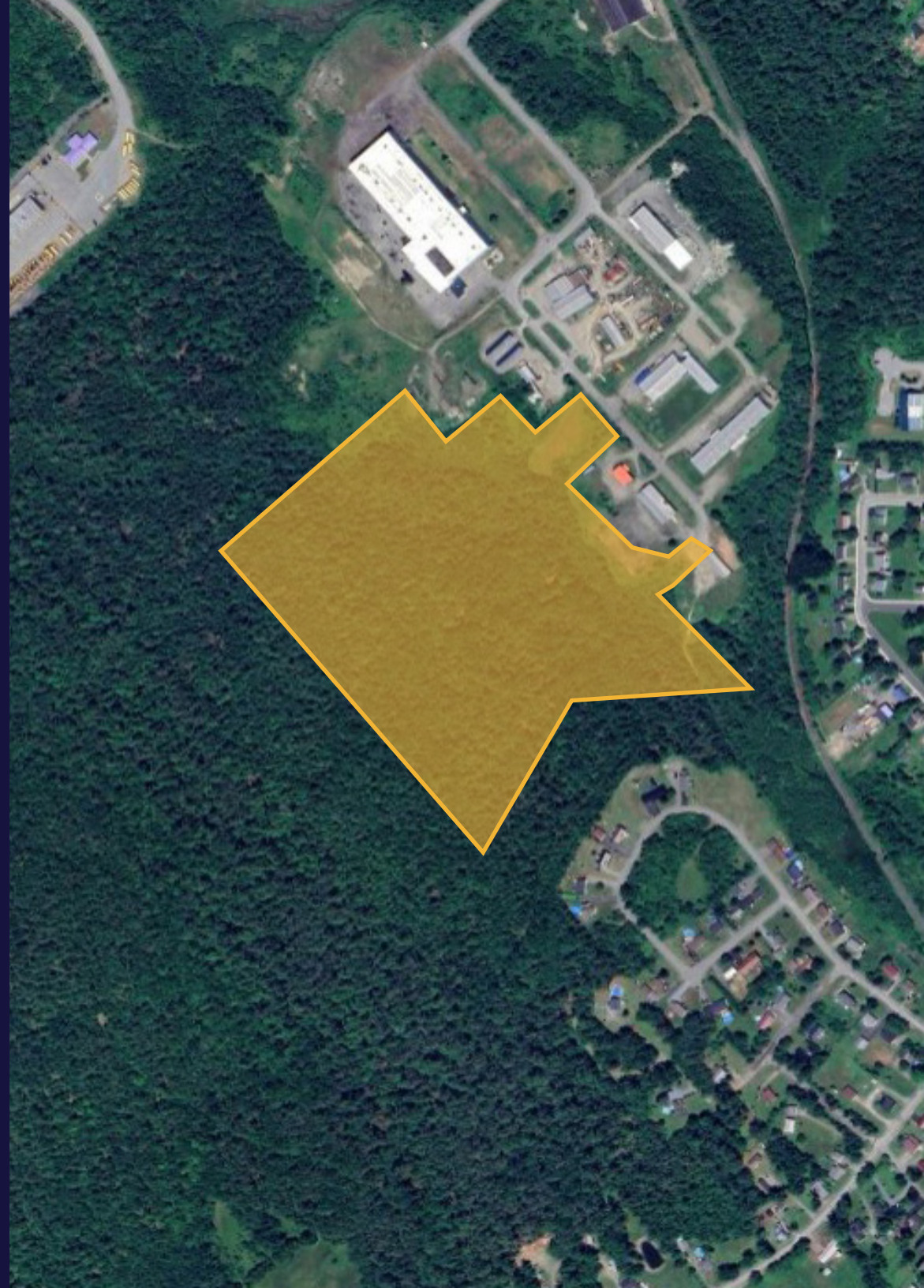
St. Stephen, NB

**+/- 31 Acres of Land
For Sale**



**CUSHMAN &
WAKEFIELD**
Atlantic

Better never settles



OVERVIEW

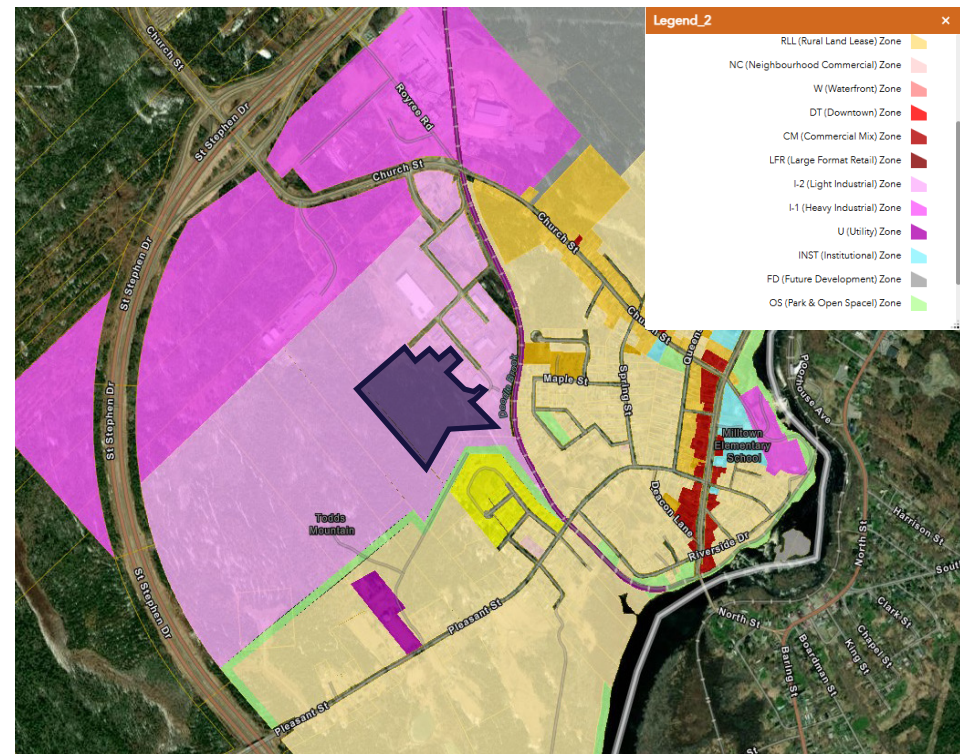
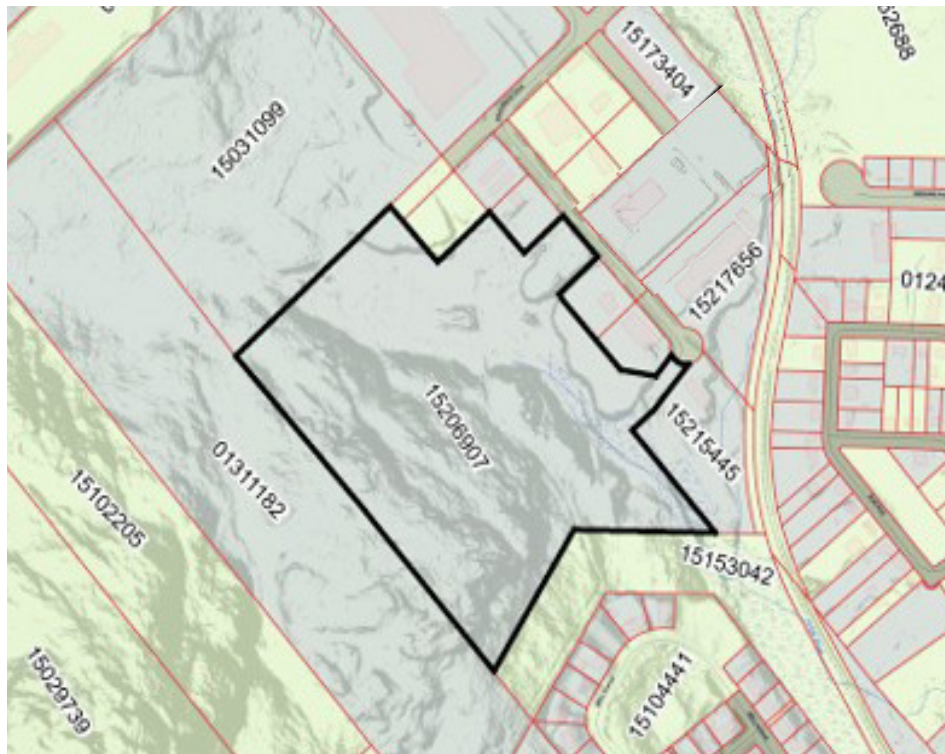
LOCATION:	St. Stephen NB	PID#	Portion of 15206907
ADDRESS:	50 Progress Drive	ZONING:	L2 Light Industrial
SITE AREA:	+/- 31 Acres		
LIST PRICE:	\$387,500		

Location Information

Located in St. Stephen's expanding Business Park, which is directly served by a branch of NB Southern Railway, and is 1 minute from the 4 lane highway connecting the border to Saint John. The Municipality of St. Stephen is right on the border with the USA, offering direct highway access from northern Maine to the Maritime provinces. This property is 28 km from the deep water port of Bayside and 126 km from the Port of Saint John.

Key Details

- +/- 31 acres of land available for sale in St. Stephen, NB
- The property is a candidate for residential development, subject to rezoning. It is situated between an industrial park and a residential neighbourhood.



50

PROGRESS DRIVE

Stephanie Turner

Associate Vice President
+1 506 333 3442
sturner@cwatlantic.com

Brock Turner

Commercial Real Estate Advisor
+1 506 608 8747
bturner@cwatlantic.com

Office

1 Market Square, Suite N305
Saint John, NB E2L 4Z6
+1 506 693 6876
cwatlantic.com

©2025 Cushman & Wakefield. All rights reserved. The information contained in this communication is strictly confidential. This information has been obtained from sources believed to be reliable but has not been verified. NO WARRANTY OR REPRESENTATION, EXPRESS OR IMPLIED, IS MADE AS TO THE CONDITION OF THE PROPERTY (OR PROPERTIES) REFERENCED HEREIN OR AS TO THE ACCURACY OR COMPLETENESS OF THE INFORMATION CONTAINED HEREIN, AND SAME IS SUBMITTED SUBJECT TO ERRORS, OMISSIONS, CHANGE OF PRICE, RENTAL OR OTHER CONDITIONS, WITHDRAWAL WITHOUT NOTICE, AND TO ANY SPECIAL LISTING CONDITIONS IMPOSED BY THE PROPERTY OWNER(S). ANY PROJECTIONS, OPINIONS OR ESTIMATES ARE SUBJECT TO UNCERTAINTY AND DO NOT SIGNIFY CURRENT OR FUTURE PROPERTY PERFORMANCE.

