

PLUG-N-PLAY OFFICE FOR SUBLEASE

SUITE 100 - ±12,324 SF

919
E HILLSDALE
BOULEVARD

FOSTER CITY, CA 94404



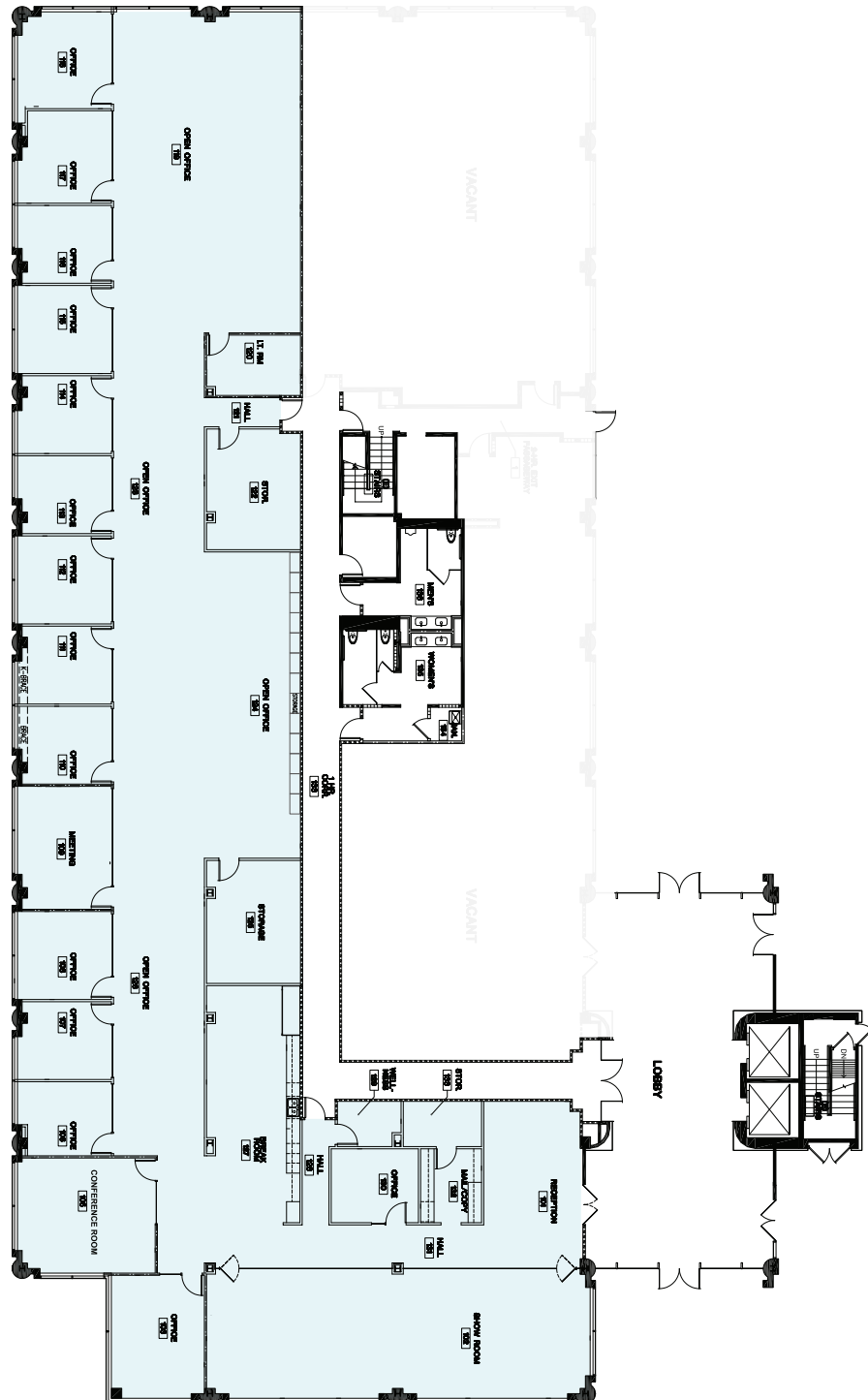
BUILDING HIGHLIGHTS

- Available space: ±12,324 SF
- Asking Rate: \$3.75/SF/Mo Full Service
- Reception area
- Break area
- 27 workstations
- 14 private offices
- Large showroom/multi-purpose room
- 2 conference rooms
- 2 storage rooms
- Wellness room
- Furnished and wired
- Lease expiration date: August 31, 2029
- Surface and covered parking
- Free dedicated shuttle to Caltrain Station
- Access to highways 92, 101, and San Mateo Bridge
- 15 minutes to SFO
- On-site fitness center, lockers & showers

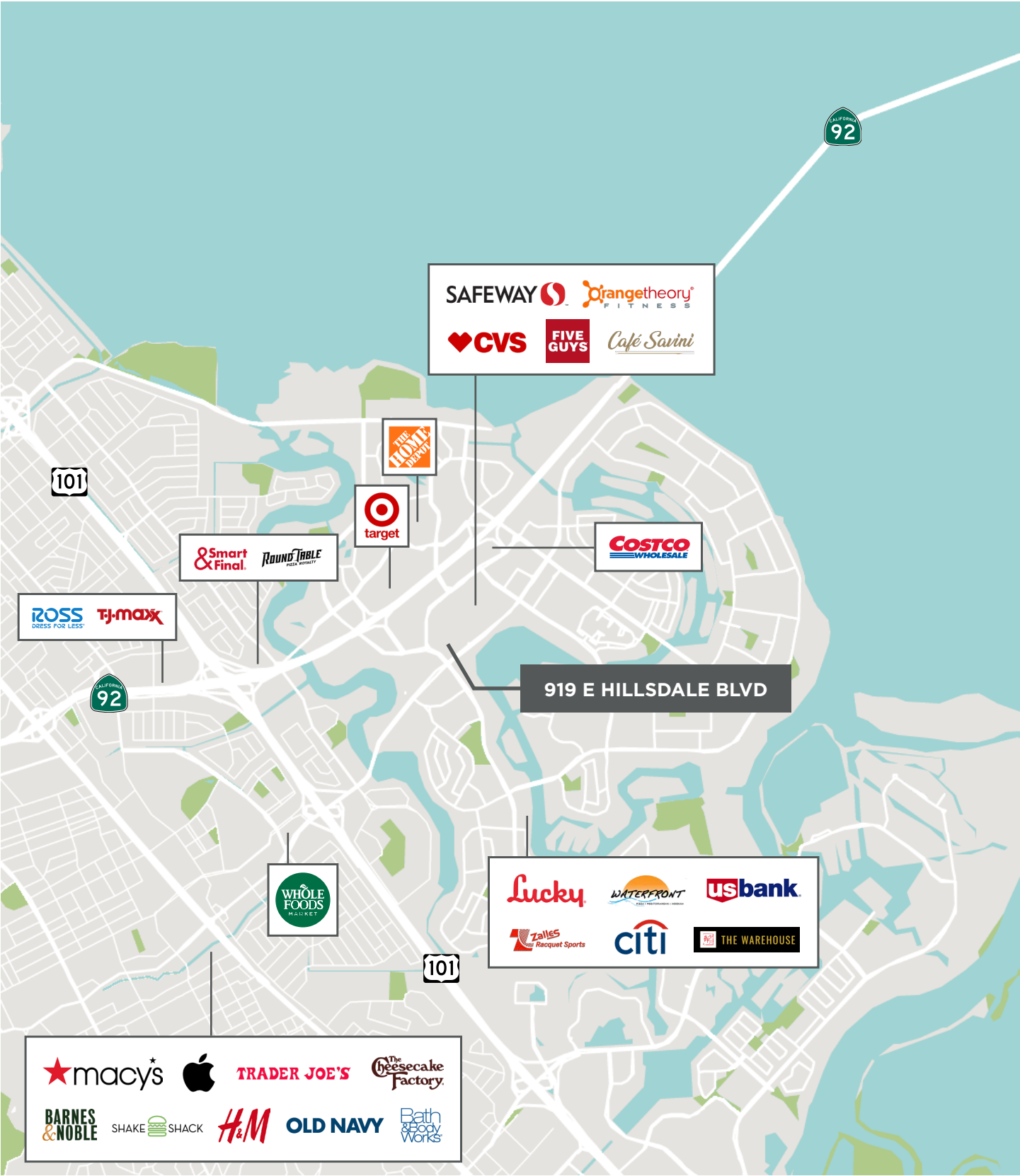


FLOOR PLAN

SUITE 100 - ±12,324 SF



AMENITY MAP





JAY LESLIE

Executive Director
+1 650 576 2888
jay.leslie@cushwake.com
Lic #01244555

WYATT THOMPSON

Associate
+1 510 295 9313
wyatt.thompson@cushwake.com
Lic #02253133

1350 Old Bayshore Highway
Burlingame, CA 94010

