

25 HEDGEWOOD DRIVE

Moncton, New Brunswick

1,400 SF COMMERCIAL SPACE AVAILABLE | FOR LEASE



Jamie Smith / Senior Associate / 506 269 9914 / jsmith@cwatlantic.com
Moncton Office / 77 Vaughan Harvery Blvd Suite 402 / Moncton NB / 506 387 6925



**CUSHMAN &
WAKEFIELD**
Atlantic

© 2025 Cushman & Wakefield. All rights reserved. The information contained in this communication is strictly confidential. This information has been obtained from sources believed to be reliable but has not been verified. NO WARRANTY OR REPRESENTATION, EXPRESS OR IMPLIED, IS MADE AS TO THE CONDITION OF THE PROPERTY (OR PROPERTIES) REFERENCED HEREIN OR AS TO THE ACCURACY OR COMPLETENESS OF THE INFORMATION CONTAINED HEREIN, AND SAME IS SUBMITTED SUBJECT TO ERRORS, OMISSIONS, CHANGE OF PRICE, RENTAL OR OTHER CONDITIONS, WITHDRAWAL WITHOUT NOTICE, AND TO ANY SPECIAL LISTING CONDITIONS IMPOSED BY THE PROPERTY OWNER(S). ANY PROJECTIONS, OPINIONS OR ESTIMATES ARE SUBJECT TO UNCERTAINTY AND DO NOT SIGNIFY CURRENT OR FUTURE PROPERTY PERFORMANCE.

CWATLANTIC.COM

25 HEDGEWOOD DRIVE

Moncton, New Brunswick

OVERVIEW

PRIME COMMERCIAL SPACE FOR LEASE

THE PROPERTY

Positioned at 25 Hedgewood Drive, this commercial space presents a rare lease opportunity in Moncton's highly convenient commercial area. Located just off Main Street, this space is strategically situated between the Gunningsville Bridge and the former causeway bridge, providing easy access to both Moncton and Riverview. This functional and flexible two-level space totals 1,400 SF and includes plenty of on-site parking. It's an ideal choice for businesses seeking a high-utility location without compromising on accessibility or convenience.

HIGHLIGHTS

- Featuring **1,400 sf** of flexible space
- The existing configuration features separate office areas on both the upper and lower levels, but the layout can be easily modified
- Prime location in the heart of Moncton with exceptional access to neighbouring towns and highways
- The property features an exceptional, fully paved parking lot and front area, providing ample space for both customers and staff.

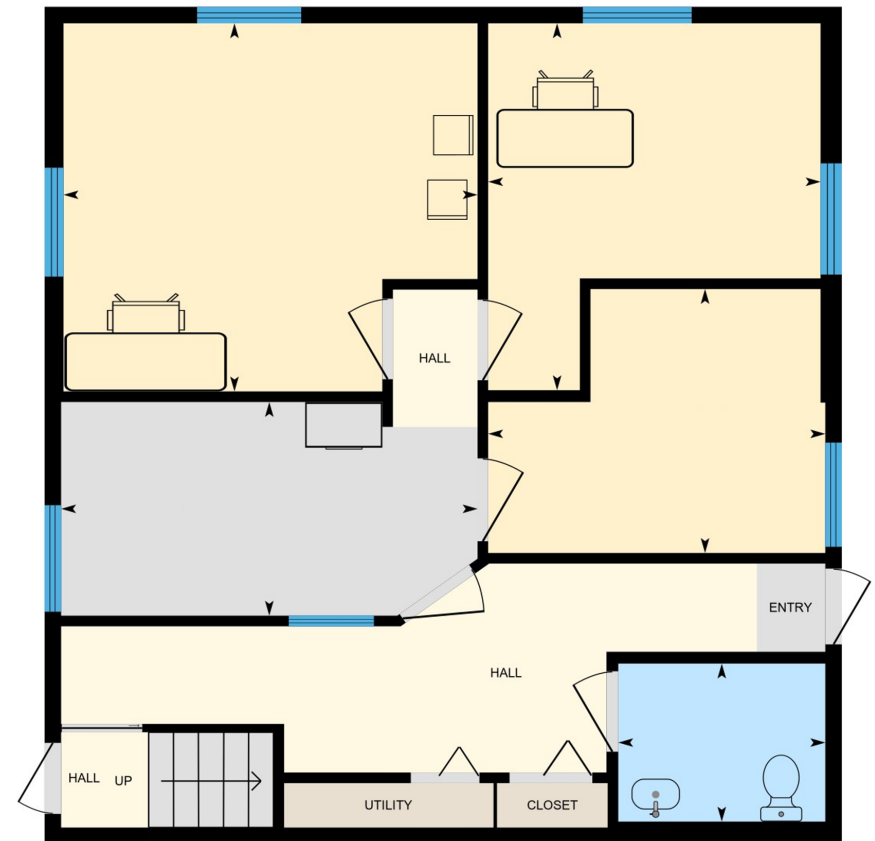


25 HEDGEWOOD DRIVE

Moncton, New Brunswick

FLOOR PLAN

PRIME COMMERCIAL SPACE FOR LEASE



[VIRTUAL TOUR](#)

25 HEDGEWOOD DRIVE

Moncton, New Brunswick

LOCATION OVERVIEW



The property's location provides exceptional connectivity to all of Moncton. You're just minutes away from the city's industrial park and Edinburgh Drive, while also offering quick access to downtown Moncton and St. George Street. This strategic position also puts you just minutes from access to Highway 15, making it an ideal hub for businesses that need to connect with all parts of the city and beyond.

25 HEDGEWOOD DRIVE

Moncton, New Brunswick

PHOTOS

PRIME COMMERCIAL SPACE FOR LEASE



25 HEDGEWOOD DRIVE

Moncton, New Brunswick

Jamie Smith / Senior Associate / 506 269 9914 / jsmith@cwatlantic.com
Moncton Office / 77 Vaughan Harvery Blvd Suite 402 / Moncton NB / 506 387 6925

CWATLANTIC.COM

©2025 Cushman & Wakefield. All rights reserved. The information contained in this communication is strictly confidential. This information has been obtained from sources believed to be reliable but has not been verified. NO WARRANTY OR REPRESENTATION, EXPRESS OR IMPLIED, IS MADE AS TO THE CONDITION OF THE PROPERTY (OR PROPERTIES) REFERENCED HEREIN OR AS TO THE ACCURACY OR COMPLETENESS OF THE INFORMATION CONTAINED HEREIN, AND SAME IS SUBMITTED SUBJECT TO ERRORS, OMISSIONS, CHANGE OF PRICE, RENTAL OR OTHER CONDITIONS, WITHDRAWAL WITHOUT NOTICE, AND TO ANY SPECIAL LISTING CONDITIONS IMPOSED BY THE PROPERTY OWNER(S). ANY PROJECTIONS, OPINIONS OR ESTIMATES ARE SUBJECT TO UNCERTAINTY AND DO NOT SIGNIFY CURRENT OR FUTURE PROPERTY PERFORMANCE.