

2,103 SF AVAILABLE

# BRIGGS PLACE

4636 DODGE STREET, OMAHA, NE 68132



**RETAIL SPACE AVAILABLE FOR SUBLEASE**



# BUILDING HIGHLIGHTS

## SUBLEASE RATE

**\$12.92**

CONTACT LISTING AGENT FOR  
BASE RENT SCHEDULE

## TOTAL AVAILABLE

**2,103 SF**

## BUILDING SIZE

**9,240 SF**

## YEAR BUILT

**2002**

## SITE AREA

**36,316 SF**

## ZONING

**GENERAL  
COMMERCIAL**

## PARKING

**4.67:1,000 SF**

## OPERATING EXPENSES

**\$6.64 PSF**



Single story retail building with six individual suites, and large tenant signage with great visibility to over 36,000 cars per day! Co-tenants include: EZ Money Check Cashing, Alohma Midtown and Pro Move. Located on the northeast corner of 46th and Dodge Street.

## NEIGHBORHOOD DEMOGRAPHICS



POPULATION



MEDIAN  
HOUSEHOLD INCOME

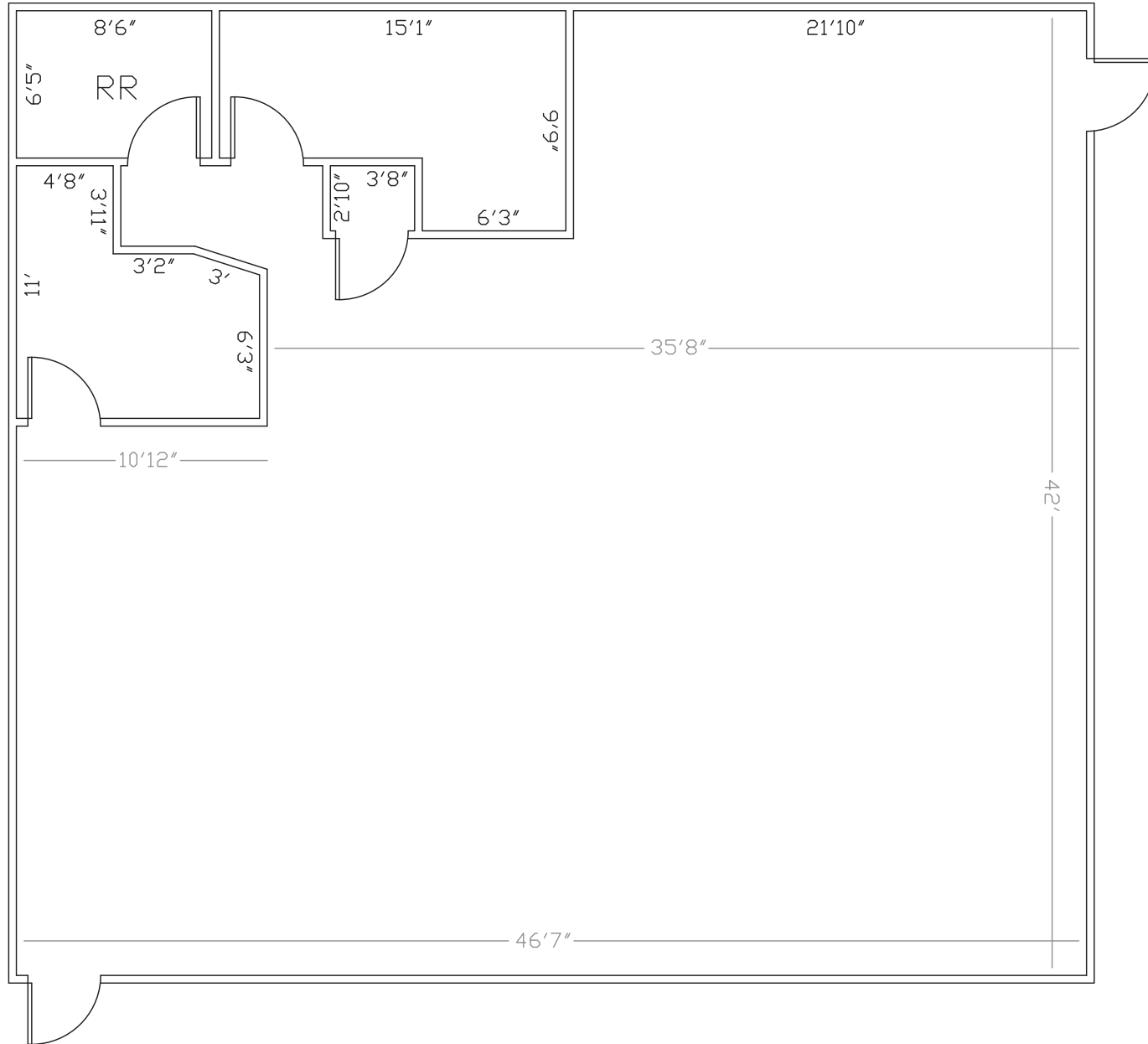


NUMBER OF  
HOUSEHOLDS

1 Mile	21,441	\$63,681	10,706
3 Miles	147,607	\$61,108	63,829
5 Miles	294,687	\$62,763	120,599

# FLOOR PLAN

2,103 SF



# PROPERTY AERIAL



FOR MORE INFORMATION, PLEASE CONTACT:

**Trey MacKnight**

Associate  
+1 402 548 4079  
trey.macknight@lundco.com

**Holly Jones**

Director of Retail Services  
+1 402 548 4038  
holly.jones@lundco.com



*Independently Owned and Operated / A Member of the Cushman & Wakefield Alliance*

©2026 Cushman & Wakefield. All rights reserved. The information contained in this communication is strictly confidential. This information has been obtained from sources believed to be reliable but has not been verified. NO WARRANTY OR REPRESENTATION, EXPRESS OR IMPLIED, IS MADE AS TO THE CONDITION OF THE PROPERTY (OR PROPERTIES) REFERENCED HEREIN OR AS TO THE ACCURACY OR COMPLETENESS OF THE INFORMATION CONTAINED HEREIN, AND SAME IS SUBMITTED SUBJECT TO ERRORS, OMISSIONS, CHANGE OF PRICE, RENTAL OR OTHER CONDITIONS, WITHDRAWAL WITHOUT NOTICE, AND TO ANY SPECIAL LISTING CONDITIONS IMPOSED BY THE PROPERTY OWNER(S). ANY PROJECTIONS, OPINIONS OR ESTIMATES ARE SUBJECT TO UNCERTAINTY AND DO NOT SIGNIFY CURRENT OR FUTURE PROPERTY PERFORMANCE.

