



AVAILABLE FOR LEASE

270 EAST CENTRAL

SAN BERNARDINO, CA

TAL SIGLAR, SIOR, CCIM
909 942 4680
tal.siglar@cushwake.com
Lic. #01229412

PATRICK CASANI
626 379 7145
patrick.casani@cushwake.com
Lic. #02223488

PROPERTY

PROPERTY FEATURES

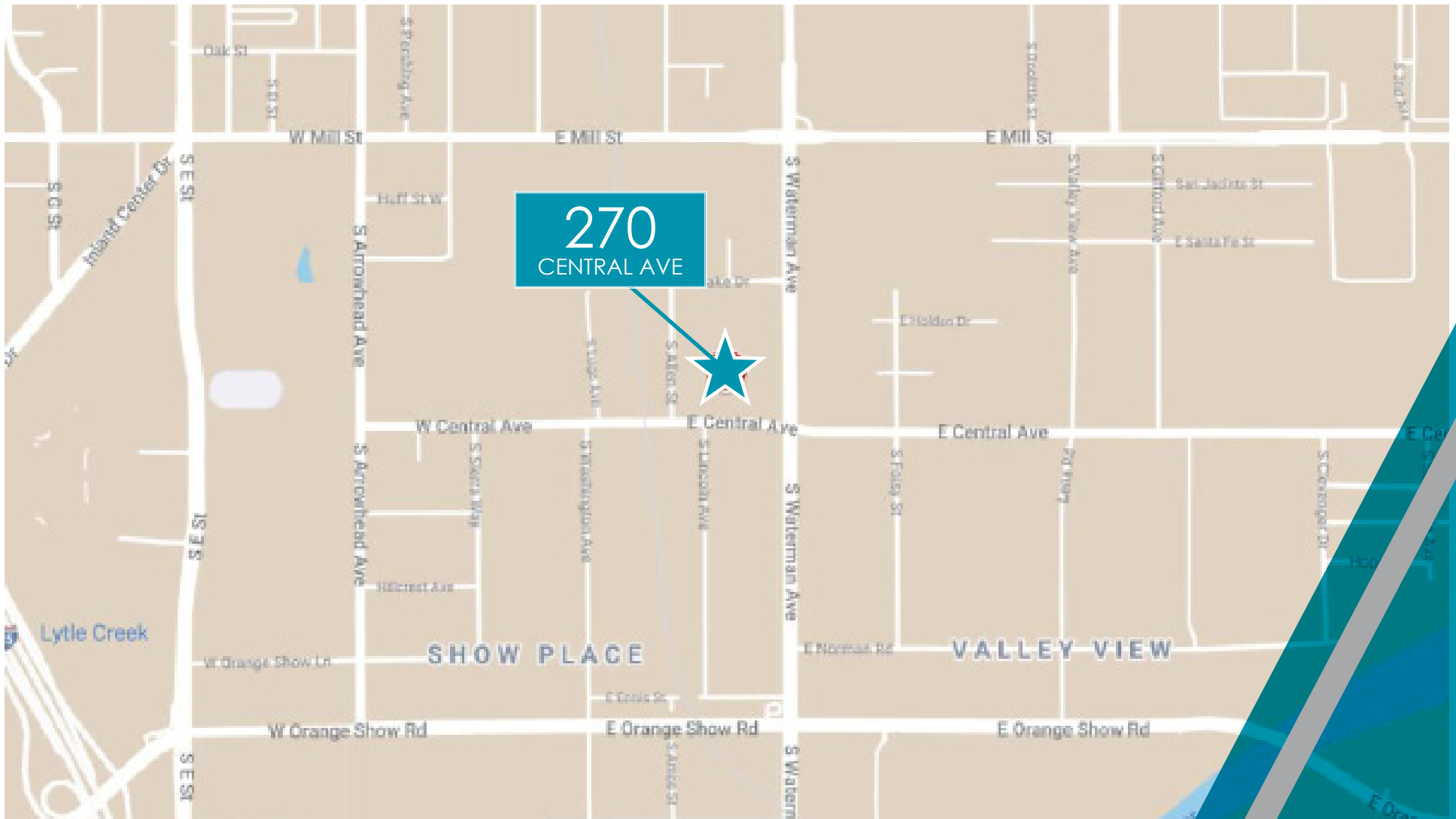
- 117,327 sf located on 5.24 acres
- 2,980/SF of Offices
- 18 DH (9'X10') with 6 mechanical 50,000 lb. dock levelers
- 6 GL (12'X14')
- 60' X 52' Bay Spacing
- 130' Concrete Truck Court
- 32' Clear Height
- 104 auto parking
- ESFR Fire Sprinkler
- LED Warehouse Lighting
- 2.5% skylights
- 1200 Amp Power, 2,000 Amp UGPS
- White Scrim Foil
- Close Proximity to the I-10 & 215 Freeways
- 21 miles to Ontario International Airport & 3 miles to San Bernardino International Airport
- Corporate neighbors: Amazon, Kohler, Burlington Coat Factory, Kohl's, Mattel, Pep Boys, Pepsi and Medline



PROPERTY

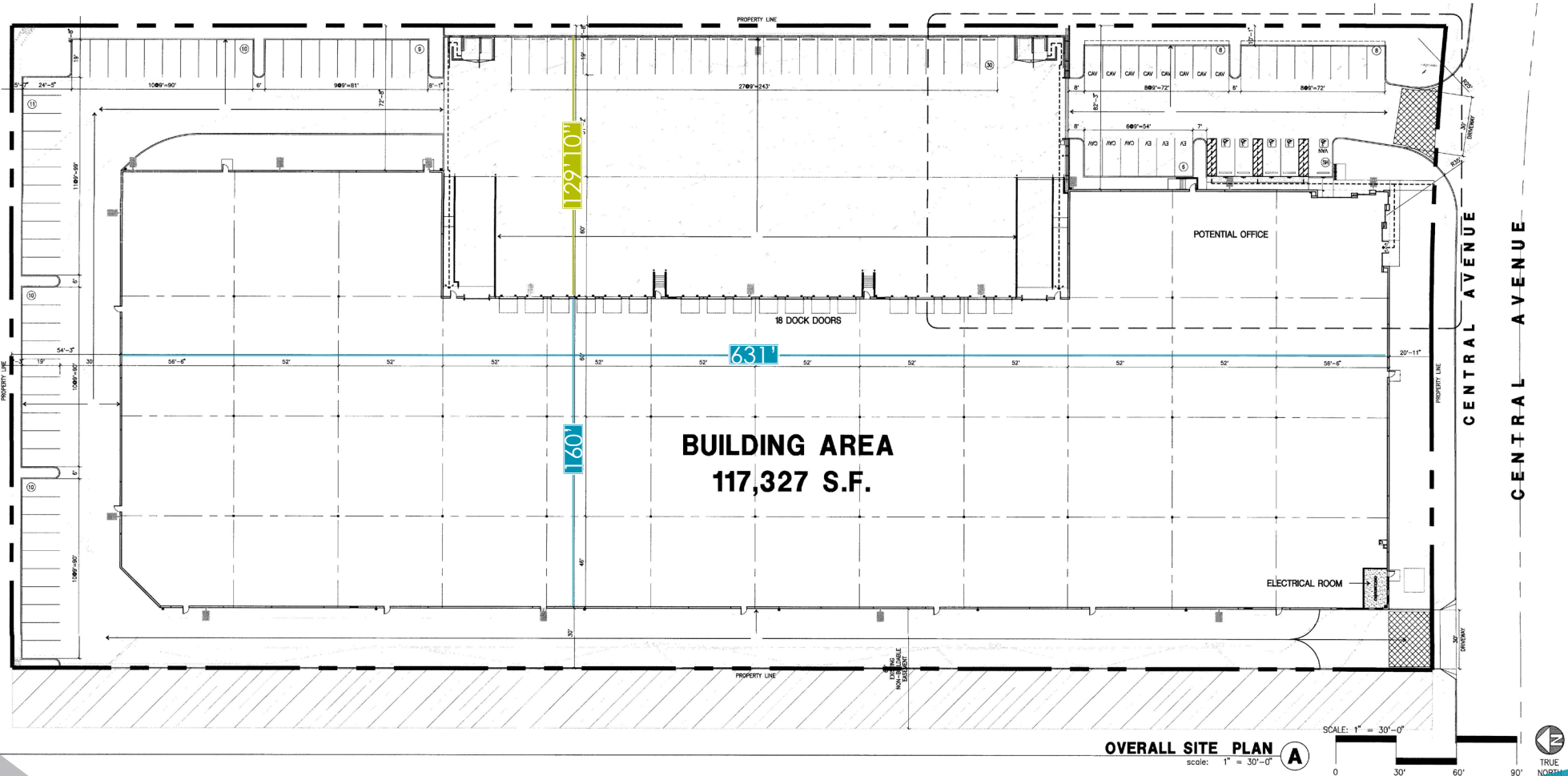


AERIAL MAP



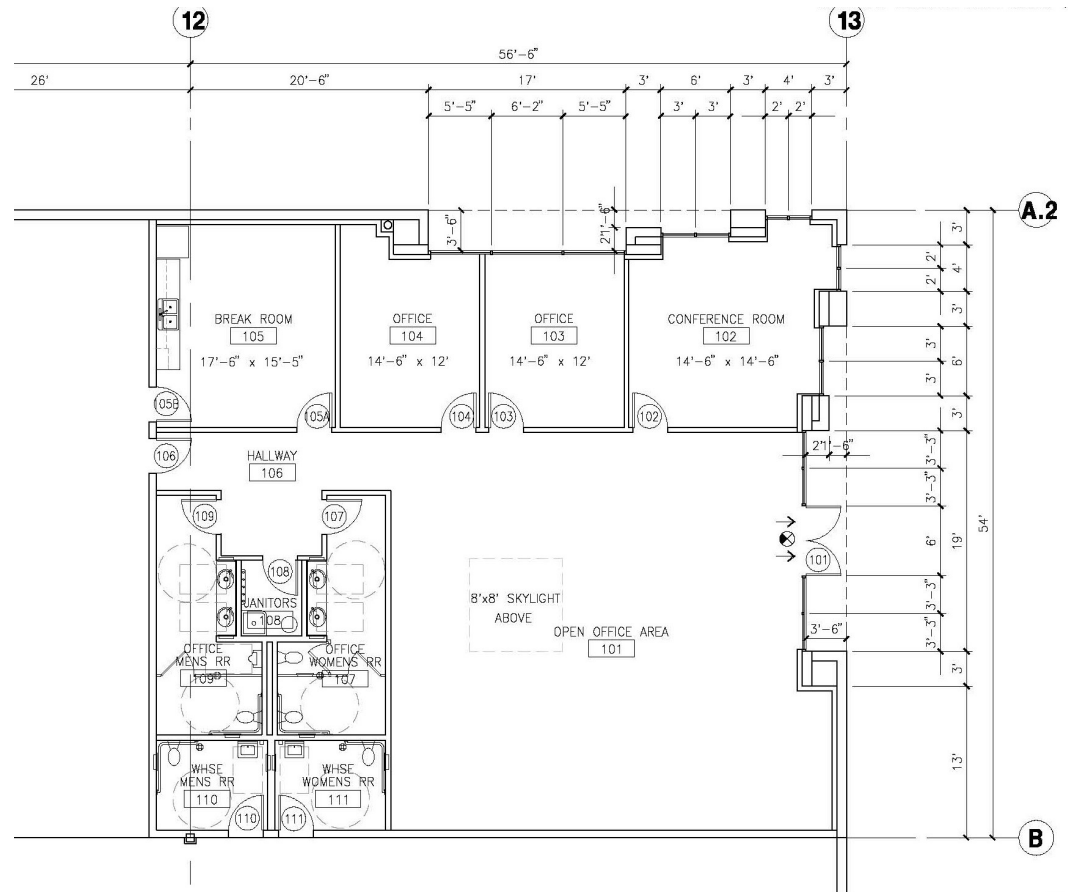
PROPERTY

SITE PLAN



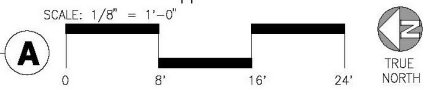
PROPERTY

OFFICE PLAN



ENLARGED OFFICE PLAN @ 1ST FLOOR (2,980 S.F.)

scale: 1/8" = 1'-0"



AERIAL MAP





For more information, please contact:

TAL SIGLAR, SIOR, CCIM
909 942 4680
tal.siglar@cushwake.com
Lic. #01229412

PATRICK CASANI
626 379 7145
patrick.casani@cushwake.com
Lic. #02223488

©2023 Cushman & Wakefield. All rights reserved. The information contained in this communication is strictly confidential. This information has been obtained from sources believed to be reliable but has not been verified. NO WARRANTY OR REPRESENTATION, EXPRESS OR IMPLIED, IS MADE AS TO THE CONDITION OF THE PROPERTY (OR PROPERTIES) REFERENCED HEREIN OR AS TO THE ACCURACY OR COMPLETENESS OF THE INFORMATION CONTAINED HEREIN, AND SAME IS SUBMITTED SUBJECT TO ERRORS, OMISSIONS, CHANGE OF PRICE, RENTAL OR OTHER CONDITIONS, WITHDRAWAL WITHOUT NOTICE, AND TO ANY SPECIAL LISTING CONDITIONS IMPOSED BY THE PROPERTY OWNER(S). ANY PROJECTIONS, OPINIONS OR ESTIMATES ARE SUBJECT TO UNCERTAINTY AND DO NOT SIGNIFY CURRENT OR FUTURE PROPERTY PERFORMANCE.

