

14

VANSO ROAD

ETOBICOKE

SUITE 200



FOR SUBLEASE

**9,018 SF
AVAILABLE**

14 FOR SUBLEASE VANSCO ROAD ETOBICOKE

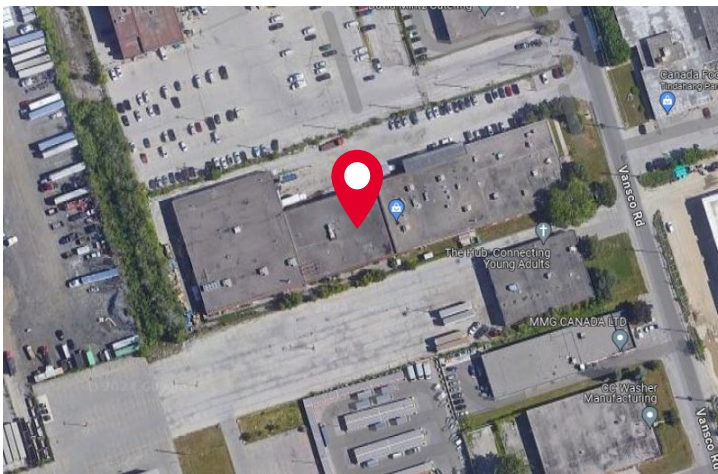
SUITE 200

DETAILS

Space Available:	Suite 200 – 9,018 SF
Net Rent:	\$19.75 PSF
Additional Rent:	\$5.10 PSF
Term:	February 28, 2029

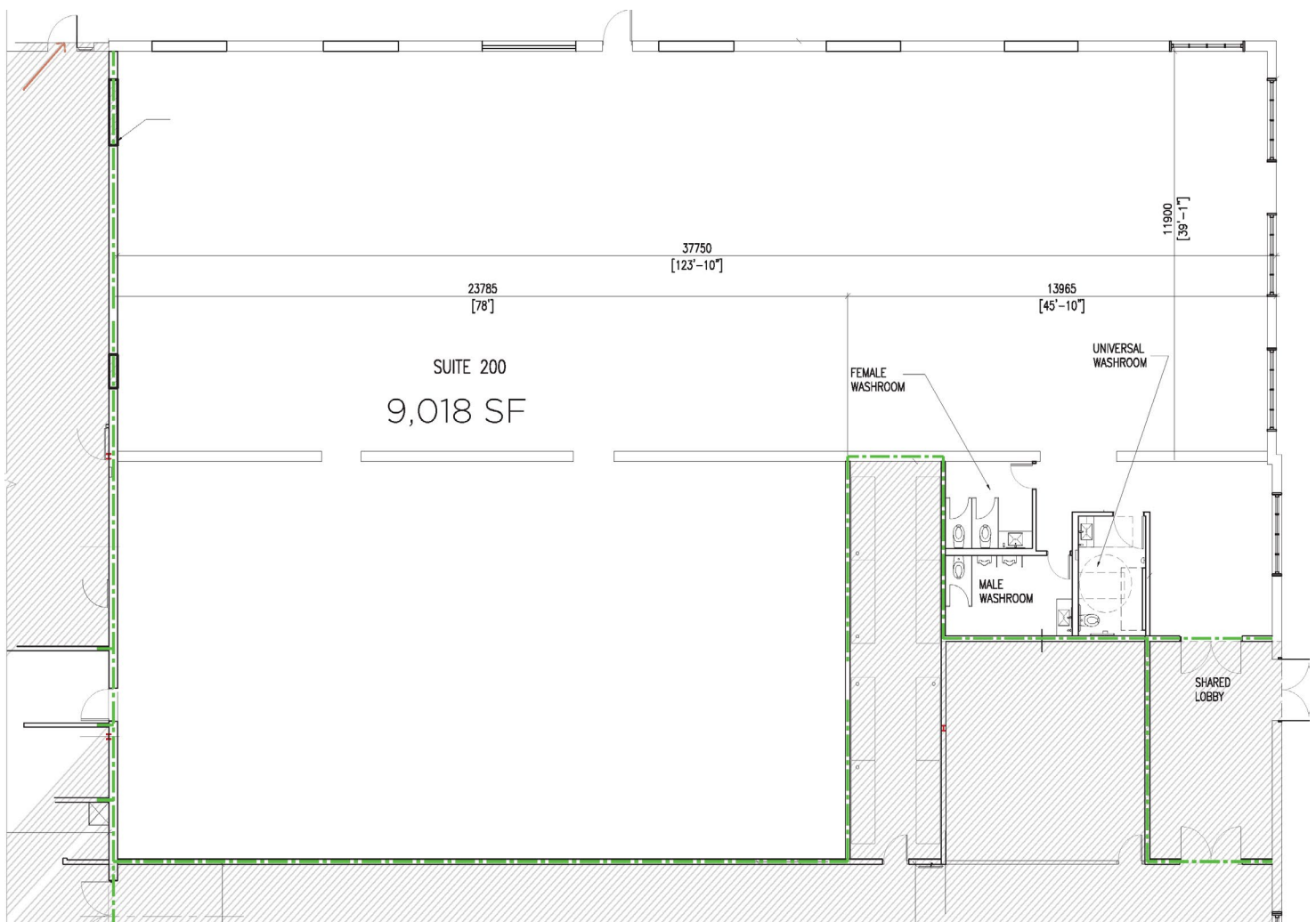
HIGHLIGHTS

- ▶ Loft-inspired with prominent street exposure and parking at door
- ▶ Open concept warehouse/workshop/office space
- ▶ Clean warehouse interior, bright with soaring ceilings and open footprint
- ▶ 12 – 14 feet ceiling heights
- ▶ 200-Amp and 600-Volt power capacity
- ▶ Central location just north of the Gardiner Expressway, with quick access to downtown Toronto and Pearson International Airport
- ▶ Easy access to TTC subway stops at both Kipling and Islington
- ▶ Close to Highway 427 and the QEW

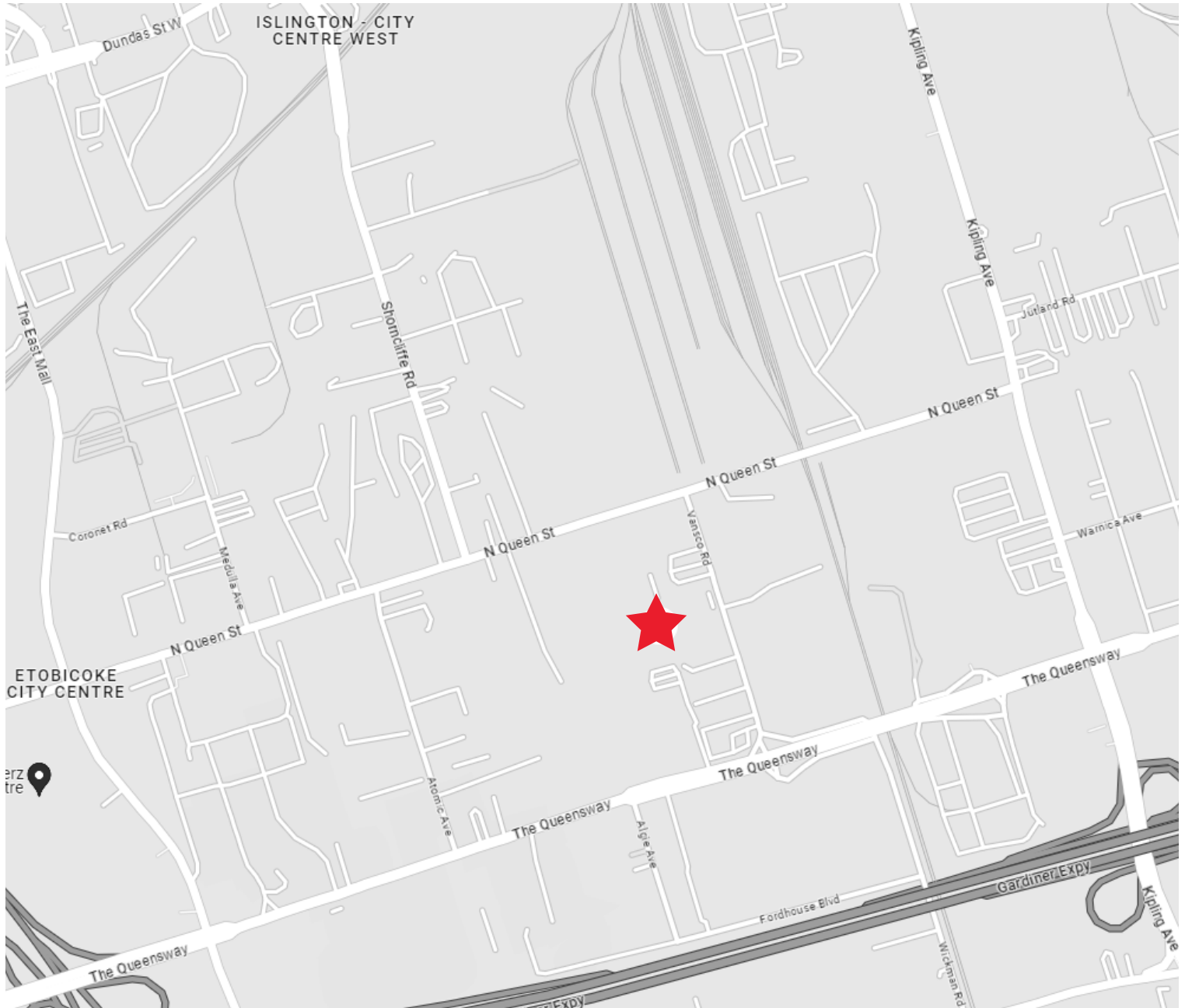


FLOOR PLAN

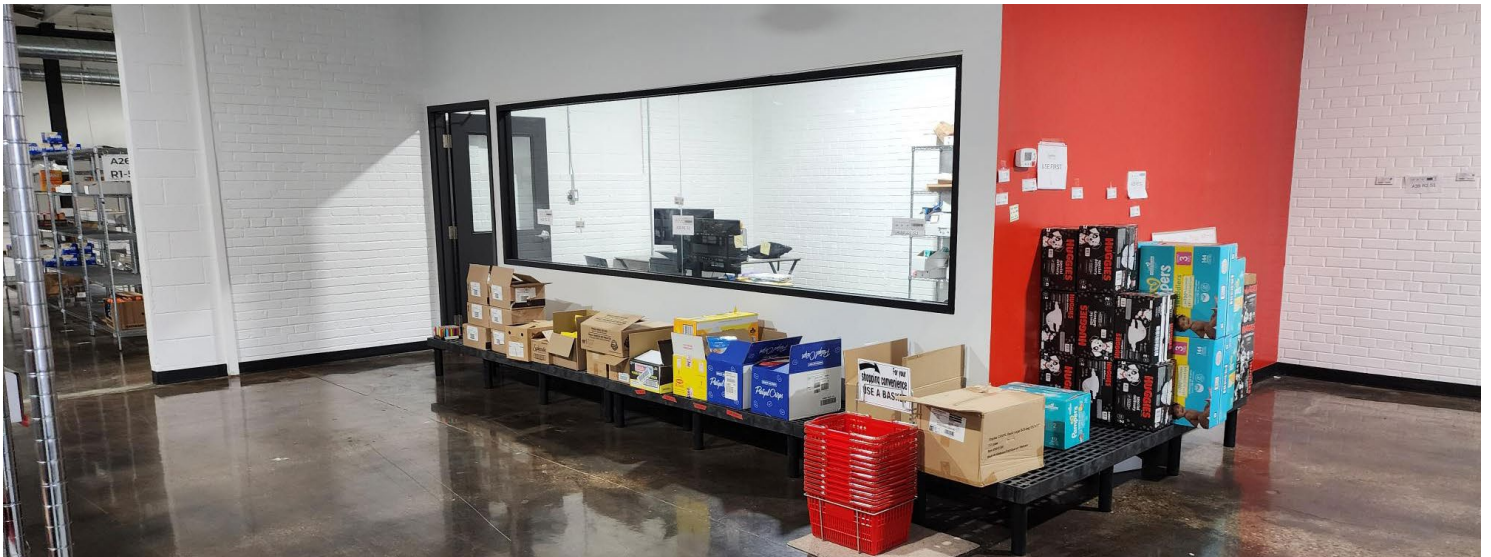
SUITE 200



LOCATION MAP



PROPERTY PHOTOS



14

VANSCO ROAD

ETOBICOKE

SUITE 200



For more information, please contact:

JOHN M. FILICE, PH.D.**

Senior Vice President | Broker | Advisory & Brokerage Services

Industrial Sales & Leasing - Land - Investment

Direct: +1 905 501 6433

Mobile: +1 416 821 3010

Fax: +1 905 568 9444

john.filice@cushwake.com

Cushman & Wakefield ULC, Brokerage

1 Prologis Boulevard, Suite 300

Mississauga, Ontario L5W 0G2

Tel: +1 905 568 9500

cushmanwakefield.com

©2025 Cushman & Wakefield. All rights reserved. The information contained in this communication is strictly confidential. This information has been obtained from sources believed to be reliable but has not been verified. NO WARRANTY OR REPRESENTATION, EXPRESS OR IMPLIED, IS MADE AS TO THE CONDITION OF THE PROPERTY (OR PROPERTIES) REFERENCED HEREIN OR AS TO THE ACCURACY OR COMPLETENESS OF THE INFORMATION CONTAINED HEREIN, AND SAME IS SUBMITTED SUBJECT TO ERRORS, OMISSIONS, CHANGE OF PRICE, RENTAL OR OTHER CONDITIONS, WITHDRAWAL WITHOUT NOTICE, AND TO ANY SPECIAL LISTING CONDITIONS IMPOSED BY THE PROPERTY OWNER(S). ANY PROJECTIONS, OPINIONS OR ESTIMATES ARE SUBJECT TO UNCERTAINTY AND DO NOT SIGNIFY CURRENT OR FUTURE PROPERTY PERFORMANCE. *SALES REPRESENTATIVE **BROKER