



ARES  
INDUSTRIAL  
MANAGEMENT

# MONUMENT BUSINESS PARK | BUILDING A

645 INDEPENDENCE PARKWAY, DEER PARK, TX 77571

FOR LEASE | 194,610 SQ FT | CLASS A DISTRIBUTION BUILDING



## DAVID MUNSON

Executive Managing Director  
Direct: 713 913 5473  
Mobile: 832 545 8204  
[david.munson@cushwake.com](mailto:david.munson@cushwake.com)

## GARRETT THOMAS

Director  
Direct: 713 260 0244  
Mobile: 318 581 7695  
[garrett.thomas@cushwake.com](mailto:garrett.thomas@cushwake.com)

## DEVELOPED BY

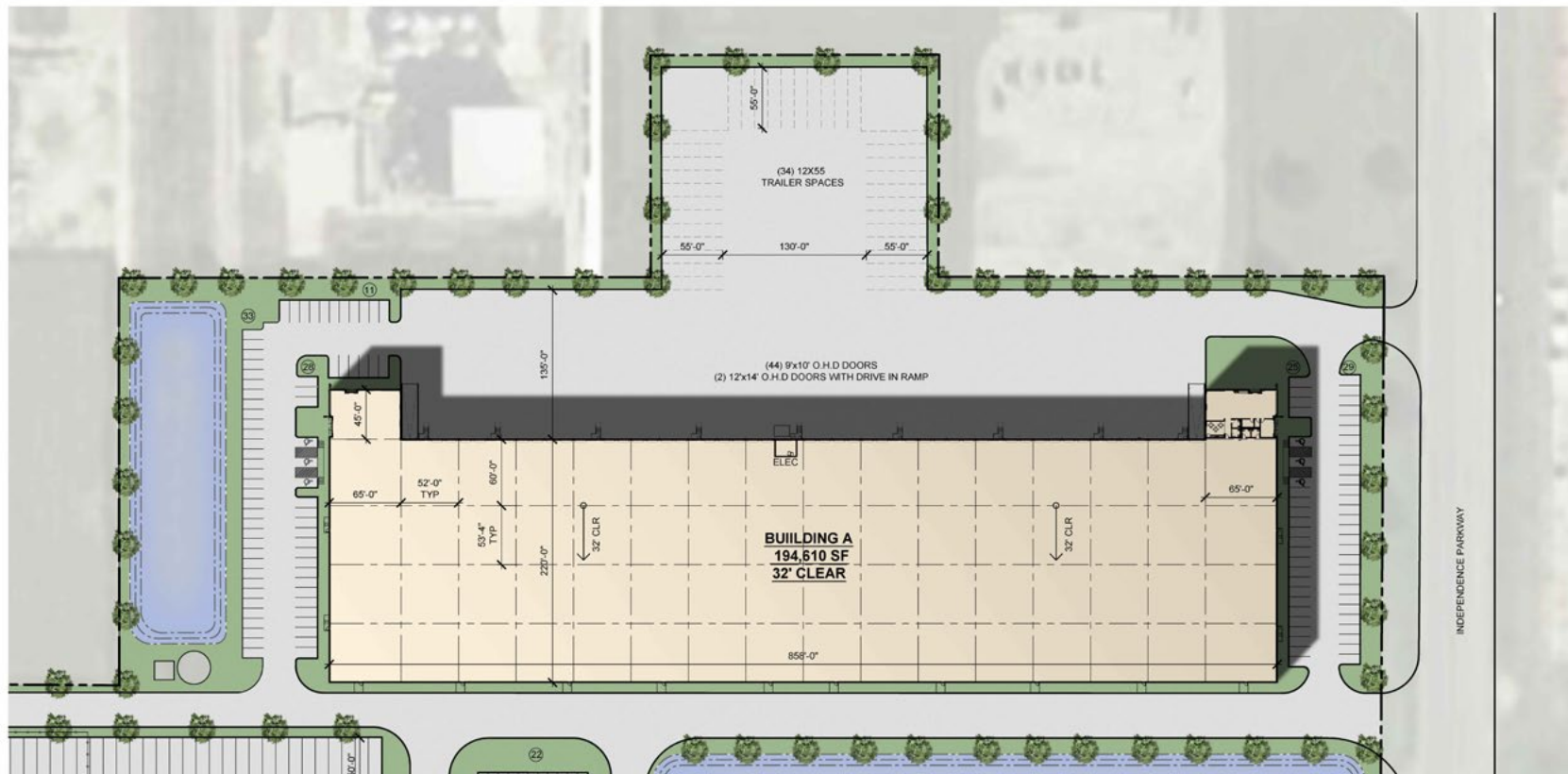


ARES  
INDUSTRIAL  
MANAGEMENT

# Property FEATURES

- 194,610 sf (divisible to 60,000 sf)
- 2,764 SF of Spec Office
- 32' Clear Height
- 135' Truck Court
- 34 Trailer Parking Spaces

- 126 Car parks
- ESFR Sprinkler System
- Frontage on Independence Parkway
- Fenced and Secured Truck Court
- 44 Dock High Doors & 2 Ramps

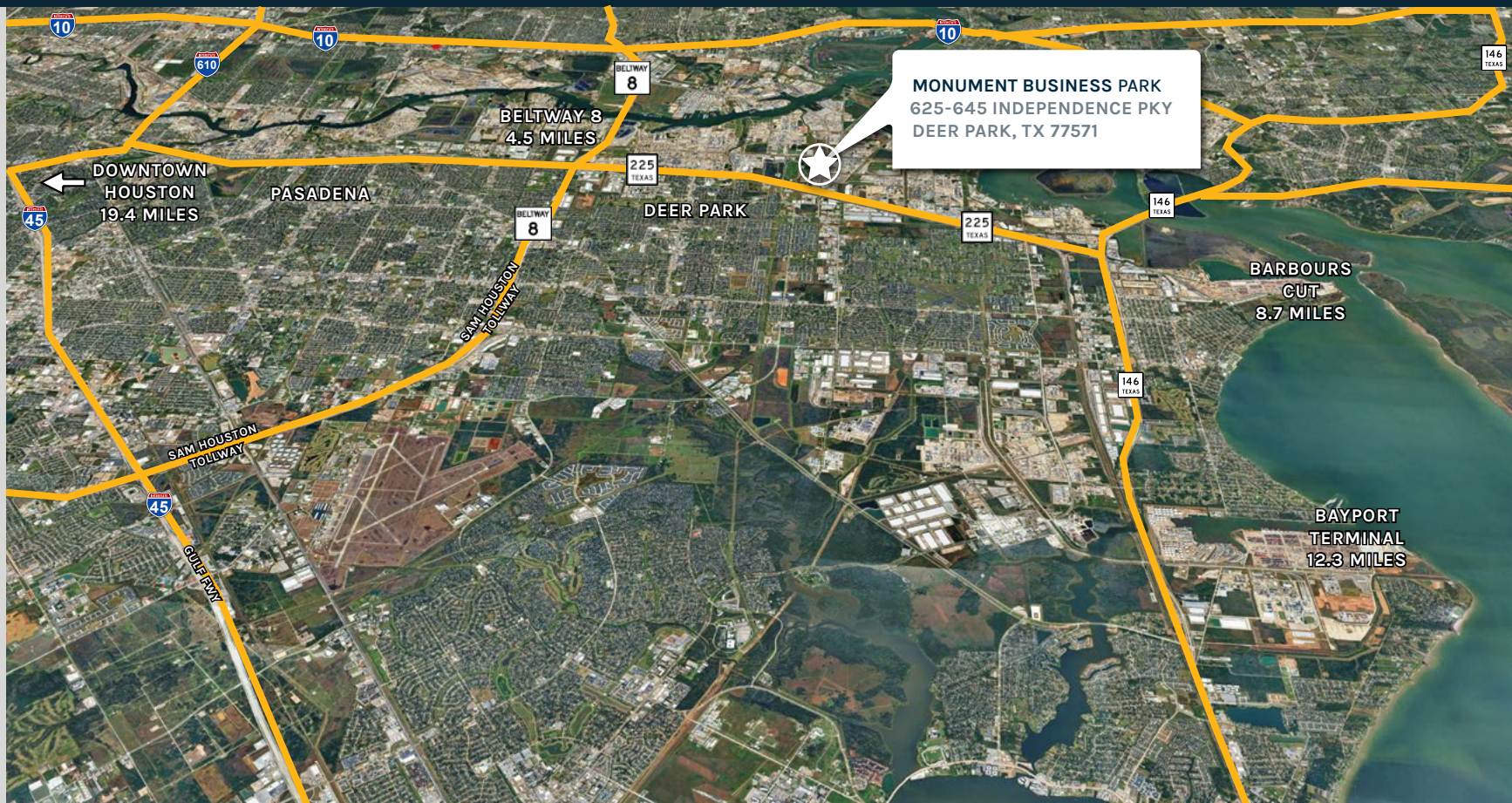


ARES  
INDUSTRIAL  
MANAGEMENT



# Location HIGHLIGHTS

- Frontage on Independence Parkway
- Approximately 1/2 mile north of full interchange at SH-225
- Easy access to Beltway 8 & TX-146
- Close to Barbours Cut and Bayport Terminal



ARES  
INDUSTRIAL  
MANAGEMENT



## ABOUT ARES MANAGEMENT CORPORATION

Ares Management Corporation (NYSE: ARES) is a leading global alternative investment manager offering clients complementary primary and secondary investment solutions across the credit, private equity, real estate and infrastructure asset classes. We seek to provide flexible capital to support businesses and create value for our stakeholders and within our communities. By collaborating across our investment groups, we aim to generate consistent and attractive investment returns throughout market cycles. For more information, please visit [www.aresmgmt.com](http://www.aresmgmt.com).



### DAVID MUNSON

Executive Managing Director  
Direct: 713 913 5473  
Mobile: 832 545 8204  
[david.munson@cushwake.com](mailto:david.munson@cushwake.com)

### GARRETT THOMAS

Director  
Direct: 713 260 0244  
Mobile: 318 581 7695  
[garrett.thomas@cushwake.com](mailto:garrett.thomas@cushwake.com)



ARES  
INDUSTRIAL  
MANAGEMENT