

3250 OLCOTT

SANTA CLARA, CA

3250 OLCOTT
SANTA CLARA, CA

HIGHLIGHTS

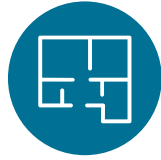
- ±45,896 SF
- Sublease Expiration: 3/30/2025
- Asking Price: Please Inquire
- Available within 60 days
- Plug & Play
- Monument and building signage
- 8 Charging Stations
- Class A building with high-end tech interiors
- Walking distance to Santa Clara Square



BUILDING FEATURES



ADDITIONAL KITCHENS/
BREAK ROOMS



251 CUBES



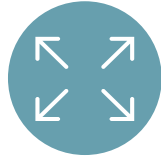
LARGE BREAK/
ALL-HANDS ROOM



MULTIPLE BREAKOUT
AREAS THROUGHOUT
THE BUILDING



HIGH IMAGE LOBBY



LARGE BALCONY



30 CONFERENCE ROOMS



8 PRIVATE OFFICES



FLOOR PLAN 1

3250 **OLCOTT**
SANTA CLARA, CA

FURNITURE PLAN

- 56 Cubes
- 11 Conference Rooms
- Large break/all-hands room
- Kitchen



FLOOR PLAN 2

3250 OLCOTT
SANTA CLARA, CA

FURNITURE PLAN

- 101 Cubes
- 2 Private Offices
- 11 Conference Rooms
- Break Room

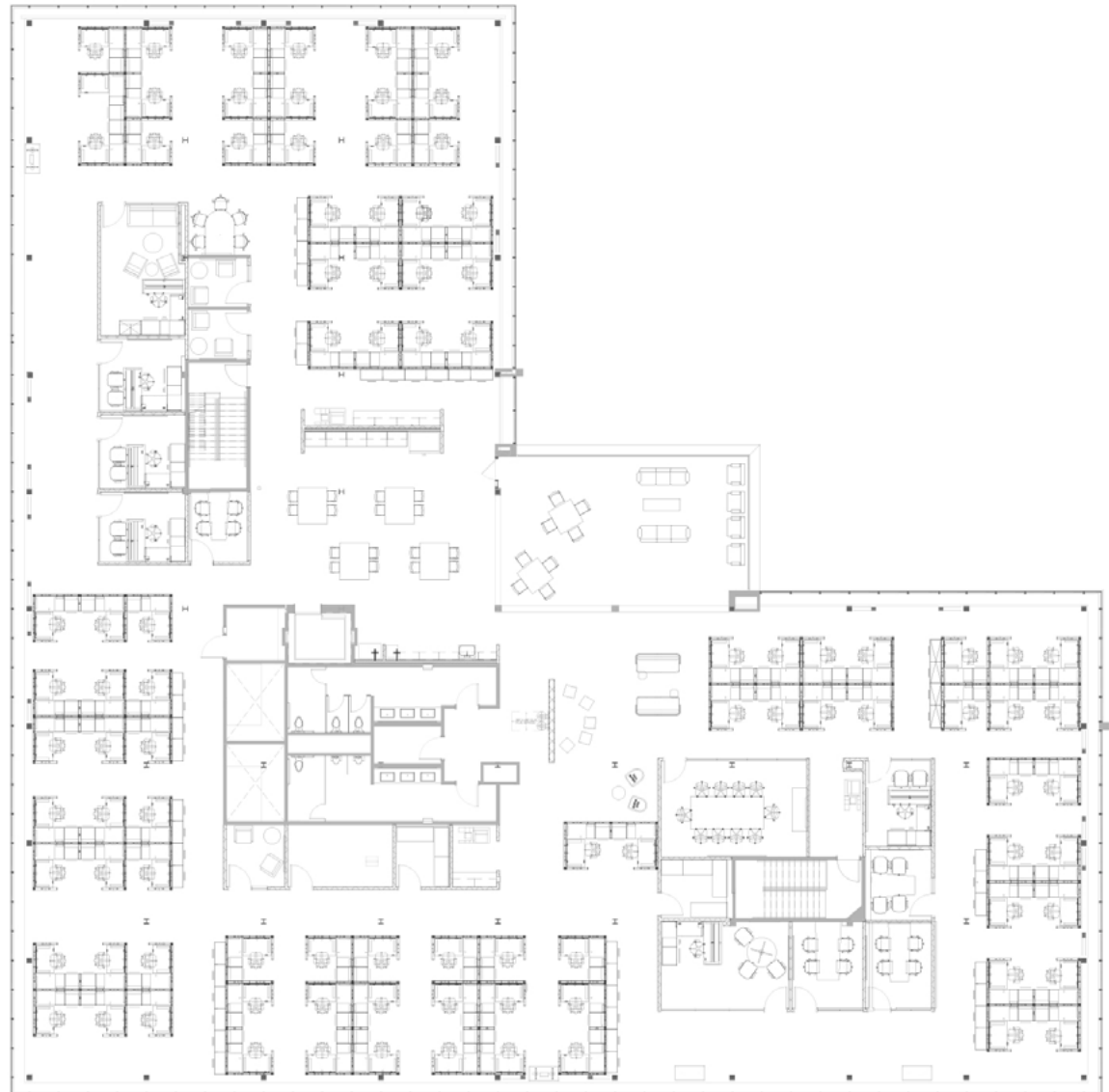


FLOOR PLAN 3

3250 **OLCOTT**
SANTA CLARA, CA

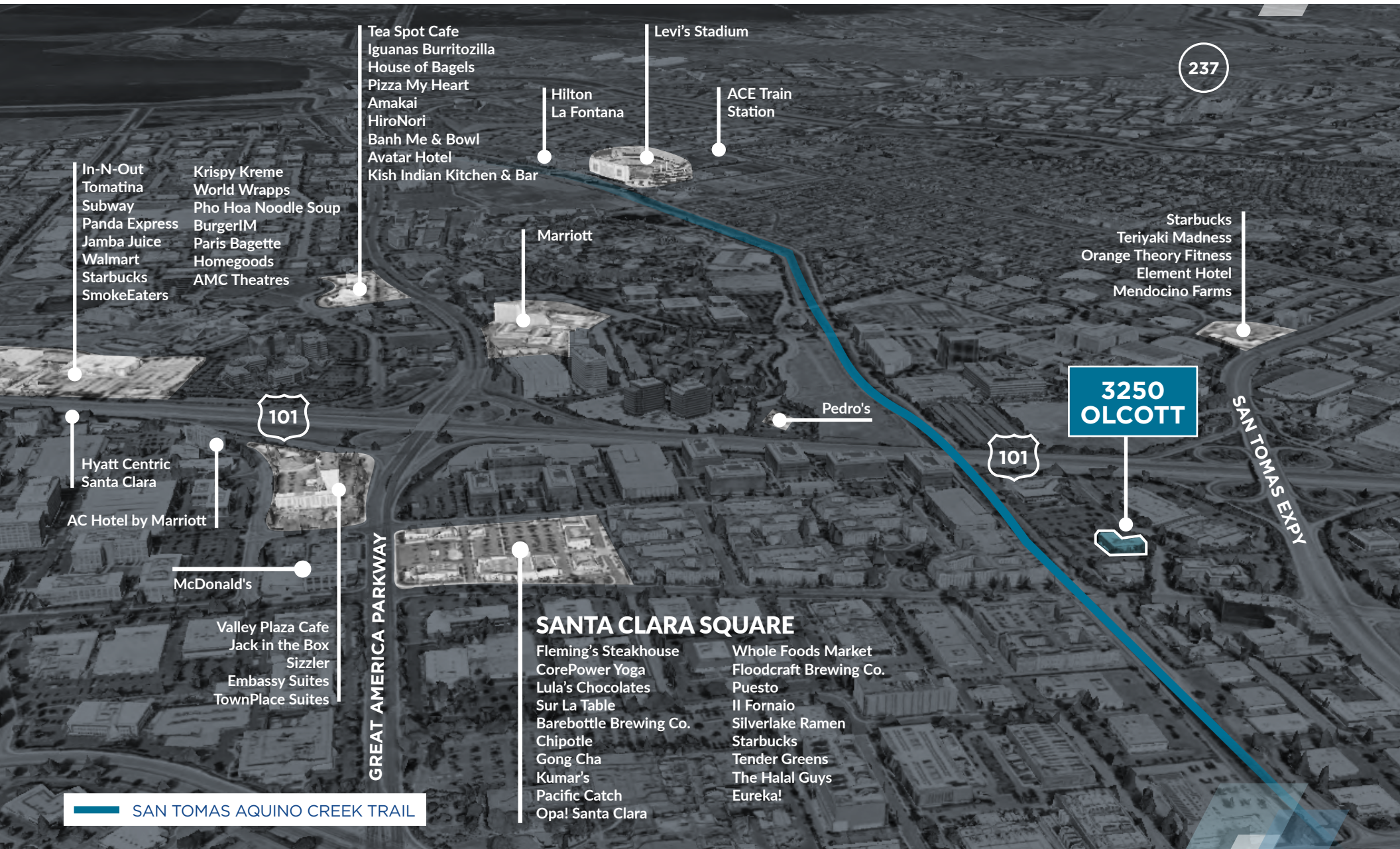
FURNITURE PLAN

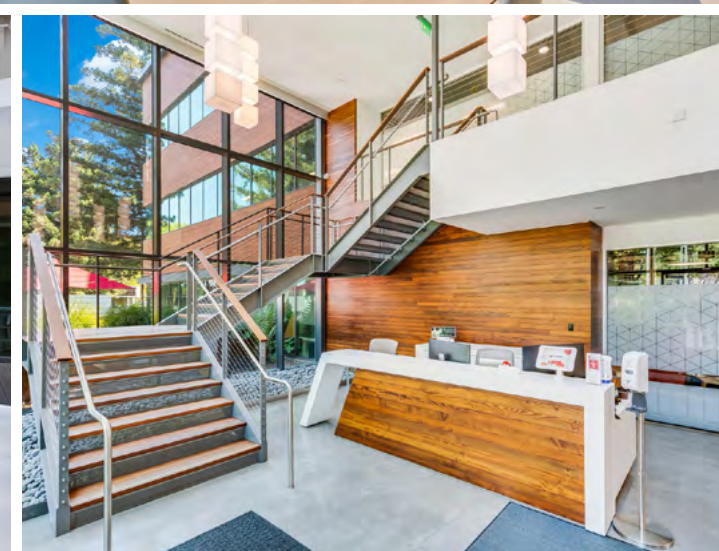
- 94 Cubes
- 6 Private Offices
- 8 Conference Rooms
- Break Room



AMENITIES MAP

3250 OLCOTT
SANTA CLARA, CA







3250 OLCOTT

SANTA CLARA, CA

For More Information, Please Contact:

Chris Errecart

209 483 3450
chris.errecart@cushwake.com
LIC# 01924228

Mike Mordaunt

415 992 1095
mike.mordaunt@cushwake.com
LIC# 01778048

Nate Currie

650 804 9103
nate.currie@cushwake.com
LIC# 01418567



©2022 Cushman & Wakefield. All rights reserved. The information contained in this communication is strictly confidential. This information has been obtained from sources believed to be reliable but has not been verified. NO WARRANTY OR REPRESENTATION, EXPRESS OR IMPLIED, IS MADE AS TO THE CONDITION OF THE PROPERTY (OR PROPERTIES) REFERENCED HEREIN OR AS TO THE ACCURACY OR COMPLETENESS OF THE INFORMATION CONTAINED HEREIN, AND SAME IS SUBMITTED SUBJECT TO ERRORS, OMISSIONS, CHANGE OF PRICE, RENTAL OR OTHER CONDITIONS, WITHDRAWAL WITHOUT NOTICE, AND TO ANY SPECIAL LISTING CONDITIONS IMPOSED BY THE PROPERTY OWNER(S). ANY PROJECTIONS, OPINIONS OR ESTIMATES ARE SUBJECT TO UNCERTAINTY AND DO NOT SIGNIFY CURRENT OR FUTURE PROPERTY PERFORMANCE.