

FOR LEASE

# CHESTERFIELD GROVE V

17050 BAXTER ROAD, CHESTERFIELD, MO 63005



## PROPERTY HIGHLIGHTS

- Suite 125 - 2,559 SF
- Conference room
- 6 offices
- Shared kitchen
- Free surface parking
- Excellent accessibility on and off I-64/US-40 and Baxter Road
- 24-hour access
- Banking on site
- Lease Rate: \$27.00/SF; Full Service



For more information, please contact:

**Matt Wright**  
Director  
+1 314 274 3401  
matt.wright1@cushwake.com

7700 Forsyth Blvd., Suite 1210  
St. Louis, MO 63105  
+1 314 862 7100  
[cushmanwakefield.com](http://cushmanwakefield.com)



# CHESTERFIELD GROVE V

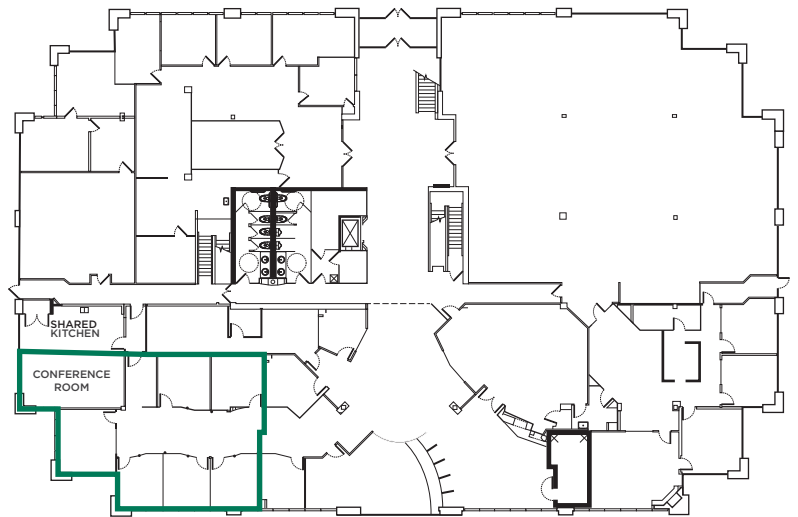
17050 BAXTER ROAD, CHESTERFIELD, MO 63005

## PHOTOS



## FLOOR PLAN

SUITE 125 | 2,559 SF



For more information, please contact:

**Matt Wright**

Director

+1 314 274 3401

[matt.wright1@cushwake.com](mailto:matt.wright1@cushwake.com)

7700 Forsyth Blvd., Suite 1210

St. Louis, MO 63105

+1 314 862 7100

[cushmanwakefield.com](http://cushmanwakefield.com)



©2026 Cushman & Wakefield. All rights reserved. The information contained in this communication is strictly confidential. This information has been obtained from sources believed to be reliable but has not been verified. NO WARRANTY OR REPRESENTATION, EXPRESS OR IMPLIED, IS MADE AS TO THE CONDITION OF THE PROPERTY (OR PROPERTIES) REFERENCED HEREIN OR AS TO THE ACCURACY OR COMPLETENESS OF THE INFORMATION CONTAINED HEREIN, AND SAME IS SUBMITTED SUBJECT TO ERRORS, OMISSIONS, CHANGE OF PRICE, RENTAL OR OTHER CONDITIONS, WITHDRAWAL WITHOUT NOTICE, AND TO ANY SPECIAL LISTING CONDITIONS IMPOSED BY THE PROPERTY OWNER(S). ANY PROJECTIONS, OPINIONS OR ESTIMATES ARE SUBJECT TO UNCERTAINTY AND DO NOT SIGNIFY CURRENT OR FUTURE PROPERTY PERFORMANCE.