

DEPOT PARK BUILDING 3

SACRAMENTO MARKET
POWER INN SUBMARKET

Valdez Ave / Luzon Ave
Sacramento, CA 95828



FOR LEASE

BAYS 1, 3 & 4

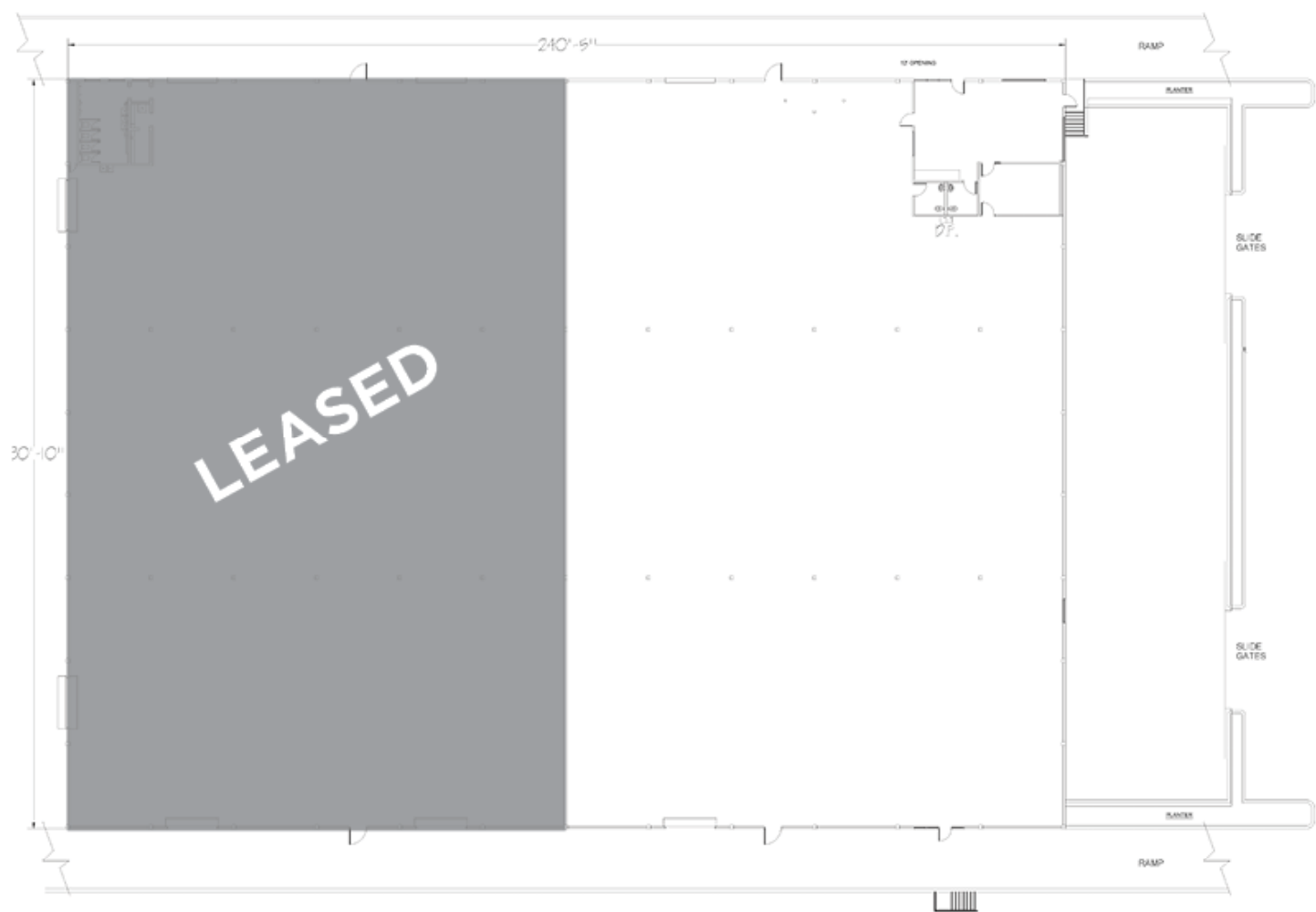
±76,230 SF Available



LEASED BY



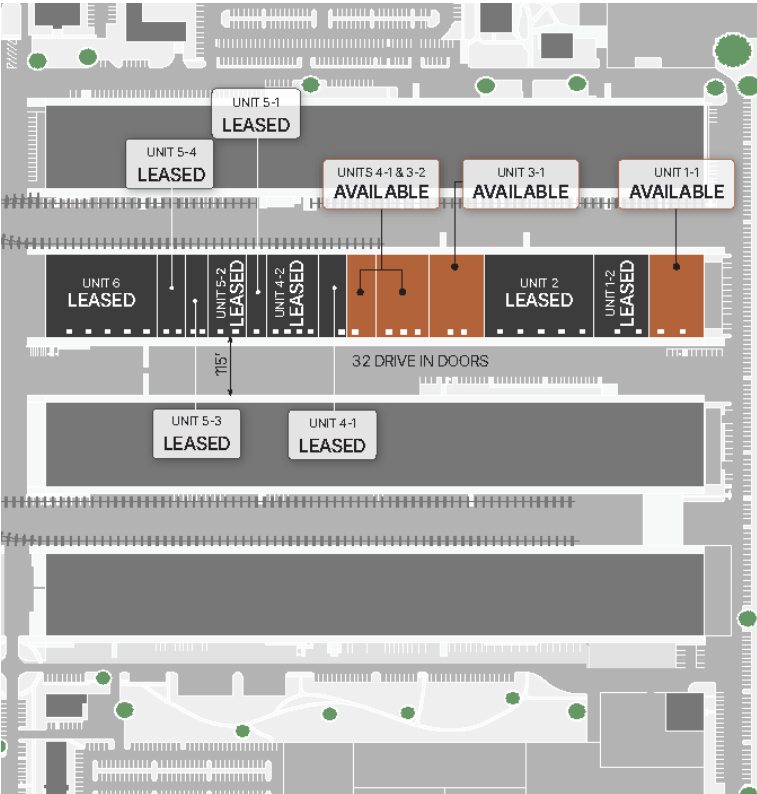
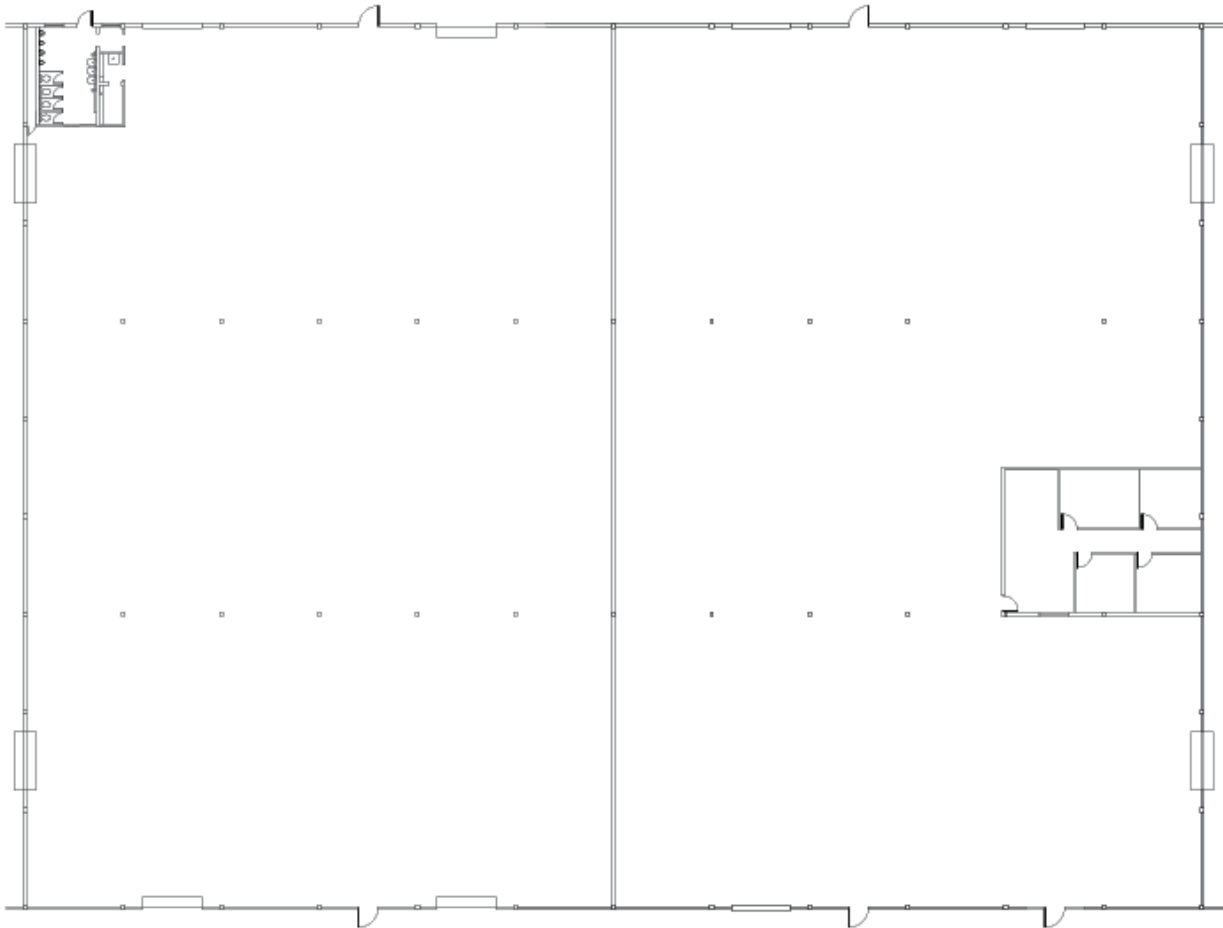
BAY 1



BLDG 3 | BAY 1

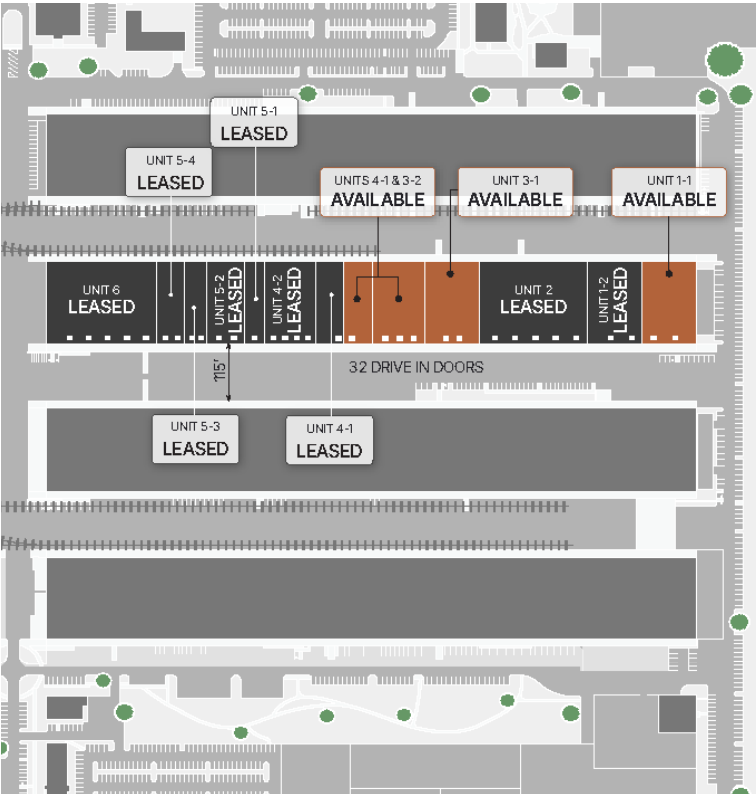
Available SF:	21,780 SF
Office SF:	1,200 SF
Warehouse SF:	20,580 SF
Loading Doors:	Two (2)
Dock Positions:	Multiple
Fully Secured Business Park	Sprinklered
Gated Entry	Ample Parking
Around-the-Clock Security	

BAY 3



BLDG 3 BAY 3	
Available SF:	43,560 SF
Divisible to:	21,780 SF
Office SF:	875 SF
Warehouse SF:	42,685 SF
Loading Doors:	Seven (7)
Dock Positions:	Multiple
Fully Secured Business Park	Sprinklered
Gated Entry & Around-the-Clock Security	Ample Parking

BAY 4



BLDG 3 | BAY 4-1

Available SF:	10,890 SF
Office SF:	900 SF
Warehouse SF:	9,075 SF
Loading Doors:	One (1)
Dock Positions:	Multiple
Fully Secured Business Park	Sprinklered
Gated Entry	Ample Parking
Around-the-Clock Security	

CONTACT INFORMATION

Depot Park
Sacramento, CA 95828

DAVID NICHOLSON

david.nicholson@cushwake.com
(916) 425-8355

CA Lic. 01845338

BRYCE MACDONALD

bryce.macdonald@cushwake.com
(916) 288-4806

CA Lic. 01422174

MATT COLOGNA

matt.cologna@cushwake.com
(916) 288-4805

CA Lic. 01210309



LEASED BY

