

11435 GRANITE STREET

CHARLOTTE

11435 GRANITE STREET
Charlotte, NC 28273



FOR LEASE

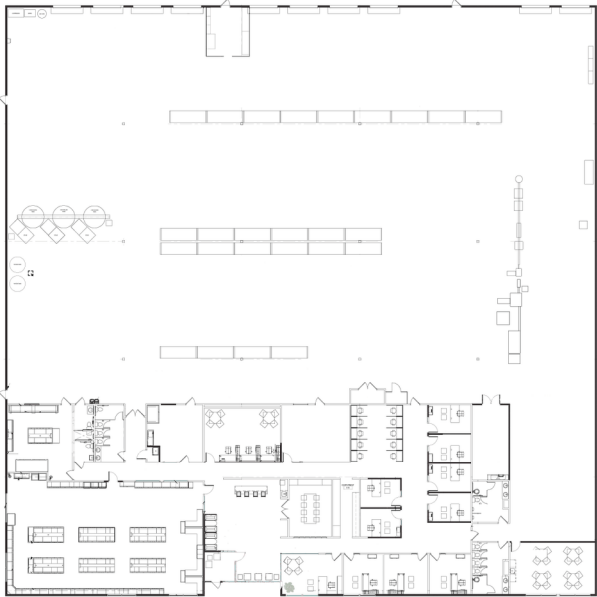
SUITE M

±39,993 SF



LEASED BY





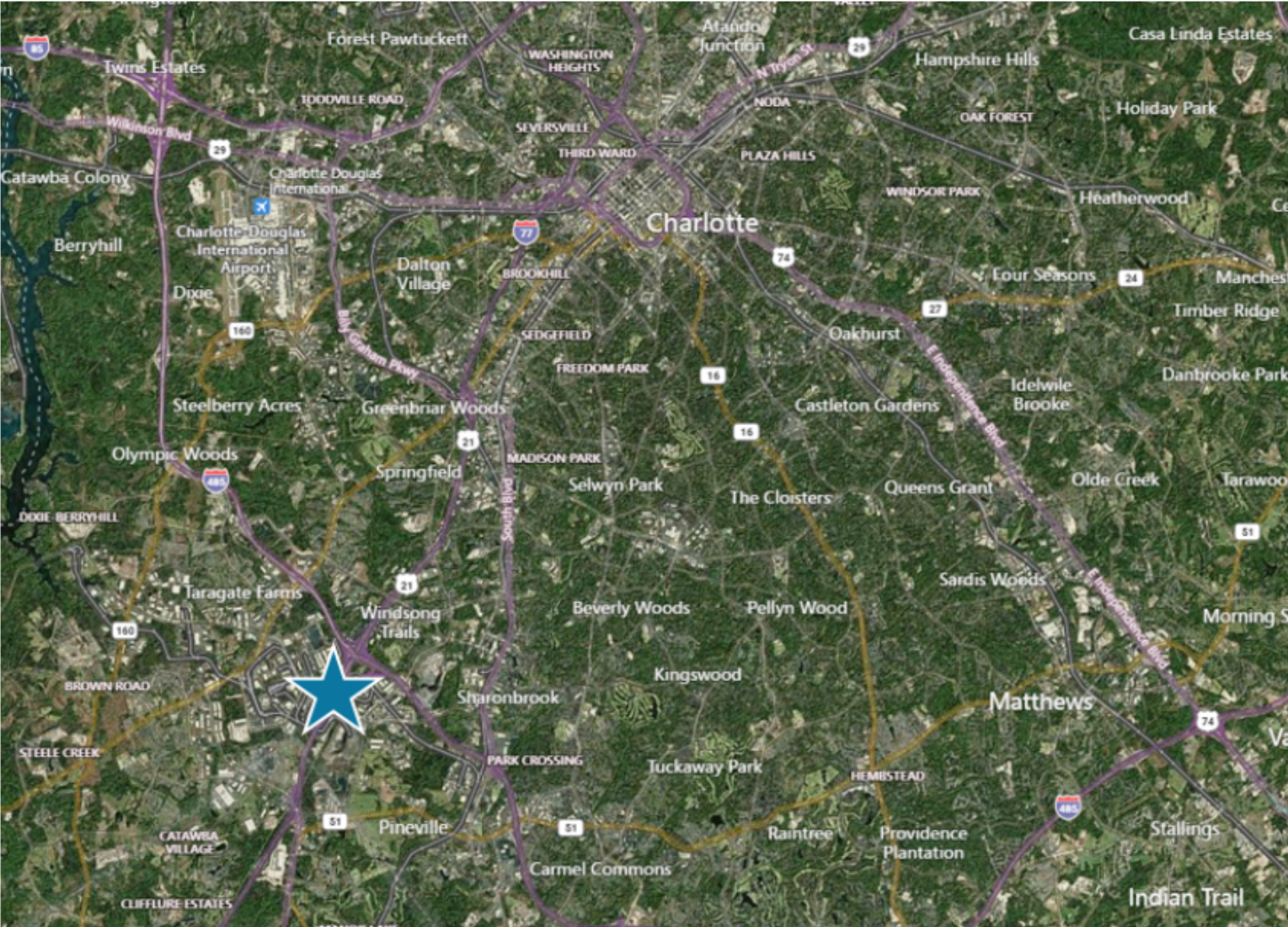
AVAILABLE JANUARY 1, 2026

Total Available	39,993 SF
Office Area	±11,224 SF
Clear Height	24'
Dock Doors	10 Dock High (9'x10')
Drive Ins	1 Drive In (20'x14')
Column Spacing	40' x 40'
Fire Protection	ESFR
Power	1,600 Amps 480/277 V

FOR LEASE

±39,993 SF

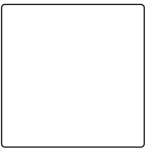
- Excellent Highway Visibility | I-77
- Heavy Auto Parking
- Close Proximity to CLT-Douglas International Airport



DRIVE TIMES

I-77	.3 miles 3 minutes
I-485	2.8 miles 6 minutes
I-85	4.6 miles 11 minutes
Uptown Charlotte	11 miles 18 minutes
Raleigh, NC	175 miles 2.5 hours
Atlanta, GA	244 miles 3.75 hours

CONTACT INFORMATION



11435 Granite Street
Charlotte, NC, 28273

Matt Treble

matt.treble@cushwake.com
(704) 335 4430

Frances Crisler

frances.crisler@cushwake.com
(704) 620 6014

Fermin Deoca

fermin.deoca@cushwake.com
(704) 335 4436

This document is for informational purposes only and does not constitute an offer or acceptance of a lease. Any lease agreement must be in writing and signed by the landlord. No representations or warranties are made except as expressly stated in a signed lease. Information is provided "as is" and may be subject to errors or change without notice.



LEASED BY

