

11435 GRANITE STREET

CHARLOTTE

11435 GRANITE STREET
Charlotte, NC 28273



FOR LEASE

SUITE D

±11,852 SF



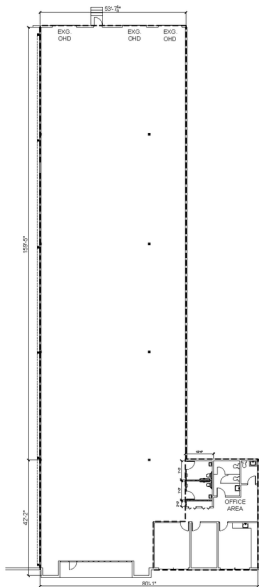
LEASED BY





AVAILABLE OCTOBER 1, 2026

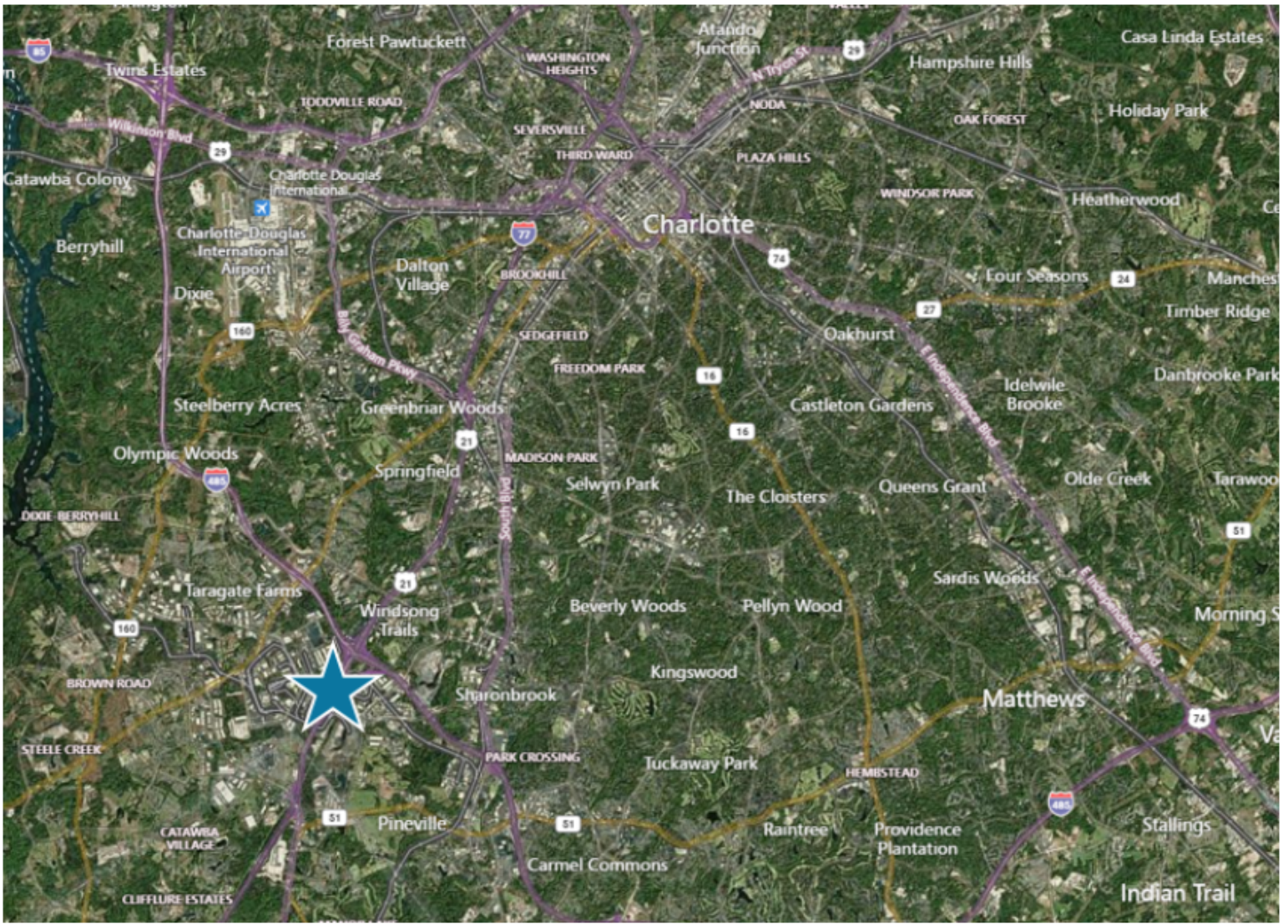
Total Available	11,852 SF
Office Area	±1,302 SF
Clear Height	24'
Dock Doors	3 Dock High (9'x10')
Column Spacing	40' x 40'
Fire Protection	ESFR



FOR LEASE

±11,852 SF

- I-77 Frontage
- Excellent Access to I-77 & I-485
- Close Proximity to CLT-Douglas International Airport



DRIVE TIMES

I-77	.3 miles 3 minutes
I-485	2.8 miles 6 minutes
I-85	4.6 miles 11 minutes
Uptown Charlotte	11 miles 18 minutes
Raleigh, NC	175 miles 2.5 hours
Atlanta, GA	244 miles 3.75 hours

CONTACT INFORMATION

11435 Granite Street
Charlotte, NC, 28273

Matt Treble

matt.treble@cushwake.com
(704) 335 4430

Frances Crisler

frances.crisler@cushwake.com
(704) 620 6014

Fermin Deoca

fermin.deoca@cushwake.com
(704) 335 4436

This document is for informational purposes only and does not constitute an offer or acceptance of a lease. Any lease agreement must be in writing and signed by the landlord. No representations or warranties are made except as expressly stated in a signed lease. Information is provided "as is" and may be subject to errors or change without notice.



LEASED BY

