



I-69 & EXIT 134

Martinsville, IN 46151

±45.25 ACRES

PROPERTY HIGHLIGHTS

±45.25 acres

Zoned Agriculture

Located at new full I-69 interchange

Sewer connection on the east side of I-69

\$50,000/Acre



BO LEFFEL

Vice Chair

+1 317 639 0441

bo.leffel@cushwake.com

MATT KITE, J.D.

Director

+1 317 616 3981

matt.kite@cushwake.com

One American Square, Suite 1800 | Indianapolis, IN 46282

Main +1 317 639 0515 | Fax +1 317 639 0504

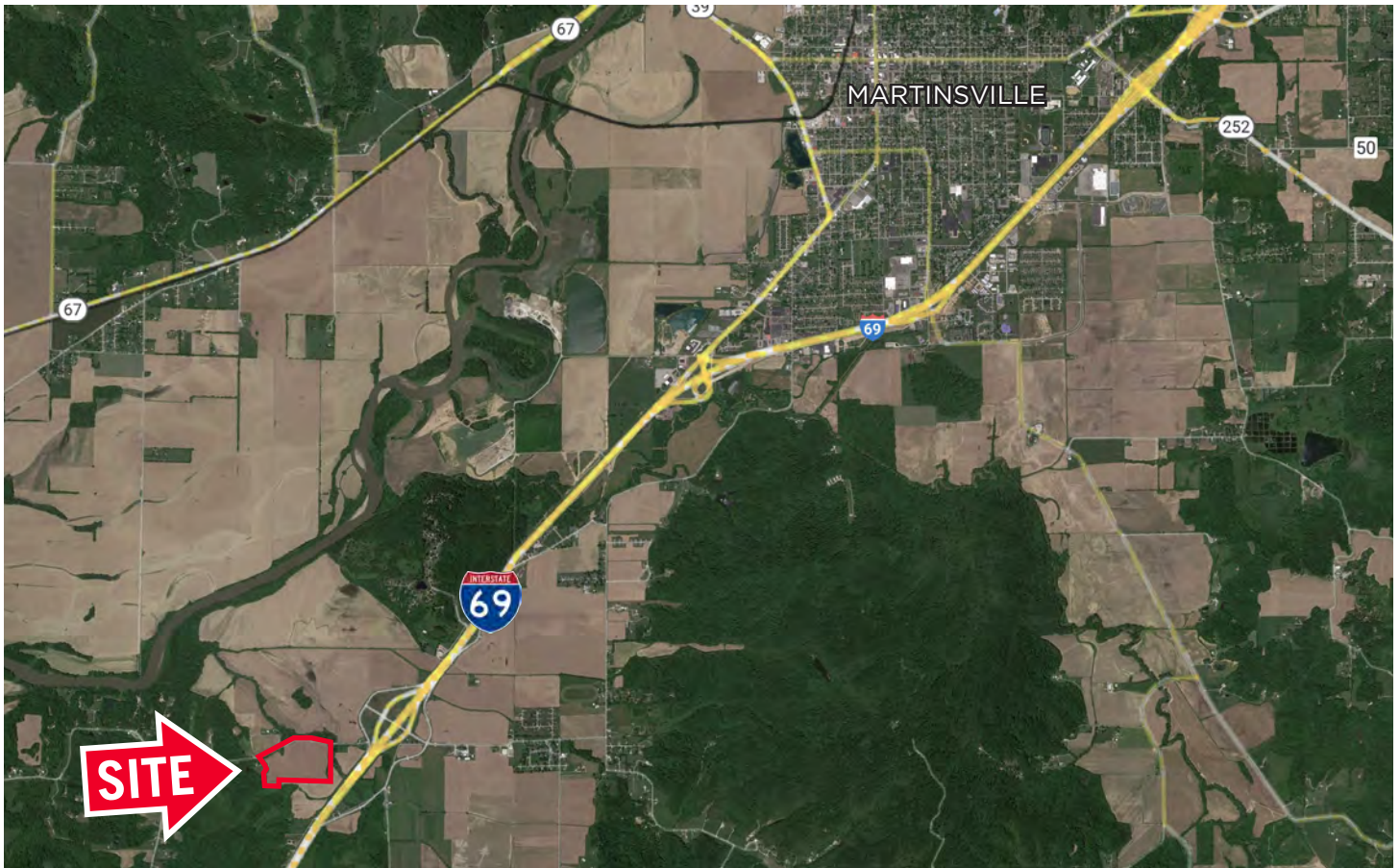
cushmanwakefield.com

©2022 Cushman & Wakefield. All rights reserved. The information contained in this communication is strictly confidential. This information has been obtained from sources believed to be reliable but has not been verified. No warranty or representation, express or implied, is made as to the condition of the property (or properties) referenced herein or as to the accuracy or completeness of the information contained herein, and same is submitted subject to errors, omissions, change of price, rental or other conditions, withdrawal without notice, and to any special listing conditions imposed by the property owner(s). Any projections, opinions or estimates are subject to uncertainty and do not signify current or future property performance.

I-69 & EXIT 134

Martinsville, IN 46151

±45.25 ACRES



Demographics

| | 3 Mile | 5 Mile | 10 Mile |
|--------------------|-----------|----------|----------|
| Population | 2,070 | 11,370 | 34,629 |
| AVG. HH Income | \$102,264 | \$68,052 | \$79,582 |
| Daytime Population | 627 | 7,486 | 19,118 |

Traffic Count

I-69: 23,948 VPD

BO LEFFEL

Vice Chair
+1 317 639 0441
bo.leffel@cushwake.com

MATT KITE, J.D.

Director
+1 317 616 3981
matt.kite@cushwake.com

One American Square, Suite 1800
Indianapolis, IN 46282
Main +1 317 639 0515
Fax +1 317 639 0504
cushmanwakefield.com