



FOR LEASE

CENTRAL COURT

37600 CENTRAL COURT, NEWARK, CA



PROPERTY HIGHLIGHTS

- Office and Industrial Units
- Newly Remodeled Common Areas and Atrium
- Common Breakroom
- Building Power: 21 kV / 12,000 Amp at 480/277 Volts
- Great Central Location with Easy Access to Highway 880 and Highway 101 via the Dumbarton Bridge



Scott Dever
Managing Director
+1 408 615 3457
scott.dever@cushwake.com
LIC #01890552

300 Santana Row, Fifth Floor
San Jose, CA 95128
main +1 408 615 3400

cushmanwakefield.com

Cushman & Wakefield Copyright 2025. No warranty or representation, express or implied, is made to the accuracy or completeness of the information contained herein, and same is submitted subject to errors, omissions, change of price, rental or other conditions, withdrawal without notice, and to any special listing conditions imposed by the property owner(s). As applicable, we make no representation as to the condition of the property (or properties) in question.



**CUSHMAN &
WAKEFIELD**

FOR LEASE

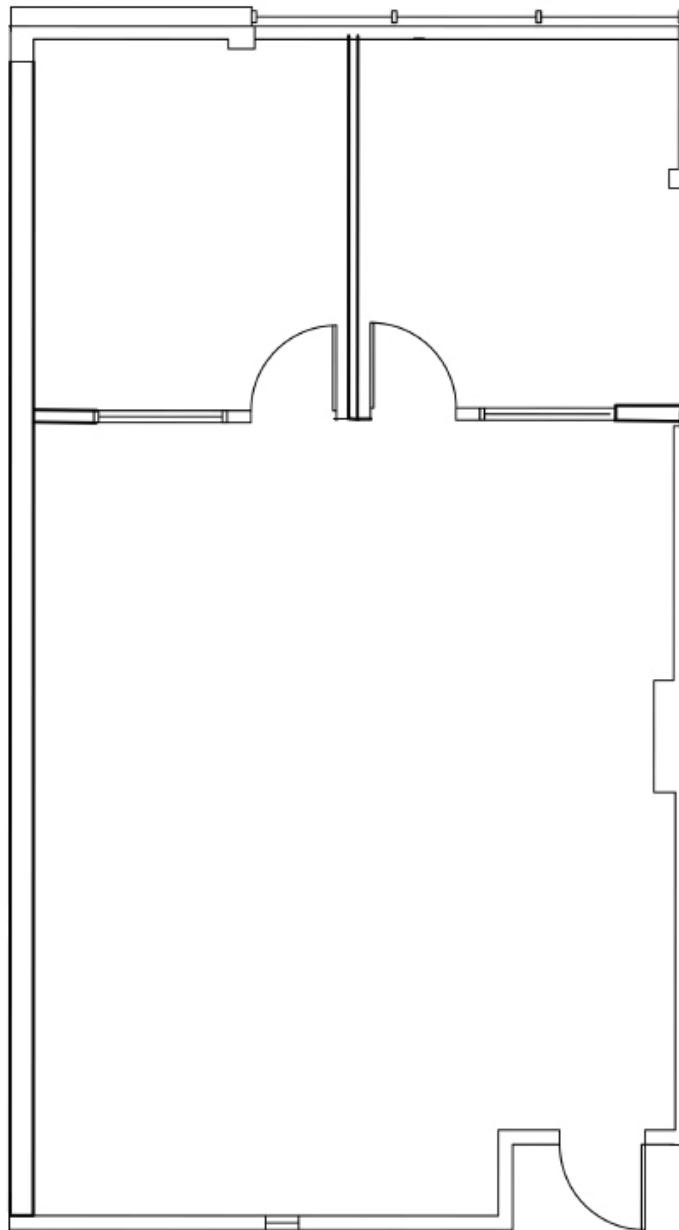
CENTRAL COURT

37600 CENTRAL COURT, NEWARK, CA

FLOOR PLAN

Second Floor Office Unit

Suite 212 | ±965 SF



Scott Dever

Managing Director

+1 408 615 3457

scott.dever@cushwake.com

LIC #01890552

300 Santana Row, Fifth Floor
San Jose, CA 95128
main +1 408 615 3400

cushmanwakefield.com



**CUSHMAN &
WAKEFIELD**

FOR LEASE

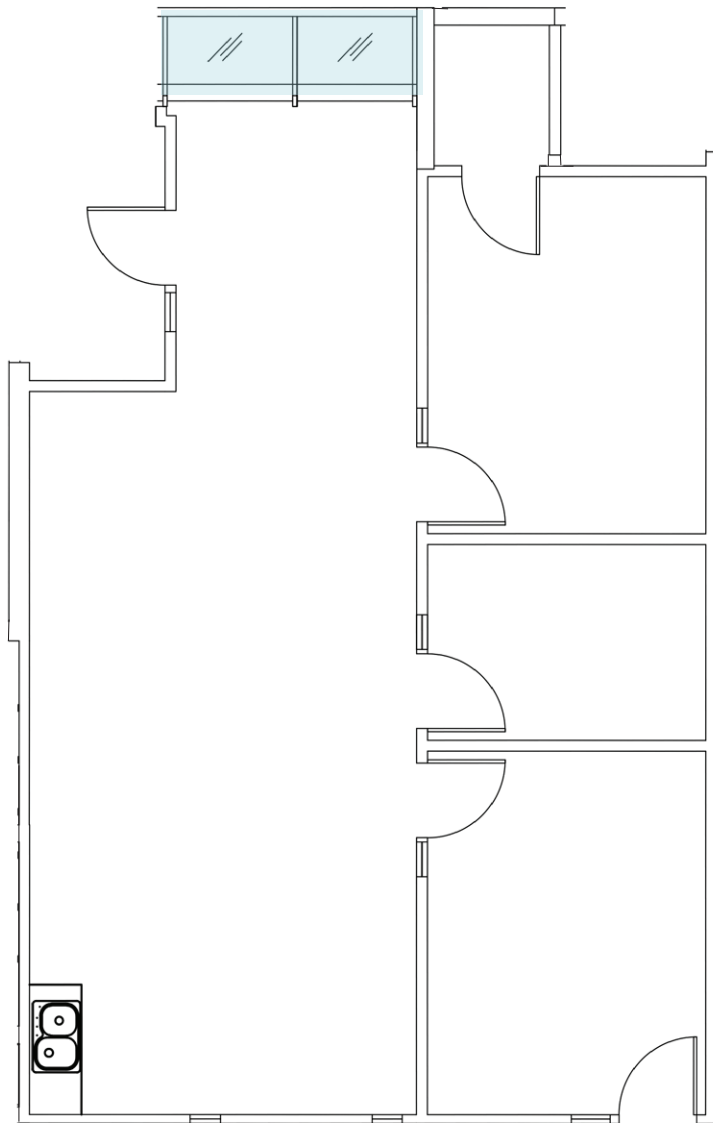
CENTRAL COURT

37600 CENTRAL COURT, NEWARK, CA

FLOOR PLAN

Second Floor Office Unit

Suite 224 | ±1,126 SF



 Angled Windows

Scott Dever

Managing Director

+1 408 615 3457

scott.dever@cushwake.com

LIC #01890552

300 Santana Row, Fifth Floor
San Jose, CA 95128
main +1 408 615 3400

cushmanwakefield.com



**CUSHMAN &
WAKEFIELD**

FOR LEASE

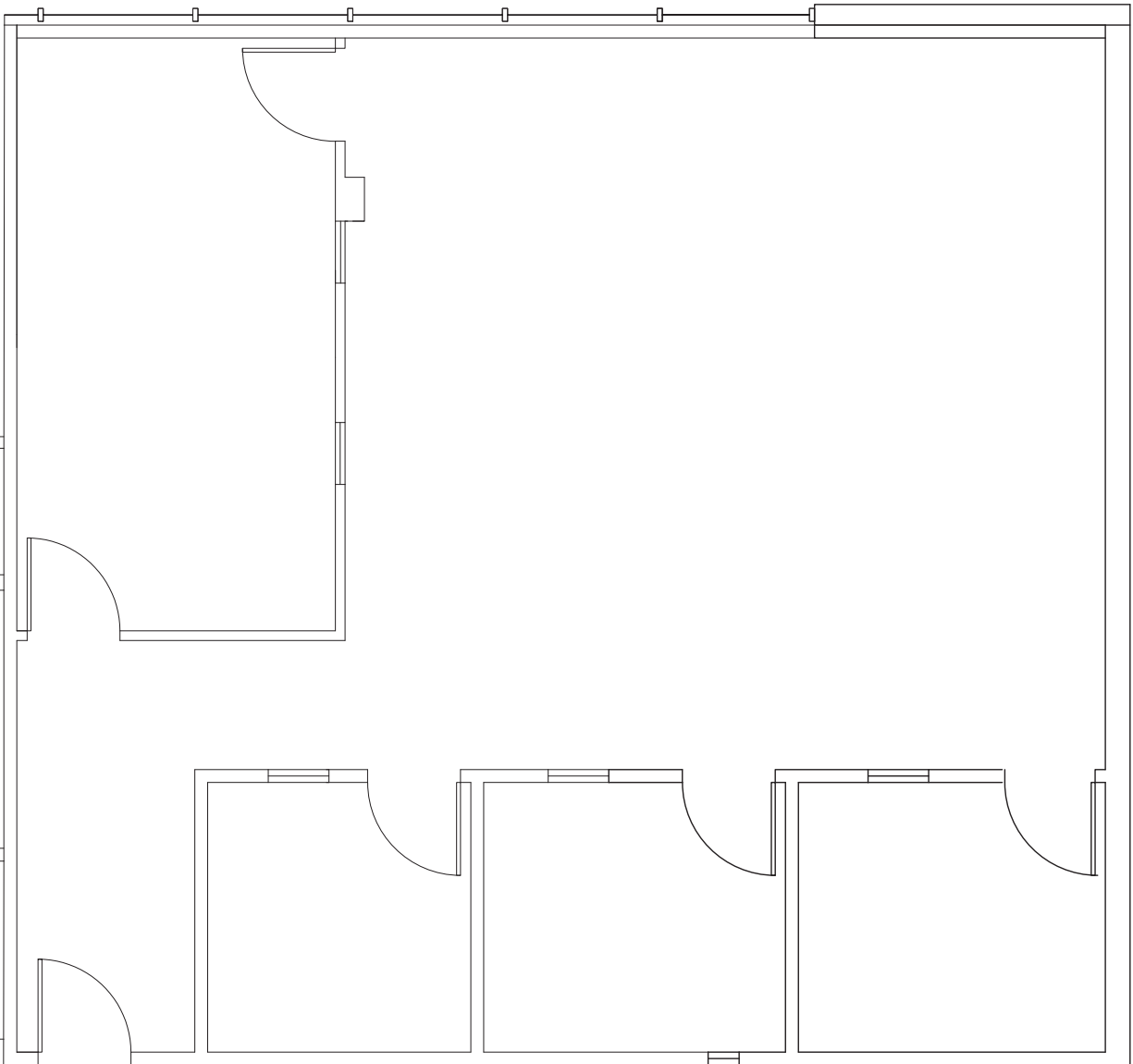
CENTRAL COURT

37600 CENTRAL COURT, NEWARK, CA

FLOOR PLAN

Second Floor Office Unit

Suite 260 | ±1,380 SF



Scott Dever

Managing Director

+1 408 615 3457

scott.dever@cushwake.com

LIC #01890552

300 Santana Row, Fifth Floor
San Jose, CA 95128
main +1 408 615 3400

cushmanwakefield.com



**CUSHMAN &
WAKEFIELD**

FOR LEASE

CENTRAL COURT

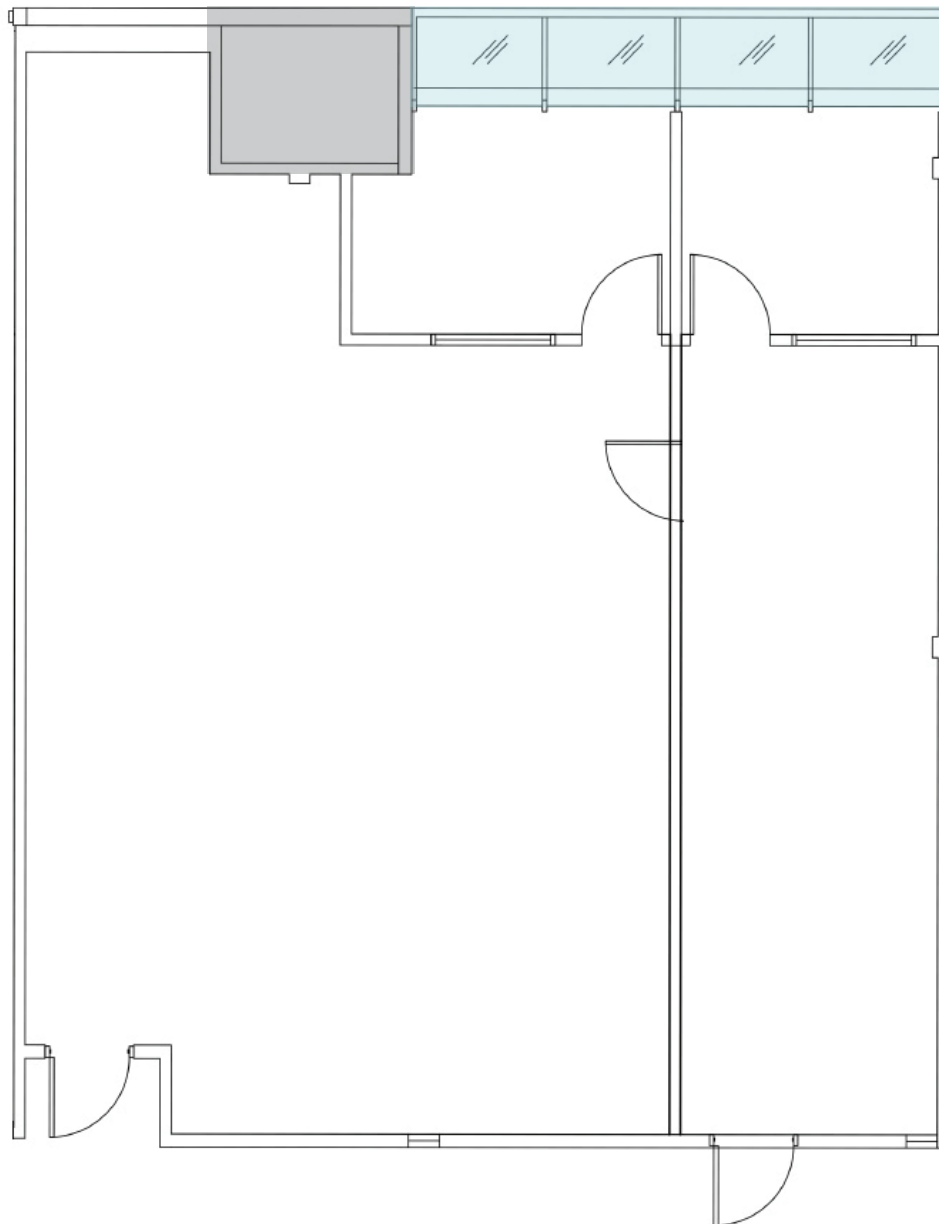
37600 CENTRAL COURT, NEWARK, CA


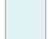
FLOOR PLAN

Second Floor Office Units

Suite 213A/214

±1,156 SF - ±1,606 SF



-  AC Shaft
-  Angled Windows

Scott Dever
Managing Director
+1 408 615 3457
scott.dever@cushwake.com
LIC #01890552

300 Santana Row, Fifth Floor
San Jose, CA 95128
main +1 408 615 3400

cushmanwakefield.com



**CUSHMAN &
WAKEFIELD**

FOR LEASE

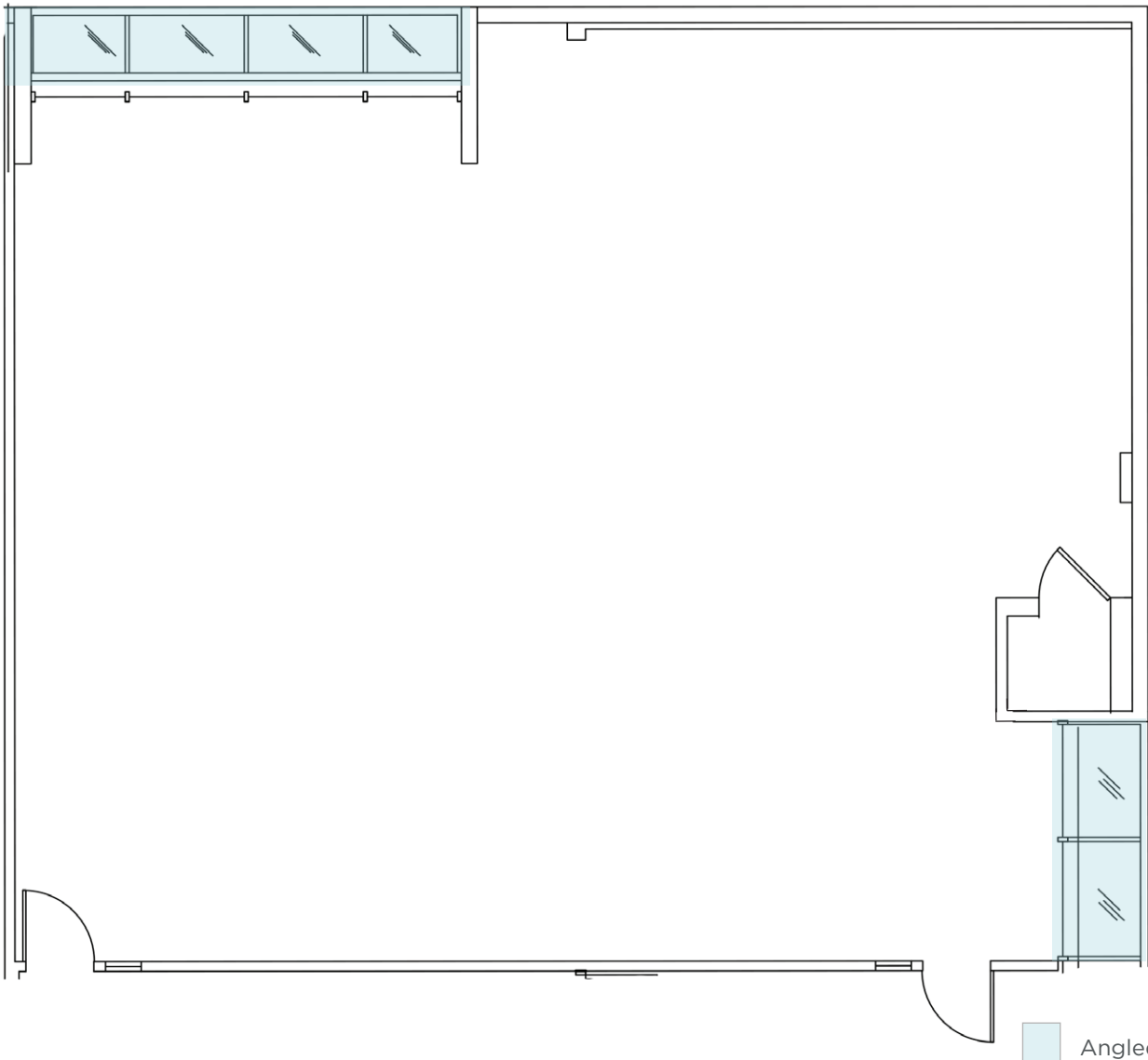
CENTRAL COURT

37600 CENTRAL COURT, NEWARK, CA

FLOOR PLAN

Second Floor Office Unit

Suite 230 | ±2,109 SF



Scott Dever
Managing Director
+1 408 615 3457
scott.dever@cushwake.com
LIC #01890552

300 Santana Row, Fifth Floor
San Jose, CA 95128
main +1 408 615 3400

cushmanwakefield.com



**CUSHMAN &
WAKEFIELD**

FOR LEASE

CENTRAL COURT

37600 CENTRAL COURT, NEWARK, CA

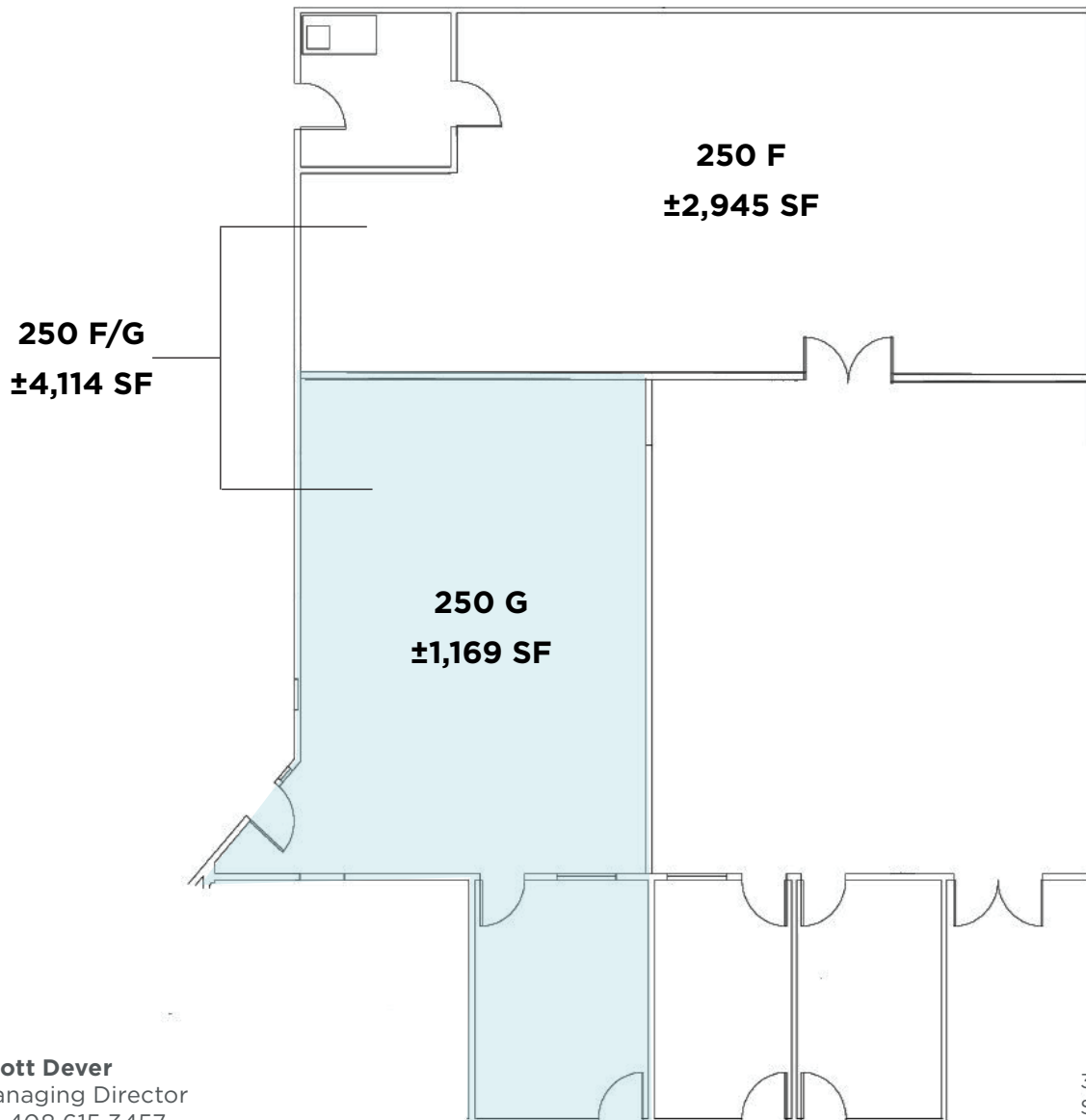
FLOOR PLAN

Second Floor Office Units

Suite 250 F/G | $\pm 4,114$ SF

Suite 250 G | $\pm 1,169$ SF

Suite 250 F | $\pm 2,945$ SF



Scott Dever
Managing Director
+1 408 615 3457
scott.dever@cushwake.com
LIC #01890552

300 Santana Row, Fifth Floor
San Jose, CA 95128
main +1 408 615 3400

cushmanwakefield.com