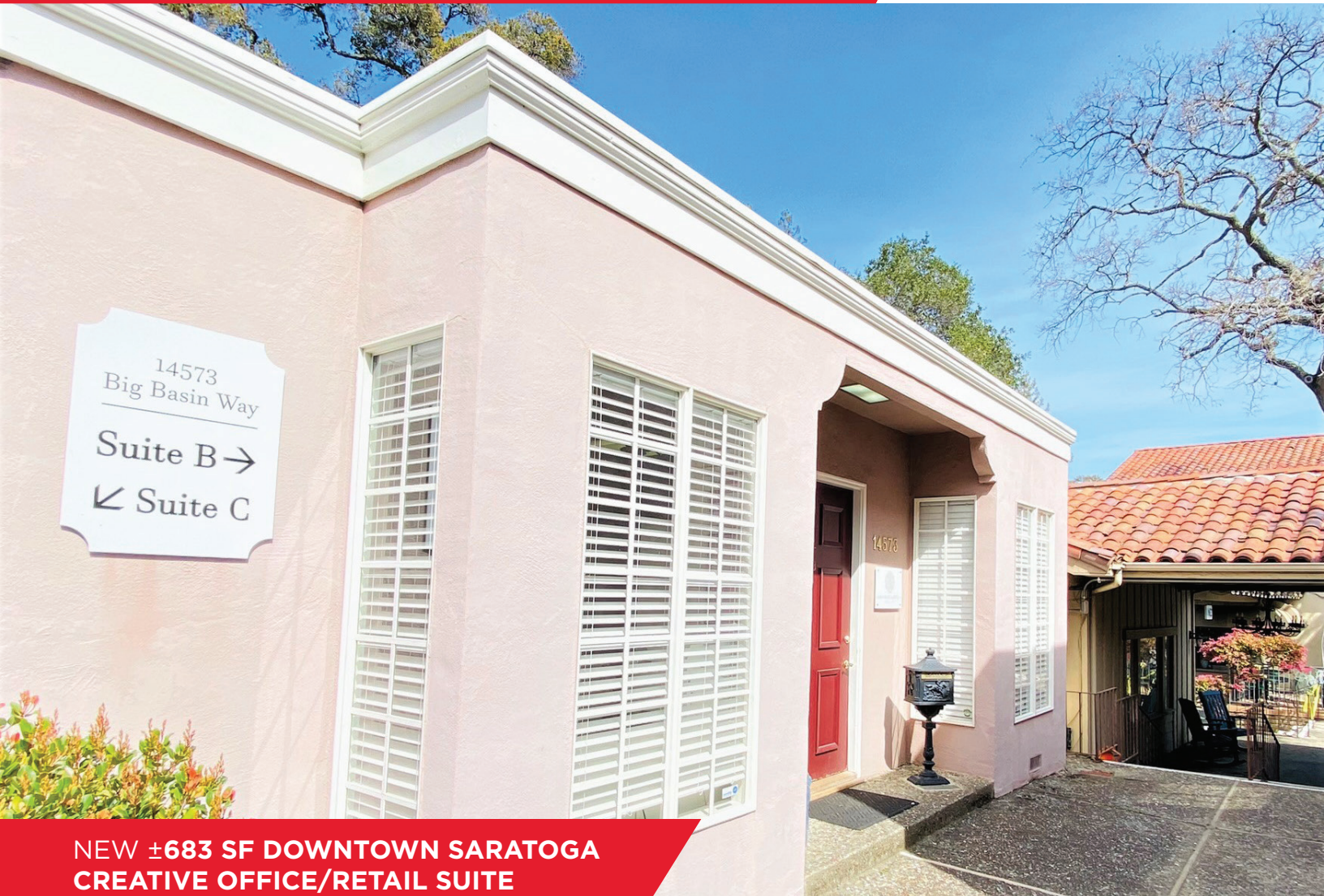


FOR LEASE

14573 Big Basin Way, Suite B
Saratoga, CA



**NEW ±683 SF DOWNTOWN SARATOGA
CREATIVE OFFICE/RETAIL SUITE**

PROPERTY HIGHLIGHTS

- Rare Retail/Office Suite
- In the Heart of Saratoga
- Steps to Big Basin Way
- Excellent Natural Light
- Ample Parking Nearby
- Great Views of Downtown
- Excellent Access to Highways 85, 17 & 280

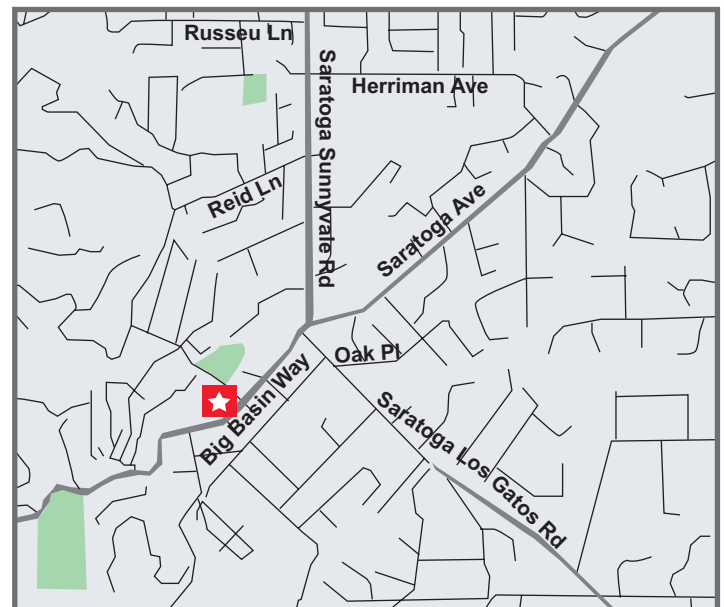
Contact

CLARK STEELE

+1 408 436 3653
clark.steele@cushwake.com
Lic:01995379

BRETT KROUSKUP

+1 408 615 3432
brett.krouskup@cushwake.com
Lic:01904239



FOR LEASE

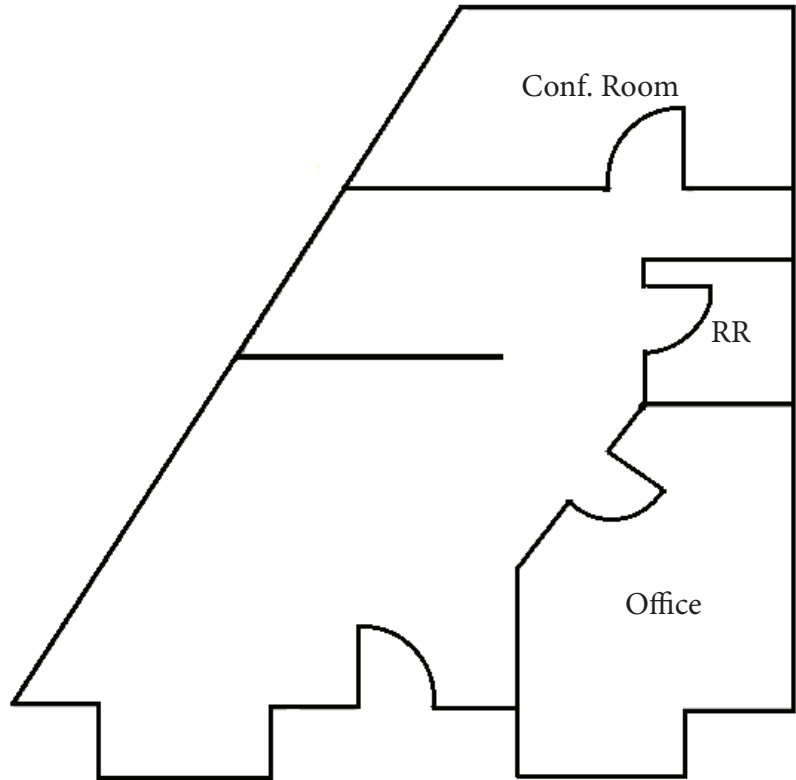
14573 Big Basin Way, Suite B
Saratoga, CA



FLOOR PLAN

±683 SF

- 1 Conference Room
- 1 Large Office
- Open Office Area



FOR LEASE

14573 Big Basin Way, Suite B
Saratoga, CA



SARATOGA DEMOGRAPHICS

	1 Mile	3 Miles	5 Miles
Population	6,379	44,745	197,349
Avg Household Income	\$318,409	\$304,840	\$245,633
Median House Value	\$2 Million	\$2 Million	\$1.7 Million

TRAFFIC COUNTS

Big Basin Way	14,800 ADT
---------------	-------------------

Contact

CLARK STEELE

+1 408 436 3653
clark.steele@cushwake.com
Lic:01995379

BRETT KROUSKUP

+1 408 615 3432
brett.krouskup@cushwake.com
Lic:01904239

The City of Saratoga is an attractive residential community with a small-town vibe. Known for its high quality of life, excellent schools and distinctive businesses.

14573 Big Basin Way is minutes away from:

- The Mountain Winery & Mountain Winery Concert Venue
- Montalvo Art Center (Villa Montalvo)
- Hakone Gardens
- Cinnabar Winery
- Cooper-Garrod Estate Vineyards
- Savannah-Chanelle Vineyards
- Big Basin Redwoods State Park