

FOR SUBLEASE

380 INTERNATIONALE BLVD, UNIT E

BOLINGBROOK, IL



16,905 SF AVAILABLE FOR SUBLEASE
Sublease Through 5/31/2027

\$9.95
GROSS/PSF/YR

16,905 SF AVAILABLE

 Piedmont Plastics

SPACE SPECIFICATIONS

Year Built: **2005**

AVAILABLE: **16,905 SF (Unit E)**

OFFICE: **1,903 SF**

CLEAR HEIGHT: **30'**

LOADING: **Four (4) Exterior Truck Docks**

DRIVE IN DOOR: **One (1) – 12' x 14'**

POWER: **Heavy, Given Unit Size**

SPRINKLER SYSTEM: **ESFR**

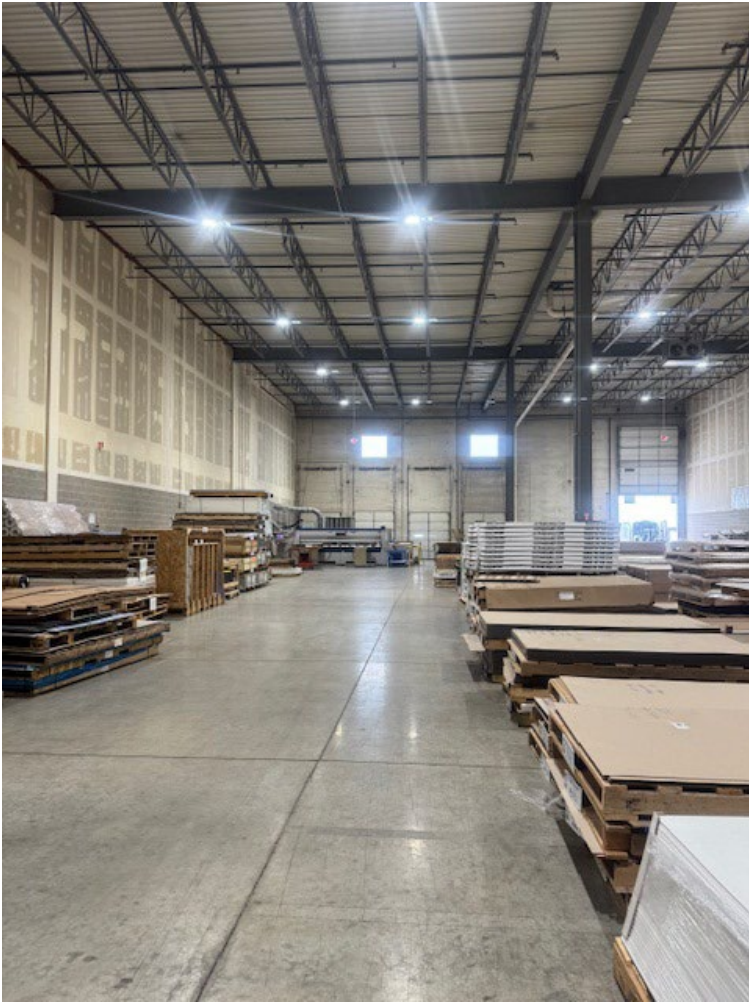
PROPERTY FEATURES

- Part of a 105,200 SF multi-tenant building
- Less than one (1) mile to full 4-way interchange at I-55/I-355
- Institutional – grade property
- Excellent labor market

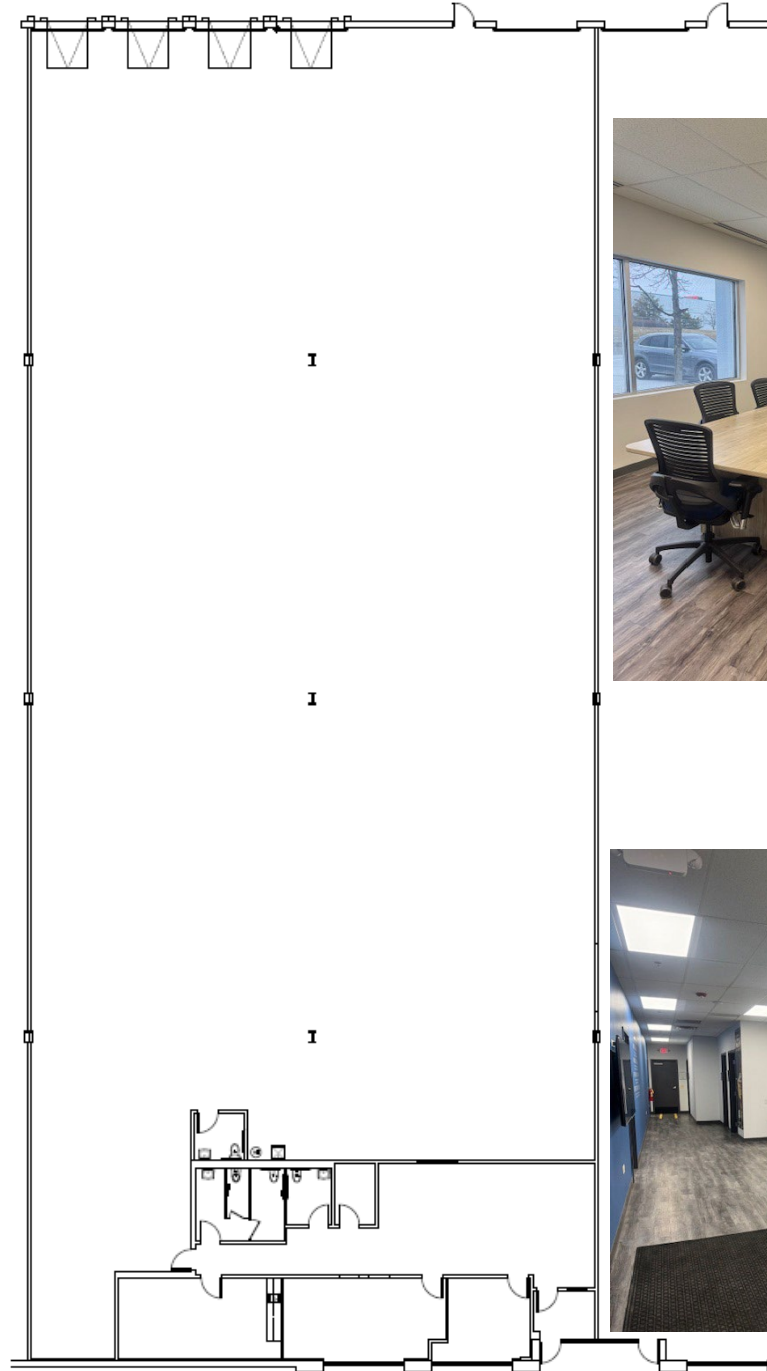
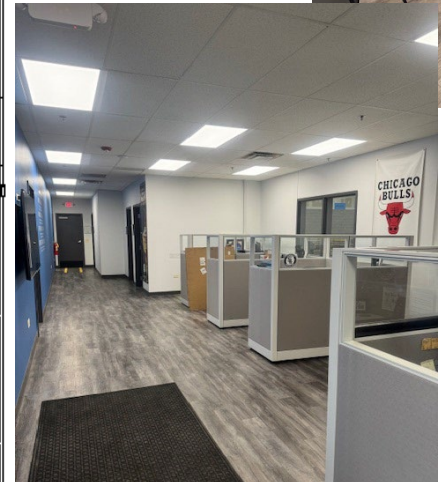
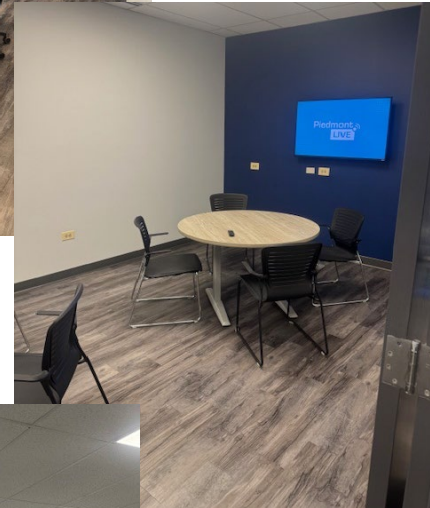


SPACE PLAN

Warehouse/Production Area



Office Area



**For More Information
Contact:**

Christopher Porter, SIOR
Executive Managing Director
+1 847 772 1302
chris.porter@cushwake.com

Full 4-way Interchange

South Bolingbrook Drive



Full 4-way Interchange

Joliet Road

Internationale Parkway

