

STONE POINT CORPORATE CENTER
SP

FOR LEASE

**1478 Stone Point Drive
Roseville, CA**



 **CUSHMAN &
WAKEFIELD**

Property Highlights

Stone Point Corporate Center is a Class A office and retail development in Sacramento's most dynamic submarket—Roseville, CA. Stone Point is the only five-story office building in Roseville and it provides easy access to I-80 and Highway 65. The mixed-use development includes 40,000 sf of high-end retail fronting Eureka Road—offering numerous options within walking distance, including some of the area's finest restaurants, shops and entertainment venues.

BUILDING AMENITIES

Two common conference rooms, fitness center with showers and lockers, ground floor food with a coffee kiosk

SIGNAGE

Building and monument signage available

PARKING

Four spaces per 1,000 sf leased, optional reserved and unreserved subterranean parking available

ACCESS

Easy access to the I-80 Freeway

VIEWS

Spectacular views of the Sierras and Sacramento Valley

SECURITY

On-site 24-hour security and security cameras





ADVENTIST HEALTH
HEADQUARTERS

STONE POINT
CORPORATE CENTER

FUTURE OFFICE
DEVELOPMENT

FUTURE OFFICE
DEVELOPMENT

RETAIL

- Paul Martin's
- American Grill
- Blue Nami
- Q1227
- Costa Vida
- Bloom Coffee and Tea
- My Thai Table
- Trademark Pizza

Floor 3

AVAILABILITIES:

Suite 320: ± 1,493 SF

**Available within 60 days*

Suite 350: ± 6,472 SF

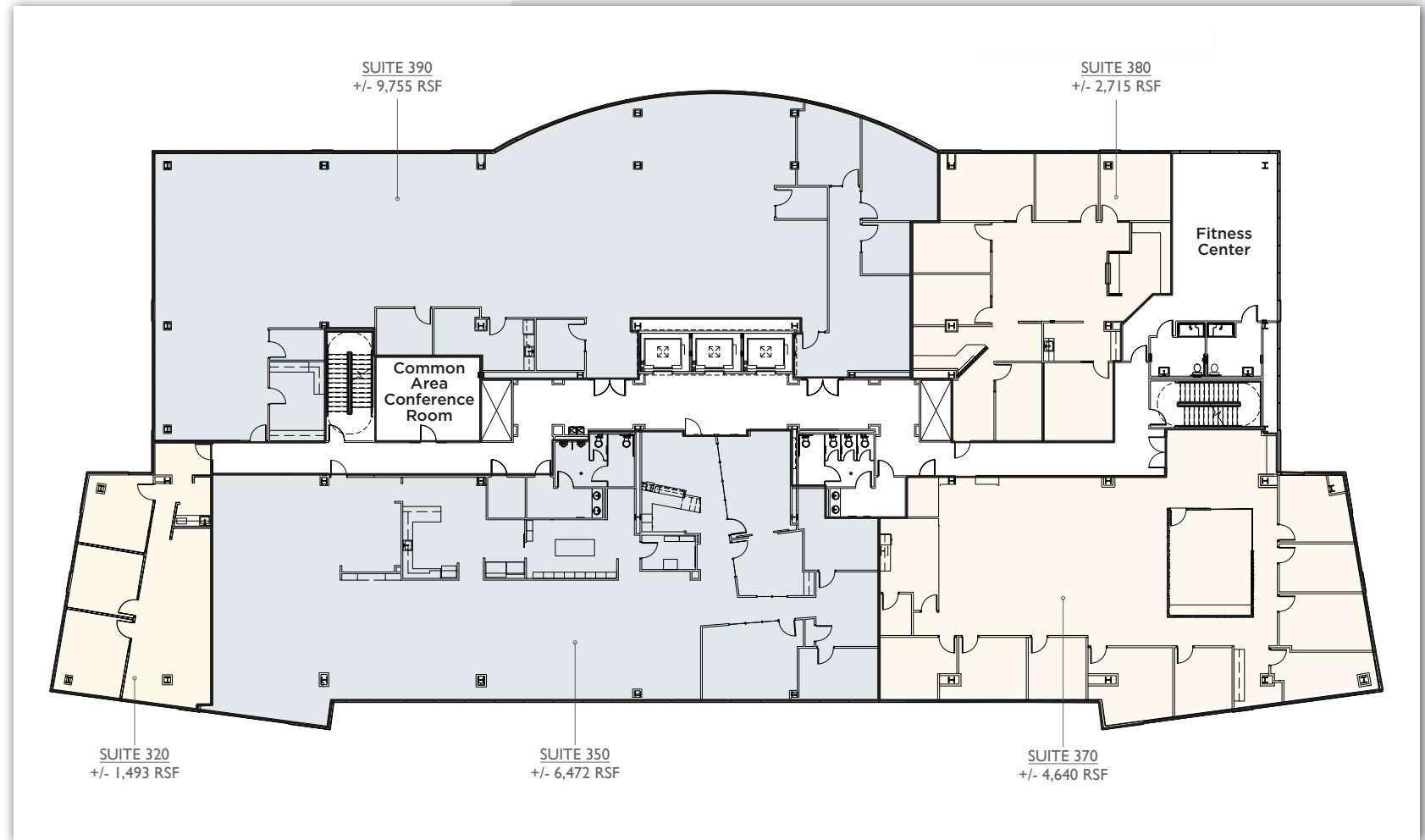
Suite 370: ± 4,640 SF

Suite 390: ± 9,755 SF

TOTAL: ± 22,360 SF

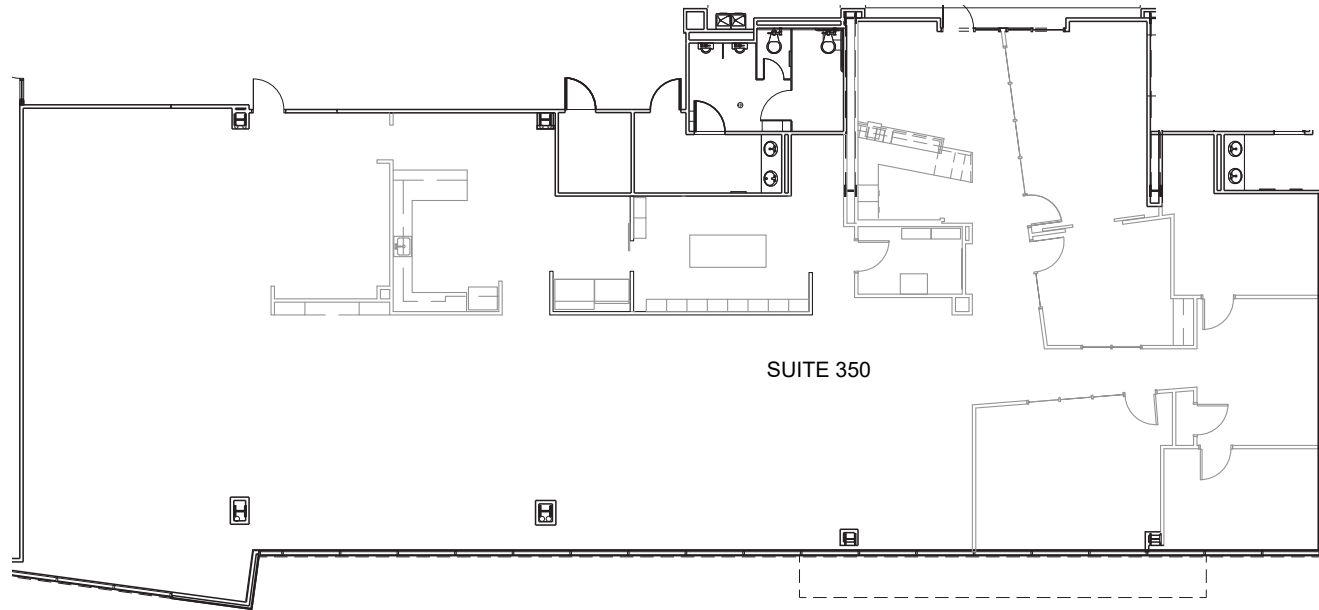
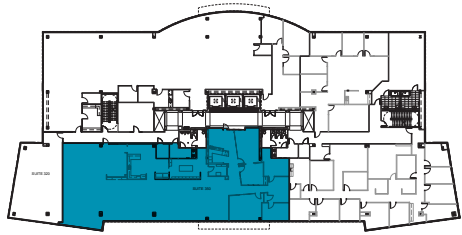
Suite 380: ± 2,715 SF - *May be available for a large tenant when combining all spaces, depending on tenant, term, use, etc.*

TOTAL: ± 25,075 SF



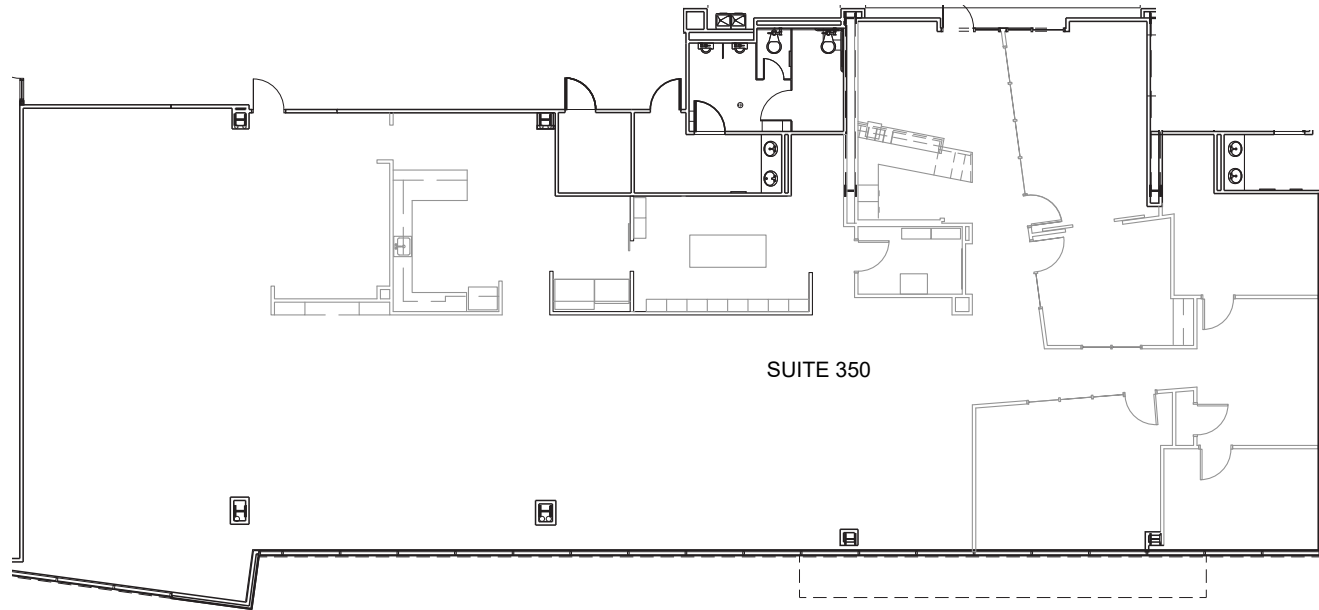
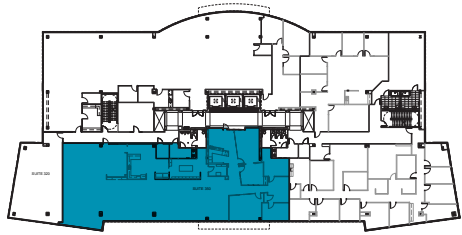
Floor 3

SUITE 350 | ±6,472



Floor 3

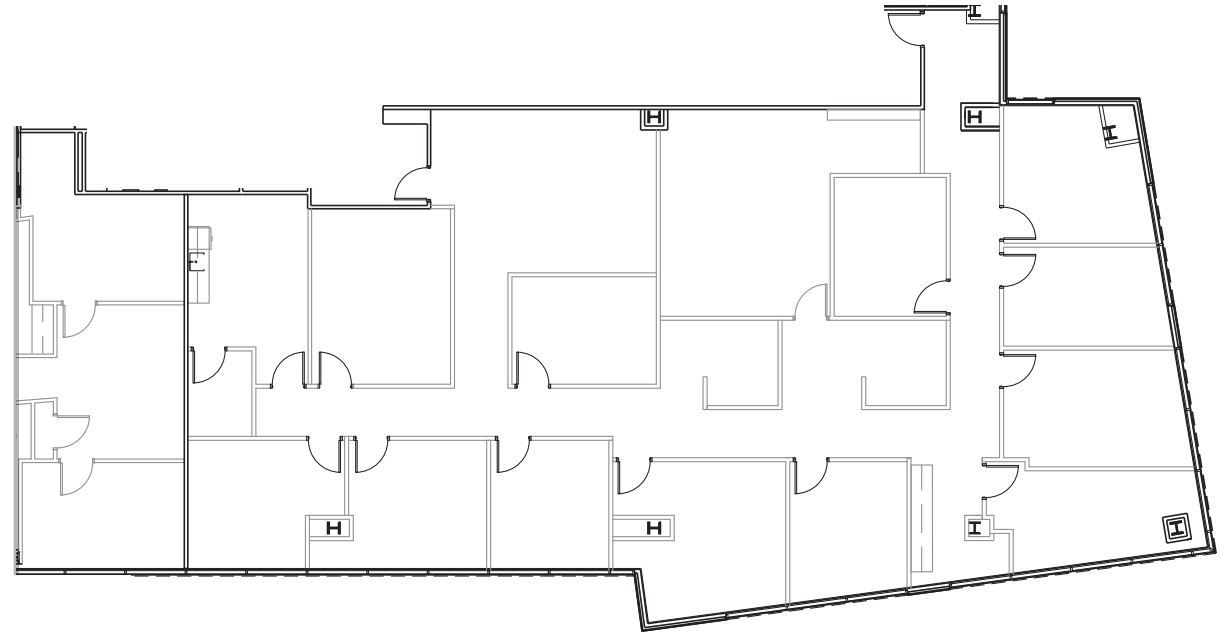
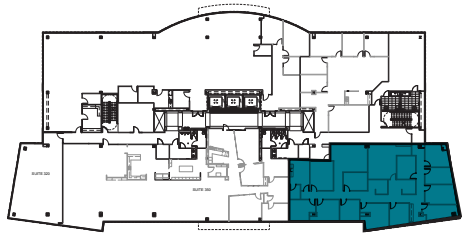
SUITE 350 | ±6,472



Floor 3

SUITE 370* | ±4,640

Available 08/01/2026

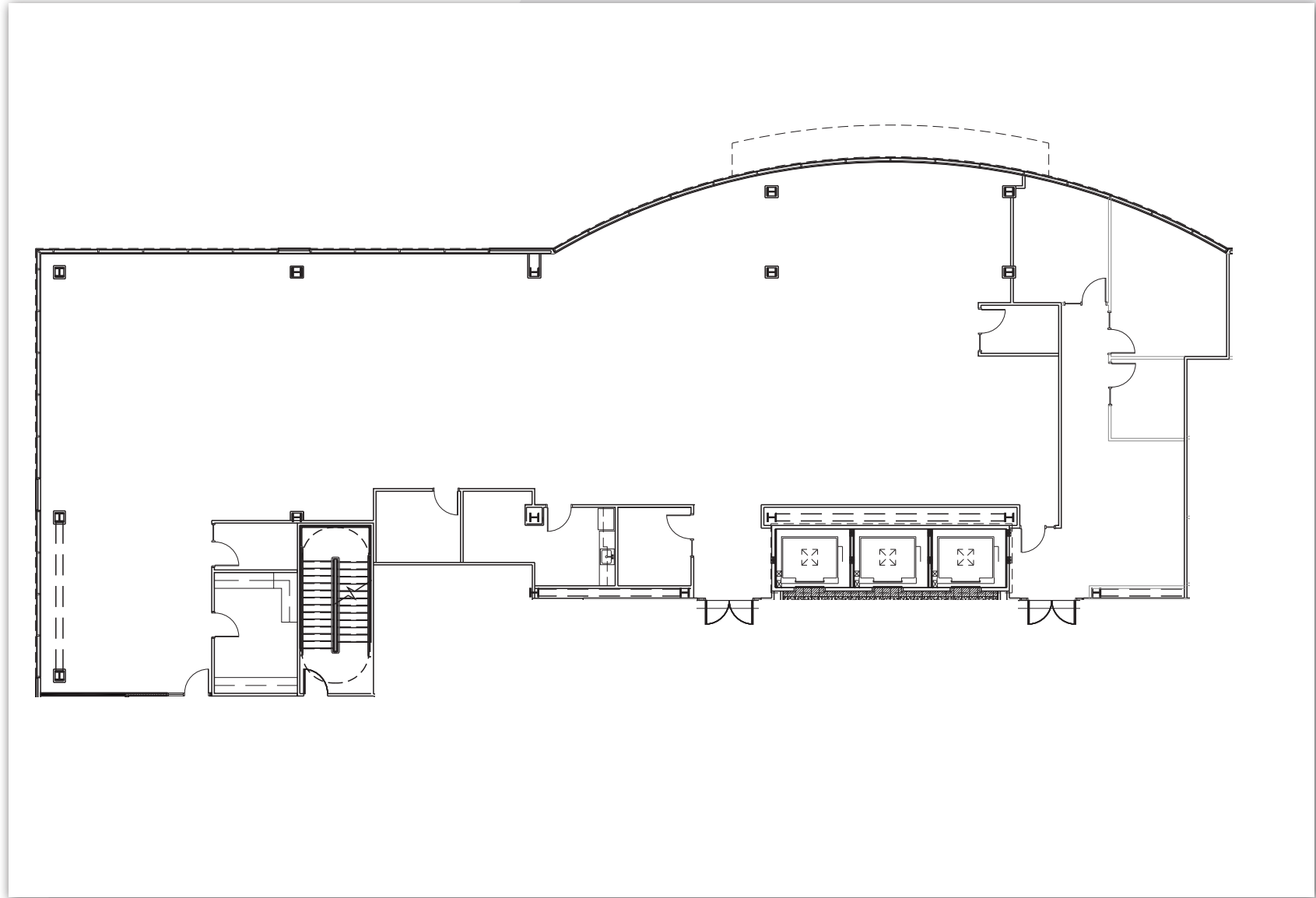
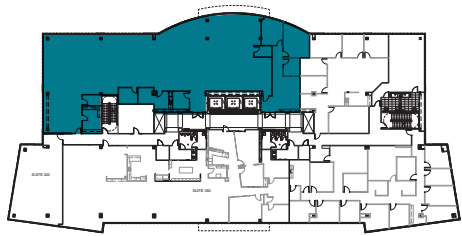


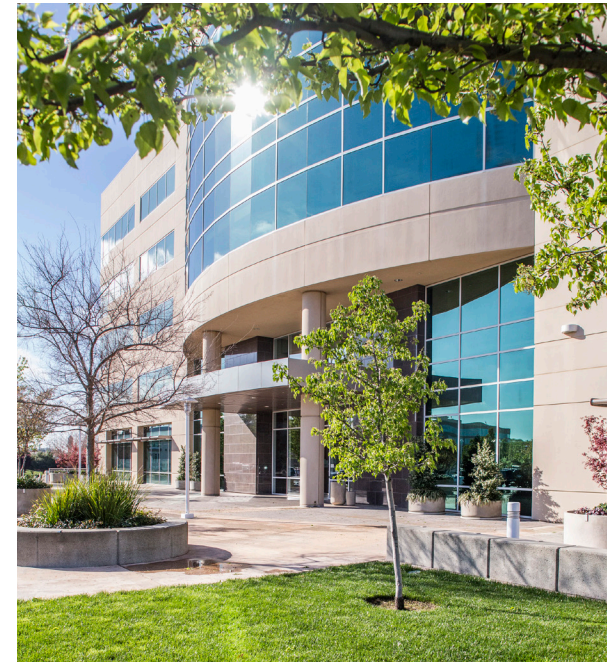
**Plan shown is a representation only.*

Floor 3

SUITE 390 | ±9,755

Available 08/01/2026





THE FOUNTAINS

WHOLE FOODS MARKET
MIKUNI
CALIFORNIA
ZOCALO

Westfield
Galleria at Roseville

Sutter Health
Starbucks

Sutter Health

LIFETIME
FITNESS

STONE POINT
CORPORATE CENTER

Adventist Health
HEADQUARTERS

Paul Mantini's
BLOOM
COFFEE & TEA

ROSEVILLE
Auto Mall

Ruen
Thai Restaurant
SIENNA
MODERN AMERICAN

FAT'S

California
BACK YARD

MIKUNI

BENNETT'S

Douglas Blvd.

Academy Blvd.

Eureka Blvd.



Contact Us

CHRIS SCHWARZE

Executive Director

+1 916 288 4803

chris.schwarze@cushwake.com

CA License #01291261

CHAD COOK, SIOR, CCIM

Senior Director

+1 916 764 1181

chad.cook@cushwake.com

CA License #01711687

400 Capitol Mall, Suite 1800

Sacramento, CA 95814

+1 916 288 4800



SP

STONE POINT CORPORATE CENTER

[View Site Specific COVID-19 Prevention Plan](#)

©2020 Cushman & Wakefield. All rights reserved. The information contained in this communication is strictly confidential. This information has been obtained from sources believed to be reliable but has not been verified. No warranty or representation, express or implied, is made as to the condition of the property (or properties) referenced herein or as to the accuracy or completeness of the information contained herein, and same is submitted subject to errors, omissions, change of price, rental or other conditions, withdrawal without notice, and to any special listing conditions imposed by the property owner(s). Any projections, opinions or estimates are subject to uncertainty and do not signify current or future property performance.

