

TOP FLOOR OFFICE WITH VIEWS



±5,943 SF FOR SUBLEASE

THE ROTUNDA

1515 Douglas Street, Victoria, BC V8W 2G4

FULLY FURNISHED
PLUG & PLAY OFFICE

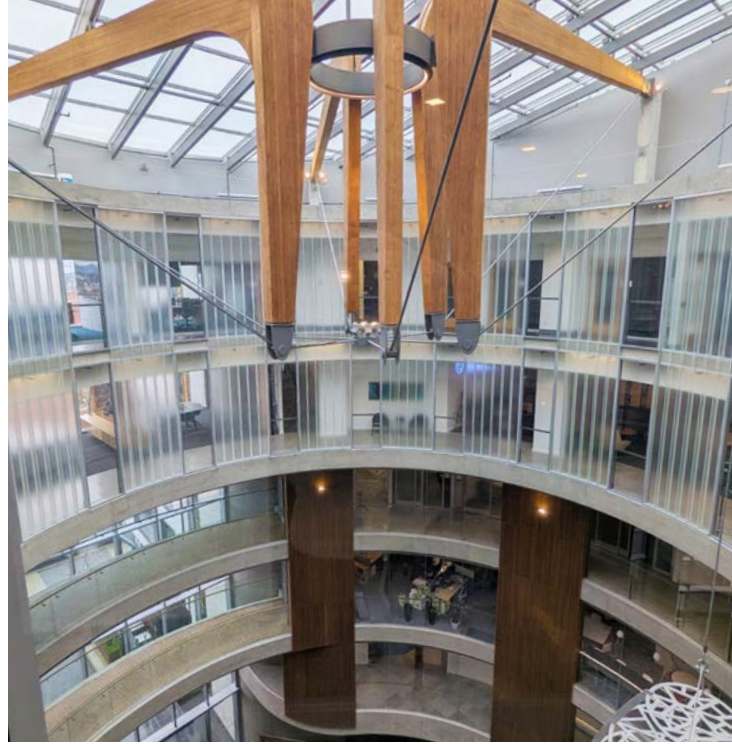


COLLEEN AUSTIN

Cushman & Wakefield
Associate Vice President
+1 250 410 3003

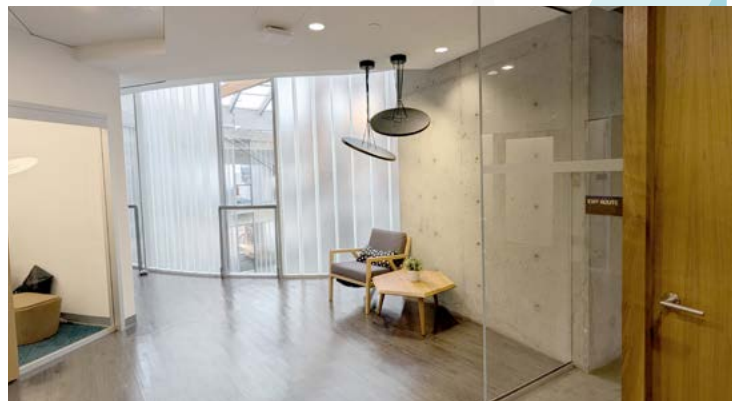
colleen.austin@ca.cushwake.com





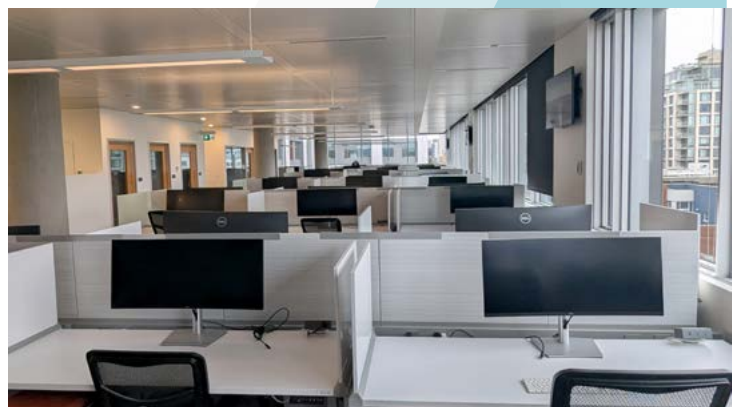
PROPERTY HIGHLIGHTS

- Premier Class AA Office Building in Downtown Victoria with ground floor retail amenities
- Prime Downtown location across from Victoria City Hall with excellent access to transit, amenities, and services.
- Robust building amenities: Fitness Centre for subtenant use, showers & changing facilities, secure bike storage.
- 24-hour on-site building security
- Secure underground parking available with EV charging stations
- Building is LEED Platinum certified

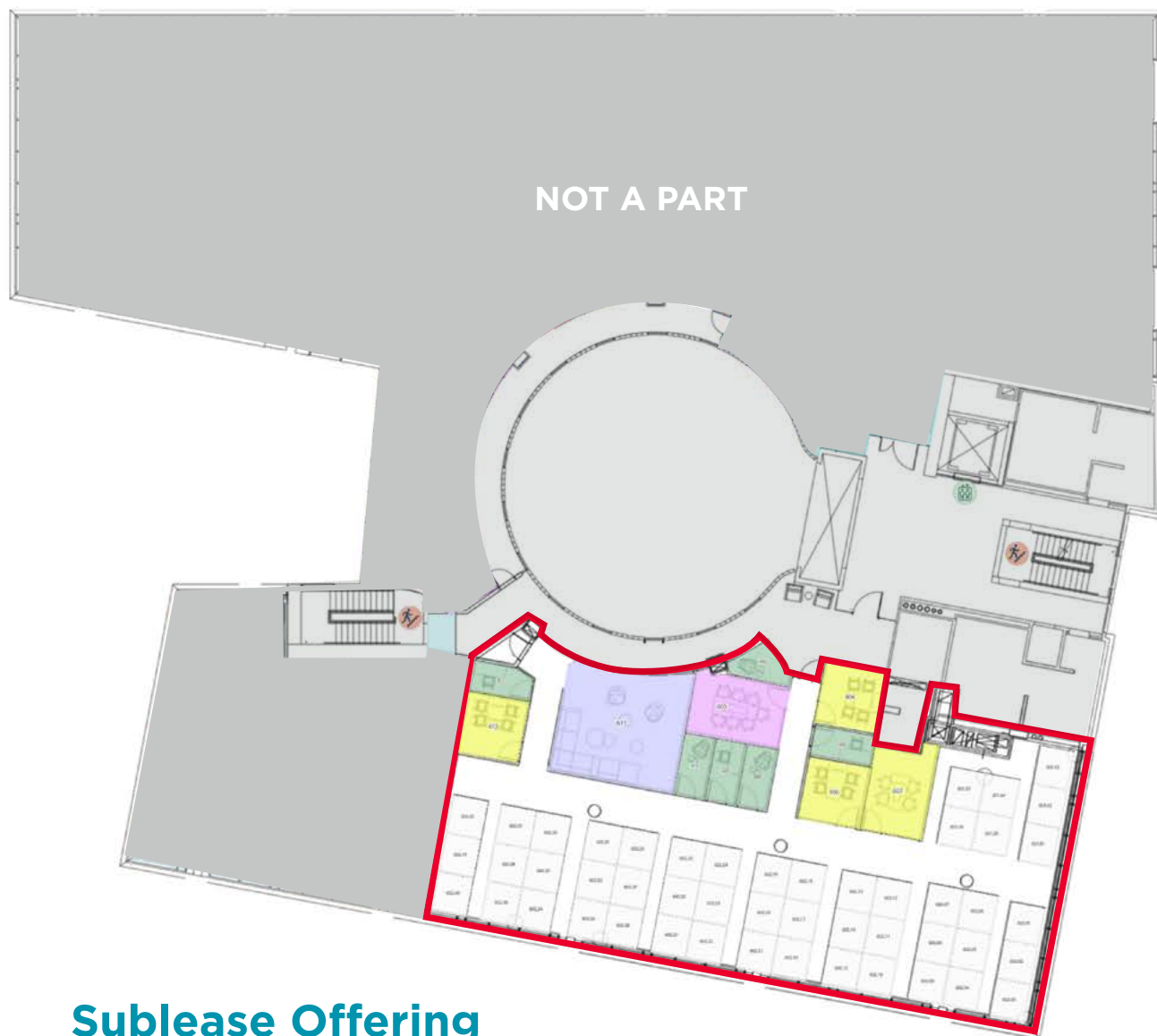


PLUG & PLAY OFFICE

- ±5,943 RSF available on the top (6th) floor, featuring stunning city and water views.
- Offered fully furnished with high-end office furniture ideal for an immediate move-in.
- Layout designed for efficiency and collaboration.
- Sublease term Through June 30, 2028.



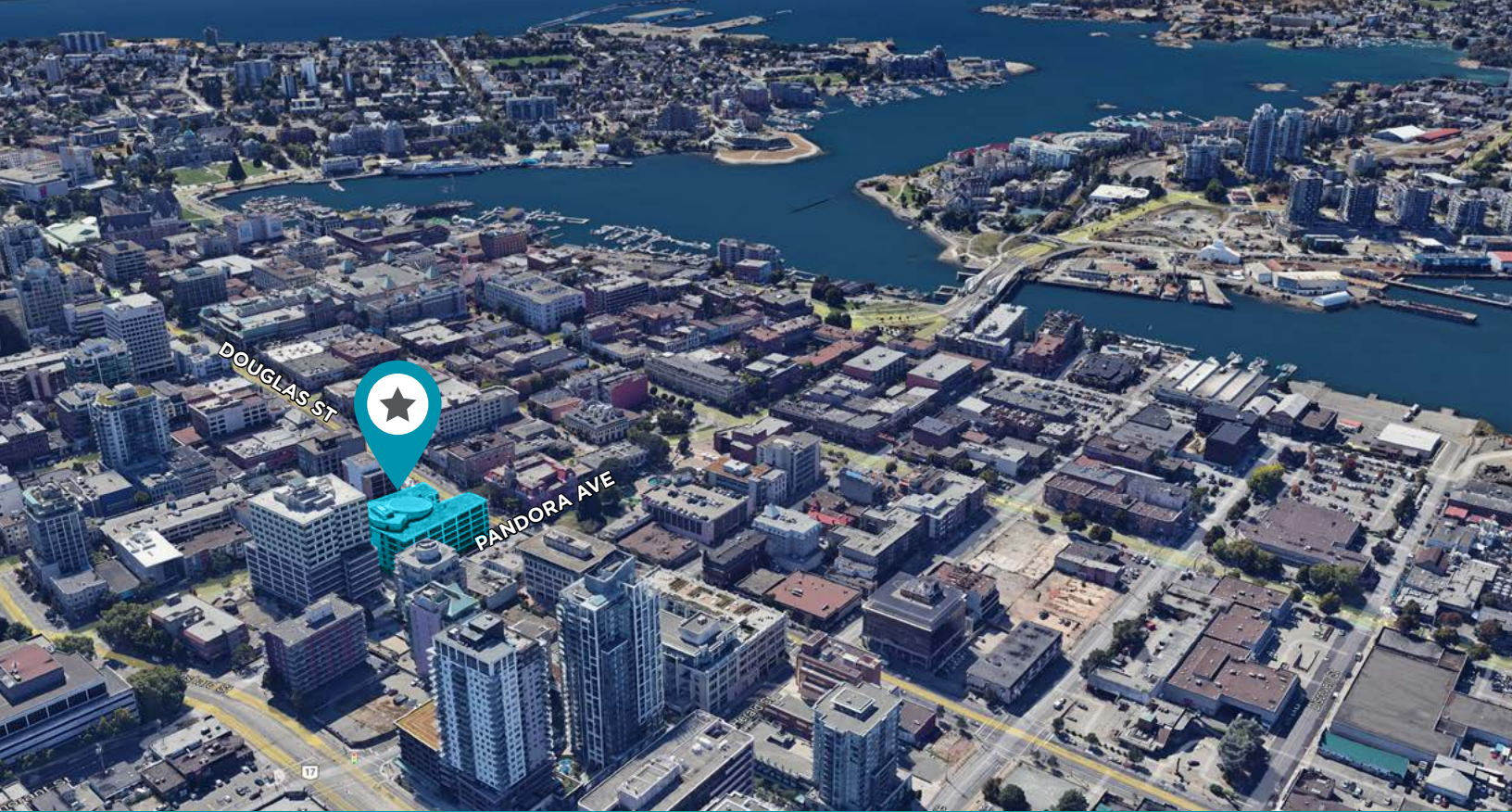
SUITE FLOORPLAN



Sublease Offering

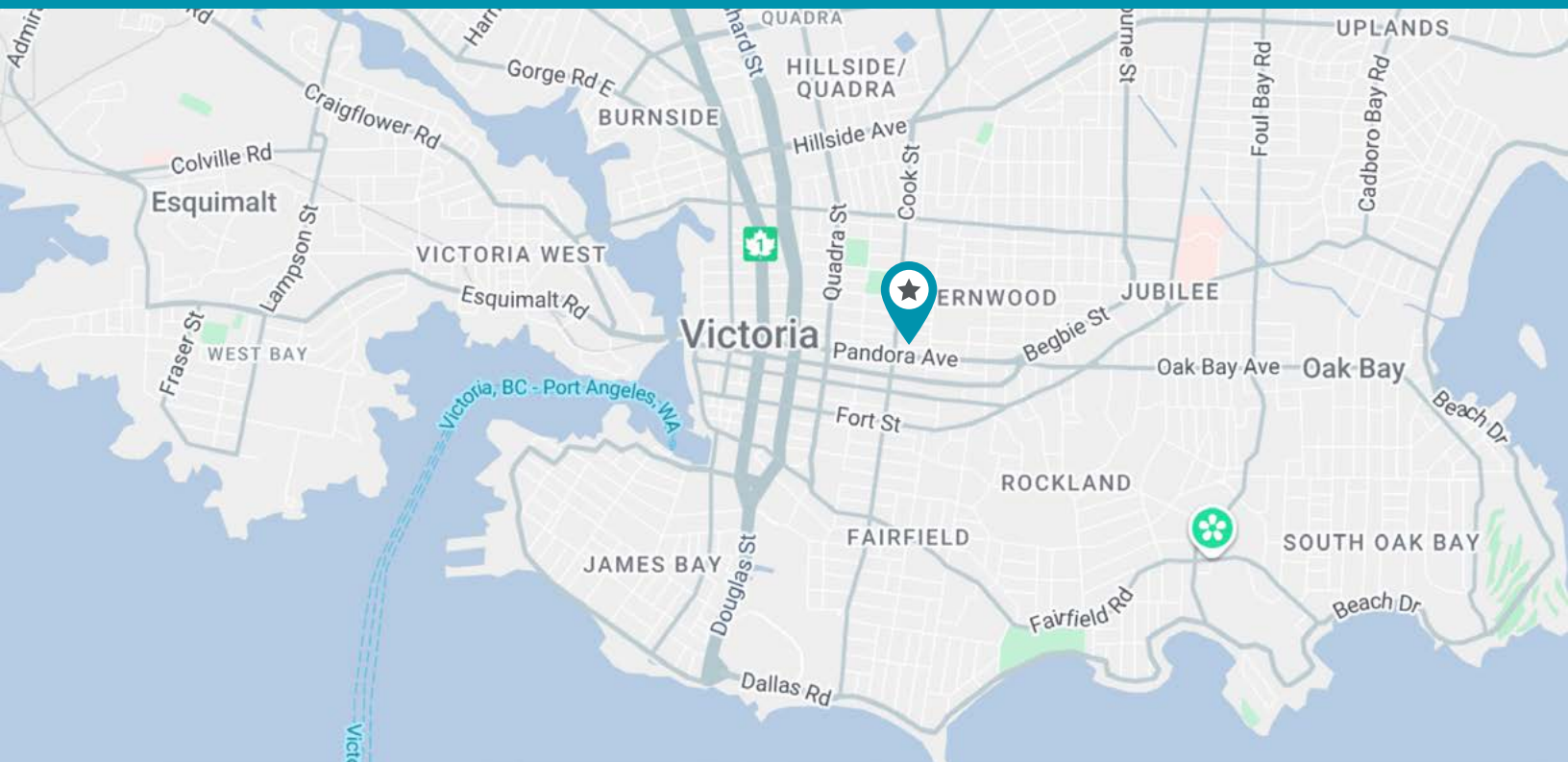
- 49 Cubes
- 6 Phone Rooms (1-2 person)
- 4 Huddle Rooms (3-5 person)
- 1 Small Conference Room (6-9 person)
- Open Collaboration Space

Common Area



LOCATION

Located in the heart of Downtown Victoria, this premier Class A office building sits directly across from City Hall, offering immediate access to transit, retail, dining, and key civic amenities. The highly visible downtown address boasts exceptional city and water views, enhancing an already unmatched downtown setting.



730 View Street, Suite 340 | Victoria, BC V8W 3Y7 | +1 250 410 3000 | cushmanwakefield.com

©2026 Cushman & Wakefield. All rights reserved. The information contained in this communication is strictly confidential. This information has been obtained from sources believed to be reliable but has not been verified. NO WARRANTY OR REPRESENTATION, EXPRESS OR IMPLIED, IS MADE AS TO THE CONDITION OF THE PROPERTY (OR PROPERTIES) REFERENCED HEREIN OR AS TO THE ACCURACY OR COMPLETENESS OF THE INFORMATION CONTAINED HEREIN, AND SAME IS SUBMITTED SUBJECT TO ERRORS, OMISSIONS, CHANGE OF PRICE, RENTAL OR OTHER CONDITIONS, WITHDRAWAL WITHOUT NOTICE, AND TO ANY SPECIAL LISTING CONDITIONS IMPOSED BY THE PROPERTY OWNER(S). ANY PROJECTIONS, OPINIONS OR ESTIMATES ARE SUBJECT TO UNCERTAINTY AND DO NOT SIGNIFY CURRENT OR FUTURE PROPERTY PERFORMANCE.

