

FOR SUBLEASE
38,799 SF AVAILABLE



2700 BUDDEKE DRIVE
LOUISVILLE, KY 40206

PROPERTY HIGHLIGHTS

Elevate your operations at 2700 Buddeke Drive. This is a full building sublease opportunity for a dedicated and distinguished local or regional headquarters. This Class A building was built new in 2020 and features modern design and infrastructure accompanied by expansive river views. The building provides a balanced configuration of dedicated offices, open work spaces, and meeting/amenity spaces. This modern office complex is offered fully-furnished providing a seamless transition for potential occupiers.

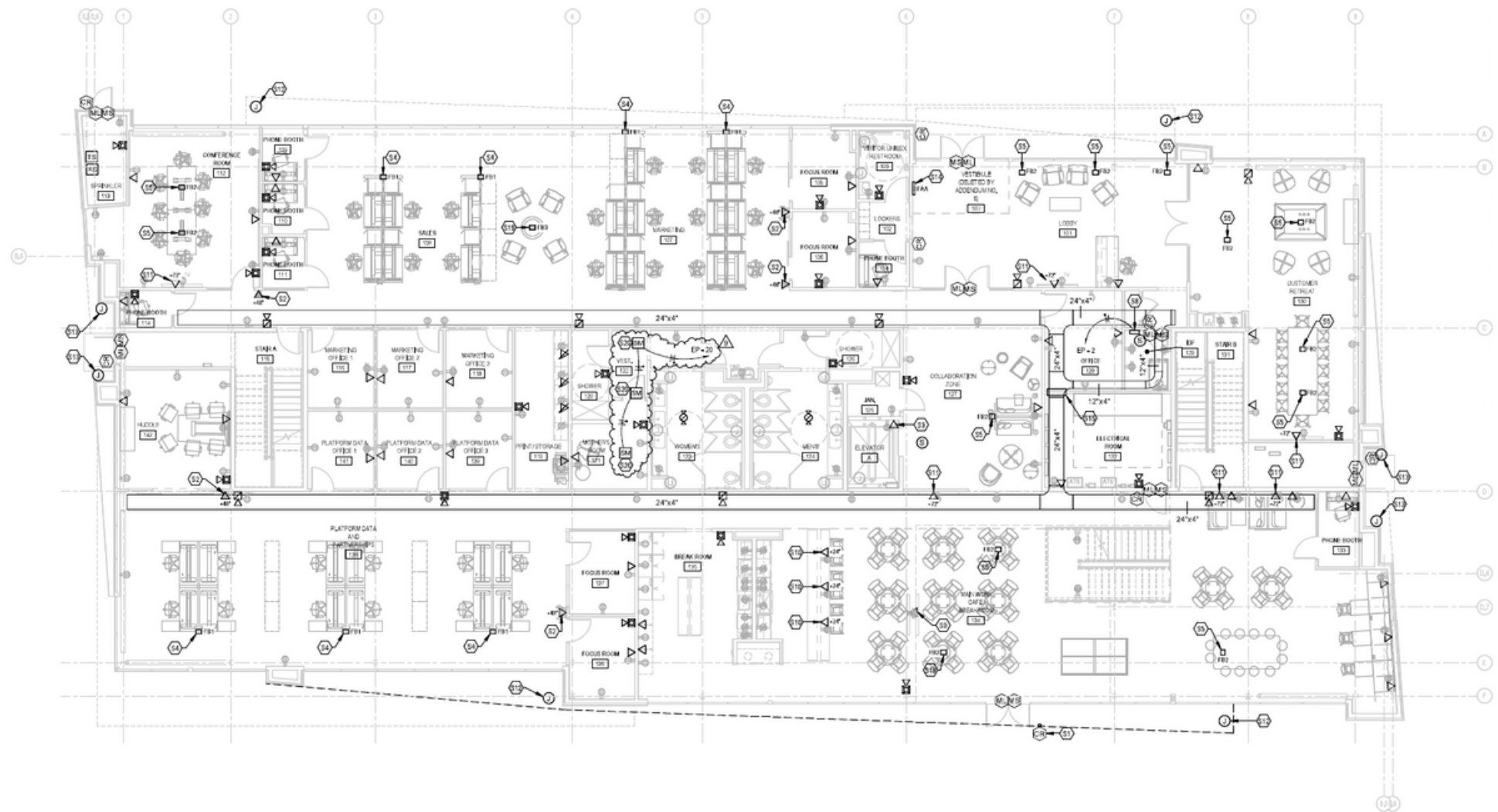
2700 Buddeke Drive offers premium accessibility between Louisville's East End and Central Business Districts. Its is positioned with connectivity in mind, located within 1 mile of I-71.

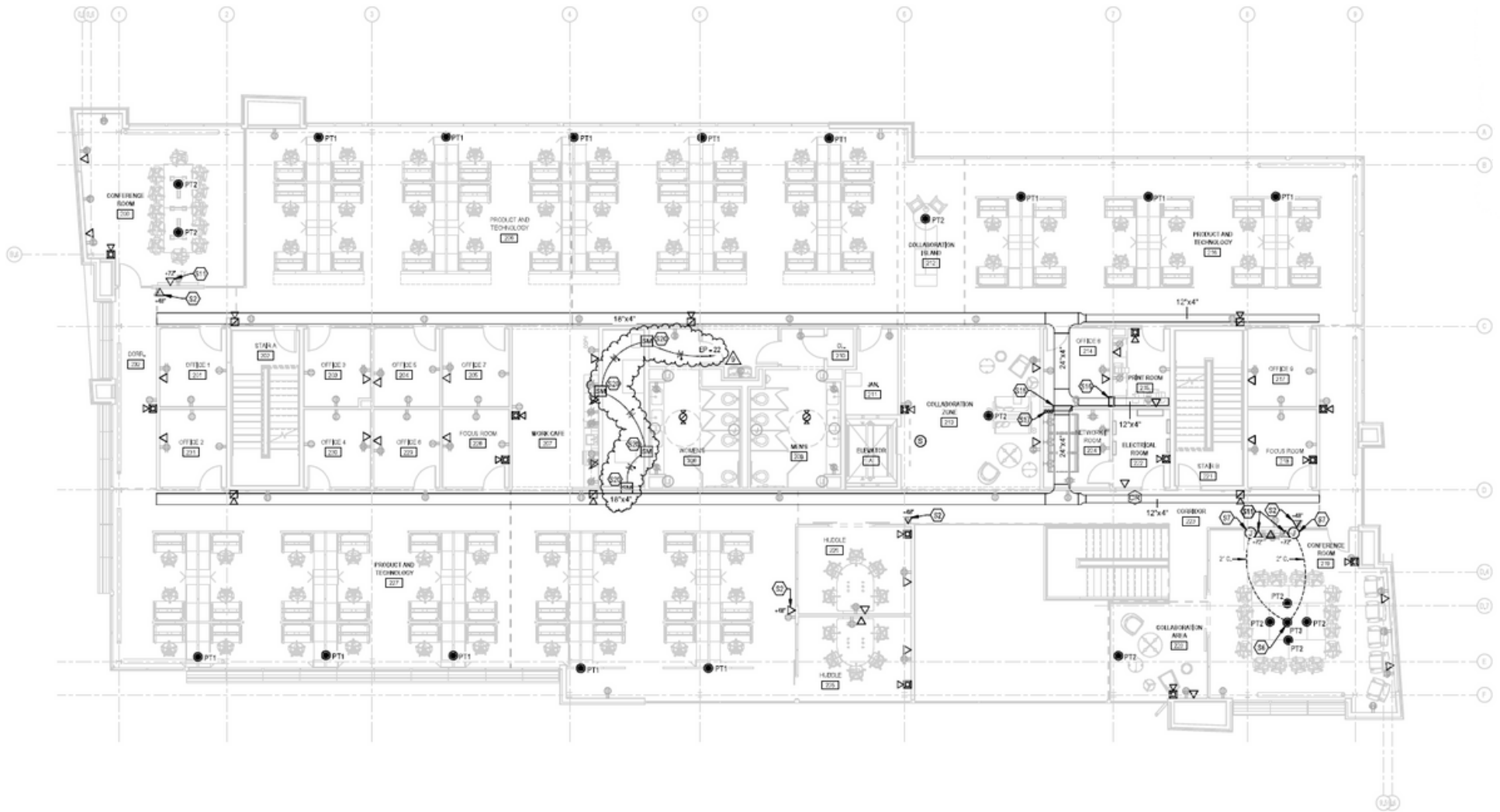
Building Class:	Class A
Building Size:	38,799 SF
Floors:	3 floors
Average Floorplate:	12,933 SF
Year Built:	2020
Parking:	174 spaces (4.48/1,000 SF)
FF&E:	Fully furnished
Lease Expiration:	10/31/2029
Zoning:	CM



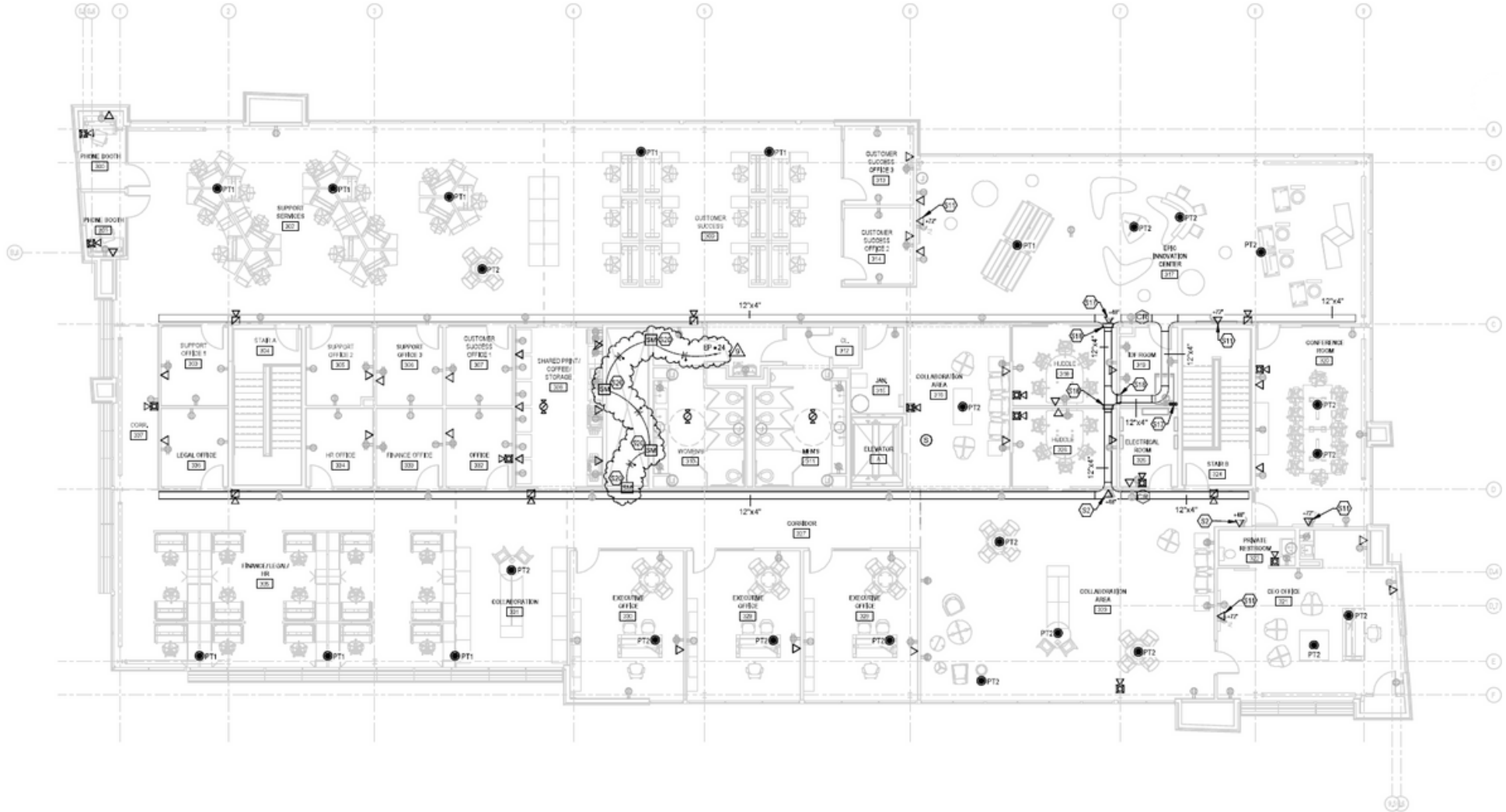


PROPERTY LOCATION

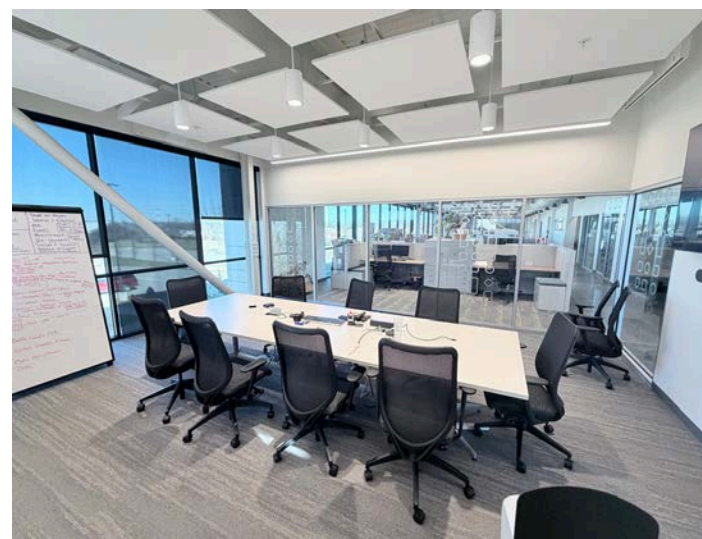
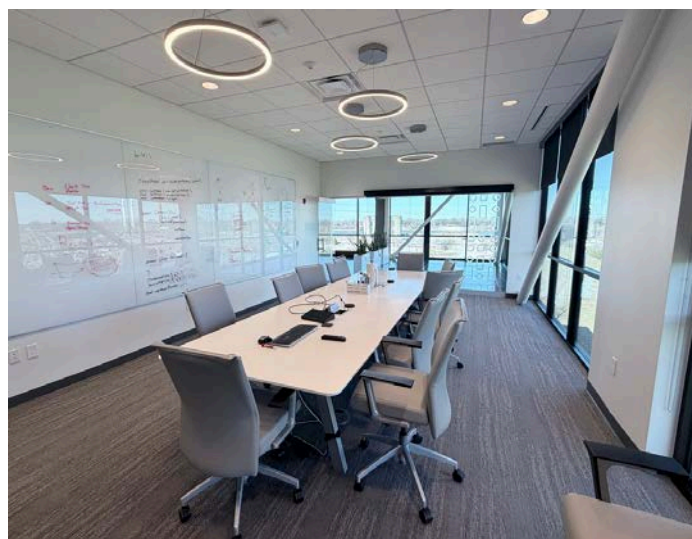
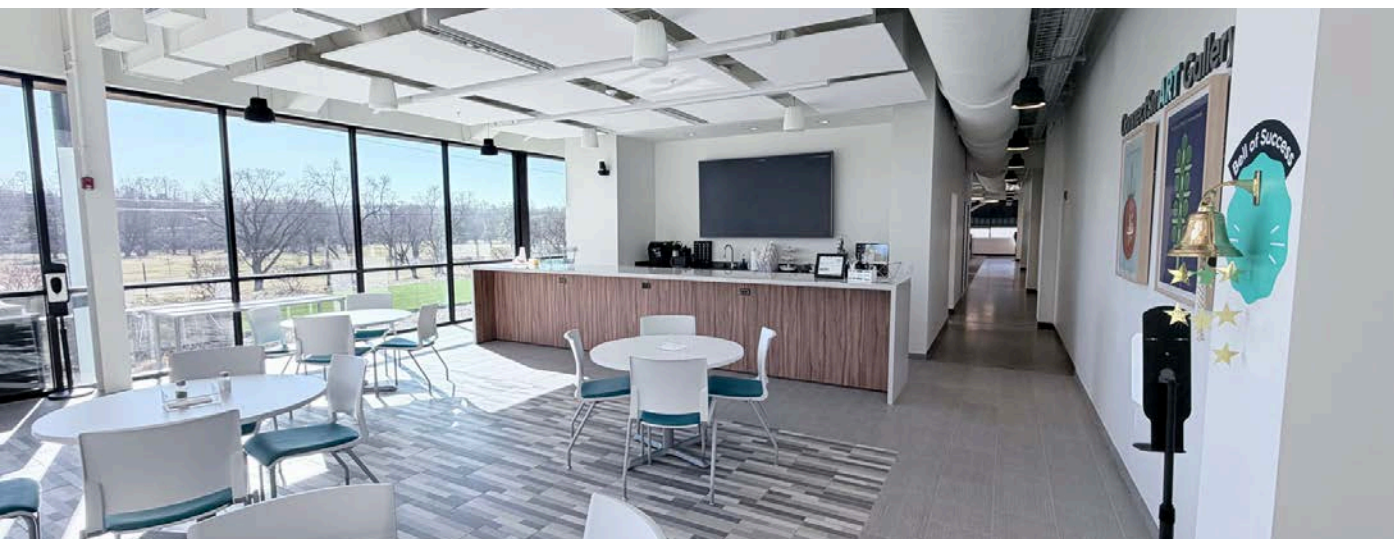
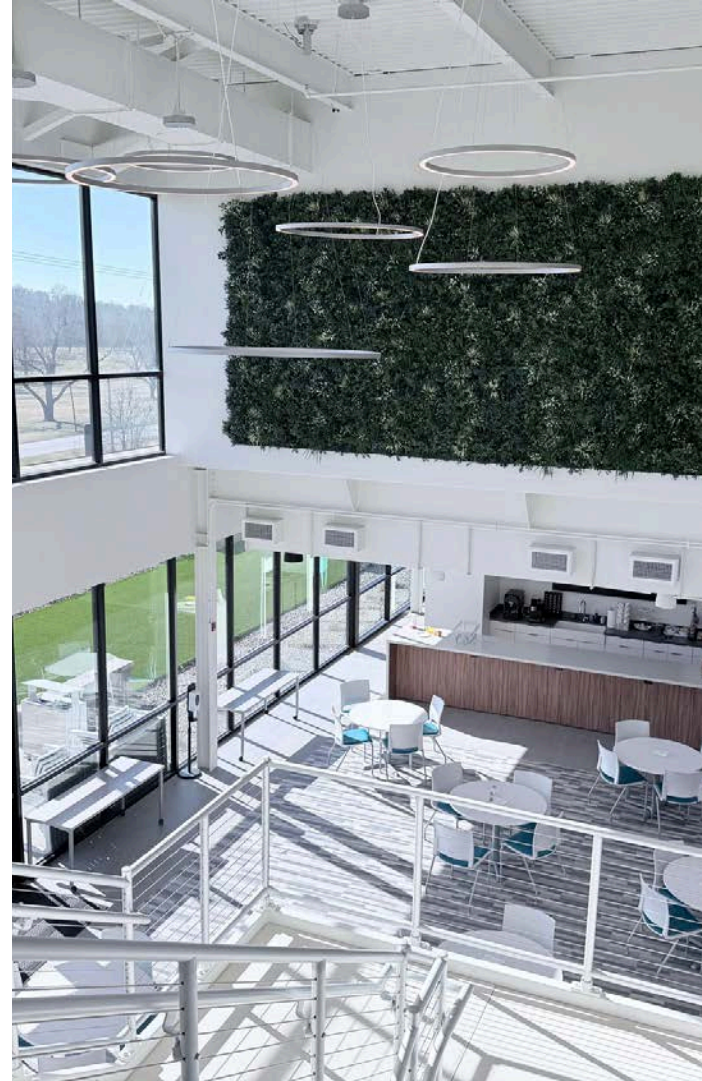




2ND FLOOR
12,993 SF



3RD FLOOR
12,933 SF



CONTACT INFORMATION

SAM GRAY, CCIM

Senior Associate

samgray@commercialkentucky.com

+1 502 719 3240

BRENT DOLEN, SIOR, CCIM

Senior Director

bdolen@commercialkentucky.com

+1 502 719 3262



©2026 Cushman & Wakefield. All rights reserved. The information contained in this communication is strictly confidential. This information has been obtained from sources believed to be reliable but has not been verified. NO WARRANTY OR REPRESENTATION, EXPRESS OR IMPLIED, IS MADE AS TO THE CONDITION OF THE PROPERTY (OR PROPERTIES) REFERENCED HEREIN OR AS TO THE ACCURACY OR COMPLETENESS OF THE INFORMATION CONTAINED HEREIN, AND SAME IS SUBMITTED SUBJECT TO ERRORS, OMISSIONS, CHANGE OF PRICE, RENTAL OR OTHER CONDITIONS, WITHDRAWAL WITHOUT NOTICE, AND TO ANY SPECIAL LISTING CONDITIONS IMPOSED BY THE PROPERTY OWNER(S). ANY PROJECTIONS, OPINIONS OR ESTIMATES ARE SUBJECT TO UNCERTAINTY AND DO NOT SIGNIFY CURRENT OR FUTURE PROPERTY PERFORMANCE.

Independently Owned & Operated / A Member of the Cushman & Wakefield Alliance