

# 360

## KINGSLAND

GREENPOINT, BROOKLYN

For Immediate Lease

± 17,000 SF Building on ± 98,250 SF Parcel

CAPITAL IMPROVEMENTS COMPLETE - READY FOR OCCUPANCY

SITEX  
GROUP

CUSHMAN &  
WAKEFIELD



# 360 KINGSLAND

Located in prime Greenpoint, Brooklyn, 360 Kingsland Avenue is an institutionally owned and managed low coverage industrial property with elite access to Manhattan, I-278, & I-495. The property has recently completed an extensive capital improvement program and is ready for immediate occupancy.

## SITE FEATURES

- ±17,000 SF Building
- ±4,000 SF Office
- +81,250 SF / 1.86 AC Excess Paved Land
- 18' 11" Clear
- 4 Dock Positions
- 7 Drive-Ins
- Heavy Power Available
- M3-1 Zoning
- Off Street Loading / Parking
- **G** Greenpoint Ave
- B24/B48 Bus Stops
- Immediate access to:
  - Queens-Midtown Tunnel
  - Brooklyn/Queens Expy.
  - Long Island Expy.

*ConEd has analyzed a power upgrade to support intensive electrical passenger and truck charging at the site, and is ready to perform the upgrade upon receipt of final plans*



## Recent UPGRADES

[Completed in 2024]



New  
Roof



New Asphalt  
Paving



New LED  
Lighting



New Roll-  
Up Doors



New  
Façade



New  
Concrete  
Floors



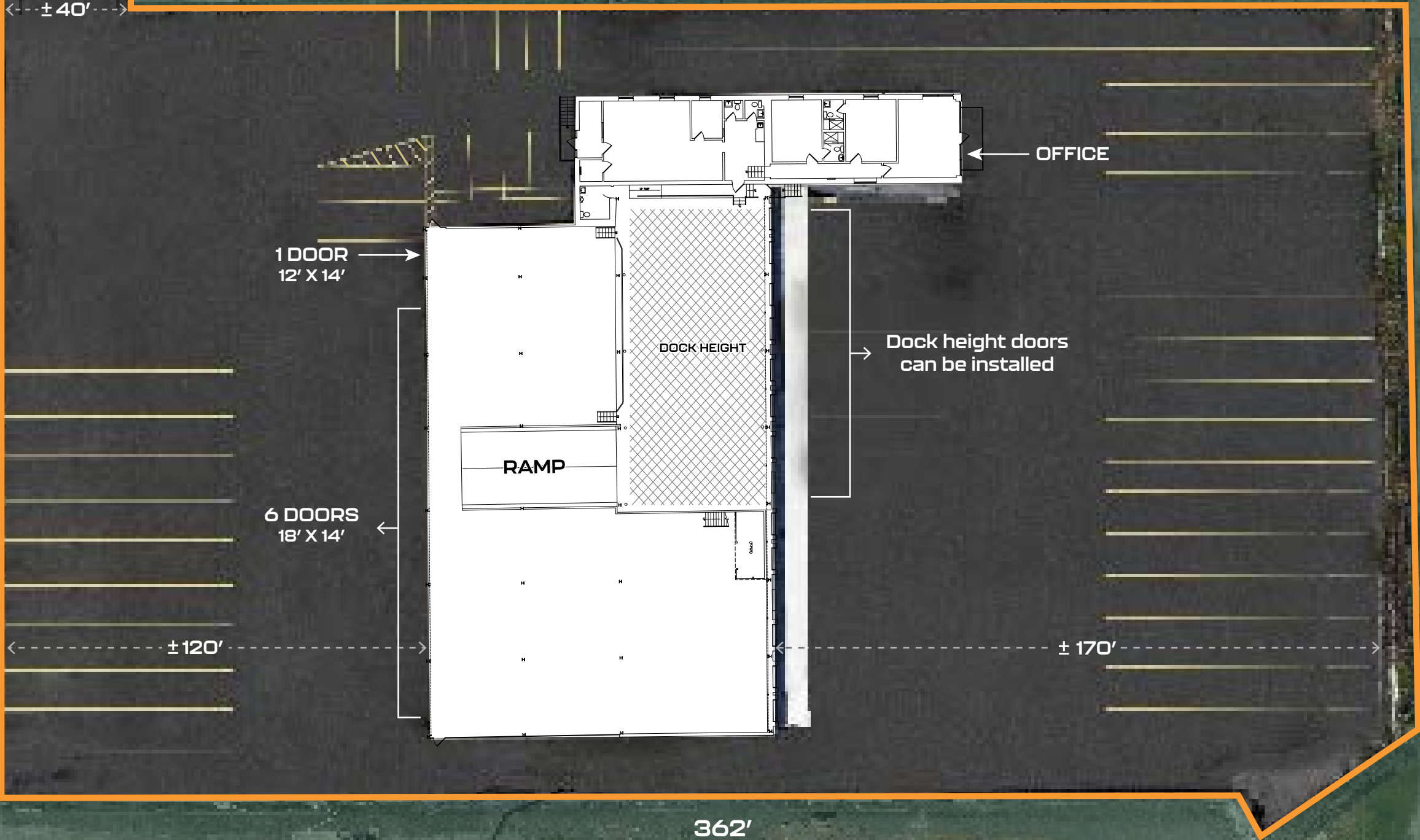
New Interior  
& Exterior  
Paint



Renovated  
Office

# SITE PLAN

360  
KINGSLAND





# DRIVE DISTANCES & CONNECTIVITY



## DRIVE DISTANCES

I-495	0.7 Mile	QUEENSBORO BRIDGE	2.5 Miles
I-278	1.0 Mile	MANHATTAN BRIDGE	4.5 Miles
MIDTOWN TUNNEL	2.0 Miles	RFK BRIDGE	6.3 Miles
WILLIAMSBURG BRIDGE	2.3 Miles		













# 360 KINGSLAND

GREENPOINT, BROOKLYN

## FOR MORE INFORMATION, PLEASE CONTACT:

### GURPREET "SONNY" SINGH

+1 718.275.5478

[sonny.singh@cushwake.com](mailto:sonny.singh@cushwake.com)

### RICO T. MURTHA

+1 212.390.1368

[rico.murtha@cushwake.com](mailto:rico.murtha@cushwake.com)

### HELEN M. PAUL

+1 212.841.7575

[helen.paul@cushwake.com](mailto:helen.paul@cushwake.com)



©2026 Cushman & Wakefield. All rights reserved. The information contained in this communication is strictly confidential. This information has been obtained from sources believed to be reliable but has not been verified. NO WARRANTY OR REPRESENTATION, EXPRESS OR IMPLIED, IS MADE AS TO THE CONDITION OF THE PROPERTY (OR PROPERTIES) REFERENCED HEREIN OR AS TO THE ACCURACY OR COMPLETENESS OF THE INFORMATION CONTAINED HEREIN, AND SAME IS SUBMITTED SUBJECT TO ERRORS, OMISSIONS, CHANGE OF PRICE, RENTAL OR OTHER CONDITIONS, WITHDRAWAL WITHOUT NOTICE, AND TO ANY SPECIAL LISTING CONDITIONS IMPOSED BY THE PROPERTY OWNER(S). ANY PROJECTIONS, OPINIONS OR ESTIMATES ARE SUBJECT TO UNCERTAINTY AND DO NOT SIGNIFY CURRENT OR FUTURE PROPERTY PERFORMANCE.