

FOR LEASE 2,264 SF

135 SOUTH TOUCHMARK WAY

MERIDIAN IDAHO 83642



PROPERTY FEATURES



STRATEGIC MERIDIAN LOCATION

Commercial space located at 135 S Touchmark Way within the City of Meridian, a growing and highly desirable business corridor.



AVAILABLE SUITE SIZE

Approximately 2,264 SF available within a 5,000 SF multi-tenant building.



ATTRACTIVE LEASE RATE

Offered at \$26.00/SF NNN with estimated operating expenses of \$5.00-\$7.00/SF.



GENEROUS TI ALLOWANCE

\$65.00 per square foot tenant improvement allowance available, allowing for a highly customized buildout.



PROFESSIONAL ZONING

Zoned City of Meridian L-O (Limited Office), well-suited for office and professional service users.



FLEXIBLE TERM STRUCTURE

5 to 10 year term considered.



BROKER FRIENDLY

6% commission, with 3% cooperation to procuring broker.



IDEAL FOR OWNER-USERS OR TENANTS

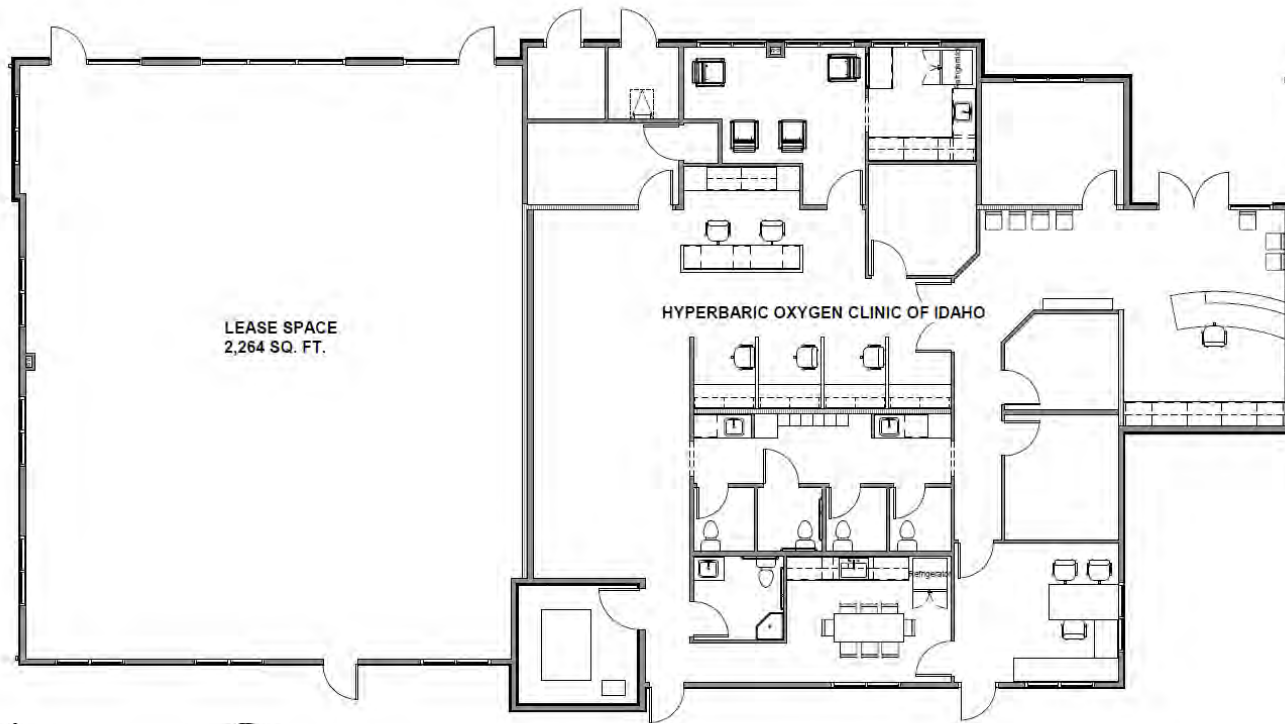
Strong opportunity for businesses seeking quality space in a well positioned Meridian submarket.



SPACE CAN BE SUBDIVIDED IF NEEDED

It has 2 electrical panels to accommodate.

FLOOR PLAN & SITE PLAN



AVAILABLE SPACE



2,264 SF

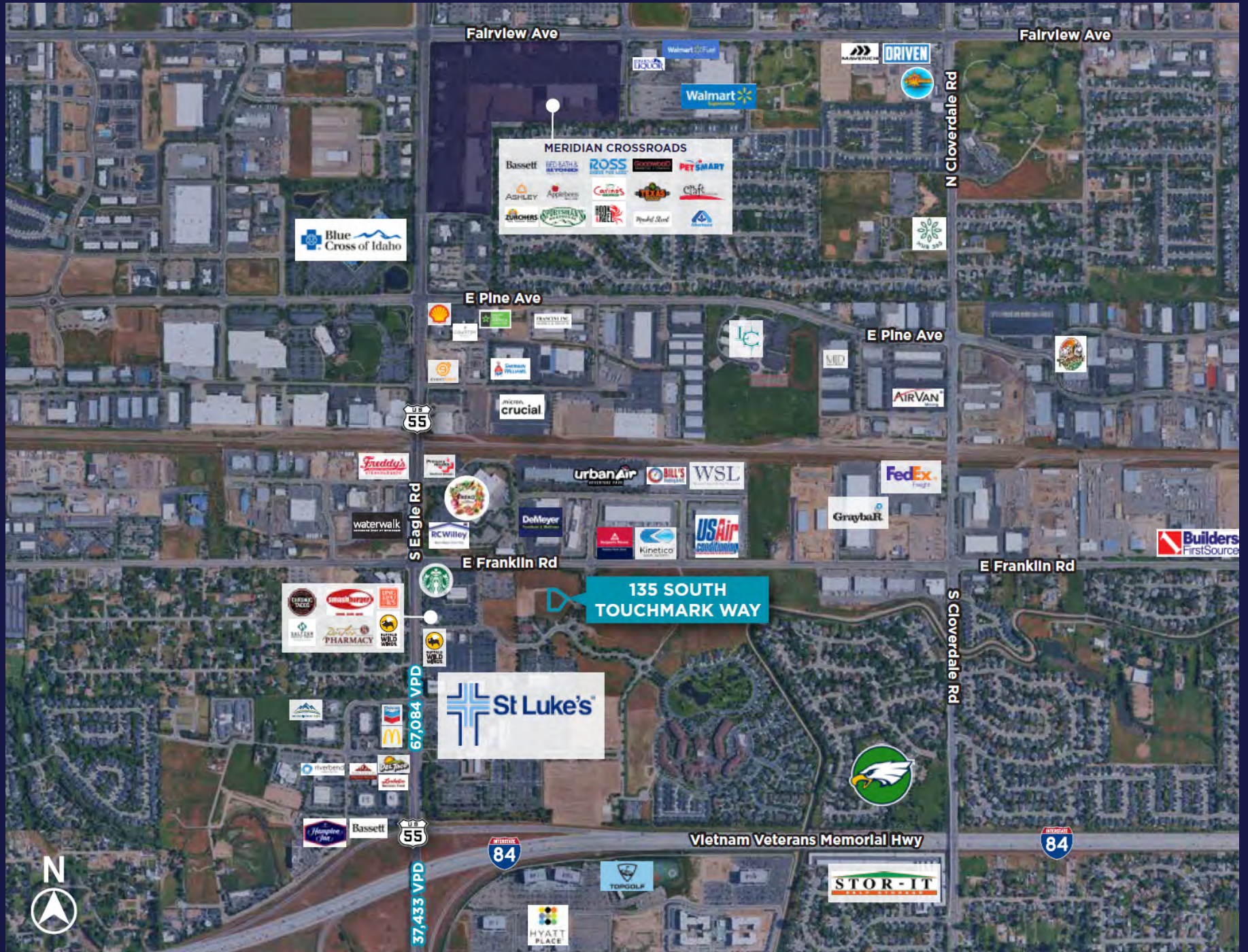
PHOTOS-EXTERIOR



PHOTOS-INTERIOR



MAP



MAP





CONTACT

STEVE VLASSEK
Director

Direct: +1 208 891 1021
steve.vlassek@cushwake.com

DAVE WINDER, CCIM
Director

Direct: +1 208 866 0610
dave.winder@cushwake.com

©2026 Cushman & Wakefield. All rights reserved. The information contained in this communication is strictly confidential. This information has been obtained from sources believed to be reliable but has not been verified. NO WARRANTY OR REPRESENTATION, EXPRESS OR IMPLIED, IS MADE AS TO THE CONDITION OF THE PROPERTY (OR PROPERTIES) REFERENCED HEREIN OR AS TO THE ACCURACY OR COMPLETENESS OF THE INFORMATION CONTAINED HEREIN, AND SAME IS SUBMITTED SUBJECT TO ERRORS, OMISSIONS, CHANGE OF PRICE, RENTAL OR OTHER CONDITIONS, WITHDRAWAL WITHOUT NOTICE, AND TO ANY SPECIAL LISTING CONDITIONS IMPOSED BY THE PROPERTY OWNER(S). ANY PROJECTIONS, OPINIONS OR ESTIMATES ARE SUBJECT TO UNCERTAINTY AND DO NOT SIGNIFY CURRENT OR FUTURE PROPERTY PERFORMANCE.