

FLEX/INDUSTRIAL SUITES FOR LEASE MIRAMAR, SAN DIEGO, CALIFORNIA 92121

# CENTERPOINTE COMMERCE PARK



RYAN DOWNING, SIOR  
858.546.5416  
ryan.downing@cushwake.com  
CA LIC. 01955032

TRINITY CARSON  
619.928.6034  
trinity.carson@cushwake.com  
CA LIC. 02343245

BRANT ABERG, SIOR  
858.546.5464  
brant.aberg@cushwake.com  
CA LIC. 01773573

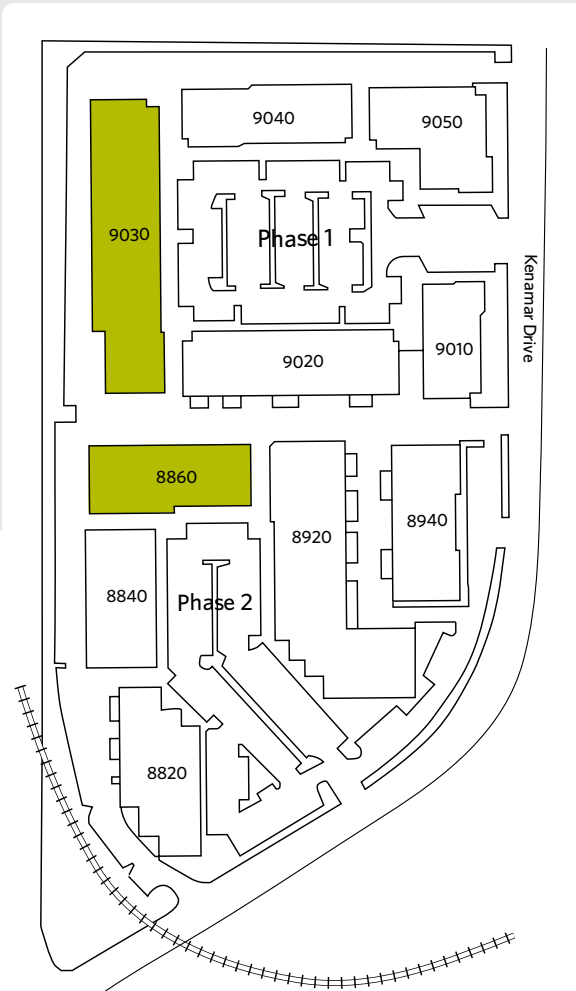


 CUSHMAN & WAKEFIELD

Cushman & Wakefield  
12830 El Camino Real  
Suite 100  
San Diego, CA 92130  
[www.cushmanwakefield.com](http://www.cushmanwakefield.com)

# FLEX/INDUSTRIAL SUITES FOR LEASE MIRAMAR, SAN DIEGO, CALIFORNIA 92121

# CENTERPOINTE COMMERCE PARK



## PROPERTY FEATURES

- A 197,626 SF Multi-Tenant Industrial Park
- Approximately 18' Warehouse Clearance
- Natural Gas in the Project
- Skylights
- 3.1/1,000 parking ratio
- 1 block off Miramar Road behind Pyramid
- High Image Business Park
- Deli on-site

## AVAILABLE SPACE

ADDRESS	SUITE	SIZE	RENT	AVAILABLE
8860 Kenamar Dr.	301-302	3,337 SF	\$1.65 NNN per SF/Month	Available Now
9030 Kenmar Dr.	302	1,680 SF	\$1.70 NNN per SF/Month	Available Now
9030 Kenamar Dr.	315	1,680 SF	\$1.70 NNN per SF/Month	Available 3/1/2026



**RYAN DOWNING, SIOR**  
 858.546.5416  
[ryan.downing@cushwake.com](mailto:ryan.downing@cushwake.com)  
 CA LIC. 01955032

**TRINITY CARSON**  
 619.928.6034  
[trinity.carson@cushwake.com](mailto:trinity.carson@cushwake.com)  
 CA LIC. 02343245

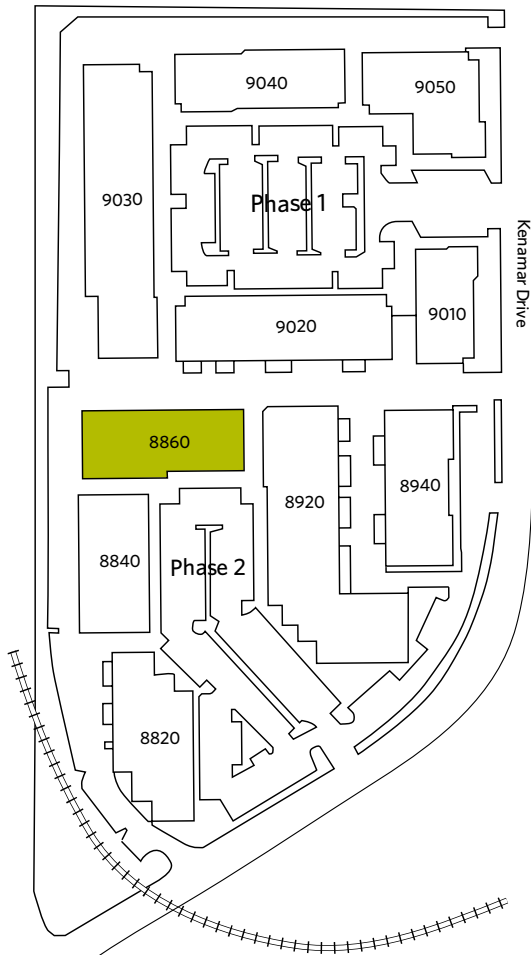
**BRANT ABERG, SIOR**  
 858.546.5464  
[brant.aberg@cushwake.com](mailto:brant.aberg@cushwake.com)  
 CA LIC. 01773573

Cushman & Wakefield  
 12830 El Camino Real  
 Suite 100  
 San Diego, CA 92130  
[www.cushmanwakefield.com](http://www.cushmanwakefield.com)

# FLEX/INDUSTRIAL SUITES FOR LEASE MIRAMAR, SAN DIEGO, CALIFORNIA 92121

# CENTERPOINTE

# COMMERCE PARK

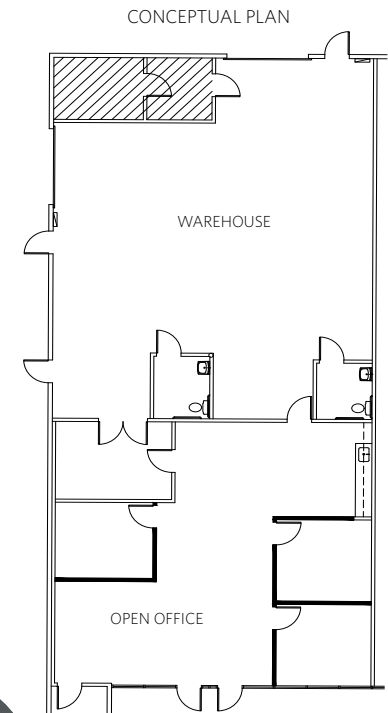
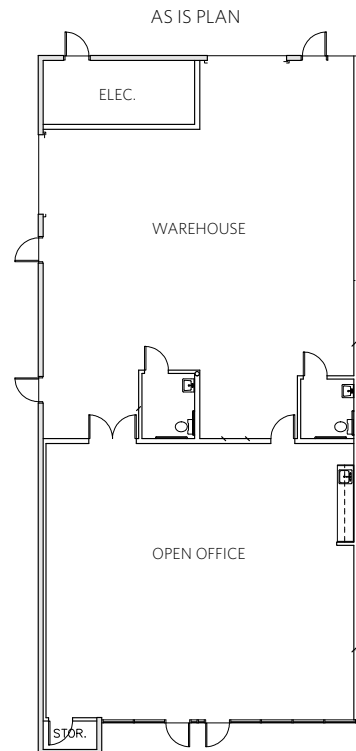


## AVAILABLE SPACE

ADDRESS	SUITE	SIZE	RENT	AVAILABLE
8860 Kenamar Drive	301-302	3,337 SF	\$1.65 NNN per SF/Month	Available Now

### COMMENTS

Reception/ open office area, electricity room, (2) restrooms, balance warehouse. (2) grade level doors. Make ready work completed. Suite is in move in ready condition. NNN's = \$0.41.



**RYAN DOWNING, SIOR**  
858.546.5416  
ryan.downing@cushwake.com  
CA LIC. 01955032

**TRINITY CARSON**  
619.928.6034  
trinity.carson@cushwake.com  
CA LIC. 02343245

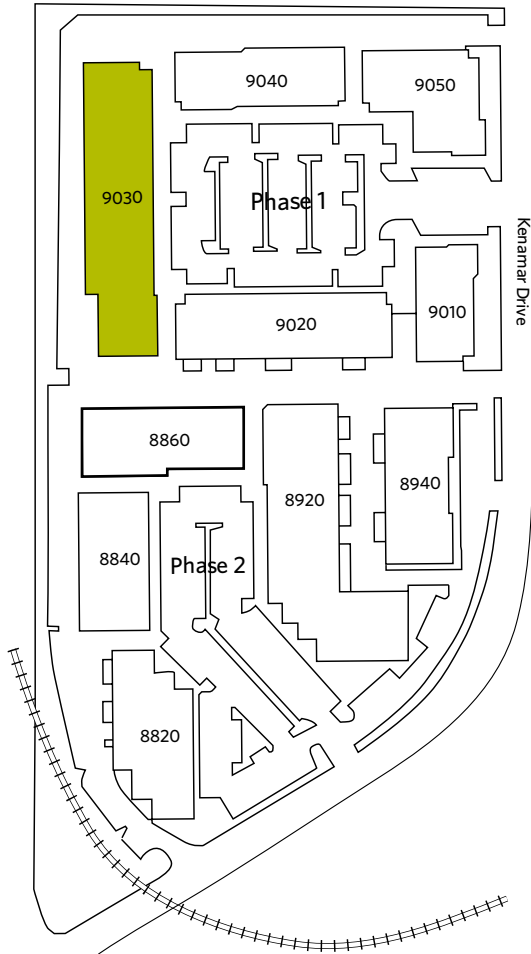
**BRANT ABERG, SIOR**  
858.546.5464  
brant.aberg@cushwake.com  
CA LIC. 01773573

Cushman & Wakefield  
12830 El Camino Real  
Suite 100  
San Diego, CA 92130  
www.cushmanwakefield.com

# FLEX/INDUSTRIAL SUITES FOR LEASE MIRAMAR, SAN DIEGO, CALIFORNIA 92121

# CENTERPOINTE

# COMMERCE PARK

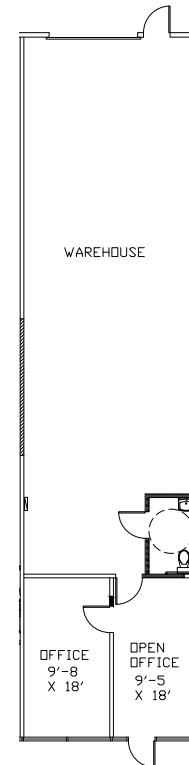


## AVAILABLE SPACE

ADDRESS	SUITE	SIZE	RENT	AVAILABLE
9030 Kenamar Drive	302	1,680 SF	\$1.70 NNN per SF/Month	Available Now

### COMMENTS

Reception/open office, (1) private office, (1) restroom, balance warehouse. (1) grade level door. Make ready work completed. Suite is in move in ready condition. NNN's = \$0.41.



**RYAN DOWNING, SIOR**  
858.546.5416  
ryan.downing@cushwake.com  
CA LIC. 01955032

**TRINITY CARSON**  
619.928.6034  
trinity.carson@cushwake.com  
CA LIC. 02343245

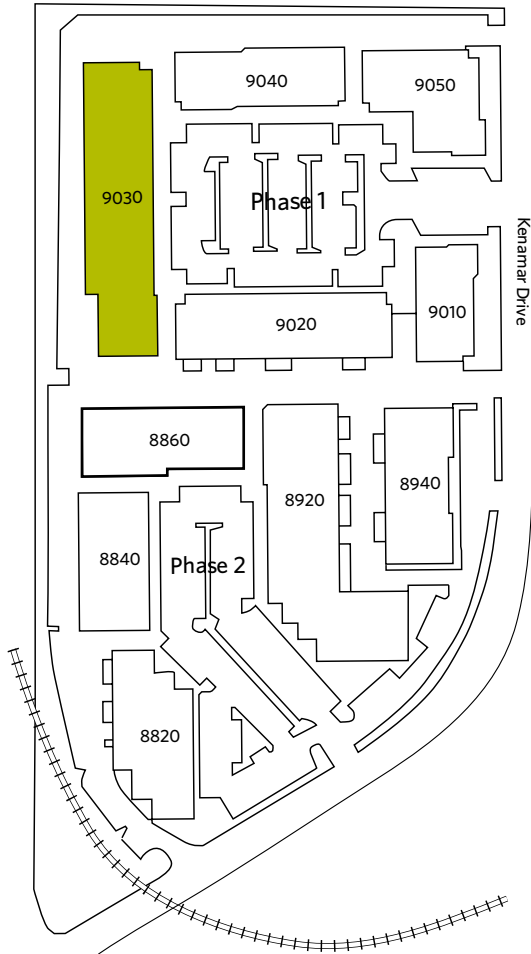
**BRANT ABERG, SIOR**  
858.546.5464  
brant.aberg@cushwake.com  
CA LIC. 01773573

Cushman & Wakefield  
12830 El Camino Real  
Suite 100  
San Diego, CA 92130  
www.cushmanwakefield.com

# FLEX/INDUSTRIAL SUITES FOR LEASE MIRAMAR, SAN DIEGO, CALIFORNIA 92121

# CENTERPOINTE

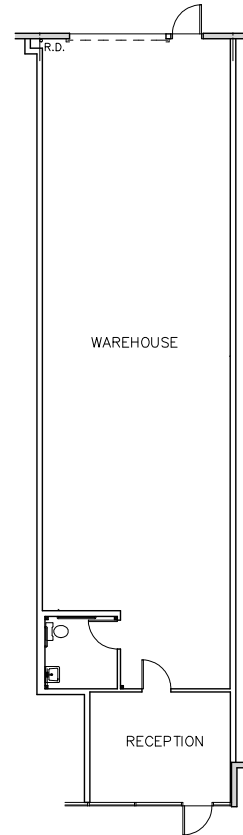
# COMMERCE PARK



## AVAILABLE SPACE

ADDRESS	SUITE	SIZE	RENT	AVAILABLE
9030 Kenamar Drive	315	1,680 SF	\$1.70 NNN per SF/Month	Available 3/1/2026
COMMENTS				

Reception/open office, (1) restroom, balance warehouse. (1) grade level door. NNN's = \$0.41.



**RYAN DOWNING, SIOR**  
 858.546.5416  
[ryan.downing@cushwake.com](mailto:ryan.downing@cushwake.com)  
 CA LIC. 01955032

**TRINITY CARSON**  
 619.928.6034  
[trinity.carson@cushwake.com](mailto:trinity.carson@cushwake.com)  
 CA LIC. 02343245

**BRANT ABERG, SIOR**  
 858.546.5464  
[brant.aberg@cushwake.com](mailto:brant.aberg@cushwake.com)  
 CA LIC. 01773573

Cushman & Wakefield  
 12830 El Camino Real  
 Suite 100  
 San Diego, CA 92130  
[www.cushmanwakefield.com](http://www.cushmanwakefield.com)

# FLEX/INDUSTRIAL SUITES FOR LEASE MIRAMAR, SAN DIEGO, CALIFORNIA 92121

## CENTERPOINTE COMMERCE PARK



©Cushman & Wakefield. All rights reserved. This information has been obtained from sources believed to be reliable but has not been verified. NO WARRANTY OR REPRESENTATION, EXPRESS OR IMPLIED, IS MADE AS TO THE CONDITION OF THE PROPERTY (OR PROPERTIES) REFERENCED HEREIN OR AS TO THE ACCURACY OR COMPLETENESS OF THE INFORMATION CONTAINED HEREIN, AND SAME IS SUBMITTED SUBJECT TO ERRORS, OMISSIONS, CHANGE OF PRICE, RENTAL OR OTHER CONDITIONS, WITHDRAWAL WITHOUT NOTICE, AND TO ANY SPECIAL LISTING CONDITIONS IMPOSED BY THE PROPERTY OWNER(S).

RYAN DOWNING, SIOR  
858.546.5416  
ryan.downing@cushwake.com  
CA LIC. 01955032

TRINITY CARSON  
619.928.6034  
trinity.carson@cushwake.com  
CA LIC. 02343245

BRANT ABERG, SIOR  
858.546.5464  
brant.aberg@cushwake.com  
CA LIC. 01773573



Cushman & Wakefield  
12830 El Camino Real  
Suite 100  
San Diego, CA 92130  
www.cushmanwakefield.com