



FOR LEASE

13,154 RSF

Owyhee Park Plaza

3501 W. Elder Street, Boise, Idaho 83705

PROPERTY HIGHLIGHTS

Space Available Ste. 200 - 13,154 SF

Lease Rate \$16.50 - \$20.00/PSF FSEJ

Building Class Class A

Building Size 51,264 SF Total

Proposed Plan Space #1 - 4,227 SF - \$20.00/PSF
Space #2 - 4,580 SF - \$20.00/PSF
Space #3 - 4,268 SF - \$20.00/PSF

Land Area 2.902 Acres

Parking Ample - On-Site

Showings By Appointment Only, Contact Agents to Schedule City-of-Boise

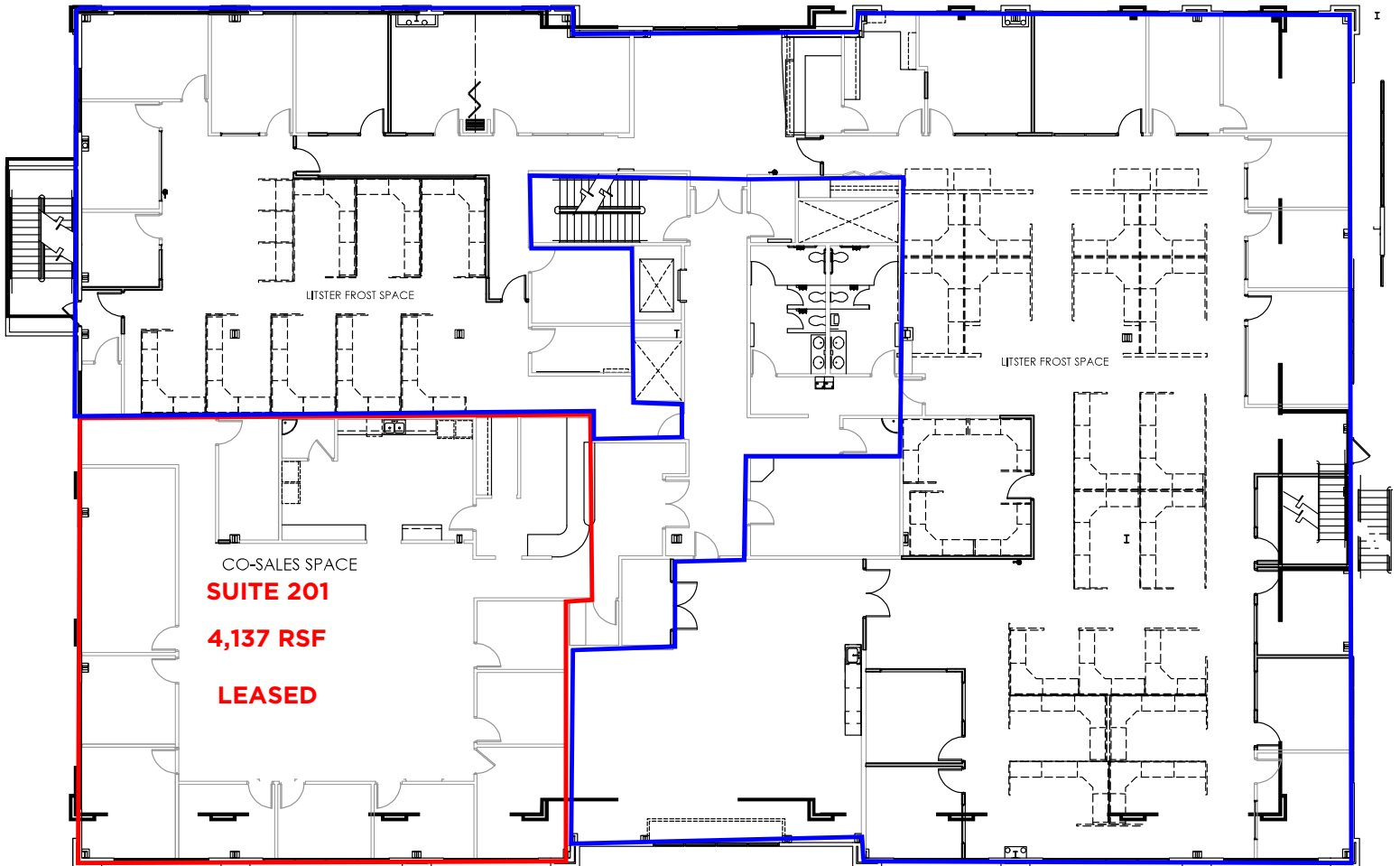
Zoning L-OD



FLOOR PLAN

SUITE 200 - FOR LEASE

Suite 200
13,154 RSF
\$16.50/SF FSEJ

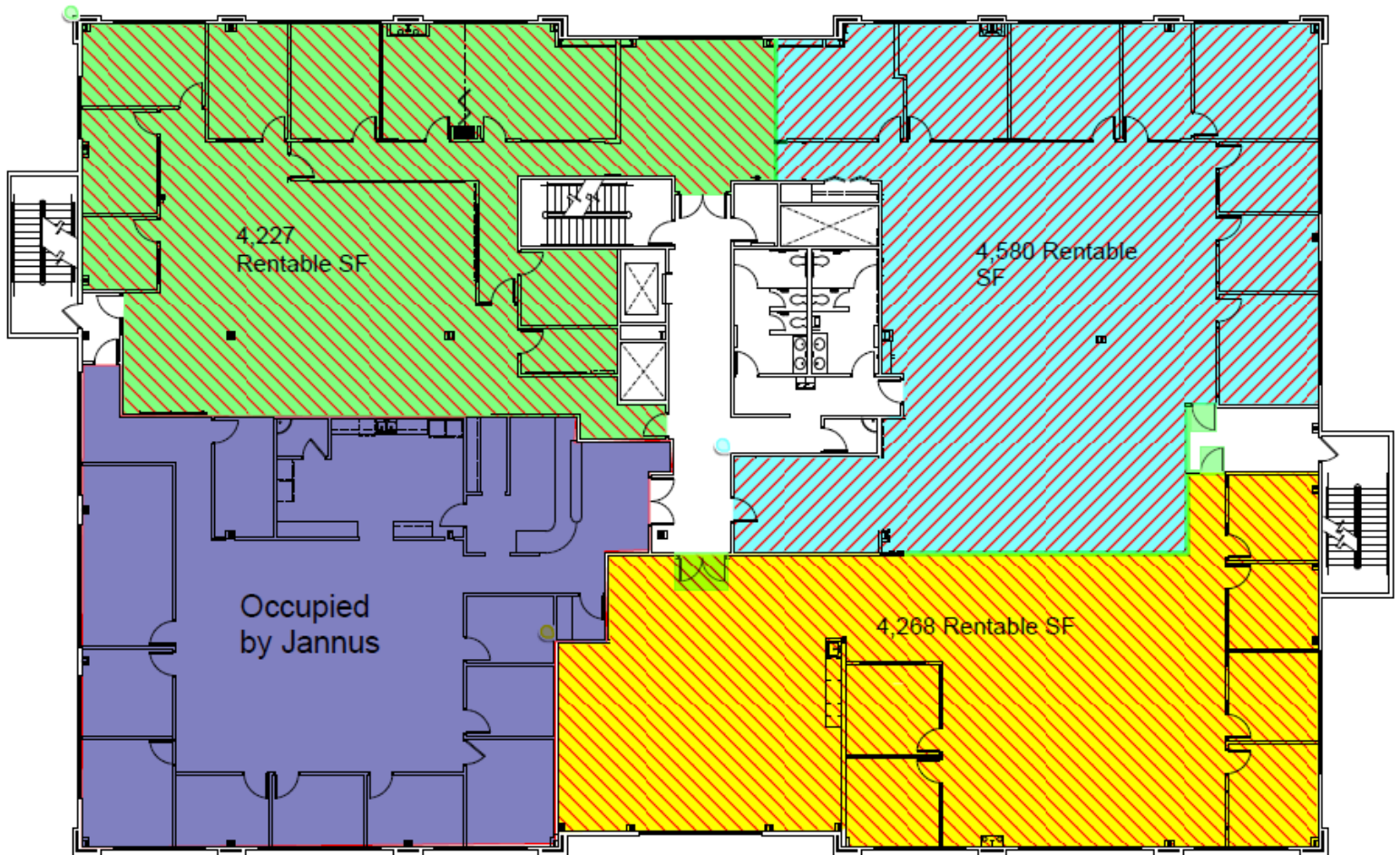


PROPOSED FLOOR PLAN

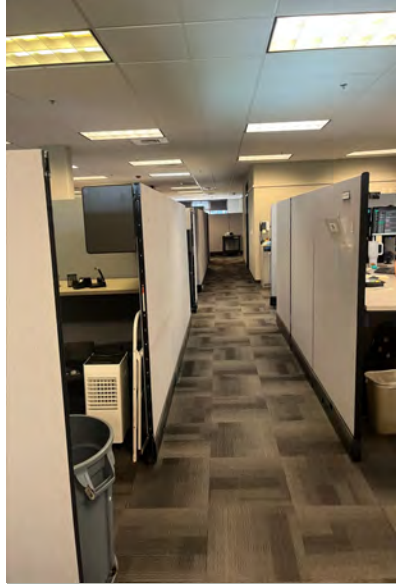
Space #1 - 4,227 SF - \$20.00/PSF

Space #2 - 4,580 SF - \$20.00/PSF

Space #3 - 4,268 SF - \$20.00/PSF



PROPERTY PHOTOS



AERIAL MAP

EASY ACCESS TO VISTA INTERCHANGE
I-84 EXIT 53





CONTACT

JENNIFER MCENTEE

Senior Director
Office | Capital Markets
+1 208 287 9495
jennifer.mcentee@cushwake.com

BREE WELLS

Director
Office | Capital Markets
+1 208 287 9492
bree.wells@cushwake.com

BRAYDON TORRES

Associate
Office | Capital Markets
+1 208 207 9485
braydon.torres@cushwake.com

999 West Main Street, Ste 1300
Boise, Idaho 83702
Main +1 208 287 9500
Fax +1 208 287 9501
cushmanwakefield.com

©2025 Cushman & Wakefield. All rights reserved. The information contained in this communication is strictly confidential. This information has been obtained from sources believed to be reliable but has not been verified. NO WARRANTY OR REPRESENTATION, EXPRESS OR IMPLIED, IS MADE AS TO THE CONDITION OF THE PROPERTY (OR PROPERTIES) REFERENCED HEREIN OR AS TO THE ACCURACY OR COMPLETENESS OF THE INFORMATION CONTAINED HEREIN, AND SAME IS SUBMITTED SUBJECT TO ERRORS, OMISSIONS, CHANGE OF PRICE, RENTAL OR OTHER CONDITIONS, WITHDRAWAL WITHOUT NOTICE, AND TO ANY SPECIAL LISTING CONDITIONS IMPOSED BY THE PROPERTY OWNER(S). ANY PROJECTIONS, OPINIONS OR ESTIMATES ARE SUBJECT TO UNCERTAINTY AND DO NOT SIGNIFY CURRENT OR FUTURE PROPERTY PERFORMANCE.

