



**FOR LEASE**

13,154 RSF

# Owyhee Park Plaza

3501 W. Elder Street, Boise, Idaho 83705

# PROPERTY HIGHLIGHTS

**Space Available** Ste. 201 - 13,154 SF

**Lease Rate** \$16.50/SF FSEJ

**Building Class** Class A

**Building Size** 51,264 SF Total

**Availability** Ste. 201 - Immediately

**Sublease Term** November 30, 2034

**Land Area** 2.902 Acres

**Parking** Ample - On-Site

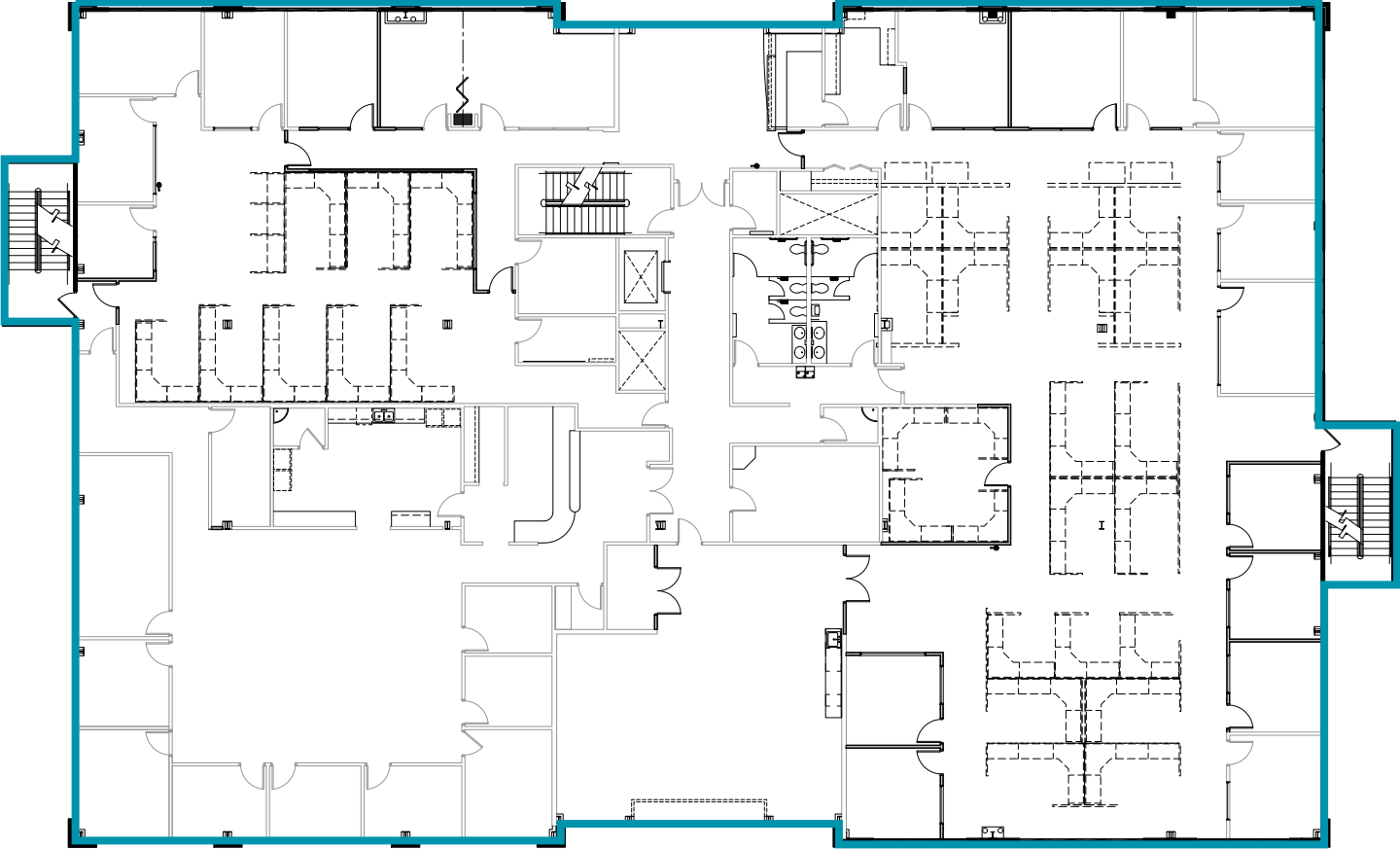
**Showings** By Appointment Only,  
Contact Agents to Schedule

**Zoning** City-of-Boise L-OD



# FLOOR PLAN

SUITE 201 - FOR LEASE



**Suite 201**  
**13,154 RSF**  
**\$16.50/SF FSEJ**



# PROPERTY PHOTOS



# PROPERTY PHOTOS



# AERIAL MAP

EASY ACCESS TO VISTA INTERCHANGE  
I-84 EXIT 53

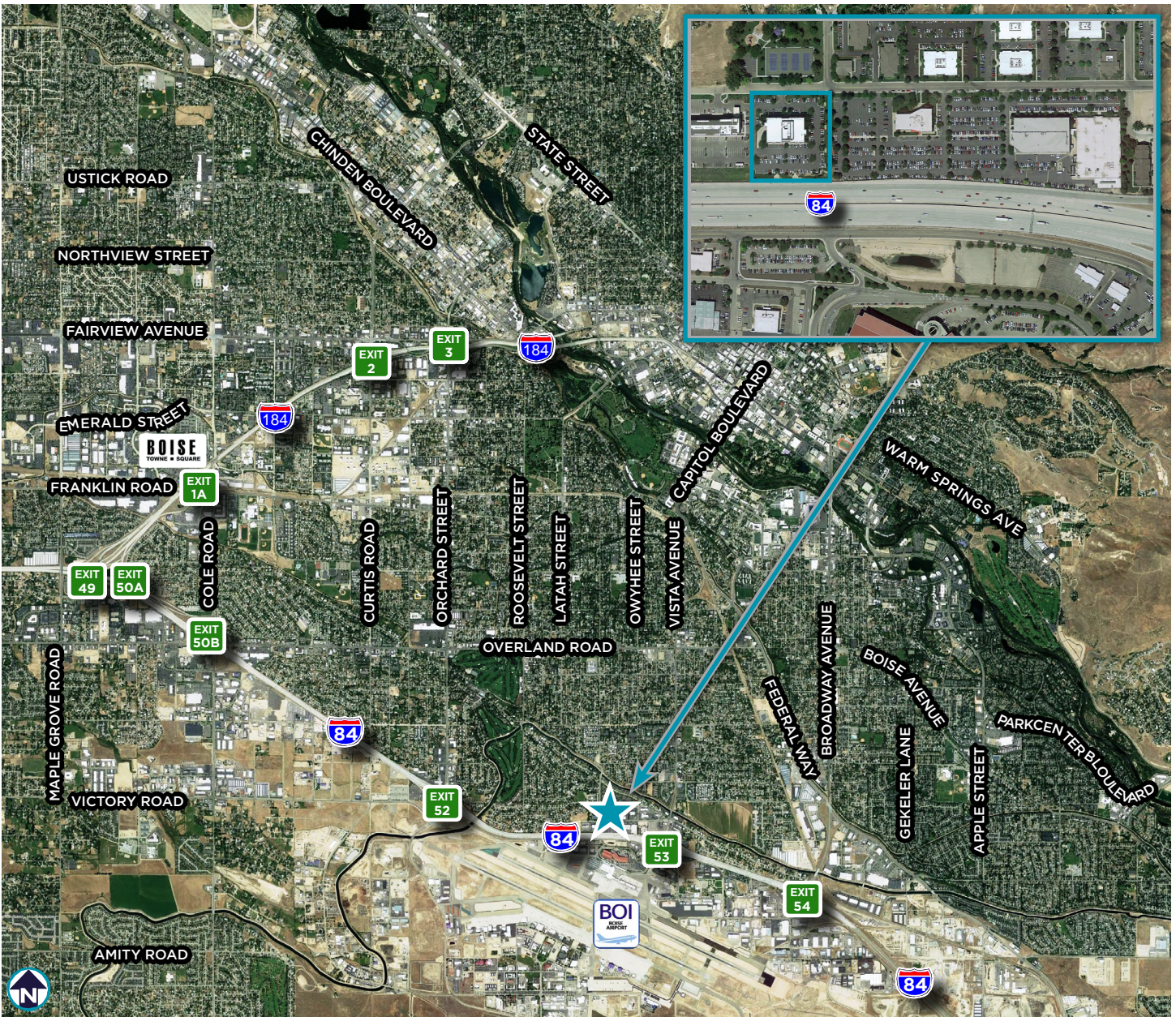


# AERIAL MAP

MINUTES FROM DOWNTOWN AND THE SURROUNDING AREAS



[Google Earth 360 View - Click Here to View](#)





## CONTACT

### JENNIFER MCENTEE

Senior Director  
Office | Capital Markets  
+1 208 287 9495  
jennifer.mcentee@cushwake.com

### BREE WELLS

Director  
Office | Capital Markets  
+1 208 287 9492  
bree.wells@cushwake.com

### BRAYDON TORRES

Associate  
Office | Capital Markets  
+1 208 207 9485  
braydon.torres@cushwake.com

999 West Main Street, Ste 1300  
Boise, Idaho 83702  
Main +1 208 287 9500  
Fax +1 208 287 9501  
**cushmanwakefield.com**

©2025 Cushman & Wakefield. All rights reserved. The information contained in this communication is strictly confidential. This information has been obtained from sources believed to be reliable but has not been verified. NO WARRANTY OR REPRESENTATION, EXPRESS OR IMPLIED, IS MADE AS TO THE CONDITION OF THE PROPERTY (OR PROPERTIES) REFERENCED HEREIN OR AS TO THE ACCURACY OR COMPLETENESS OF THE INFORMATION CONTAINED HEREIN, AND SAME IS SUBMITTED SUBJECT TO ERRORS, OMISSIONS, CHANGE OF PRICE, RENTAL OR OTHER CONDITIONS, WITHDRAWAL WITHOUT NOTICE, AND TO ANY SPECIAL LISTING CONDITIONS IMPOSED BY THE PROPERTY OWNER(S). ANY PROJECTIONS, OPINIONS OR ESTIMATES ARE SUBJECT TO UNCERTAINTY AND DO NOT SIGNIFY CURRENT OR FUTURE PROPERTY PERFORMANCE.

