



**FOR LEASE**

**825 FRENETTE AVE**

MONCTON, NB | 10,000 SF



# PROPERTY HIGHLIGHTS

10,000 SF  
**BUILDING SIZE**

NB133101  
**MLS**

\$15.50 PSF NET  
**LEASE RATE**

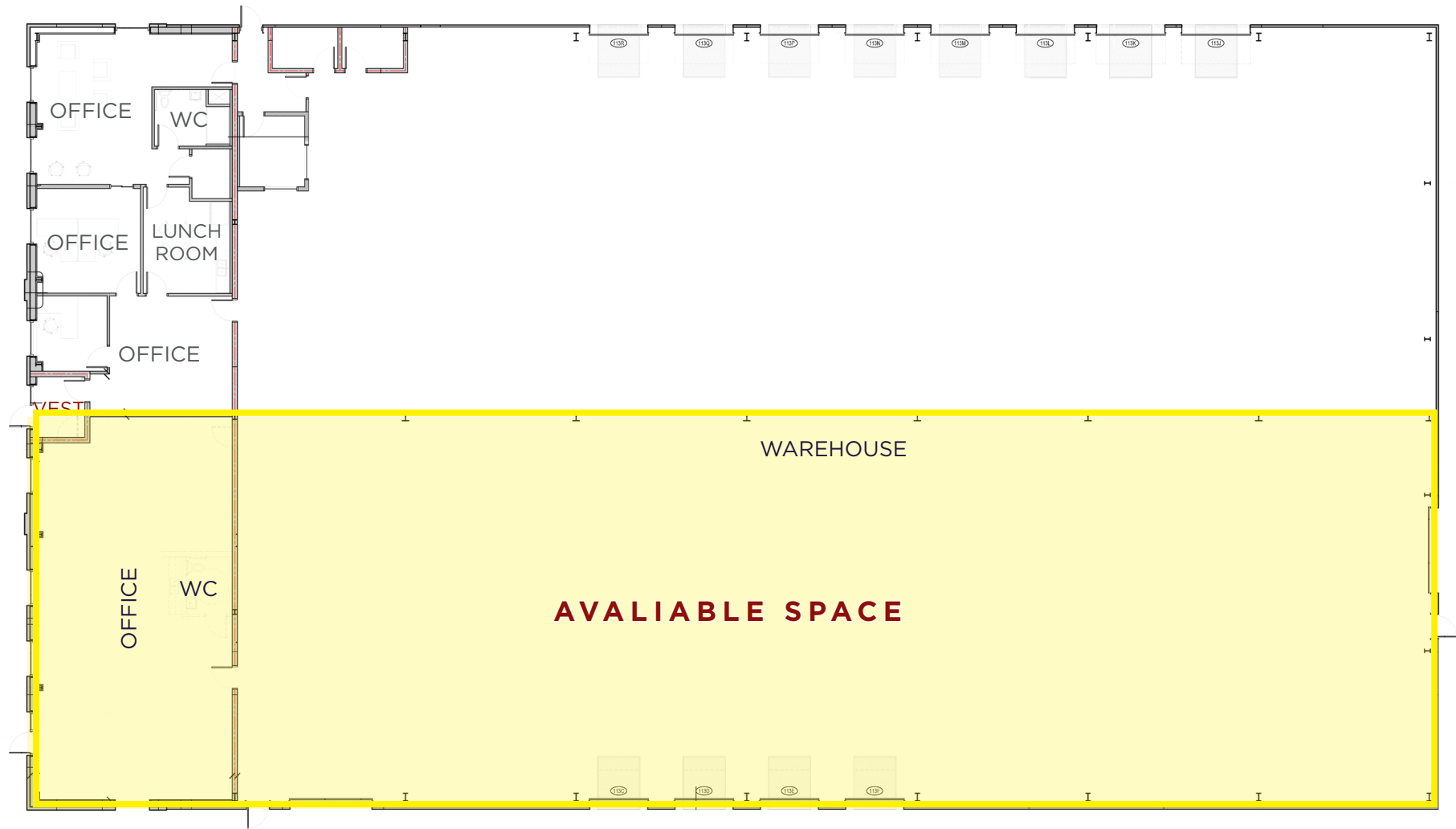
825 Frenette Avenue is a newly constructed warehouse building that offers a +/- 10,000 sf of modern industrial space. This building is ready for immediate occupancy and is designed to support efficient operations, making it an excellent option for warehousing, distribution, or light industrial uses.

Featuring a clean, contemporary design and a functional layout, this property provides the flexibility needed to accommodate various business needs while promoting operational efficiency.

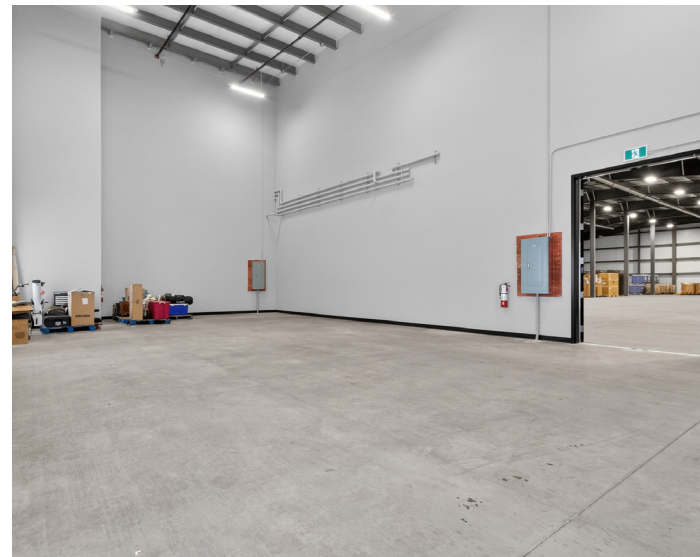
- **Newly constructed** warehouse.
- Ready for **immediate move-in**.
- **Modern design and layout** specifically optimized for industrial and distribution users.
- **Four (4) dock & two (2) grade** loading doors
- Interior space designed to be **flexible and adaptable**.
- Located in the **Caledonia Industrial Park** of Moncton.
- Efficient access to major transportation routes



# FLOOR PLAN



# PHOTO GALLERY





# LOCATION MAP



The property offers excellent connectivity, providing quick access to **Wheeler Boulevard** and the **Trans-Canada Highway**. This strategic location facilitates the efficient movement of goods throughout Greater Moncton and across Atlantic Canada.

The **Caledonia Industrial Park** is a well-established industrial area, home to a variety of logistics, service, and industrial businesses.

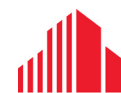
**ADAM MAGEE**

Managing Director NB/NL  
+1 506 872 2507  
amagee@cwatlantic.com

**SUZIE TAYLOR**

Commercial Real Estate Advisor  
+1 506 380 1777  
staylor@cwatlantic.com

©2026 Cushman & Wakefield. All rights reserved. The information contained in this communication is strictly confidential. This information has been obtained from sources believed to be reliable but has not been verified. NO WARRANTY OR REPRESENTATION, EXPRESS OR IMPLIED, IS MADE AS TO THE CONDITION OF THE PROPERTY (OR PROPERTIES) REFERENCED HEREIN OR AS TO THE ACCURACY OR COMPLETENESS OF THE INFORMATION CONTAINED HEREIN, AND SAME IS SUBMITTED SUBJECT TO ERRORS, OMISSIONS, CHANGE OF PRICE, RENTAL OR OTHER CONDITIONS, WITHDRAWAL WITHOUT NOTICE, AND TO ANY SPECIAL LISTING CONDITIONS IMPOSED BY THE PROPERTY OWNER(S). ANY PROJECTIONS, OPINIONS OR ESTIMATES ARE SUBJECT TO UNCERTAINTY AND DO NOT SIGNIFY CURRENT OR FUTURE PROPERTY PERFORMANCE.



**CUSHMAN &  
WAKEFIELD**  
Atlantic