



# 11623 Arbor Street

OMAHA, NE 68144

4,400 SF AVAILABLE

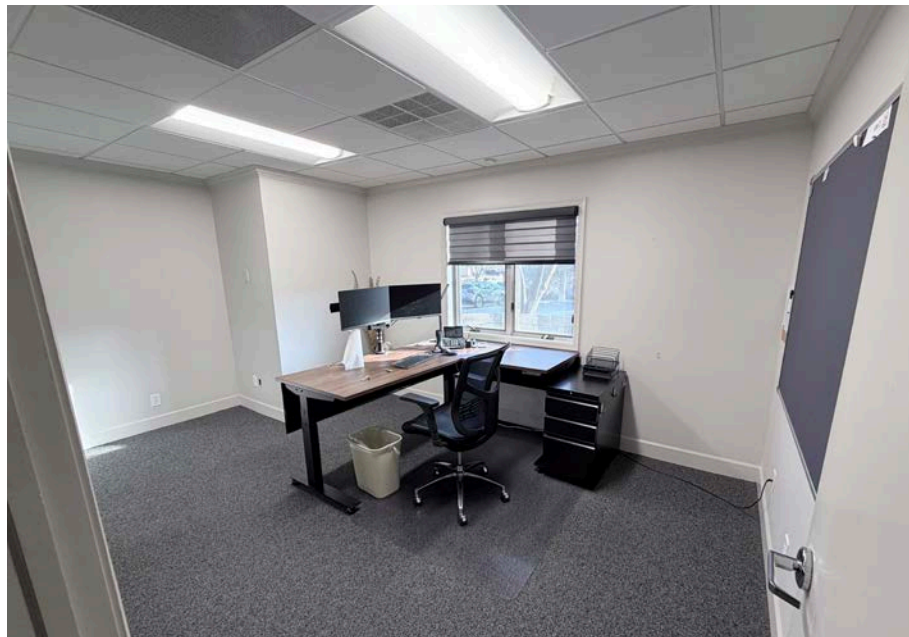




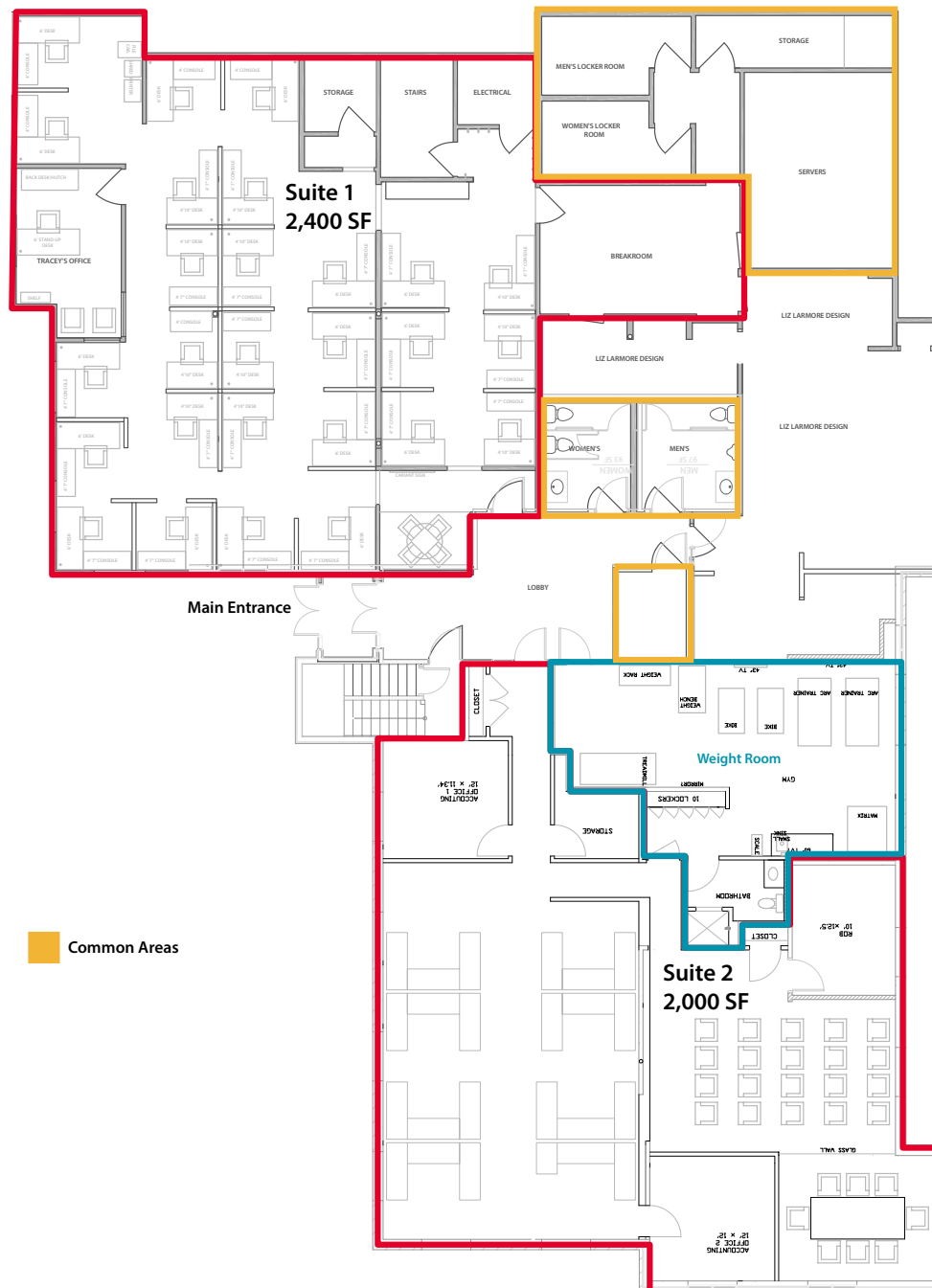
# Property Highlights

Two suites available with furniture in place. Building offers a common gym/locker room included in the rent. Located along Arbor Street with convenient access to 120th Street, 114th Street, West Center, and I-680.

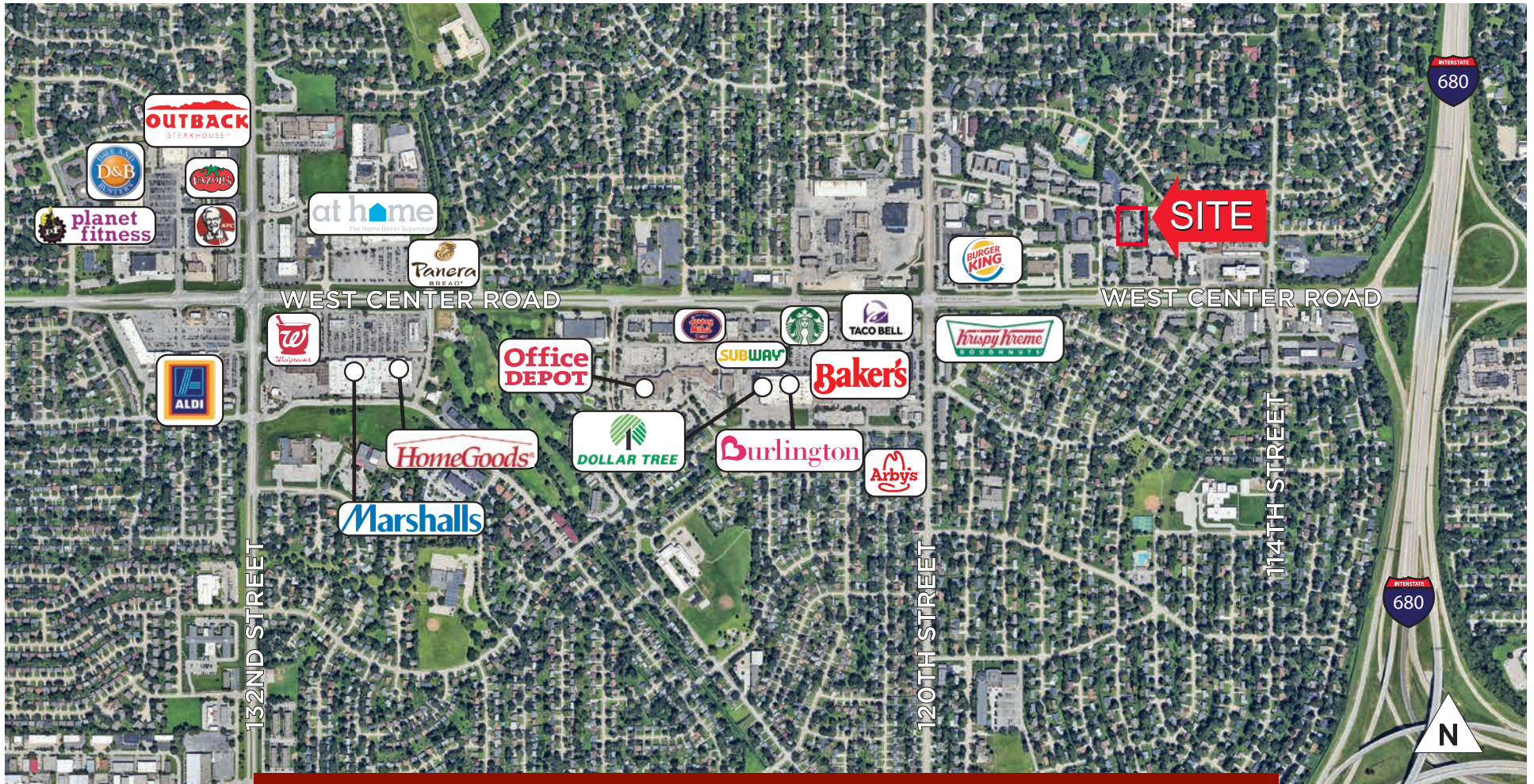
<b>Rental Rate</b>	\$19.50 PSF FS
<b>Building Size</b>	16,418 SF
<b>Spaces Available</b>	2
<b>Available Space</b>	4,400 SF
<b>Suite 1</b>	2,400 SF
<b>Suite 2</b>	2,000 SF
<b>Site Area</b>	.90 acres
<b>Zoning</b>	LO
<b>Parking</b>	4:1,000



# Floor Plan







# Aerial Map



# 11623 Arbor Street



**Spencer Secor, CCIM**  
**Senior Associate**  
spencer.secor@lundco.com  
+1 402 548 4069

450 Regency Parkway  
Suite 200  
Omaha, NE 68114  
**lundco.com**



*Independently Owned and Operated / A Member of the Cushman & Wakefield Alliance*

©2026 Cushman & Wakefield. All rights reserved. The information contained in this communication is strictly confidential. This information has been obtained from sources believed to be reliable but has not been verified. NO WARRANTY OR REPRESENTATION, EXPRESS OR IMPLIED, IS MADE AS TO THE CONDITION OF THE PROPERTY (OR PROPERTIES) REFERENCED HEREIN OR AS TO THE ACCURACY OR COMPLETENESS OF THE INFORMATION CONTAINED HEREIN, AND SAME IS SUBMITTED SUBJECT TO ERRORS, OMISSIONS, CHANGE OF PRICE, RENTAL OR OTHER CONDITIONS, WITHDRAWAL WITHOUT NOTICE, AND TO ANY SPECIAL LISTING CONDITIONS IMPOSED BY THE PROPERTY OWNER(S). ANY PROJECTIONS, OPINIONS OR ESTIMATES ARE SUBJECT TO UNCERTAINTY AND DO NOT SIGNIFY CURRENT OR FUTURE PROPERTY PERFORMANCE.