

RETAIL SPACE FOR LEASE

545 THIRD AVENUE

MURRAY HILL
NORTHEAST CORNER OF EAST 36TH STREET



CUSHMAN &
WAKEFIELD

545 THIRD AVENUE

MURRAY HILL

NORTHEAST CORNER OF EAST 36TH STREET

AVAILABILITY OVERVIEW:

GROUND FLOOR: 8,400 SF
LOWER LEVEL: 3,714 SF
TOTAL: 12,114 SF

POSSESSION:

- IMMEDIATE

TERM:

- NEGOTIABLE

LEASE TYPE:

- DIRECT

ASKING RENT:

- UPON REQUEST

FRONTAGE:

- 90 FEET ON THIRD AVE

CEILING HEIGHTS:

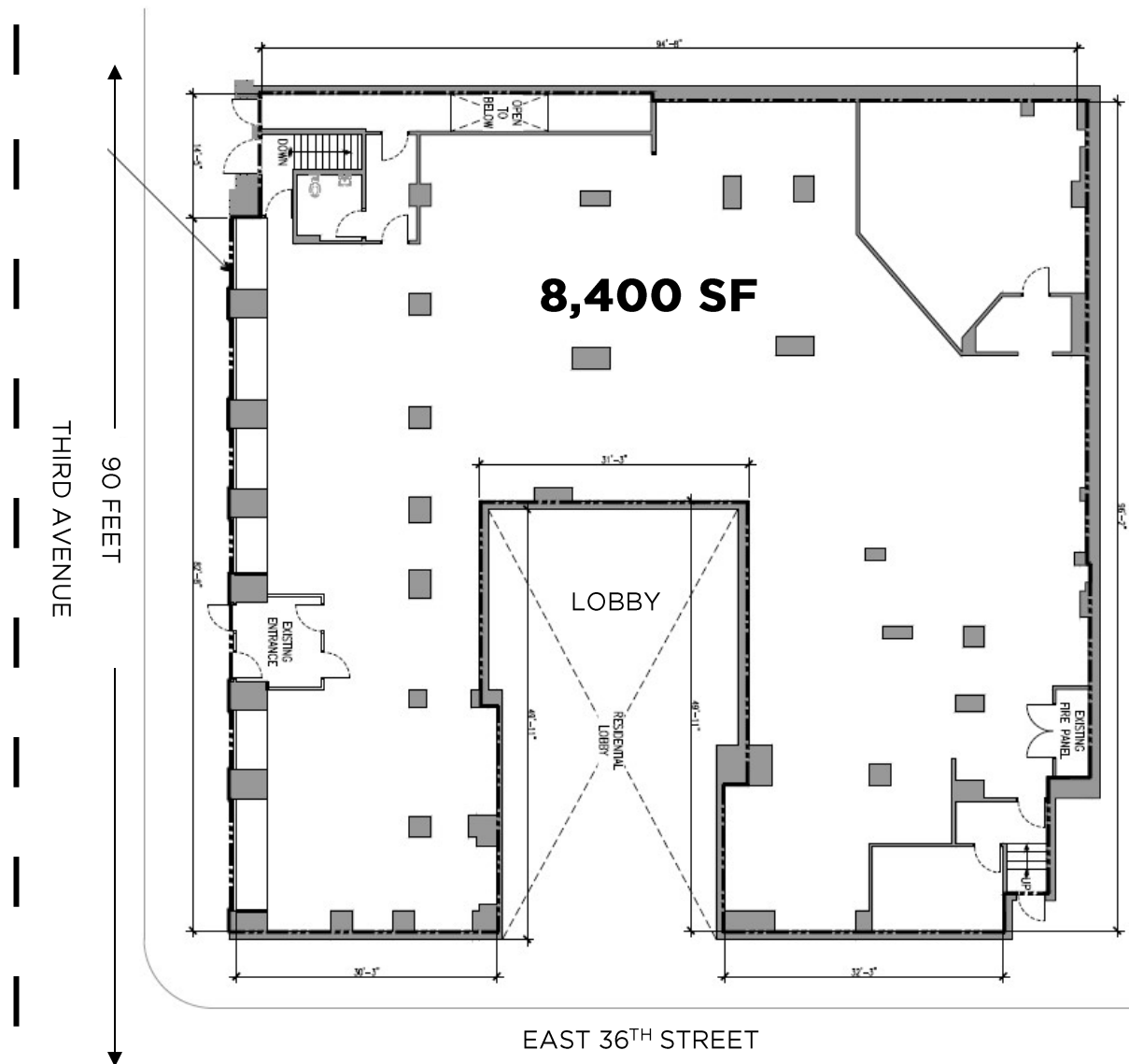
- GROUND: APPROX. 10 FEET
- LOWER: APPROX. 8 FEET

HIGHLIGHTS:

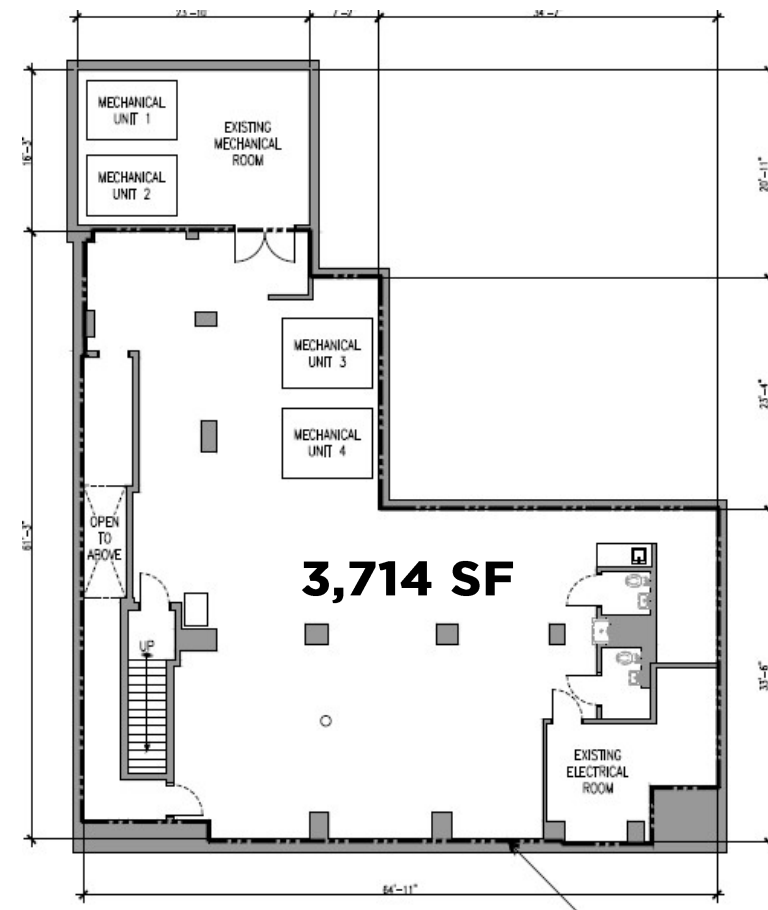
- Outstanding retail opportunity on Third Avenue at East 36th Street
- Expansive frontage along a dense residential corridor of Murray Hill
- White-box delivery condition available
- Most uses and logical divisions considered
- Ideal for markets, personal services, fitness, non-vented food & beverage
- Formerly Walgreens



545 THIRD AVENUE



GROUND FLOOR



LOWER LEVEL

545 THIRD AVENUE



NEIGHBORING RETAILERS & RESTAURANTS

THE UPS STORE
CITY MD
TD BANK

D'AGOSTINO
CHIPOTLE
QQ NAILS

BAGEL BOSS
ORANGETHEORY
NY SPORTS CLUB

SHAKE SHACK
WAGAMAMA
STARBUCKS



545

THIRD AVENUE

**MURRAY HILL
NORTHEAST CORNER OF EAST 36TH STREET**

CONTACT INFORMATION

Please contact us with leasing inquiries:

SEAN MORAN

+1 212 841 7668

sean.moran@cushwake.com

PATRICK O'ROURKE

+1 212 660 7777

patrick.orourke@cushwake.com

CATHERINE MERCK

+1 212 698 2621

catherine.merck@cushwake.com

DANA MISCHLER

+1 212 841 7581

dana.mischler@cushwake.com

©2026 Cushman & Wakefield. All rights reserved. The information contained in this communication is strictly confidential. This information has been obtained from sources believed to be reliable but has not been verified. NO WARRANTY OR REPRESENTATION, EXPRESS OR IMPLIED, IS MADE AS TO THE CONDITION OF THE PROPERTY (OR PROPERTIES) REFERENCED HEREIN OR AS TO THE ACCURACY OR COMPLETENESS OF THE INFORMATION CONTAINED HEREIN, AND SAME IS SUBMITTED SUBJECT TO ERRORS, OMISSIONS, CHANGE OF PRICE, RENTAL OR OTHER CONDITIONS, WITHDRAWAL WITHOUT NOTICE, AND TO ANY SPECIAL LISTING CONDITIONS IMPOSED BY THE PROPERTY OWNER(S). ANY PROJECTIONS, OPINIONS OR ESTIMATES ARE SUBJECT TO UNCERTAINTY AND DO NOT SIGNIFY CURRENT OR FUTURE PROPERTY PERFORMANCE.

