



INDUSTRIAL FLEX BLDG. FOR LEASE

5200 N Sawyer Avenue, Garden City, Idaho
83714

3,500 SF AVAILABLE JUNE 1, 2026

PROPERTY HIGHLIGHTS

Available	3,500 SF - June 1 2026
Lease Rate	\$0.95/SF NNN
Lease Type	NNN (Est. \$0.33/SF)
Clear Height	15'
Lot Size	1.374 Acres - Partially Gated
Zoning	City of Garden City C-2 5 -
Overhead Doors	at Grade

Jennifer McEntee / jennifer.mcentee@cushwake.com / +1 208 287 9495

Bree Wells / bree.wells@cushwake.com / +1 208 287 9492

Braydon Torres / braydon.torres@cushwake.com / +1 208 207 9485

©2024 Cushman & Wakefield. All rights reserved. The information contained in this communication is strictly confidential. This information has been obtained from sources believed to be reliable but has not been verified. No warranty or representation, express or implied, is made as to the condition of the property (or properties) referenced herein or as to the accuracy or completeness of the information contained herein, and same is submitted subject to errors, omissions, change of price, rental or other conditions, withdrawal without notice, and to any special listing conditions imposed by the property owner(s). Any projections, opinions or estimates are subject to uncertainty and do not signify current or future property performance.



FLEX BUILDING FOR LEASE

5200 N Sawyer Avenue, Garden City, Idaho 83714

3,500 SF AVAILABLE JUNE 1, 2026



BACK BUILDING - SUITES G & H - \$0.95/SF NNN





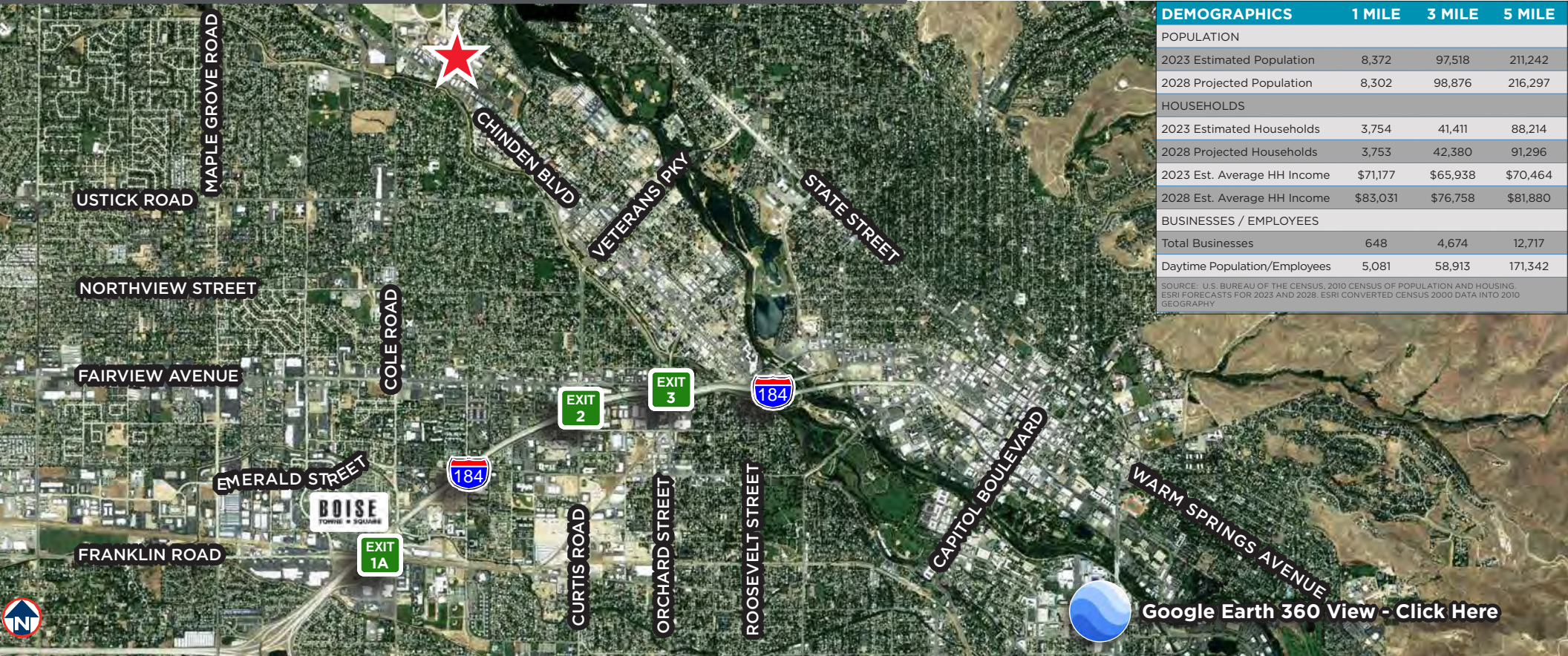
FLEX BUILDING FOR LEASE

5200 N Sawyer Avenue, Garden City, Idaho 83714

3,500 SF AVAILABLE JUNE 1, 2026



PRIME LOCATION OFF CHINDEN / HWY 20-26



DEMOGRAPHICS	1 MILE	3 MILE	5 MILE
POPULATION			
2023 Estimated Population	8,372	97,518	211,242
2028 Projected Population	8,302	98,876	216,297
HOUSEHOLDS			
2023 Estimated Households	3,754	41,411	88,214
2028 Projected Households	3,753	42,380	91,296
2023 Est. Average HH Income	\$71,177	\$65,938	\$70,464
2028 Est. Average HH Income	\$83,031	\$76,758	\$81,880
BUSINESSES / EMPLOYEES			
Total Businesses	648	4,674	12,717
Daytime Population/Employees	5,081	58,913	171,342

SOURCE: U.S. BUREAU OF THE CENSUS, 2010 CENSUS OF POPULATION AND HOUSING, ESRI FORECASTS FOR 2023 AND 2028. ESRI CONVERTED CENSUS 2000 DATA INTO 2010 GEOGRAPHY

[Google Earth 360 View - Click Here](#)

Jennifer McEntee / jennifer.mcentee@cushwake.com / +1 208 287 9495

Bree Wells / bree.wells@cushwake.com / +1 208 287 9492

Braydon Torres / braydon.torres@cushwake.com / +1 208 207 9485