

RADAR ROAD INDUSTRIAL PARK



Radar Road | Greensboro, NC

Available For Lease ±4,800 - 26,525 RSF

Jason Ofsanko
Executive Director
+1 336 812 3300
Jason.Ofsanko@cushwake.com

Jordan Mitchell
Managing Director
+1 336 201 0495
Jordan.Mitchell@cushwake.com



SITE PLAN

LEASED

AVAILABLE



PROPERTY OVERVIEW

OFFICE IMPROVEMENTS:

- New Paint
- New LV & Carpet Flooring
- New LED Lighting
- New Bathrooms

WAREHOUSE IMPROVEMENTS:

- White-Boxed Walls
- New LED Lighting



500 - SUITE D

± 6,000 TOTAL SF AVAILABLE

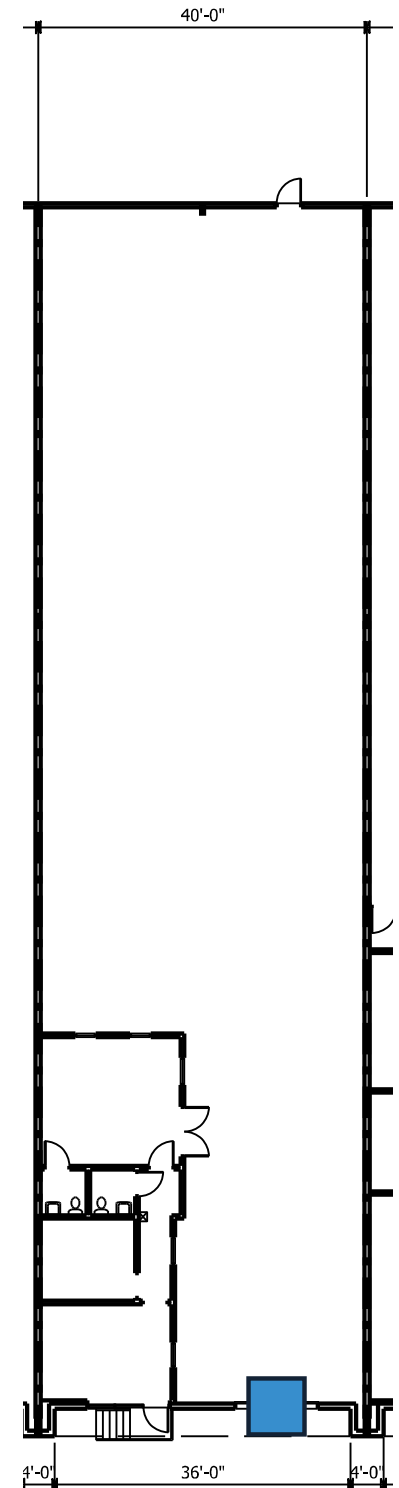
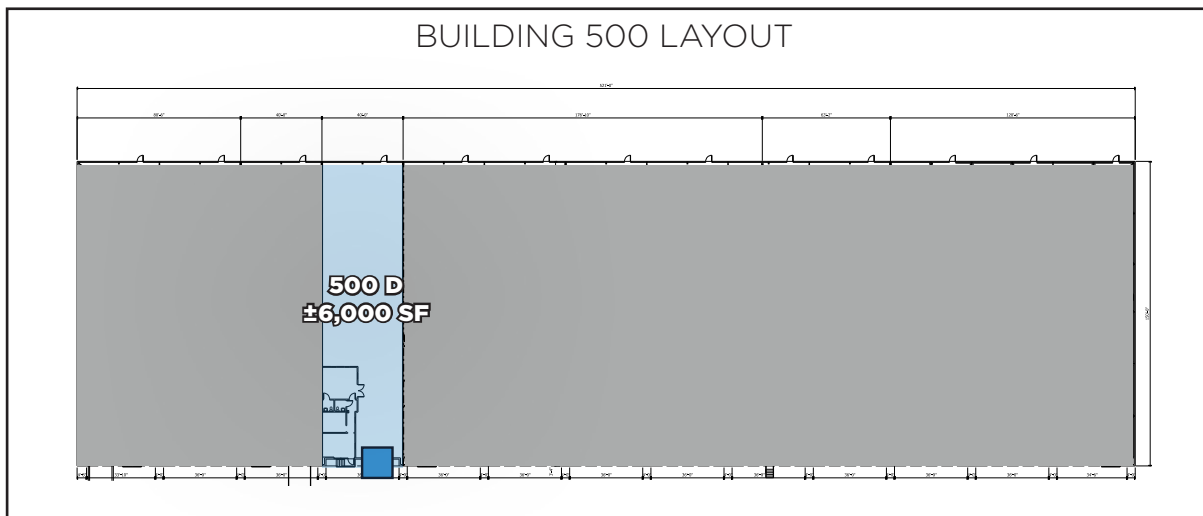
±5,091 SF WAREHOUSE SPACE

±909 SF OFFICE SPACE

23' CLEAR HEIGHT

1 DOCK HIGH DOOR

 = dock high door



500 - SUITE EFGH

± 12,000 - 26,525 TOTAL SF AVAILABLE

±24,720 SF WAREHOUSE SPACE

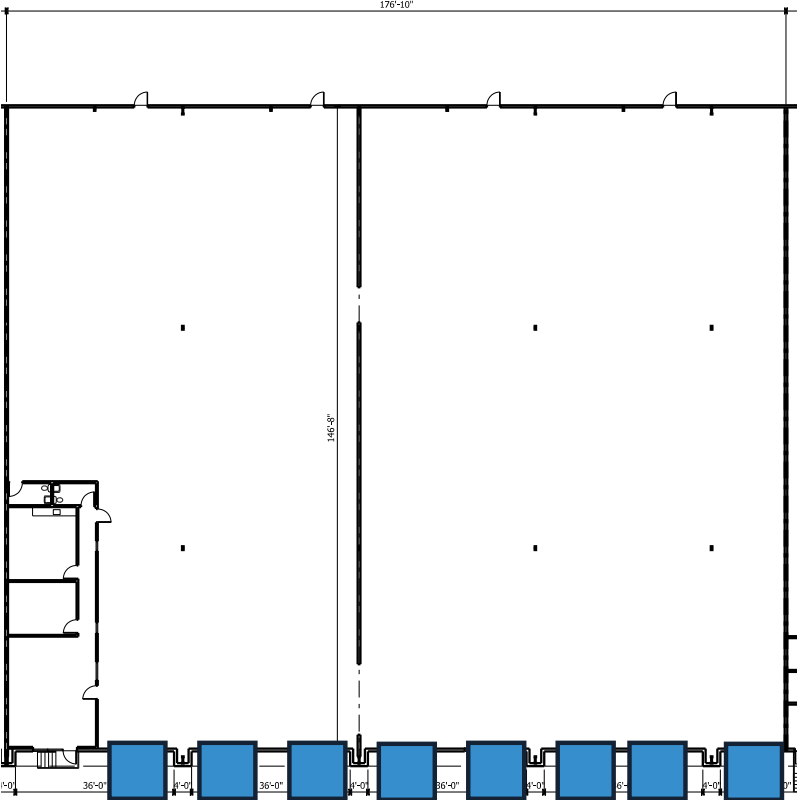
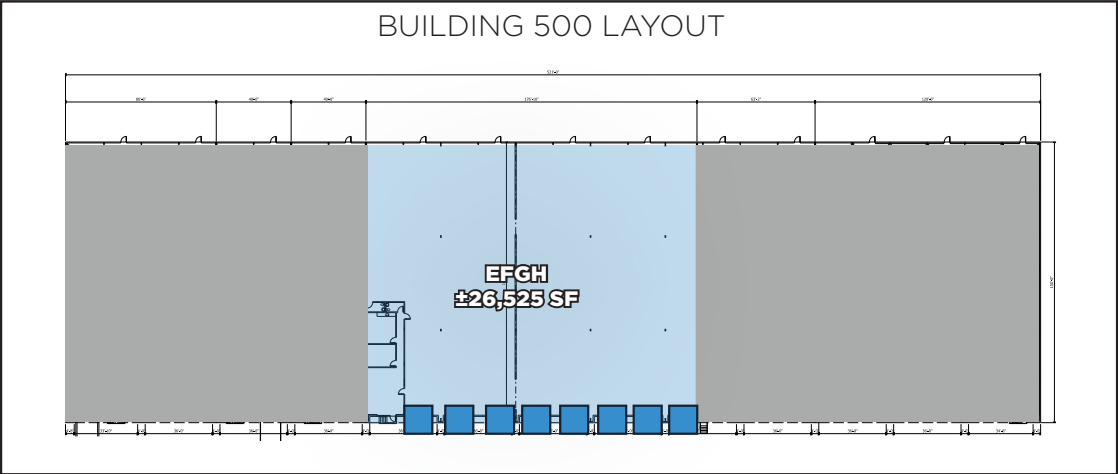
±1,805 SF OFFICE SPACE

23' CLEAR HEIGHT

8 DOCK HIGH DOORS

AVAILABLE 6/30/26

 = dock high door



502 - SUITE AB

± 5,000-15,000 TOTAL SF AVAILABLE

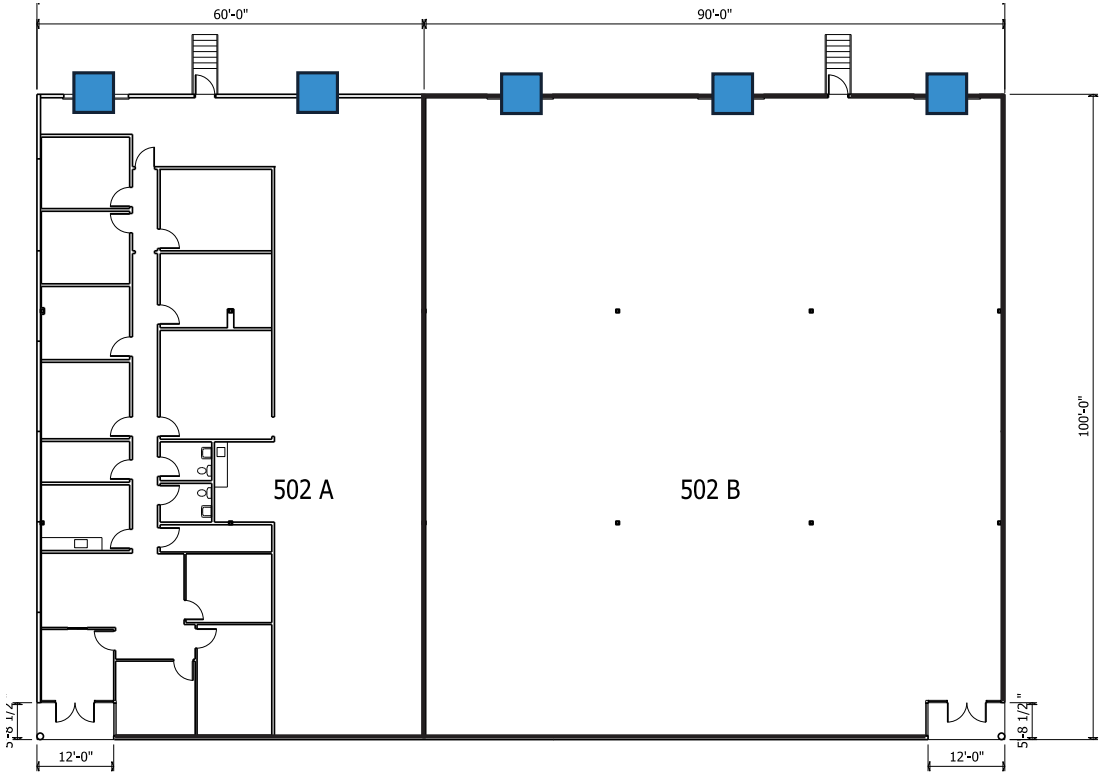
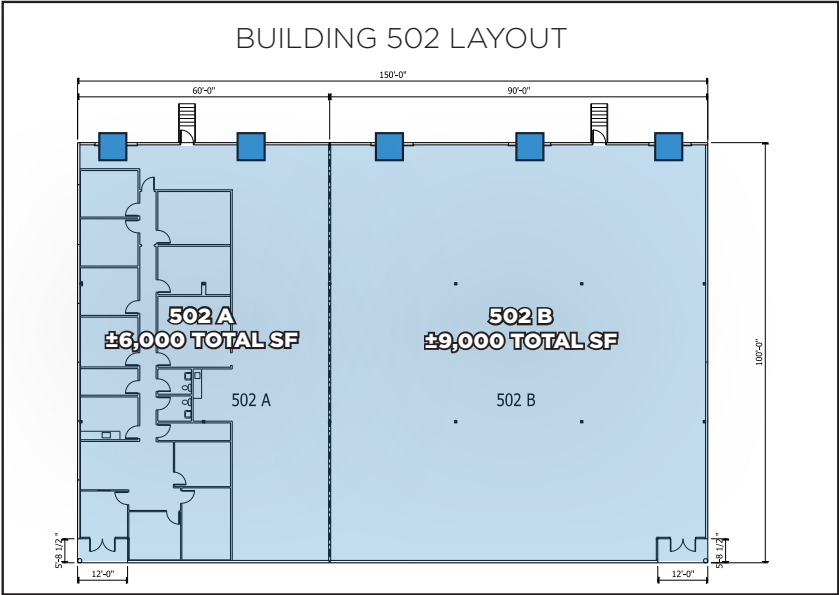
±12,227 SF WAREHOUSE SPACE

±2,773 SF OFFICE SPACE

23' CLEAR HEIGHT

5 DOCK HIGH DOORS

Suite A AVAILABLE 5/31/26



■ = dock high doors

504 - SUITE B

± 4,800 TOTAL SF AVAILABLE

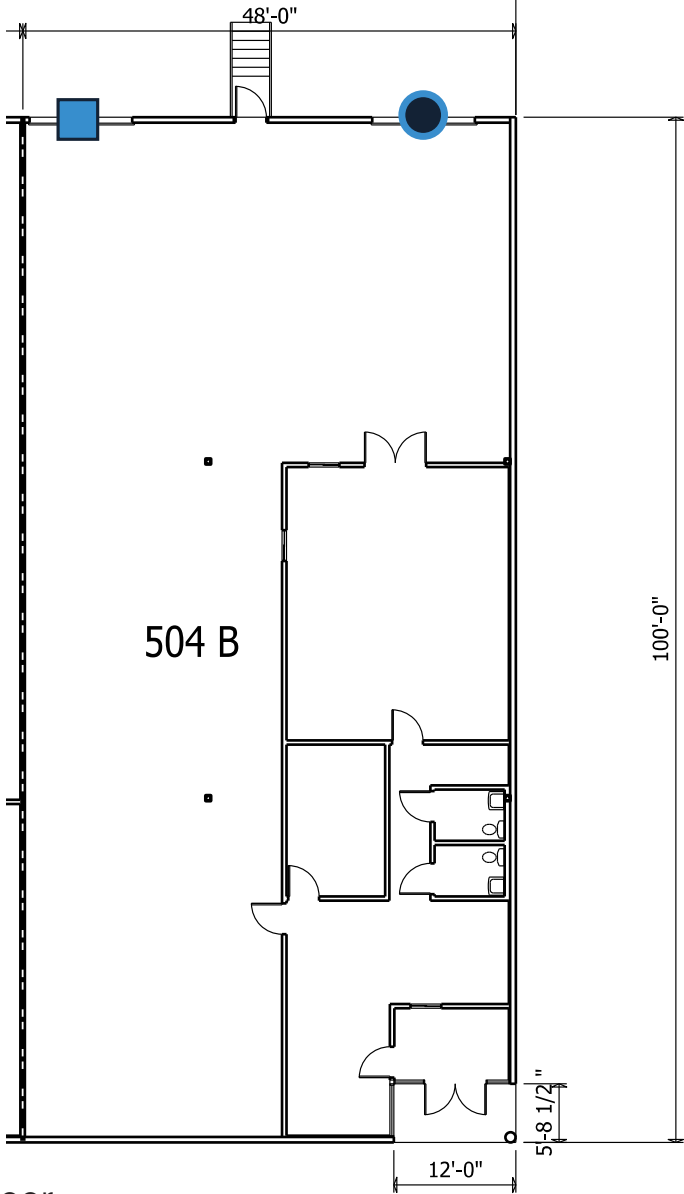
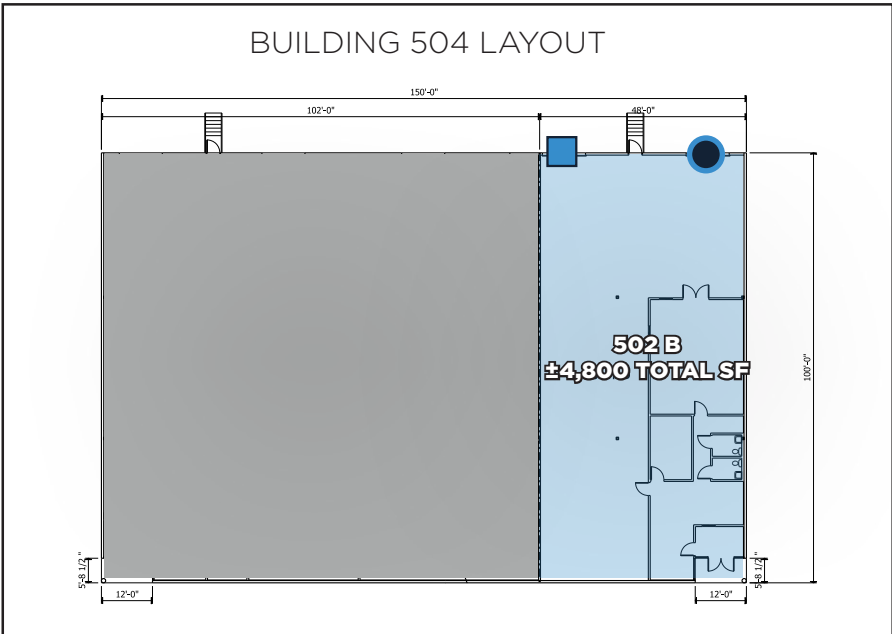
±3,298 SF WAREHOUSE SPACE

±1,502 SF OFFICE SPACE

23' CLEAR HEIGHT

1 DOCK HIGH DOOR

1 DRIVE-IN DOOR



- = dock high door
- = drive-in door

506 - SUITE A

± 6,000 TOTAL SF AVAILABLE

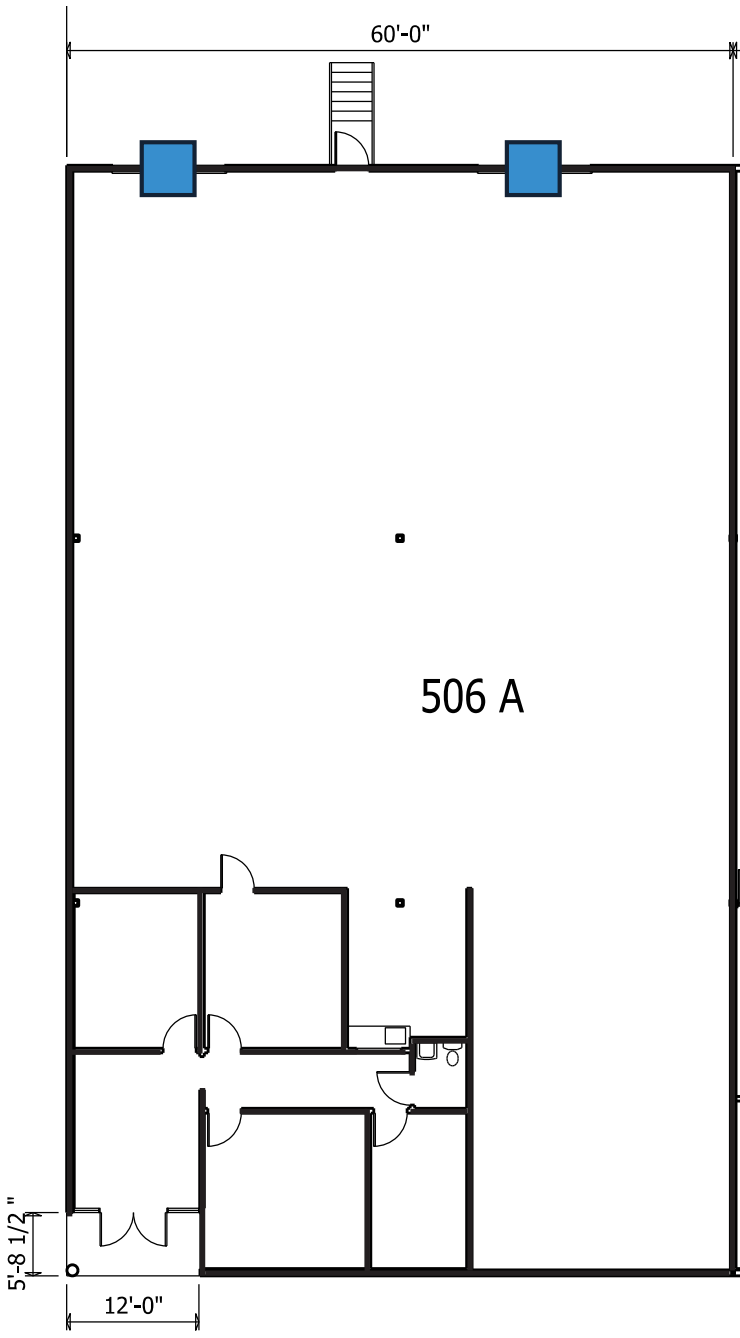
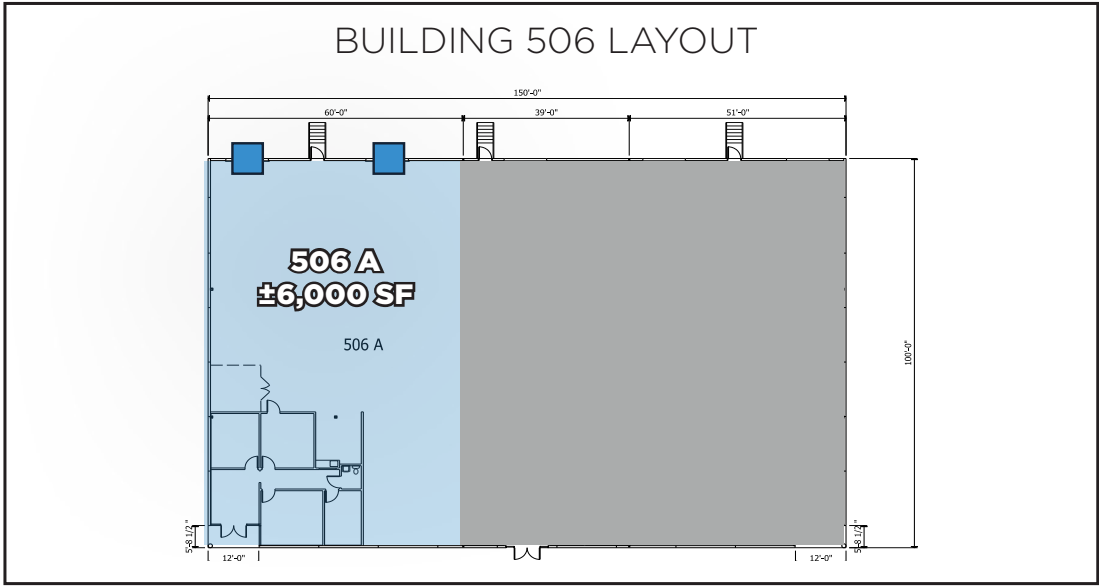
±4,880 SF WAREHOUSE SPACE

±1,120 SF OFFICE SPACE

23' CLEAR HEIGHT

2 DOCK HIGH DOORS

 = dock high doors




506 - SUITE C

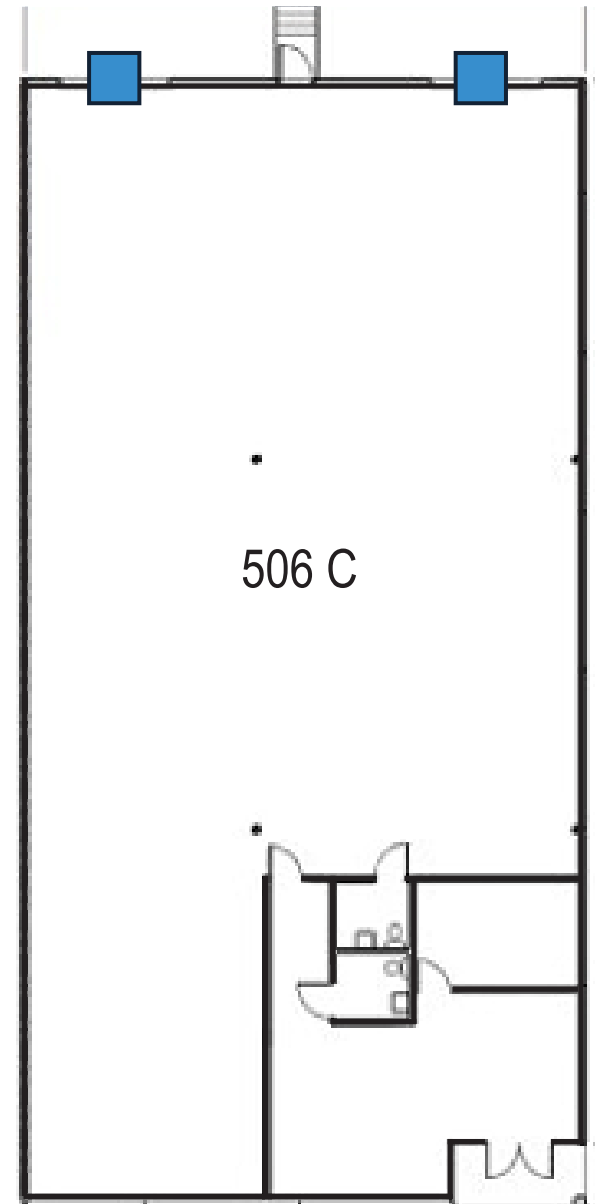
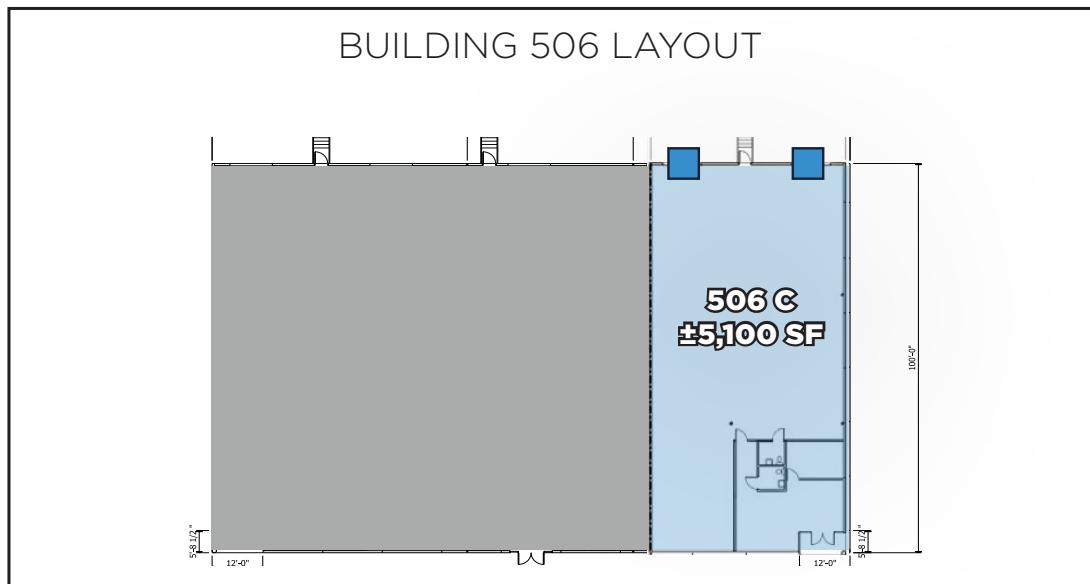
± 5,100 TOTAL SF AVAILABLE

±5,100 SF WAREHOUSE SPACE

23' CLEAR HEIGHT

2 DOCK HIGH DOORS

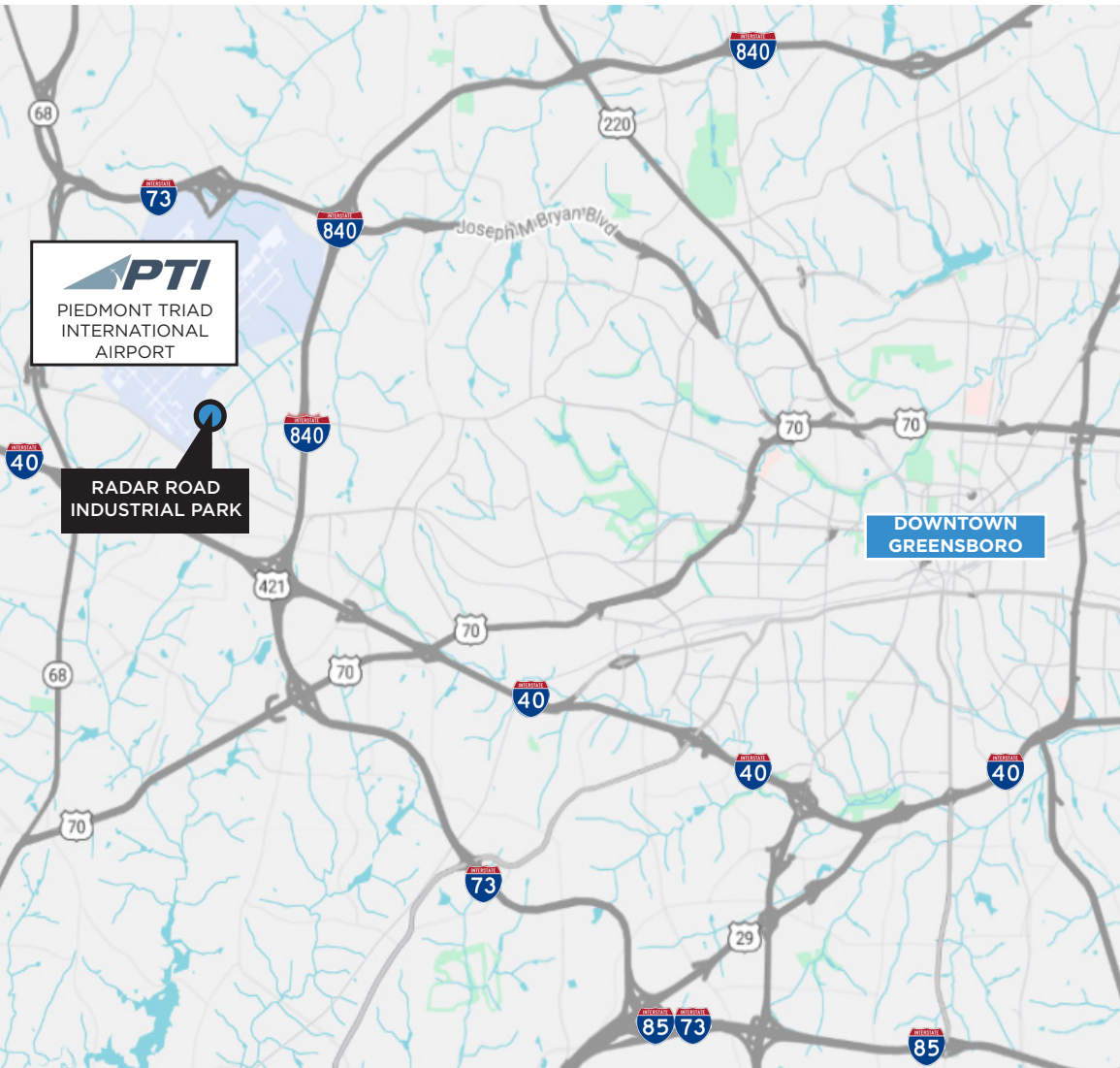
 = dock high doors



NEARBY NEIGHBORS



DRIVE TIMES



I-40
6 min / 2.1 miles

I-73
6 min / 2.2 miles

I-85
13 min / 11.0 miles

I-840
3 min / 1.2 miles

PIEDMONT TRIAD INT'L AIRPORT
7 min / 5.5 miles

DOWNTOWN GREENSBORO
18 min / 11.3 miles

RADAR ROAD INDUSTRIAL PARK



For More Information, Please Contact:

Jason Ofsanko
Executive Director
+1 336 812 3300
Jason.Ofsanko@cushwake.com

Jordan Mitchell
Managing Director
+1 336 201 0495
Jordan.Mitchell@cushwake.com



©2025 Cushman & Wakefield. All rights reserved. The information contained in this communication is strictly confidential. This information has been obtained from sources believed to be reliable but has not been verified. NO WARRANTY OR REPRESENTATION, EXPRESS OR IMPLIED, IS MADE AS TO THE CONDITION OF THE PROPERTY (OR PROPERTIES) REFERENCED HEREIN OR AS TO THE ACCURACY OR COMPLETENESS OF THE INFORMATION CONTAINED HEREIN, AND SAME IS SUBMITTED SUBJECT TO ERRORS, OMISSIONS, CHANGE OF PRICE, RENTAL OR OTHER CONDITIONS, WITHDRAWAL WITHOUT NOTICE, AND TO ANY SPECIAL LISTING CONDITIONS IMPOSED BY THE PROPERTY OWNER(S). ANY PROJECTIONS, OPINIONS OR ESTIMATES ARE SUBJECT TO UNCERTAINTY AND DO NOT SIGNIFY CURRENT OR FUTURE PROPERTY PERFORMANCE.