

Buford Mill Distribution Center

2000 Buford Mill Drive, Buford, GA 30519

BUILDING 200 - AVAILABLE NOW!



FOR SUBLEASE



SPACE AVAILABLE

91,920 RSF

OFFICE SPACE

+/- 5,350 SF

REMAINING TERM

February 28, 2031

LOCATION

Interstate Frontage
on I-985



Contact
Information:

James Phillpott
Executive Director
+1 404 259 7130
james.phillpott@cushwake.com

Connor Larkin
Director
+1 404 683 3582
connor.larkin@cushwake.com

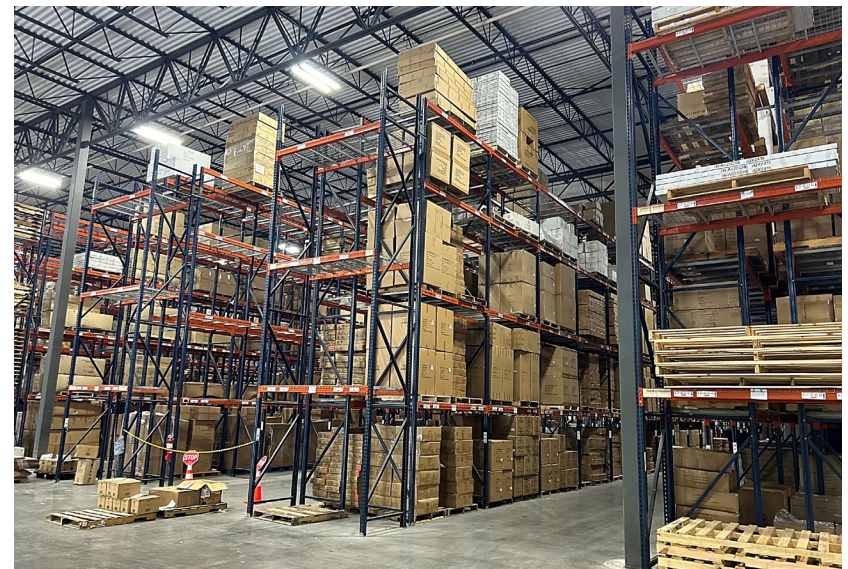


PROPERTY HIGHLIGHTS

FOR SUBLEASE

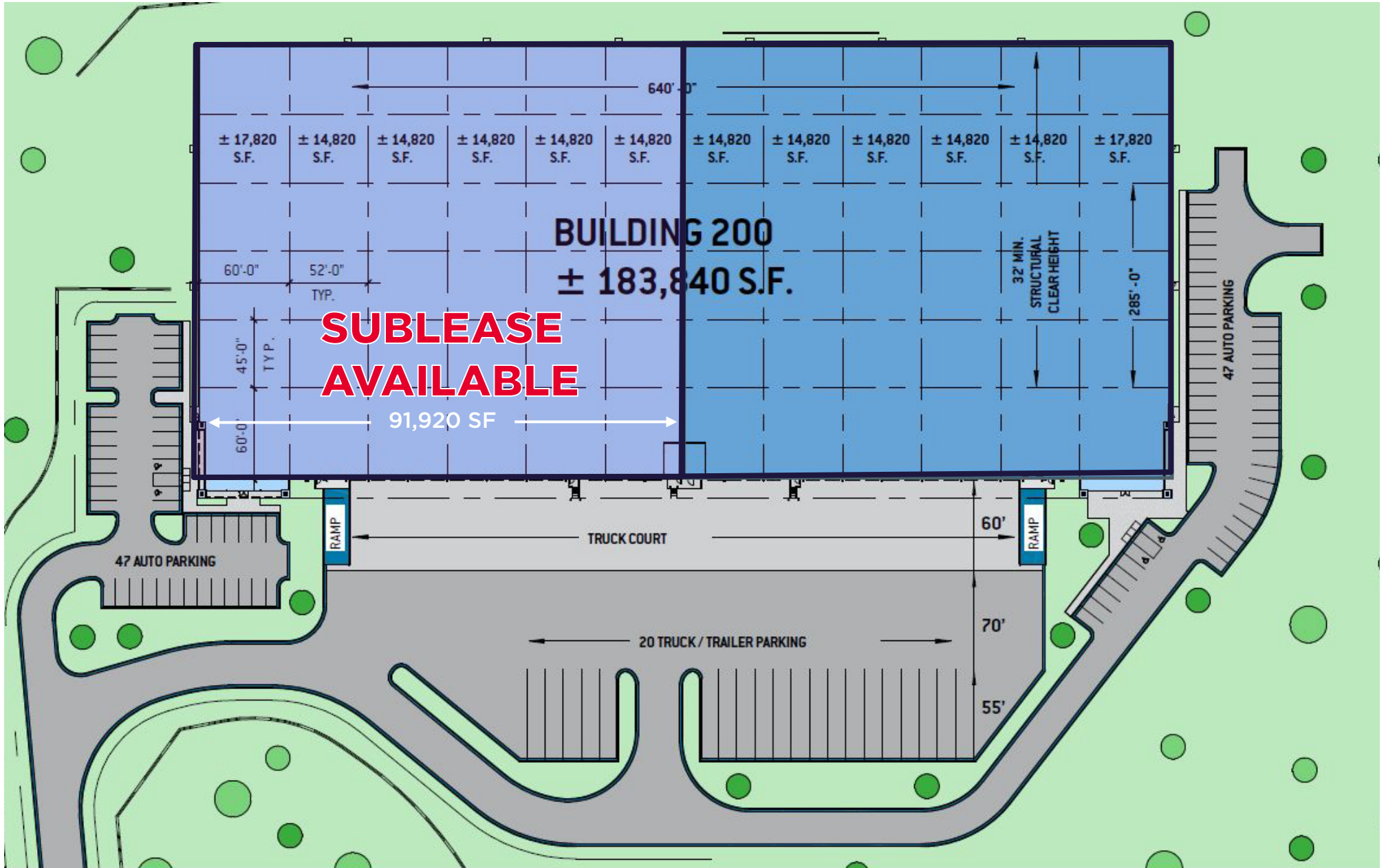
91,920 SF AVAILABLE

Building	<ul style="list-style-type: none">• 183,840 SF• Front Load Configuration• Interstate Frontage on I-985
Available Space	<ul style="list-style-type: none">• 91,920 SF• 5,350 SF Office
Loading	<ul style="list-style-type: none">• 15 Docks; 10 with 35,000 lb. Pit Levelers, Dock Seals, and Swing Lights• 1 Drive- In Ramp
Clear Height	<ul style="list-style-type: none">• 32'
Sprinklers	<ul style="list-style-type: none">• ESFR with K-17 Heads
Parking	<ul style="list-style-type: none">• 5 Trailer Stalls with Concrete Dolly Strips• 47 Auto Parks
Sublease Term	<ul style="list-style-type: none">• Master Lease Term Through 2/28/2031
Additional Features	<ul style="list-style-type: none">• HVLS Fan• Motion Sensor LED Lights• 7 Forklift Charging Stations• Racking in Place• 185' Deep Truck Court



SITE PLAN

FOR SUBLEASE



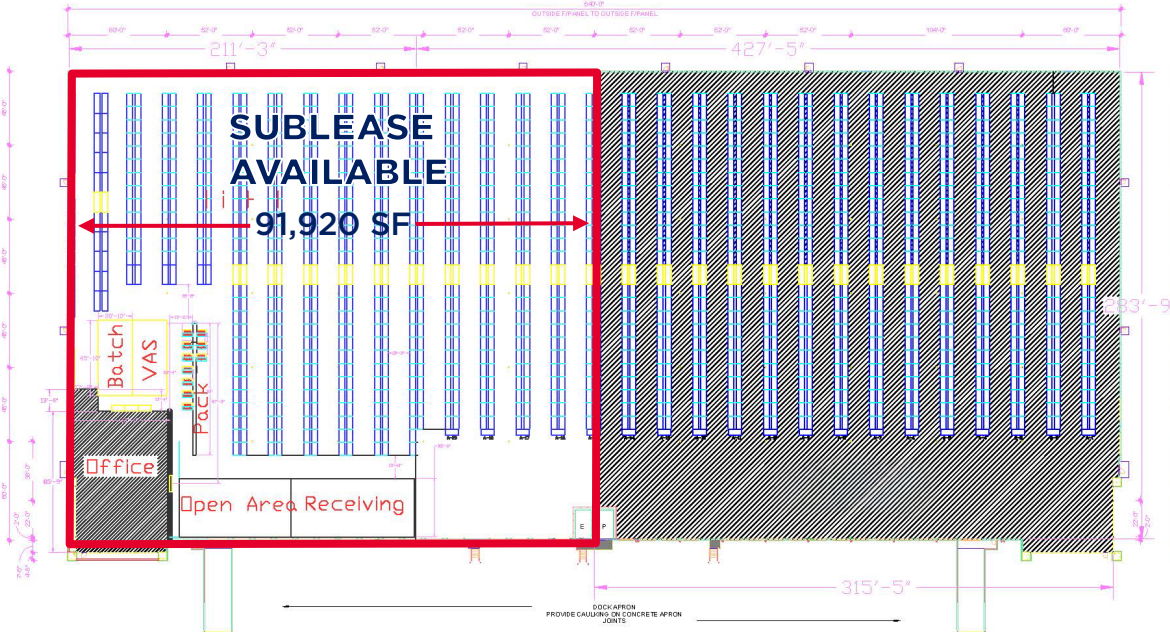
*Existing office not shown on plan

2000 BUFORD MILL DRIVE, BUFORD, GA 30519

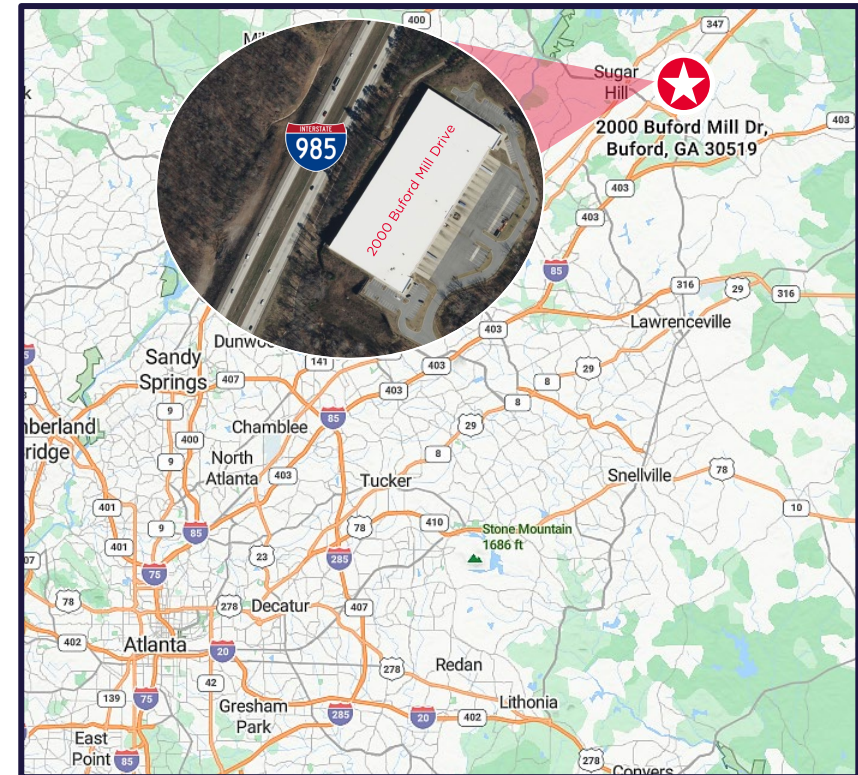
PROPERTY INFORMATION

FOR SUBLEASE

RACKING PLAN



LOCATION



CONTACT



James Phillpott
Executive Director
+1 404 259 7130
james.phillpott@cushwake.com



Connor Larkin
Director
+1 404 683 3582
connor.larkin@cushwake.com

