



# PARK109

NEW CLASS A INDUSTRIAL

## BUILDING A, SUITE 200

25 Genesco Parkway, Suite 200  
Lebanon, Tennessee 37090



**FOR LEASE**  
**34,970 SF AVAILABLE**





# PARK109

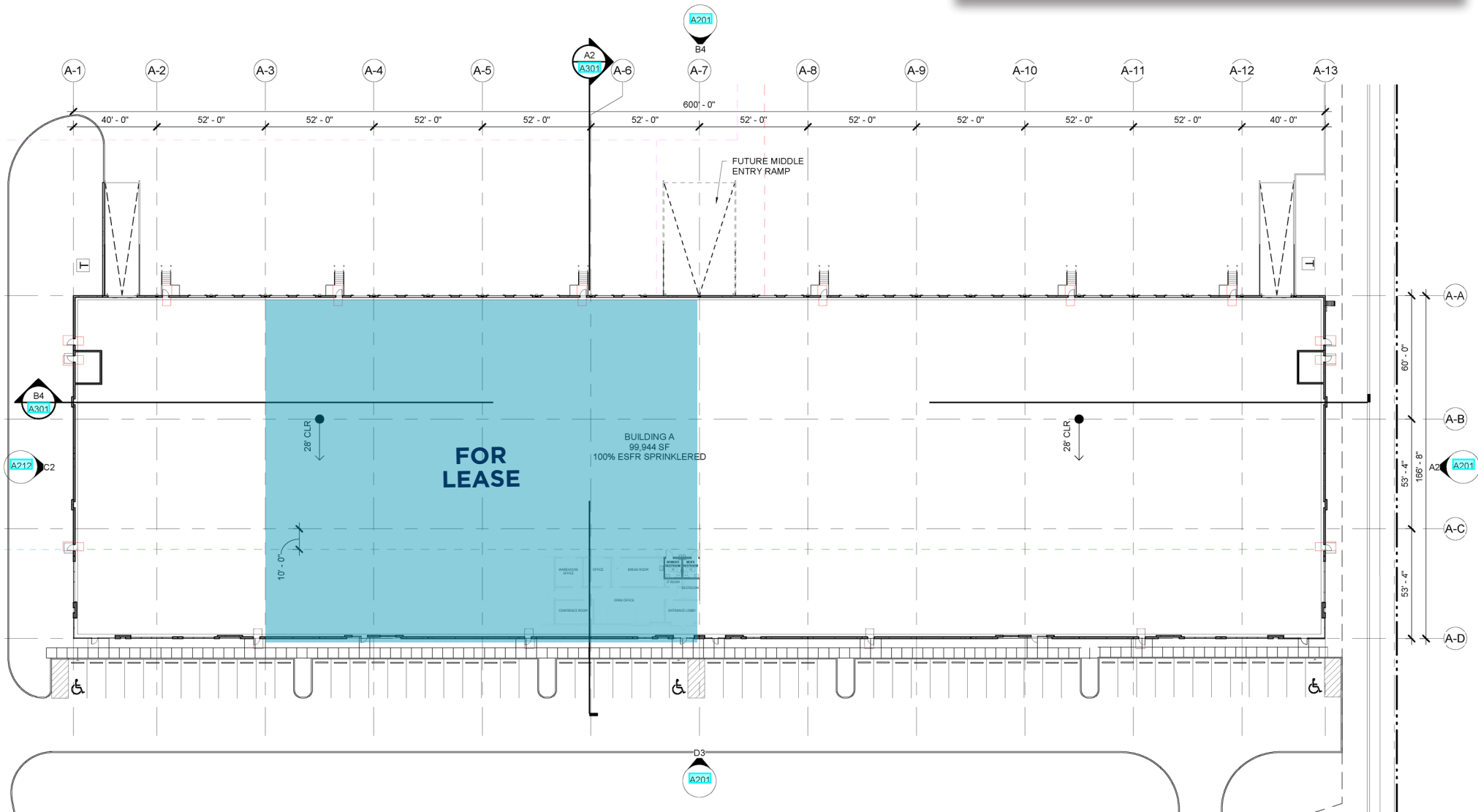
NEW CLASS A INDUSTRIAL

25 Genesco Parkway, Suite 200

Lebanon, Tennessee 37090

## BUILDING SPECIFICATIONS

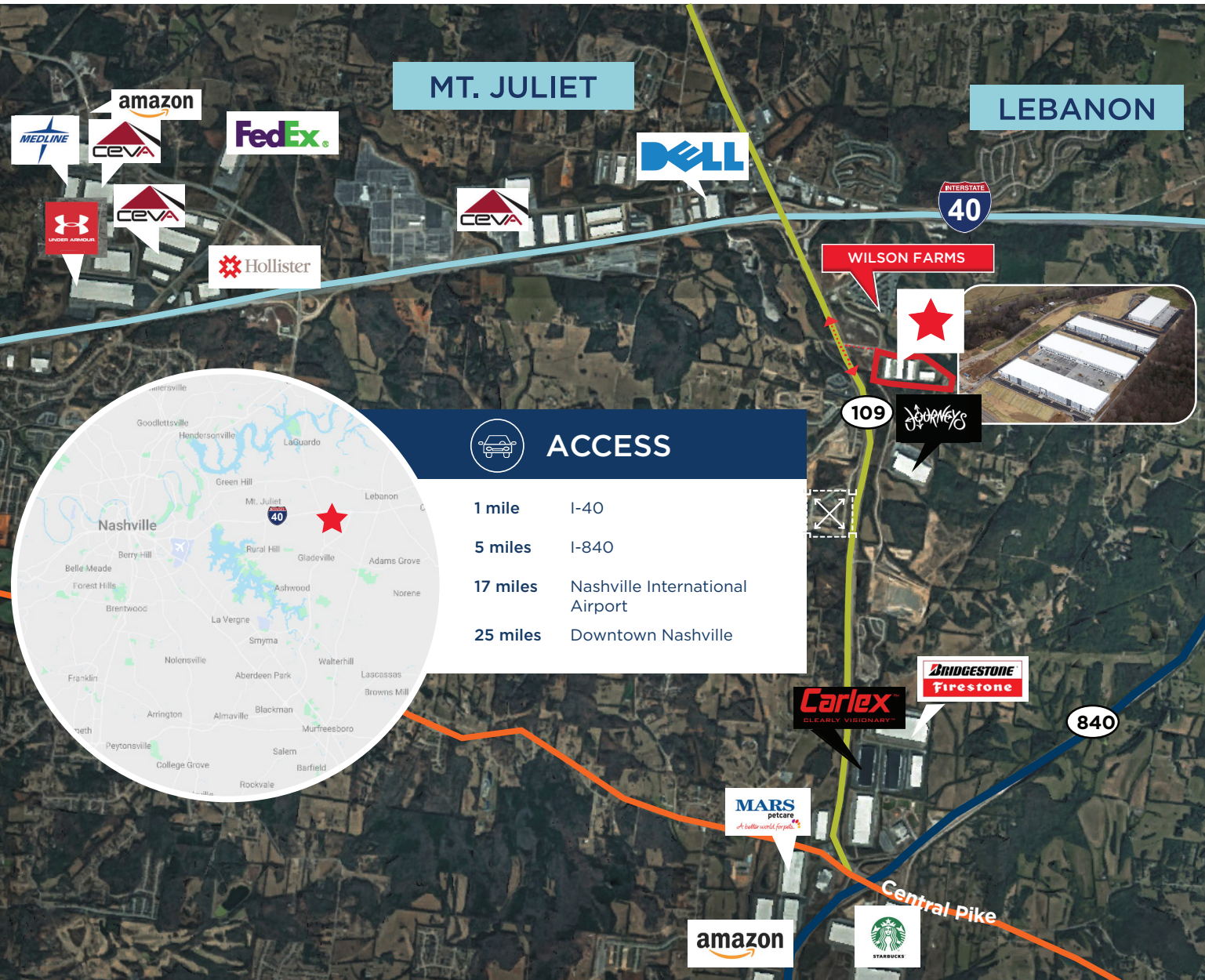
AVAILABLE: JULY 1, 2026



# PARK109

NEW CLASS A INDUSTRIAL  
25 Genesco Parkway, Suite 200  
Lebanon, Tennessee 37090

## LOCATION ACCESS



MT. JULIET

LEBANON

WILSON FARMS

109

INTERSTATE 40

840

Central Pike



### ACCESS

1 mile	I-40
5 miles	I-840
17 miles	Nashville International Airport
25 miles	Downtown Nashville



**CLASS A**  
New four (4) building park development built in 2022



**SQUARE FOOTAGE**  
34,970  
(divisible to 17,470 SF)



**OFFICE SF**  
1,692 SF



**DOCK DOORS**  
12 total, (4) equipped with pit levelers



**CLEAR HEIGHT**  
30'



**SPRINKLER**  
ESFR



**LIGHTING**  
LED to 25 FC



**POWER**  
400 amps, 480 volt,  
3-phase power service



# PARK109

NEW CLASS A INDUSTRIAL

LEASED

LEASED

LEASED

LEASED

FOR  
LEASE

**FOR MORE INFORMATION, PLEASE CONTACT:**

**ABIGAIL RIECK**

+1 615 301 2807

[abigail.riek@cushwake.com](mailto:abigail.riek@cushwake.com)

**JOHN WARD, SIOR**

+1 615 301 2834

[john.ward@cushwake.com](mailto:john.ward@cushwake.com)

1033 Demonbreun Street, Suite 600

Nashville, TN 37203

United States

+1 615 301 2800

[cushmanwakefield.com](http://cushmanwakefield.com)



**CUSHMAN &  
WAKEFIELD**