



SANTA  
CLARA  
TOWERS

REACH NEW  
HEIGHTS

3945 FREEDOM CIRCLE, SANTA CLARA

Hines



OAKTREE



CUSHMAN &  
WAKEFIELD

# PROPERTY HIGHLIGHTS

The Newly Transformed Santa Clara Towers Features a Refreshed Entry Plaza, Striking New Lobbies, Expansive Tenant Lounge, Modern Fitness Center and Birk's Café Serving Breakfast, Lunch, Snacks & Coffee.

**±1,977 - ±19,316 SF Available with expansion up to ±215,760 SF in Tower 2**

- › Premier Class A Office Towers
- › Exceptional Identity on Highway 101
- › Building Top Signage & Branding Opportunities
- › On-Site Property Management and Maintenance Staff
- › 24/7 Security
- › Helipad on Tower 1
- › EV Charging Stations & Bike Lockers
- › Garage & Surface Parking: ±3/1,000 Ratio
- › ACE Train Shuttle Stop 1 Block Away
- › LEED Gold and WELL Certified



# EXPANSIVE TENANT LOUNGE

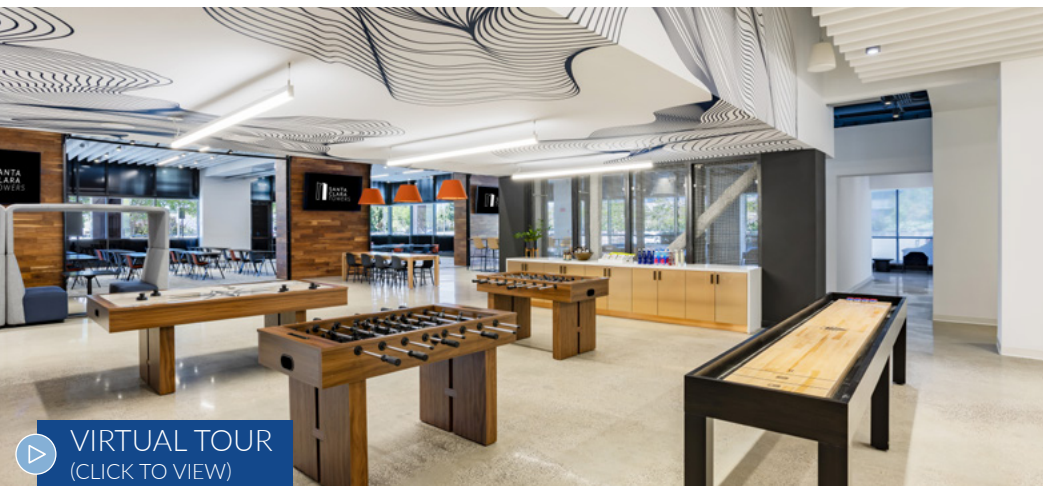
The New Tenant Lounge in Tower 2 Features a Conference Center, Open Collaboration Seating Areas and Games including Virtual Golf, Foosball, Shuffle Board and Air Hockey.



[VIRTUAL TOUR](#)  
(CLICK TO VIEW)



[VIRTUAL TOUR](#)  
(CLICK TO VIEW)



[VIRTUAL TOUR](#)  
(CLICK TO VIEW)

The Modern Fitness Center is a Cutting-Edge Offering with Showers and Locker Rooms.

# STATE-OF-THE-ART FITNESS CENTER

# NEW ENTRY PLAZA

The New Entry Plaza Features Landscaping, Modern Directory & Monument Signage and Multiple Seating Areas.



The Class A Lobbies Feature Floor-to-Ceiling Glass Entryways, a Striking Living Wall and Seating Areas Directly Adjacent to the New Birk's Express.

# MODERN LOBBIES

# BIRK'S RESTAURANT

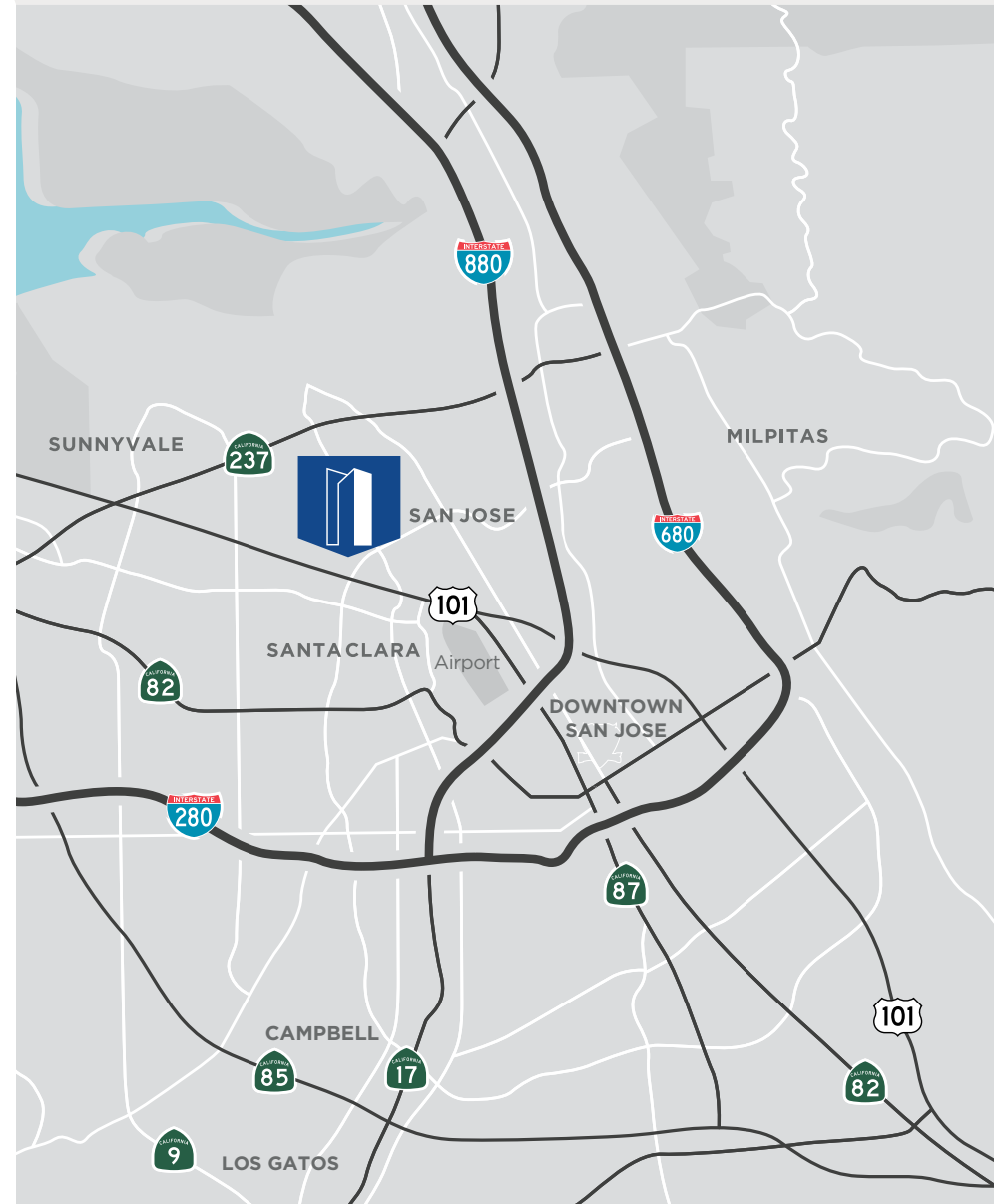
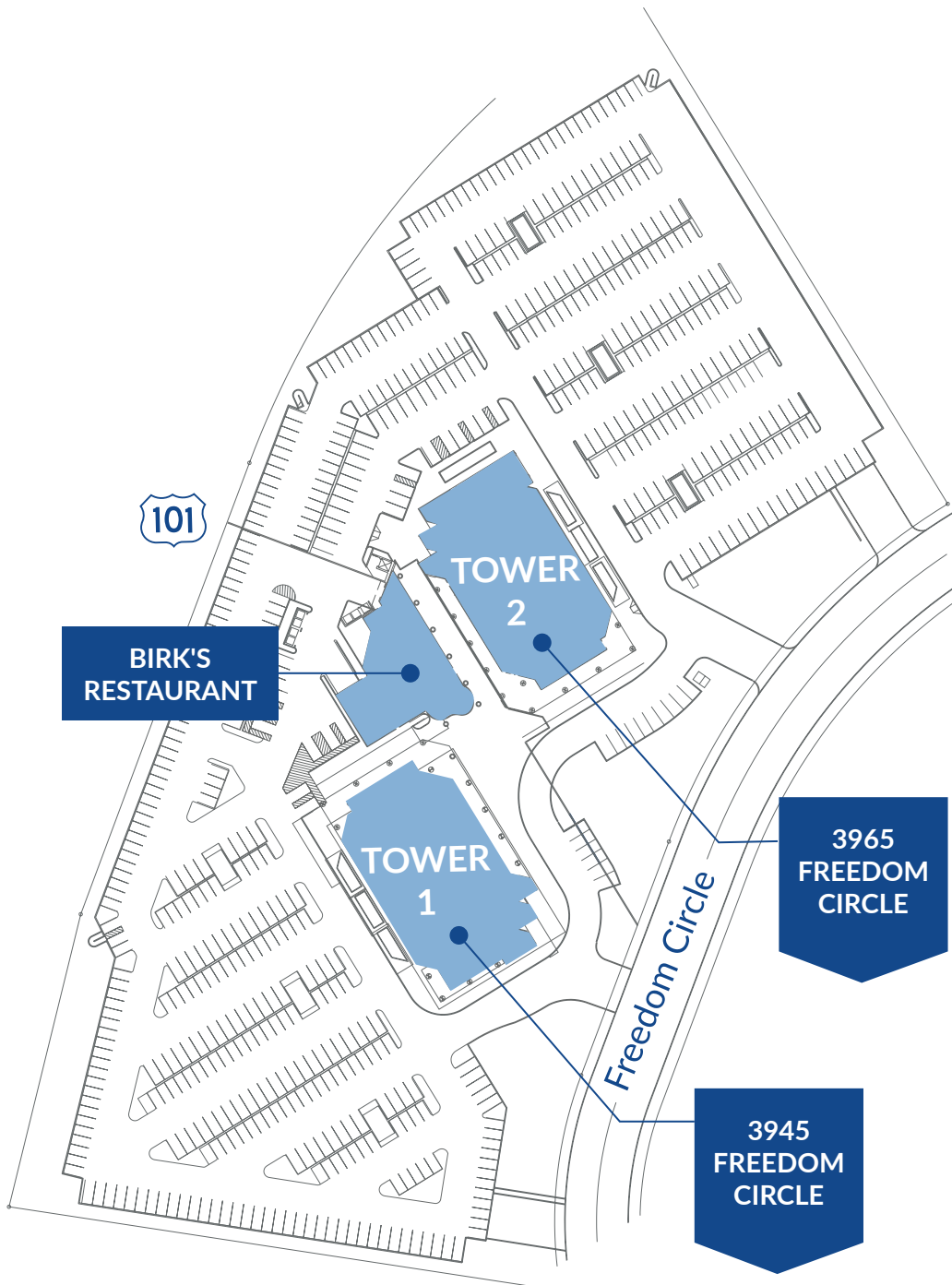
Birk's Restaurant, a South Bay Icon Since 1989, is Known for Serving Grilled Steaks, Chops and Seafood in a Classic Bistro Setting. Birk's Restaurant Serves Lunch and Dinner Monday through Friday.



The New On-Site Café Offers Breakfast, Lunch, Snacks & Coffee, which are Freshly Prepared On-Site.

NEW  
BIRK'S CAFÉ

# SITE PLAN & LOCATION



# TOWER 1

## 3945 FREEDOM CIRCLE

SUITE	SQUARE FOOTAGE	MAXIMUM CONTIGUOUS
<a href="#">Suite 660</a>	±1,977 SF	±6,903 SF
▷ <a href="#">Suite 320</a>	±2,418 SF	±18,291 SF
<a href="#">Suite 260</a>	±2,609 SF	±15,609 SF
<a href="#">Suite 950</a>	±4,365 SF	±13,781 SF
<a href="#">Suite 640</a>	±4,926 SF	±6,903 SF
<a href="#">Suite 500</a>	±5,222 SF	±14,142 SF
<a href="#">Suite 730</a>	±5,270 SF	
<a href="#">Suite 700</a>	±5,292 SF	
▷ <a href="#">Suite 200</a>	±5,940 SF	±15,609 SF
<a href="#">Suite 850</a>	±6,410 SF	
<a href="#">Suite 240</a>	±7,060 SF	
▷ <a href="#">Suite 400</a>	±7,890 SF	
<a href="#">Suite 350</a>	±7,924 SF	±18,291 SF
<a href="#">Suite 300</a>	±7,949 SF	±18,291 SF
<a href="#">Suite 540</a>	±8,920 SF	±14,142 SF
<a href="#">Suite 900</a>	±9,416 SF	±13,781 SF
<a href="#">Suite 1100</a>	±19,316 SF	



# 2<sup>ND</sup> FLOOR

±2,609 SF to ±15,609 SF

SUITE 200 [▶ VIRTUAL TOUR](#)

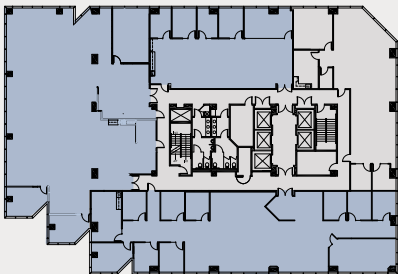
- › MARKET READY
- › 2 Offices
- › 3 Conference Rooms
- › Break Room

SUITE 240 [▶ VIRTUAL TOUR](#)

- › MARKET READY
- › 2 Offices
- › 1 Conference Room
- › Break Area

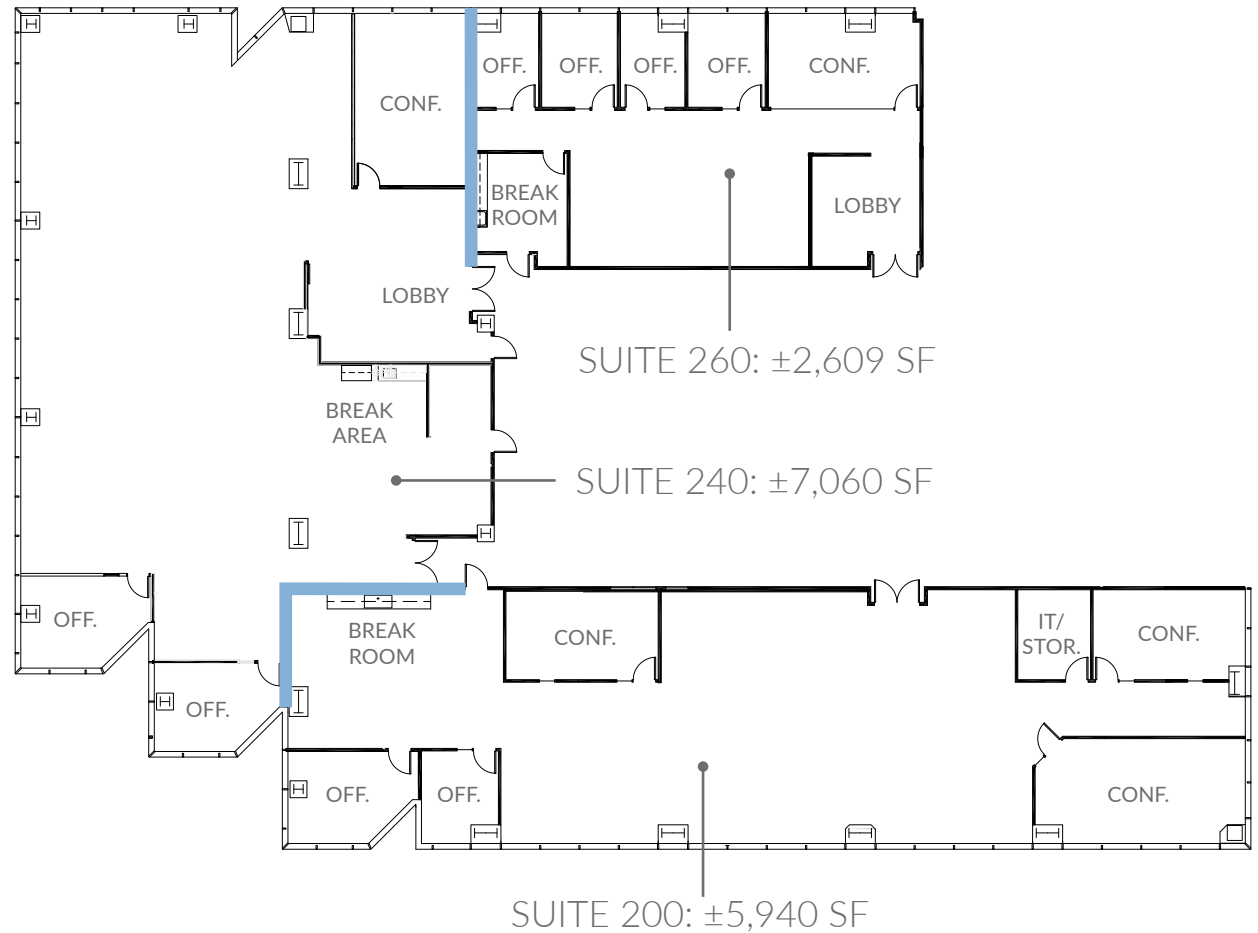
SUITE 260

- › 4 Offices
- › 1 Conference Room
- › Break Room



## TOWER 1 | 3945 FREEDOM CIRCLE

[BACK TO SUITE LIST ▶](#)



— DEMISING WALL

# 3<sup>RD</sup> FLOOR

±2,418 SF to ±18,291 SF

## SUITE 300

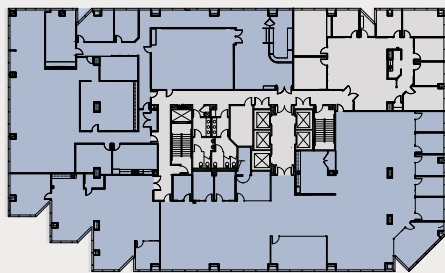
- › MARKET READY | PLUG & PLAY
- › Available August 15, 2026
- › 7 Offices
- › 2 Conference Rooms
- › Break Area
- › IT/Storage Room

## SUITE 320 [▶ VIRTUAL TOUR](#)

- › MARKET READY
- › 1 Office
- › 1 Conference Room
- › Break Area

## SUITE 350

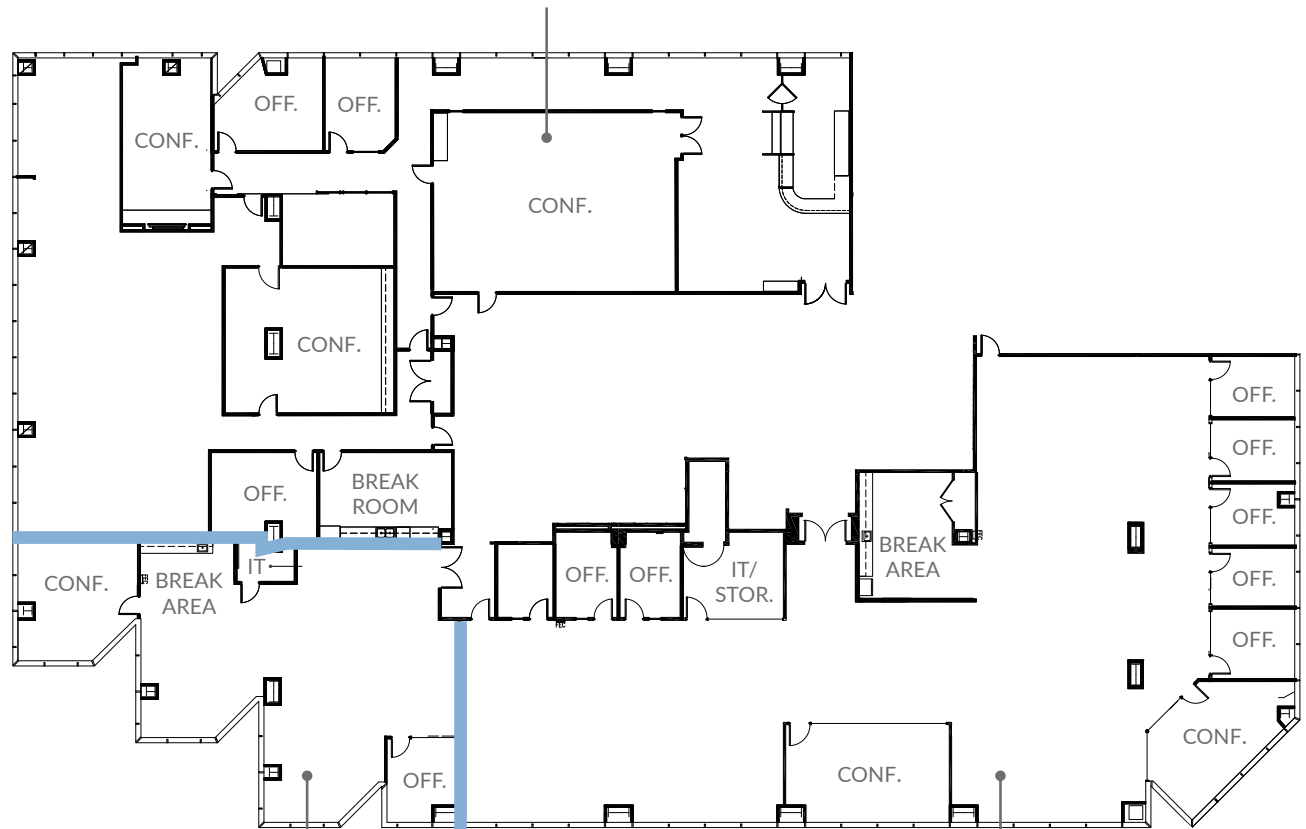
- › 3 Offices
- › 3 Conference Rooms
- › Break Room



# TOWER 1 | 3945 FREEDOM CIRCLE

[BACK TO SUITE LIST ▶](#)

SUITE 350: ±7,924 SF



SUITE 320: ±2,418 SF

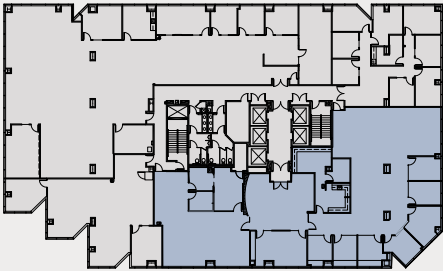
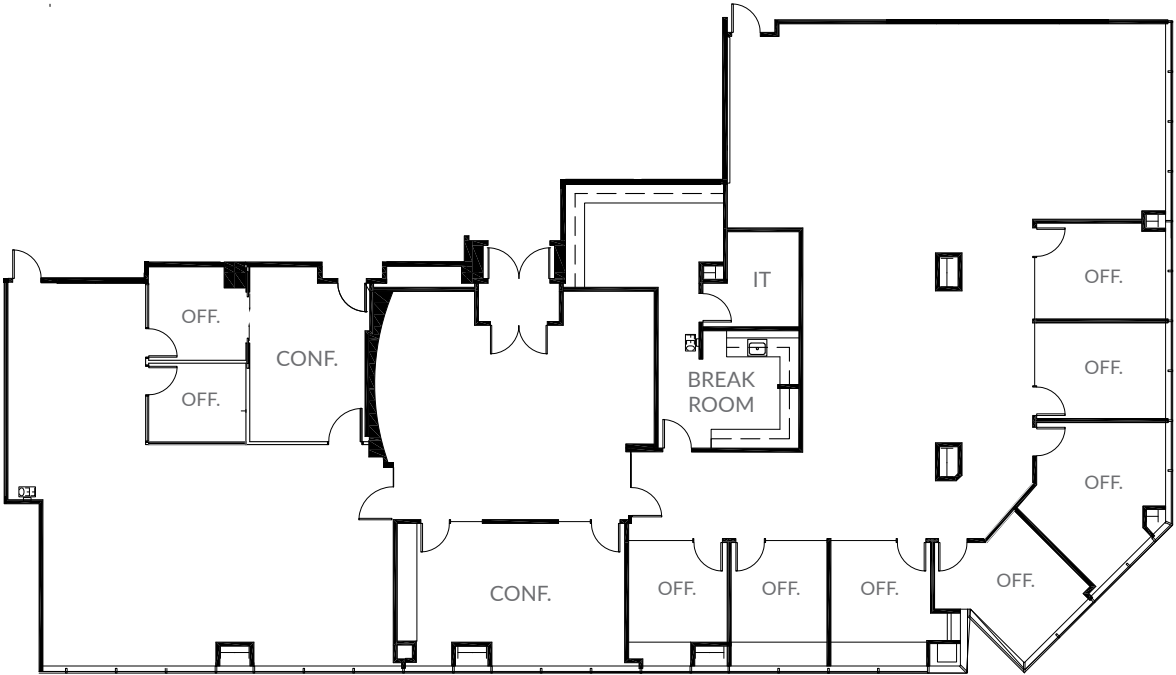
SUITE 300: ±7,949 SF

# SUITE 400

±7,890 SF | FOURTH FLOOR

- › MARKET READY
- › 9 Offices
- › 2 Conference Rooms
- › Break Room
- › IT / Storage Room

TOWER 1 | 3945 FREEDOM CIRCLE  
[BACK TO SUITE LIST](#) ▶



# 5<sup>TH</sup> FLOOR

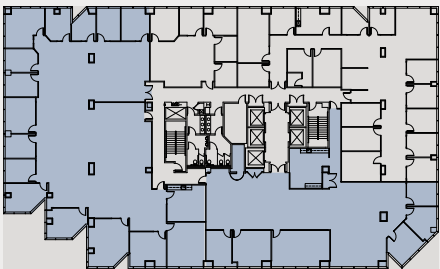
±5,222 SF to ±14,142 SF

## SUITE 500

- › 5 Offices
- › 1 Conference Room
- › Break Room

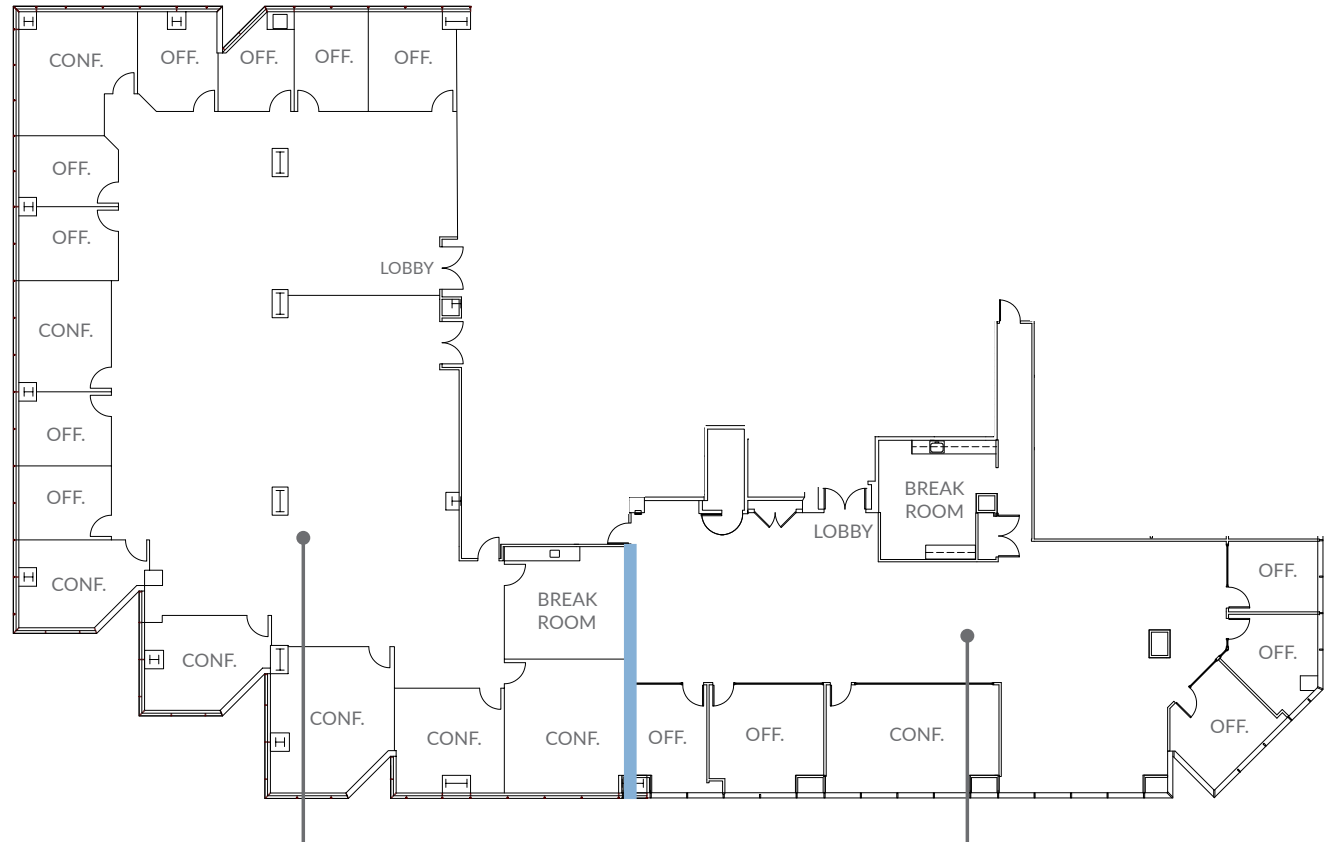
## SUITE 540

- › 8 Offices
- › 7 Conference Rooms
- › Break Room



## TOWER 1 | 3945 FREEDOM CIRCLE

[BACK TO SUITE LIST](#) ▶



SUITE 540: ±8,920SF

SUITE 500: ±5,222 SF

# 6<sup>TH</sup> FLOOR

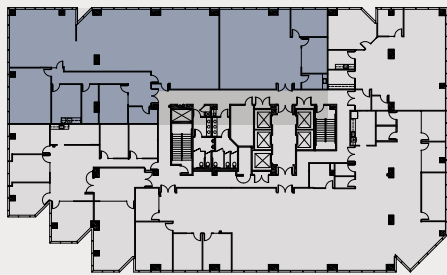
±1,977 SF to ±6,903 SF

## SUITE 640

- › 2 Conference Rooms
- › Break Room

## SUITE 660

- › 1 Office
- › 1 Conference Room
- › Break Room

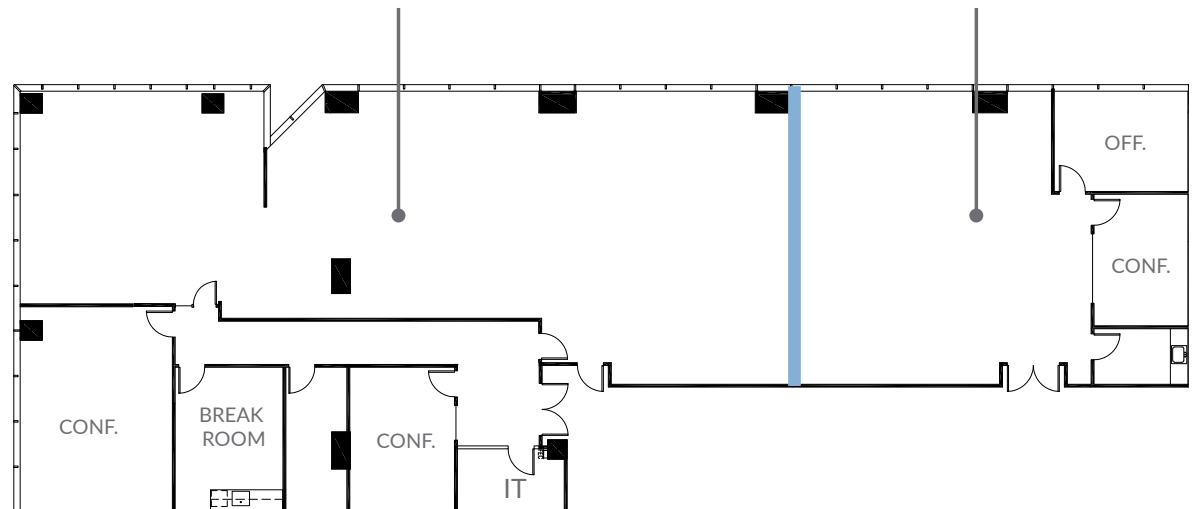


TOWER 1 | 3945 FREEDOM CIRCLE

[BACK TO SUITE LIST](#) ▶

SUITE 640: ±4,926 SF

SUITE 660: ±1,977 SF

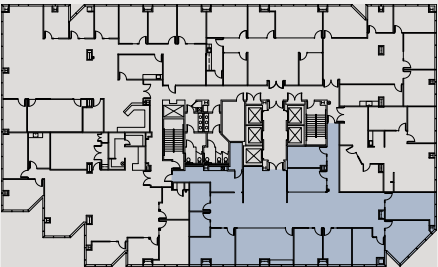
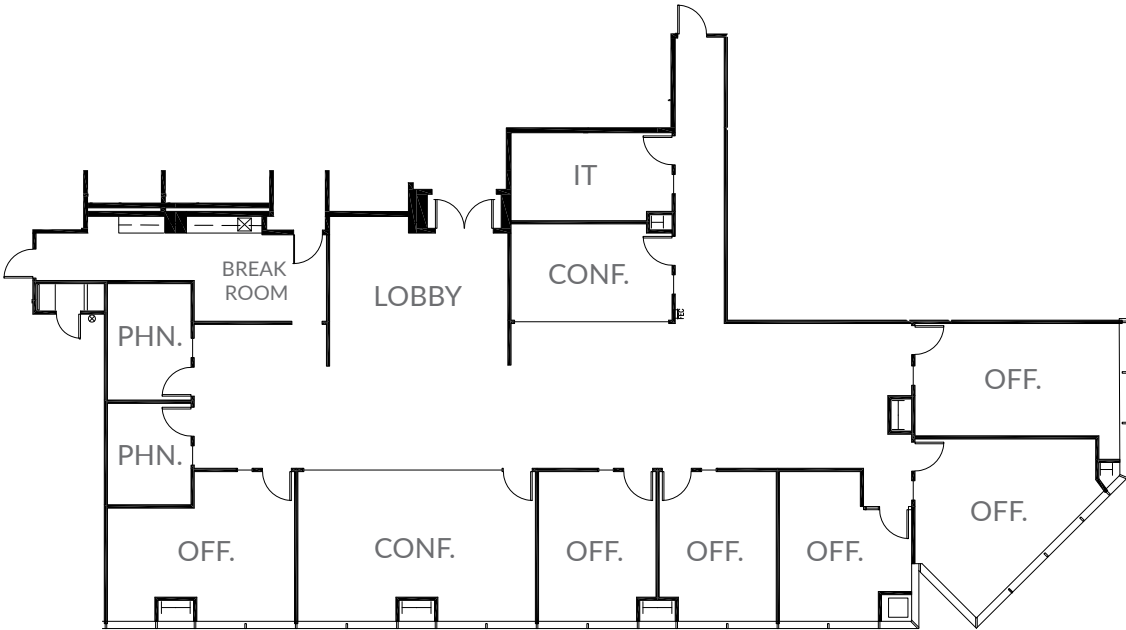


# SUITE 700

±5,292 SF | SEVENTH FLOOR

- > 6 Offices
- > 2 Conference Rooms
- > 2 Phone Rooms
- > Break Room
- > IT / Storage Room

TOWER 1 | 3945 FREEDOM CIRCLE  
[BACK TO SUITE LIST](#) ▶



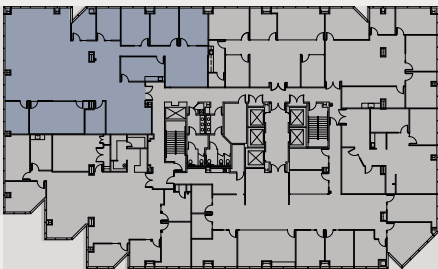
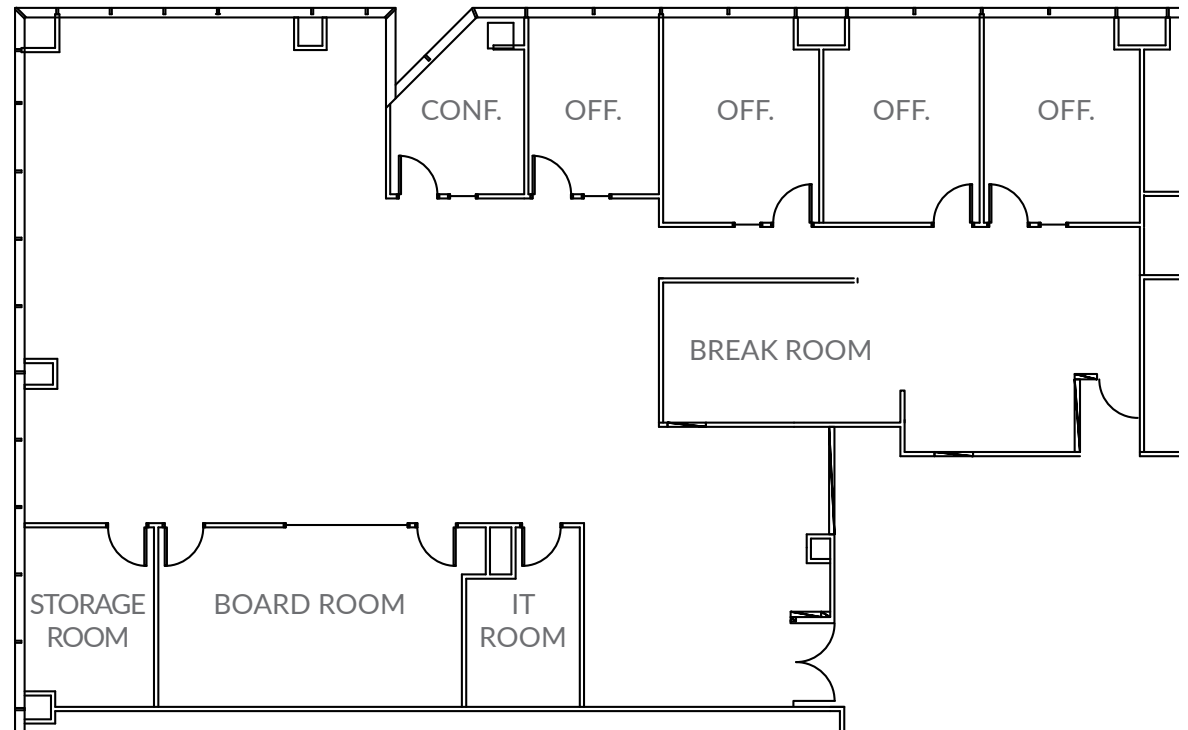
# SUITE 730

±5,270 SF | SEVENTH FLOOR

- › MARKET READY
- › 4 Offices
- › 1 Conference Room
- › 1 Board Room
- › IT Room
- › Storage Room
- › Break Room

TOWER 1 | 3945 FREEDOM CIRCLE

[BACK TO SUITE LIST](#) ▶

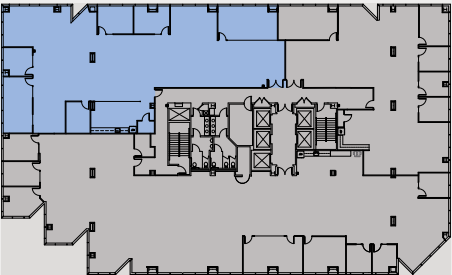
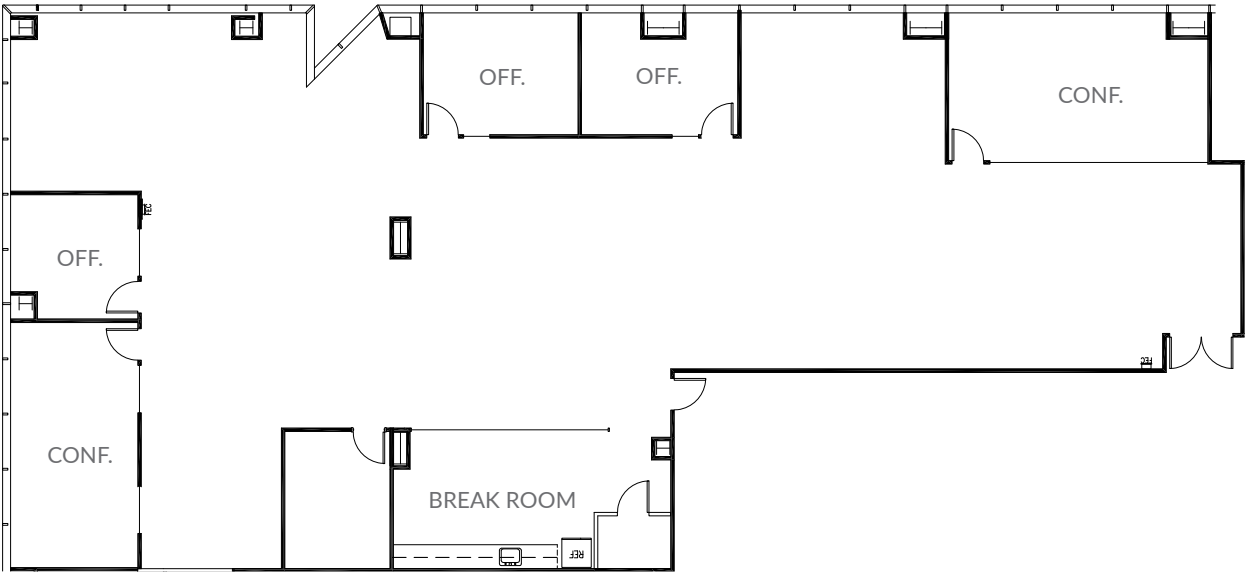


# SUITE 850

±6,410 SF | EIGHTH FLOOR

- › MARKET READY
- › 3 Offices
- › 2 Conference Rooms
- › Break Room

TOWER 1 | 3945 FREEDOM CIRCLE  
[BACK TO SUITE LIST](#) ▶



# 9<sup>TH</sup> FLOOR

±4,365 SF to ±13,781 SF

## SUITE 900

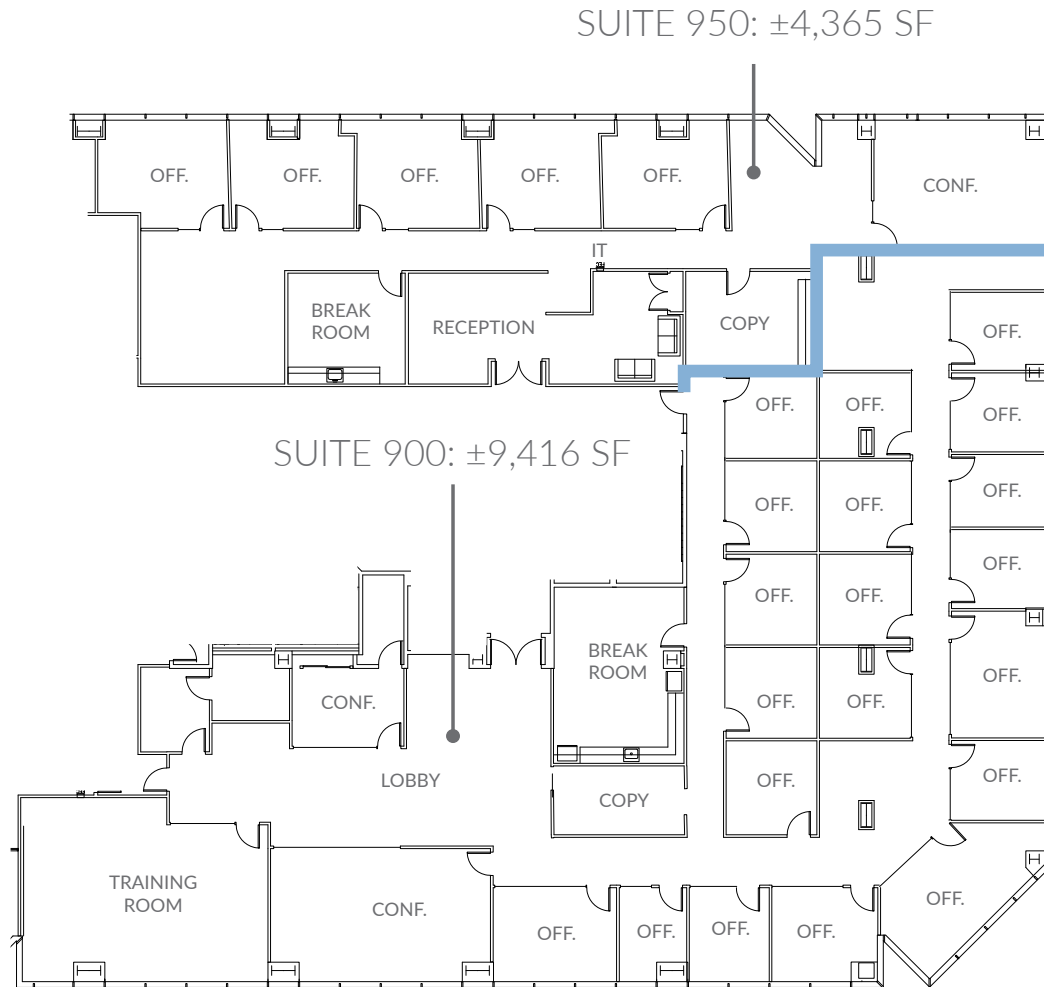
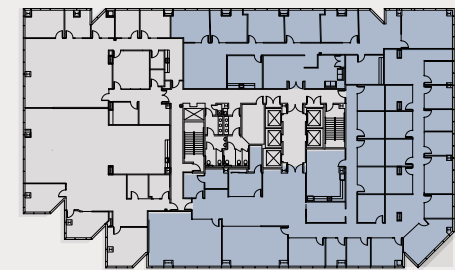
- › 20 Offices
- › 2 Conference Rooms
- › 1 Training Room
- › Break Room

## SUITE 950

- › 5 Offices
- › 1 Conference Room
- › 1 Copy Room
- › Reception Area
- › Break Room

# TOWER 1 | 3945 FREEDOM CIRCLE

[BACK TO SUITE LIST](#) ▶



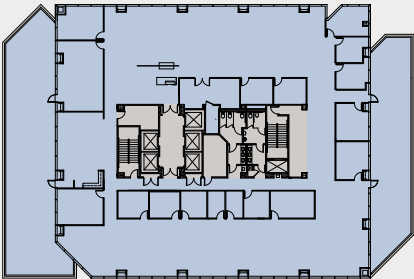
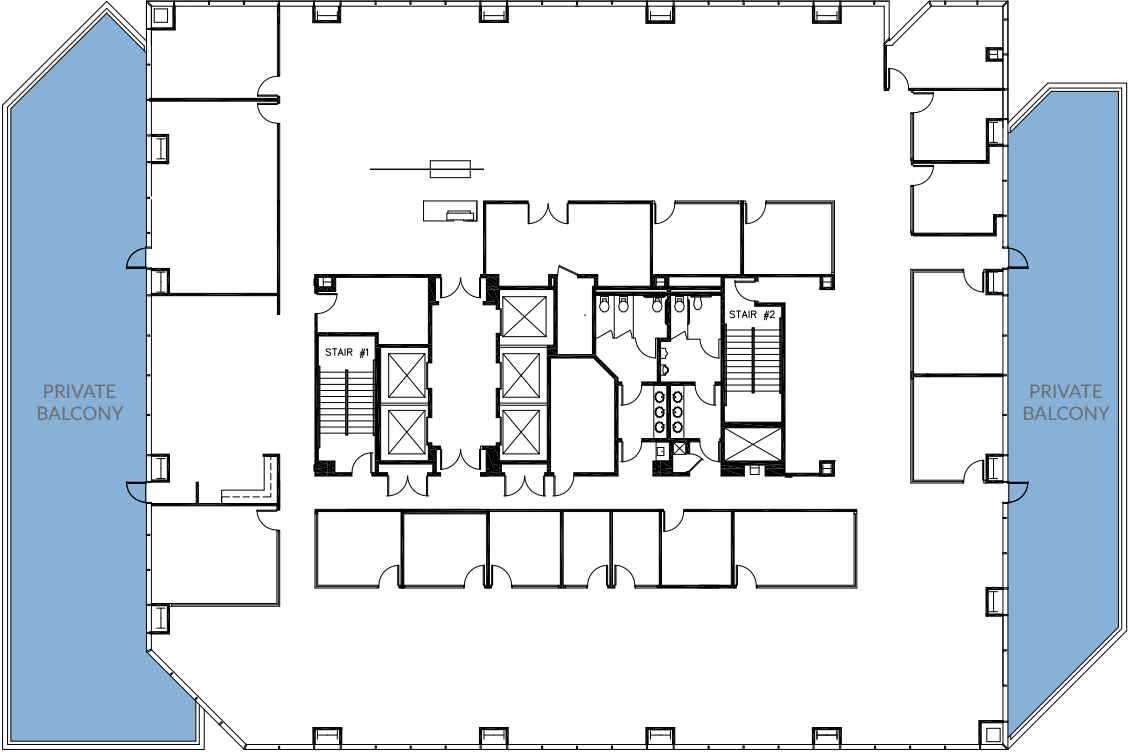
# SUITE 1100

±19,316 SF | ELEVENTH FLOOR

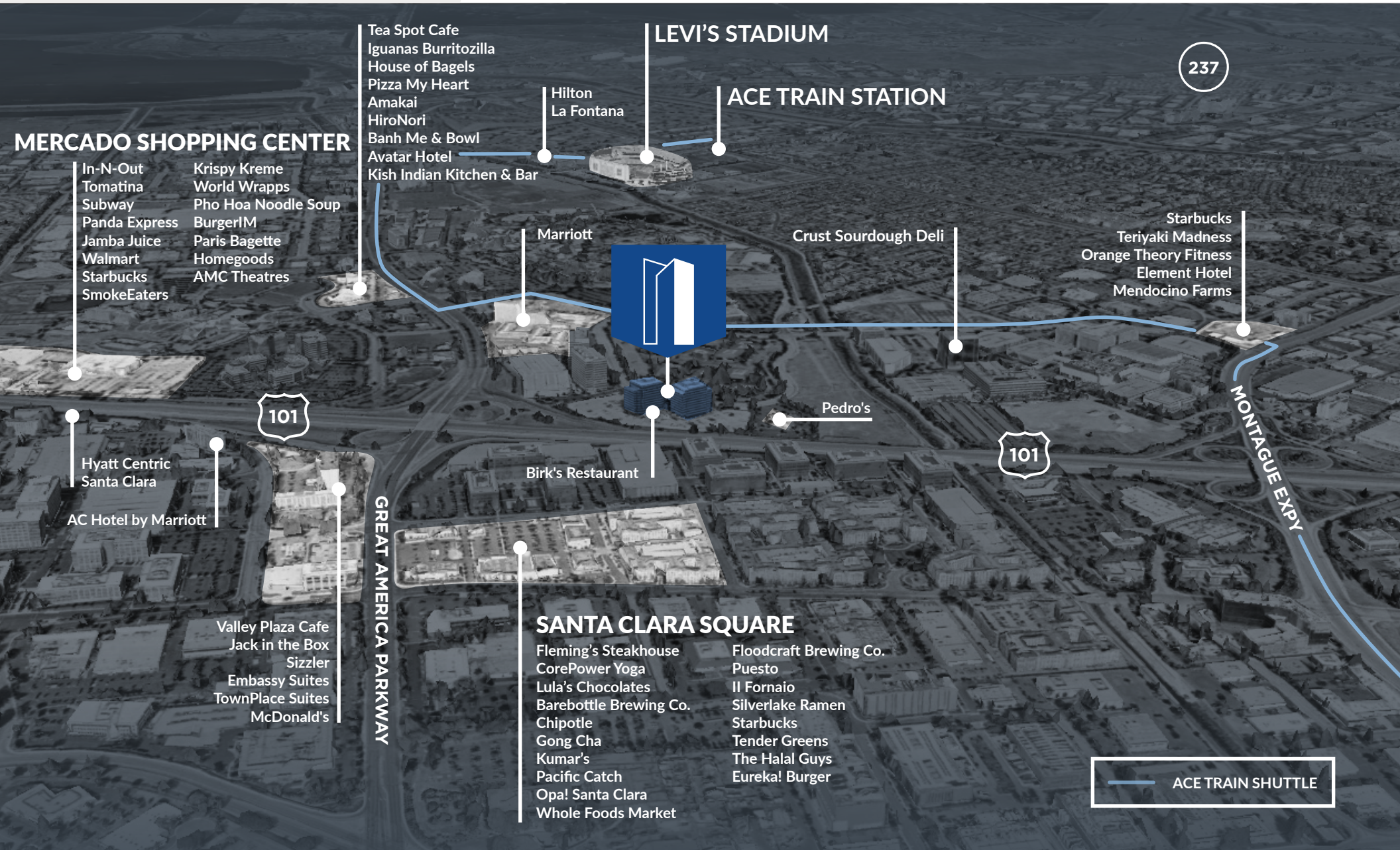
- › Full Floor Unit
- › 7 Offices
- › 7 Conference Rooms
- › 1 Board Room
- › 2 Phone Rooms
- › Break Room
- › 2 Private Balconies

TOWER 1 | 3945 FREEDOM CIRCLE

[BACK TO SUITE LIST](#) ▶



# AMENITIES



## MERCADO SHOPPING CENTER

- In-N-Out
- Tomatina
- Subway
- Panda Express
- Jamba Juice
- Walmart
- Starbucks
- SmokeEaters
- Krispy Kreme
- World Wrapps
- Pho Hoa Noodle Soup
- BurgerIM
- Paris Bagette
- Homegoods
- AMC Theatres

- Tea Spot Cafe
- Iguanas Burritozilla
- House of Bagels
- Pizza My Heart
- Amakai
- HiroNori
- Banh Me & Bowl
- Avatar Hotel
- Kish Indian Kitchen & Bar

## LEVI'S STADIUM

- Hilton
- La Fontana

## ACE TRAIN STATION

237

- Hyatt Centric
- Santa Clara

AC Hotel by Marriott

101

- Valley Plaza Cafe
- Jack in the Box
- Sizzler
- Embassy Suites
- TownPlace Suites
- McDonald's

GREAT AMERICA PARKWAY

Birk's Restaurant

## SANTA CLARA SQUARE

- Fleming's Steakhouse
- CorePower Yoga
- Lula's Chocolates
- Barebottle Brewing Co.
- Chipotle
- Gong Cha
- Kumar's
- Pacific Catch
- Opa! Santa Clara
- Whole Foods Market
- Floodcraft Brewing Co.
- Puesto
- Il Fornaio
- Silverlake Ramen
- Starbucks
- Tender Greens
- The Halal Guys
- Eureka! Burger

Crust Sourdough Deli

Pedro's

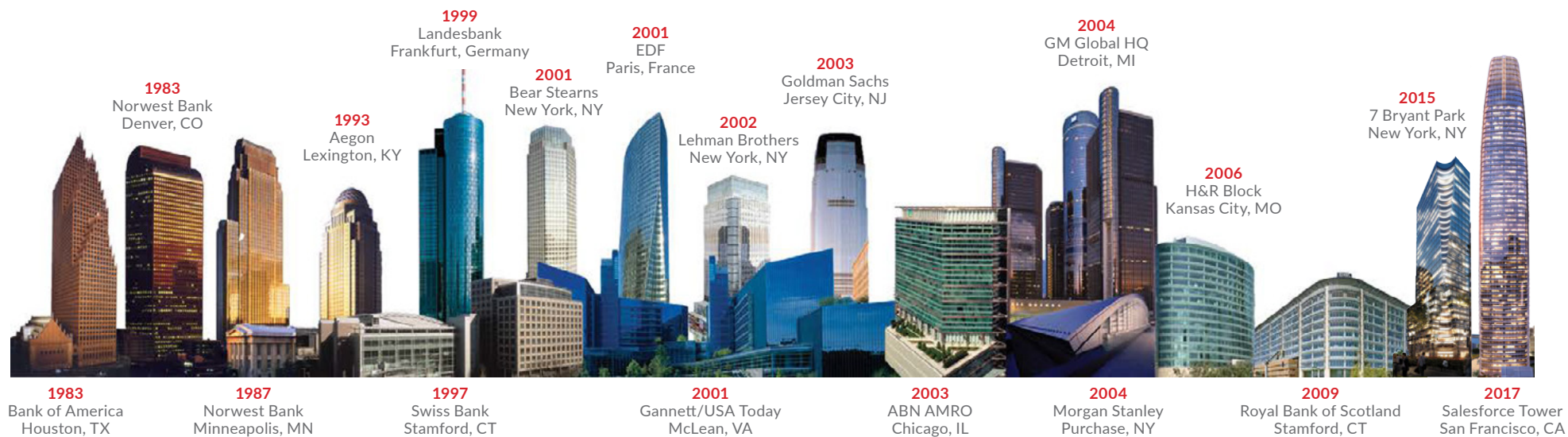
101

- Starbucks
- Teriyaki Madness
- Orange Theory Fitness
- Element Hotel
- Mendocino Farms

MONTAGUE EXPY

ACE TRAIN SHUTTLE

# ABOUT US



## Hines

Hines is a privately owned real estate firm involved in real estate investment, development and property management worldwide. The firm's historical and current portfolio of projects that are underway, completed, acquired and managed includes 1,208 properties representing more than 488 million square feet of office, residential, mixed-use, industrial, hotel, medical and sports facilities, as well as large, master-planned communities and land developments.



Cushman & Wakefield is a global leader in commercial real estate services, helping clients transform the way people work, shop, and live. The firm's 53,000 employees in more than 60 countries provide deep local and global insights that create significant value for occupiers and investors around the world. Cushman & Wakefield is among the largest commercial real estate services firms with revenues of \$8.8 billion across core services of agency leasing, asset services, capital markets, facility services (branded C&W Services), global occupier services, investment management (branded DTZ Investors), project & development services, tenant representation and valuation & advisory. To learn more, visit [www.cushmanwakefield.com](http://www.cushmanwakefield.com) or follow @CushWake on Twitter.



SANTA  
CLARA  
TOWERS

# TOWER 1 | 3945 FREEDOM CIRCLE

[santaclaratowers.com](http://santaclaratowers.com)

**COLIN FEICHTMEIR**

+1 408 615 3443

colin.feichtmeir@cushwake.com

Lic. #01298061

**SCOTT DEVER**

+1 408 615 3457

scott.dever@cushwake.com

Lic. #01890552

**KELLY YODER**

+1 408 615 3427

kelly.yoder@cushwake.com

Lic. #01821117

**STEVE HORTON**

+1 408 615 3412

steve.horton@cushwake.com

Lic. #01127340