



FOR LEASE

275 ENGLISH DRIVE

MONCTON, NB | 2,875 SF

PROPERTY HIGHLIGHTS

Located in the **Moncton Industrial Park**, 275 English Drive presents a functional space suitable for warehouse, office, service commercial, or light industrial uses, making it ideal for various business operations.

With its practical layout and adaptable interior configuration, this property provides operational flexibility and supports long-term business growth.

- Well-positioned commercial/industrial asset.
- Functional layout **adaptable** to multiple business uses.
- The property includes an office space, a spacious prep. area, a staff room and a warehouse.
- **On-site parking** and circulation area.
- Strong accessibility within Moncton.

NB133909

MLS

\$15.00 PSF NET

LEASE RATE

2,874 SF

BUILDING SIZE

IP - INDUSTRIAL PARK ZONE

ZONING





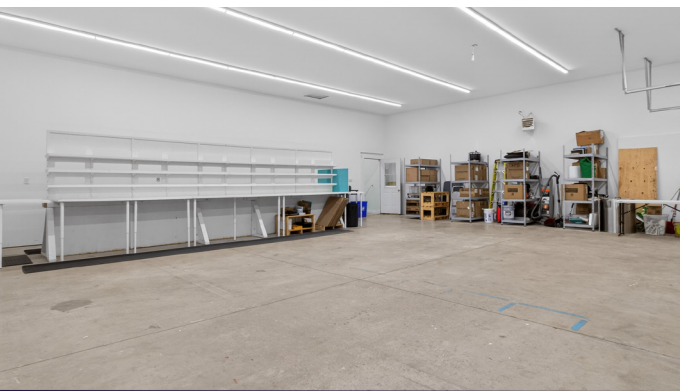
PREP. AREA



OFFICE



PREP. AREA



WAREHOUSE



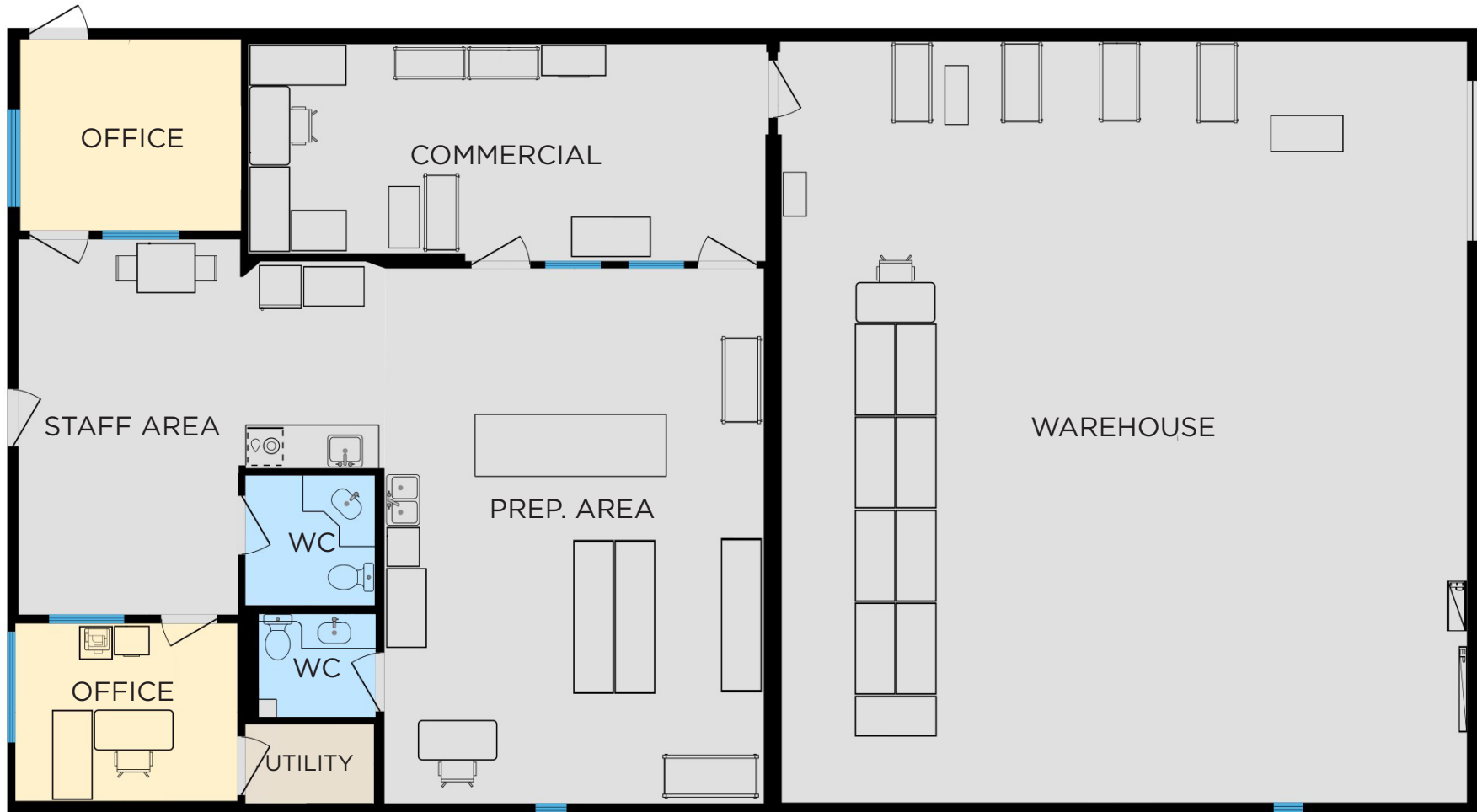
WAREHOUSE

LOCATION MAP

Located in the Moncton Industrial Park, this property offers easy access to major transportation corridors, including Wheeler Boulevard, St. George Boulevard, and other key arterial routes.



FLOOR PLAN



3D VIRTUAL TOUR



JAMIE SMITH

Senior Associate

+1 506 269 9914

jsmith@cwatlantic.com

©2026 Cushman & Wakefield. All rights reserved. The information contained in this communication is strictly confidential. This information has been obtained from sources believed to be reliable but has not been verified. NO WARRANTY OR REPRESENTATION, EXPRESS OR IMPLIED, IS MADE AS TO THE CONDITION OF THE PROPERTY (OR PROPERTIES) REFERENCED HEREIN OR AS TO THE ACCURACY OR COMPLETENESS OF THE INFORMATION CONTAINED HEREIN, AND SAME IS SUBMITTED SUBJECT TO ERRORS, OMISSIONS, CHANGE OF PRICE, RENTAL OR OTHER CONDITIONS, WITHDRAWAL WITHOUT NOTICE, AND TO ANY SPECIAL LISTING CONDITIONS IMPOSED BY THE PROPERTY OWNER(S). ANY PROJECTIONS, OPINIONS OR ESTIMATES ARE SUBJECT TO UNCERTAINTY AND DO NOT SIGNIFY CURRENT OR FUTURE PROPERTY PERFORMANCE.

