

FOR SUBLEASE

777 E. Eisenhower

Ann Arbor, MI



9,725 SF
AVAILABLE



PROPERTY FEATURES



SUITE 950 FEATURES



MOVE-IN READY WITH MODERN DESIGN AND FURNISHINGS



MULTIPLE PRIVATE OFFICES AND CONFERENCE ROOMS



COLLABORATIVE OPEN WORKSPACE LAYOUT



LARGE KITCHEN AND BREAKROOM IDEAL FOR TEAMS



SUBLEASE THROUGH AUGUST 2027 WITH POSSIBILITY FOR LONG TERM DIRECT LEASE



LEASE RATE = \$29/SF GROSS

BUILDING AMENITIES



24/7 SECURITY

ON-SITE MANAGEMENT



PROXIMITY TO I-94

NEAR RESTAURANT, SHOPS, & MALL



ON-SITE COFFEE SHOP

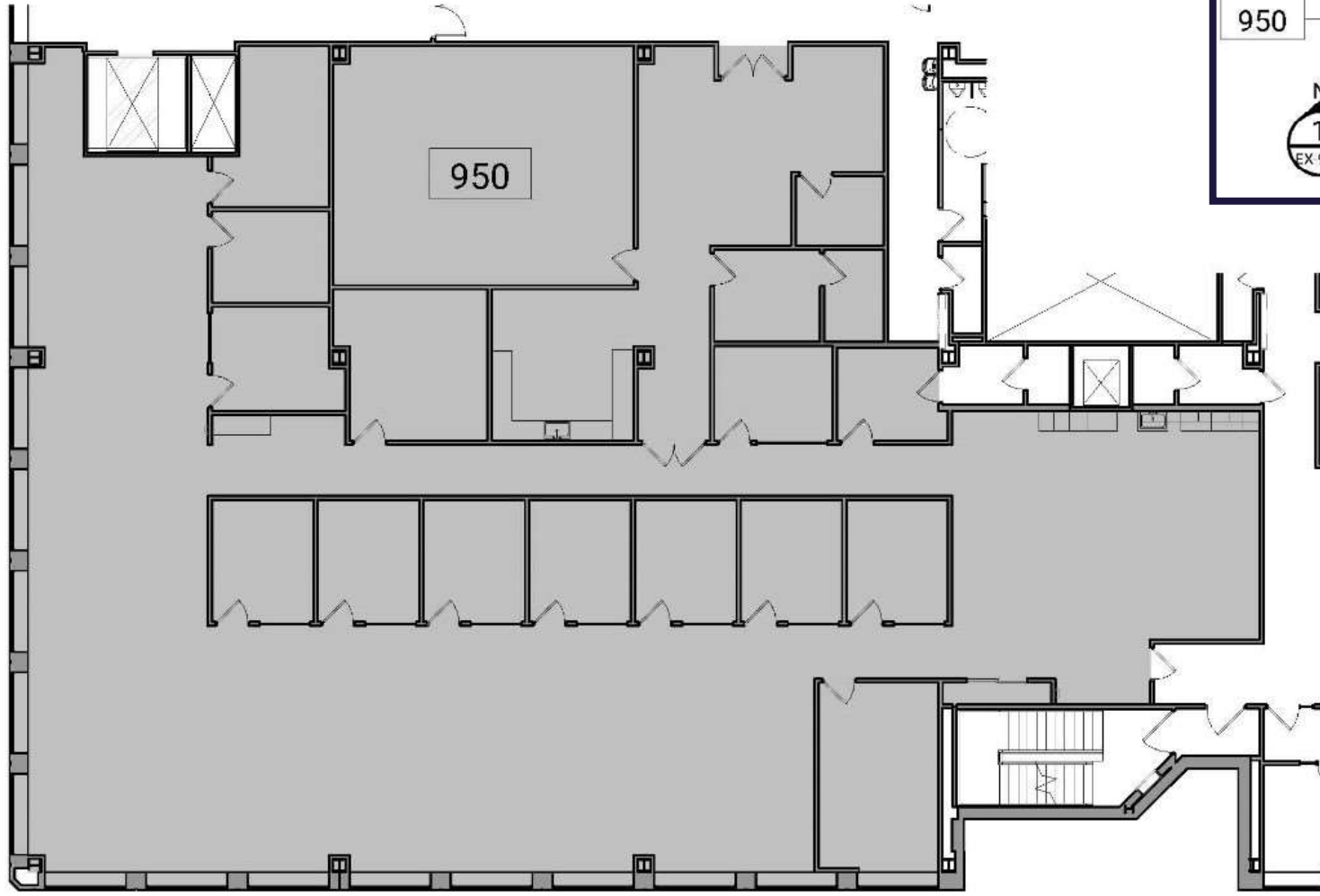
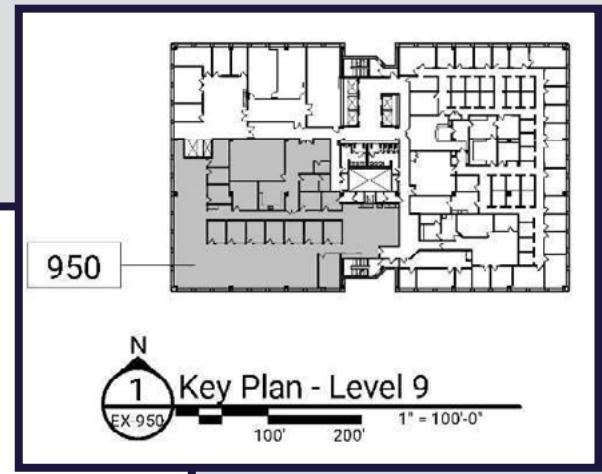
SWEETWATERS COFFEE & TEA



ON-SITE RESTAURANT

SHAWARMA SHOP & BAKERY

SUITE 950 FLOOR PLAN



N
2
EX-950

Suite 950 - Partial Level 9 Existing Floor Plan

10' 20' 40' 1" = 20'-0"

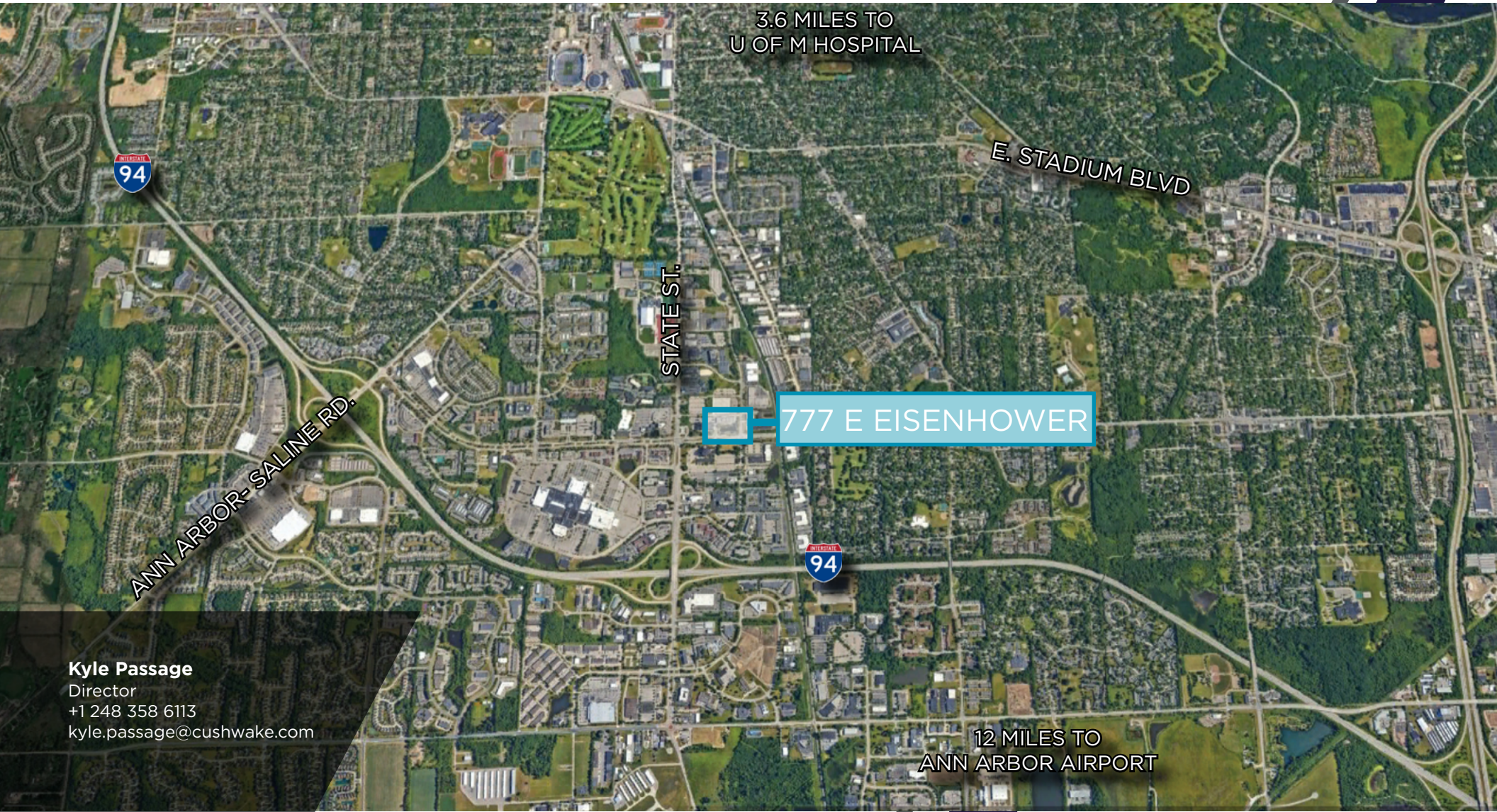
This caption is located at the bottom left of the main floor plan. It includes a north arrow with the number '2' inside a circle, the label 'EX-950' below it, the title 'Suite 950 - Partial Level 9 Existing Floor Plan', and a scale bar with markings for 10, 20, and 40 feet, followed by the text '1" = 20'-0"'. A horizontal line is drawn below the title.

SUITE 950 PHOTOGRAPHY



SUITE 950 PHOTOGRAPHY





Kyle Passage
Director
+1 248 358 6113
kyle.passage@cushwake.com