



FOREMAN RD

FM 1006

FOR SALE
±88 ACRES NEAR
ORANGE REFINERY COMPLEX

FOREMAN RD & FM 1006

ORANGE, TX 77630

DAVID MUNSON, SIOR
Executive Managing Director
Direct: +1 713 913 5473
Mobile: +1 832 545 8204
david.munson@cushwake.com

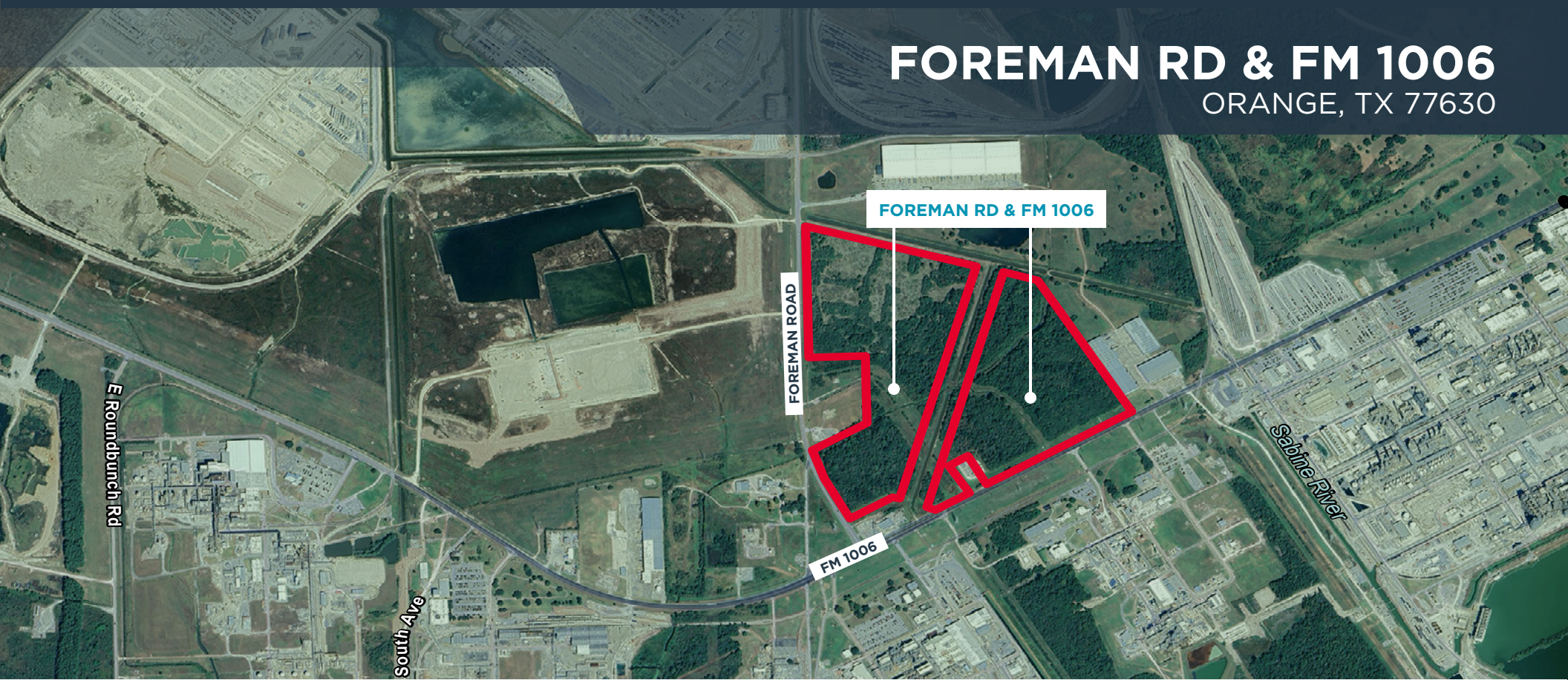
GARRETT THOMAS
Director
Direct: +1 713 260 0244
Mobile: +1 318 581 7695
garrett.thomas@cushwake.com



**CUSHMAN &
WAKEFIELD**

FOREMAN RD & FM 1006

ORANGE, TX 77630



PROPERTY DETAILS

LOCATION/ADDRESS

Foreman Rd & FM 1006
Orange, TX 77630

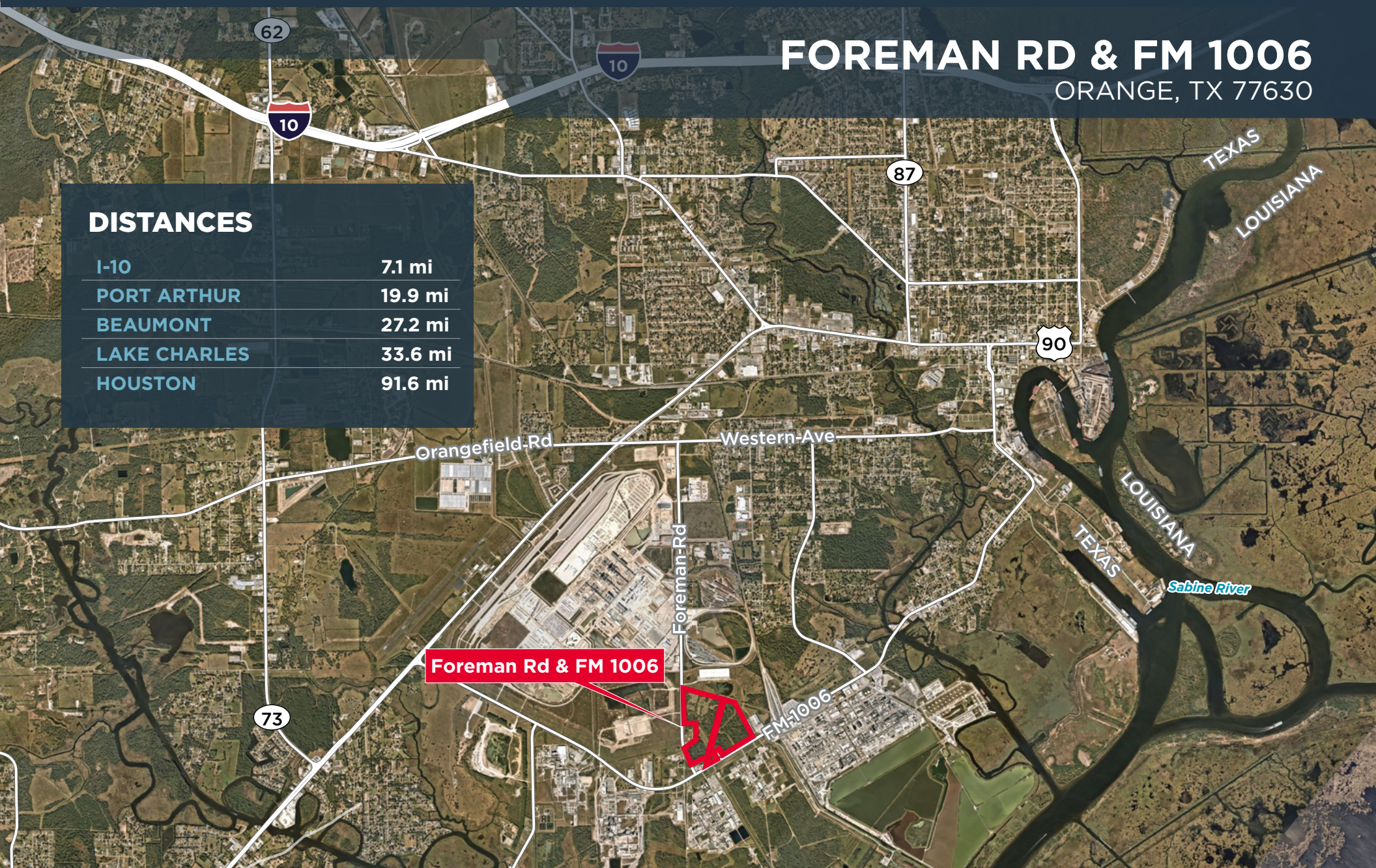
- ±88 Acres (divisible)
- Multiple Product Lines in Immediate Proximity
- Heavy Industrial Area
- Robust Utilities: Entergy, Sabine River Authority
- Close Rail & Vessel Transload Access
- 3 Miles from Port Orange

FOREMAN RD & FM 1006

ORANGE, TX 77630

DISTANCES

I-10	7.1 mi
PORT ARTHUR	19.9 mi
BEAUMONT	27.2 mi
LAKE CHARLES	33.6 mi
HOUSTON	91.6 mi



For more information, please contact

DAVID MUNSON, SIOR

Executive Managing Director

Direct: +1 713 913 5473

Mobile: +1 832 545 8204

david.munson@cushwake.com

GARRETT THOMAS

Director

Direct: +1 713 260 0244

Mobile: +1 318 581 7695

garrett.thomas@cushwake.com



**CUSHMAN &
WAKEFIELD**

1330 Post Oak Blvd., Houston, TX 77056

+1 713 877 1700

cushmanwakefield.com

©2026 Cushman & Wakefield. All rights reserved. The information contained in this communication is strictly confidential. This information has been obtained from sources believed to be reliable but has not been verified. NO WARRANTY OR REPRESENTATION, EXPRESS OR IMPLIED, IS MADE AS TO THE CONDITION OF THE PROPERTY (OR PROPERTIES) REFERENCED HEREIN OR AS TO THE ACCURACY OR COMPLETENESS OF THE INFORMATION CONTAINED HEREIN, AND SAME IS SUBMITTED SUBJECT TO ERRORS, OMISSIONS, CHANGE OF PRICE, RENTAL OR OTHER CONDITIONS, WITHDRAWAL WITHOUT NOTICE, AND TO ANY SPECIAL LISTING CONDITIONS IMPOSED BY THE PROPERTY OWNER(S). ANY PROJECTIONS, OPINIONS OR ESTIMATES ARE SUBJECT TO UNCERTAINTY AND DO NOT SIGNIFY CURRENT OR FUTURE PROPERTY PERFORMANCE.