

**ELEVATION
COUNTER**

**3C SECTION
COUNTER**

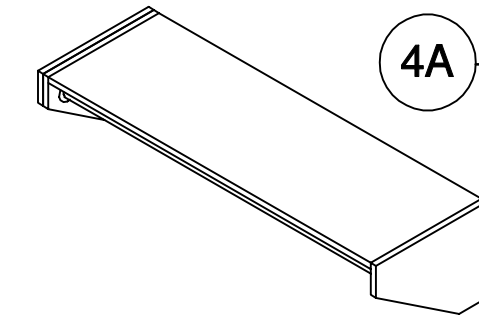
MILLWORK SPECIFICATIONS:

1. ALL CABINET COMPONENTS EXCEPT FOR THE COUNTER TOP TO BE 5/8" THICK MELAMINE FACED PARTICLE BOARD. FINISH TO BE PLAM. (OR EQUAL)
2. POSTFORMED COUNTERTOP WITH INTEGRAL 4" HIGH SPLASHBACK TO BE PLAM
3. CABINET HINGES TO BE FULLY ADJUSTABLE, HALF-OVERLAY TYPE, NOT VISIBLE WHEN DOORS ARE CLOSED.
4. CABINET PULLS TO BE 'D' TYPE, COMMERCIAL GRADE 4" CENTERS IN WHITE FINISH.
5. DRAWER SLIDES TO BE BALL BEARINGS WITH METAL RUNNERS
6. PILASTER STRIPS & SUPPORTS FOR ADJUSTABLE SHELVING TO BE KNAPE & VOGT NO. 225 OR EQUAL.

NOTE:
SUBMIT SAMPLES OF ALL MATERIALS AND HARDWARE PRIOR TO FABRICATION OF CABINETS.

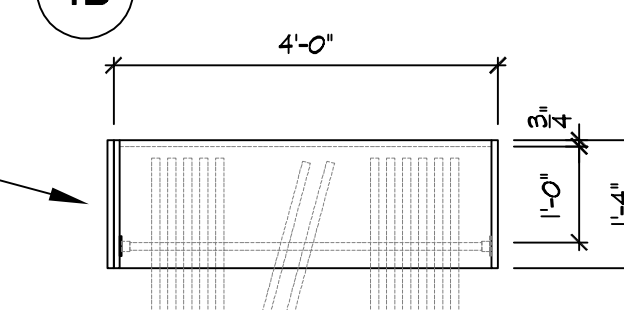
CLOSET POLE TO BE 1 1/8" DIA. CHROME TUBING, KNAPE & VOGT MODEL #660 COMPLETE WITH KNAPE & VOGT #134 FLANGES AT EACH END.

4A SECTION



4C ISOMETRIC VIEW

4B FRONT ELEVATION

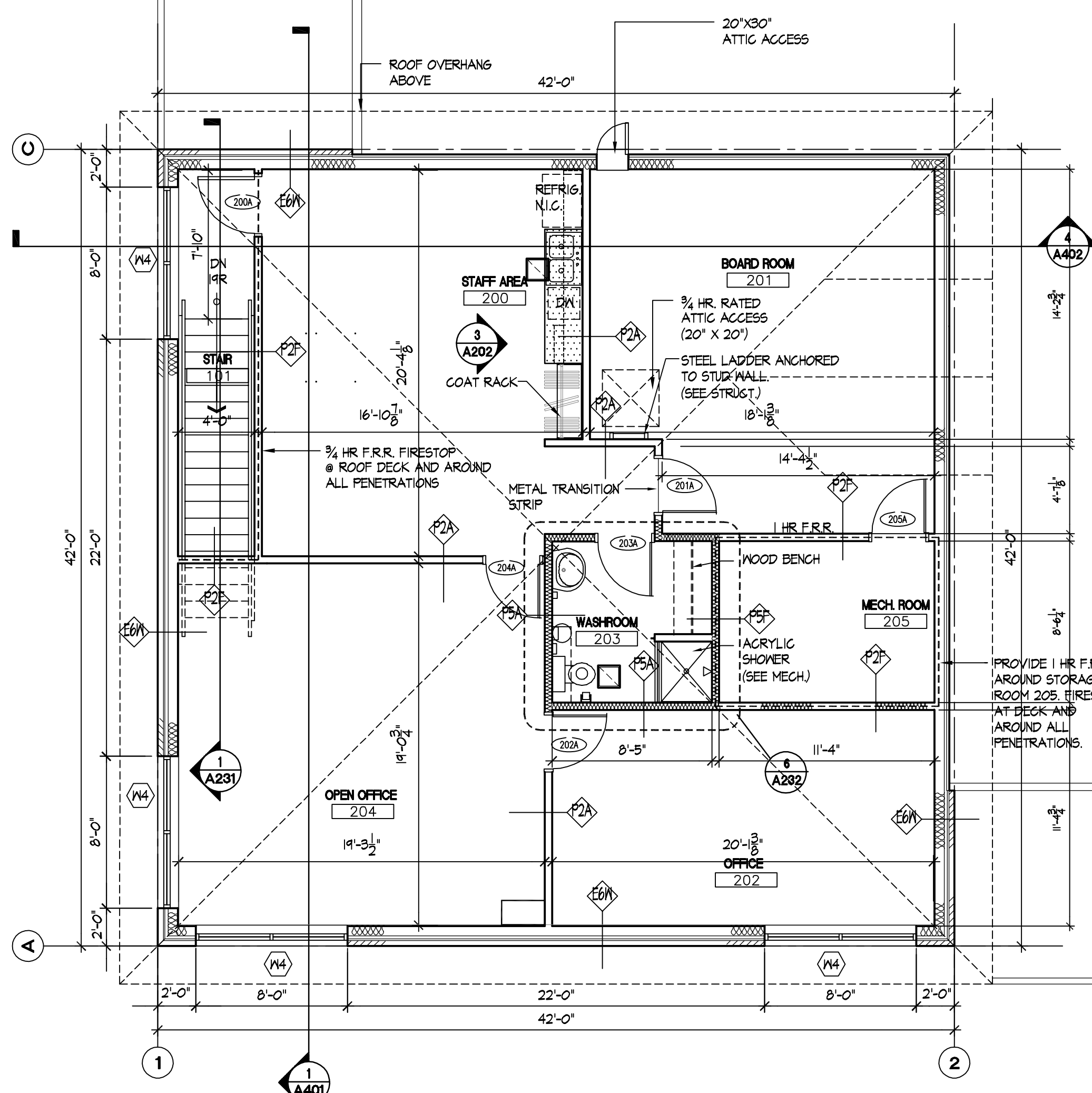


4D PLAN VIEW

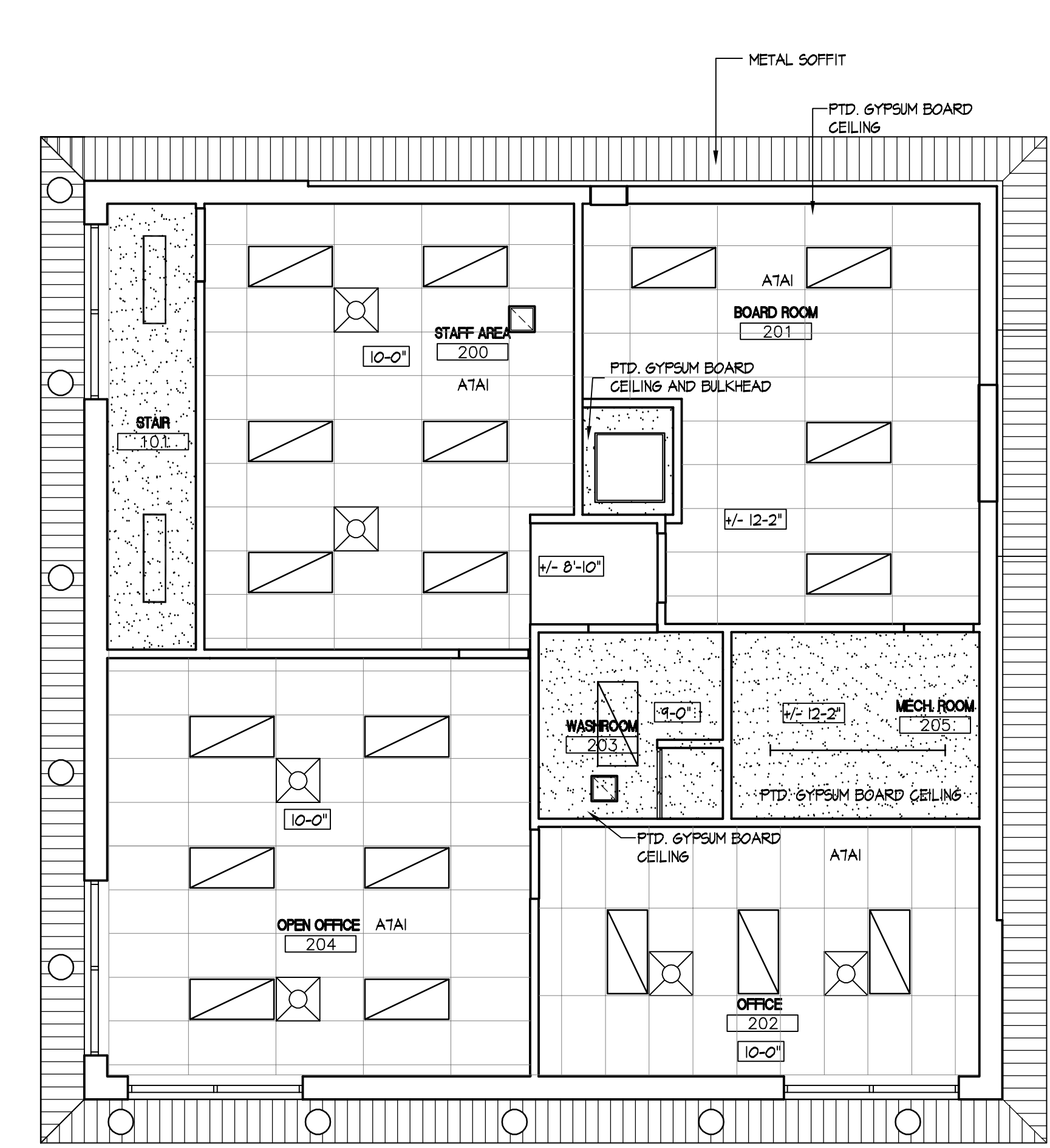
ALL MILLWORK COMPONENTS TO BE 3/4" THK. WHITE MELAMINE PANELS.

**8 STAFFROOM MILLWORK DETAILS
A202 1/2"=1'-0"**

**4 STAFFROOM COAT RACK DETAILS
A202 1/2"=1'-0"**

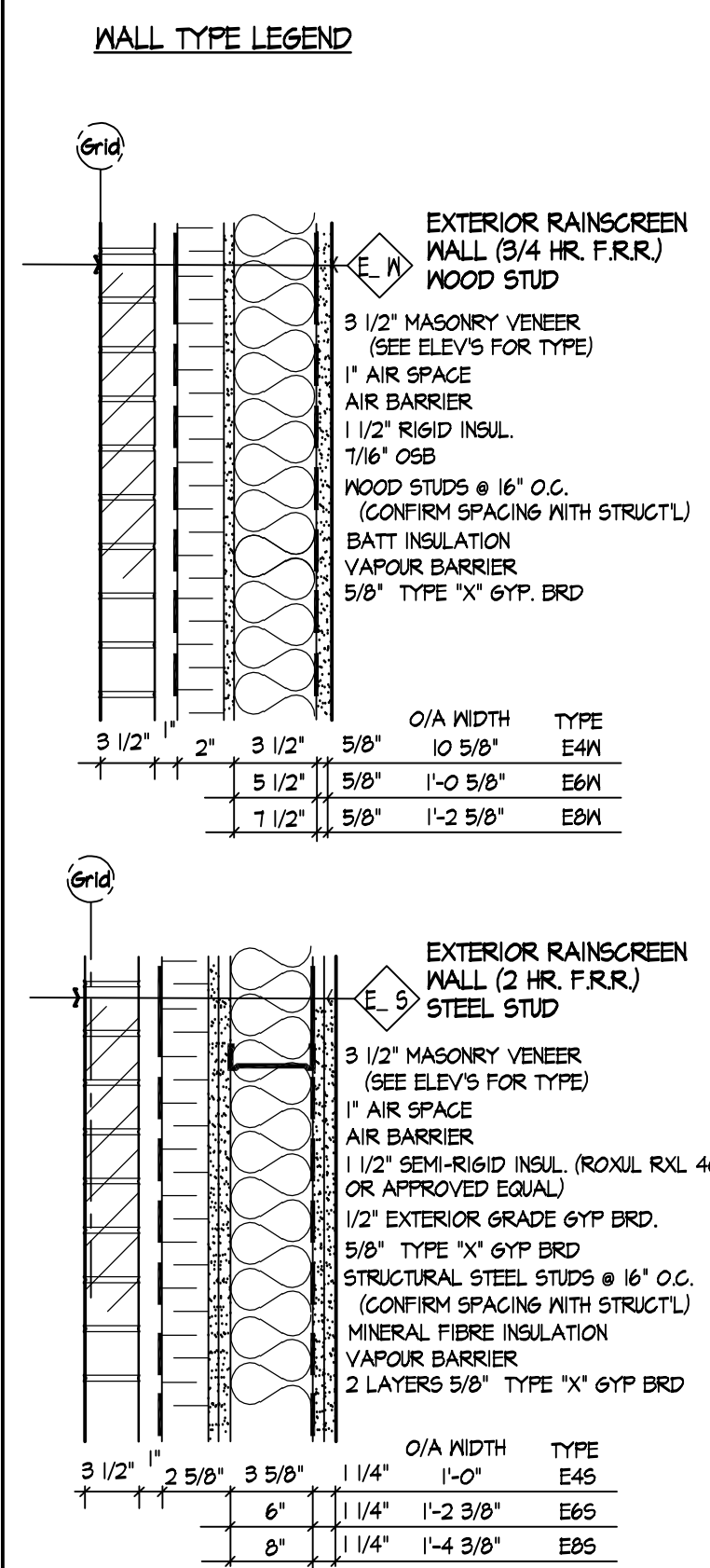


**1 SECOND FLOOR PLAN
A202 3/16"=1'-0"**

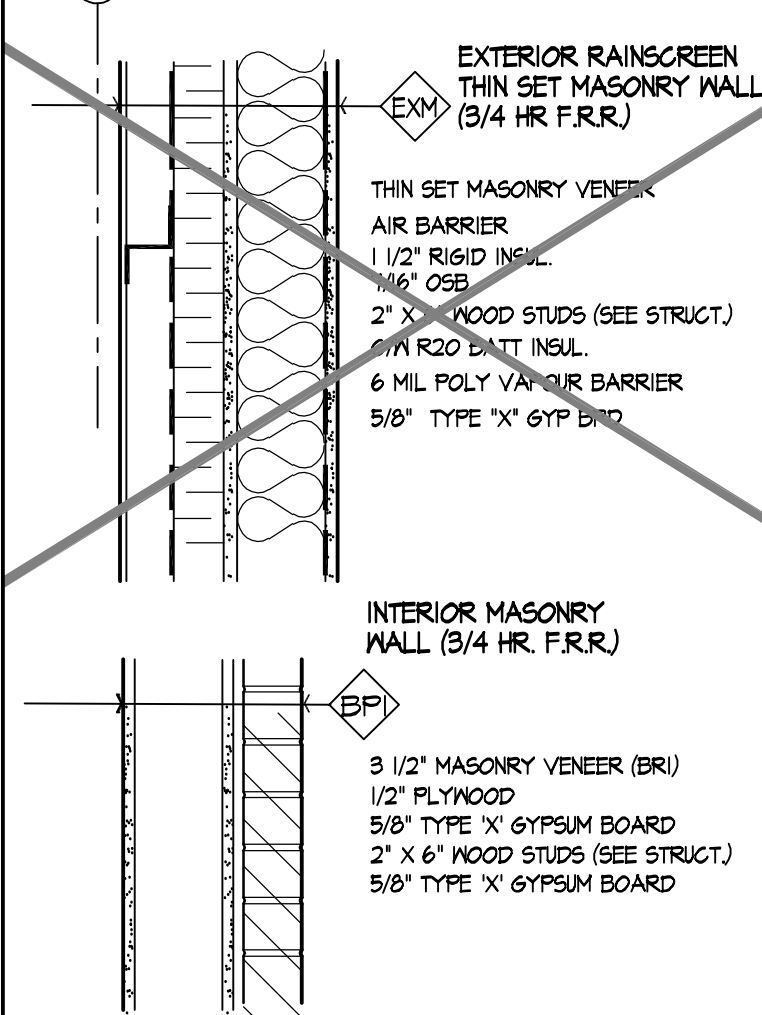


NOTE: CONFIRM LIGHTING AND DIFFUSER LOCATIONS WITH MECH / ELEC. DWG'S.

**4 SECOND FLOOR REFLECTED CEILING PLAN
A202 3/16"=1'-0"**



- GYPSUM BOARD PARTITIONS**
- GYPSUM BOARD TYPE**
- A= 1/2" (1/2") GYPSUM BOARD
 - B= 1/2" (5/8") GYPSUM BOARD
 - C= 2 LAYERS 1/2" (1/2") GYPSUM BOARD
 - D= 2 LAYERS 1/2" (5/8") GYPSUM BOARD
 - E= 1/2" TYPE 'X' GYPSUM BOARD
 - F= 1/2" (5/8") TYPE 'X' GYPSUM BOARD
 - G= 1/2" (3/4") TYPE 'X' GYPSUM BOARD
 - H= 2 LAYERS 1/2" TYPE 'X' GYPSUM BRD
 - J= 2 LAYERS 1/2" (5/8") TYPE 'X' GYPSUM BRD
 - K= 2 LAYERS 1/2" (3/4") TYPE 'X' GYPSUM BRD
 - L= 0.05" THK FRP PANELS ON (1/2") GYP BRD
- (SAME DRYWALL BOTH SIDES OF STUD UNLESS NOTED IS: F2AB. CALK WALLS TOP & BOTTOM)
- FRAMING/ACOUSTICS**
- 1= 64 (2 1/2") METAL STUD
 - 2= 42 (3 5/8") METAL STUD
 - 3= 1/2" (6") STEEL STUD
 - 4= 64 (2 1/2") METAL STUD, 41 ACOUSTIC BLANKET
 - 5= 42 (3 5/8") METAL STUD, 41 ACOUSTIC BATT
 - 6= 1/2" (6") STEEL STUD, 41 ACOUSTIC BATT
 - 7= 64 (2 1/2") METAL STUD, 41 MINERAL FIBRE BATT
 - 8= 2" X 6" WOOD STUDS (C/N BATT INSUL.)
 - 9= 6 MIL POLY VAPOUR BARRIER FOR COOLER WALLS
 - 10= 2" X 6" WOOD STUDS (C/N BATT INSUL.)
 - 11= 6 MIL POLY VAPOUR BARRIER FOR COOLER WALLS
- (STUDS AT 400 (16") O.C. UNLESS NOTED)
- F2A= 1/2" (1/2") GYPSUM BOARD BOTH SIDES OF 3 5/8" METAL STUDS
 - F2B= 1/2" (5/8") GYPSUM BOARD ONE SIDE, 5/8" GYPSUM BOARD THE OTHER SIDE OF 3 5/8" METAL STUDS



NOTE: NOT ALL WALL TYPES MAY BE USED ALL WALLS EXTEND TO 1/5 OF DECK UNLESS NOTED OTHERWISE. ALL EXTERIOR WALLS TO BE MIN 3/4 HR. F.R.R. FOR ROOF SUPPORT

All measurements to be checked by the Contractor on the job. Construction sets have original consultant stamp and signature represented in it are protected by copyright. Check scale, print may be reduced.

1 AUG 6/04 - ISSUED FOR PERMIT
2 SEPT 28/04 - ISSUED FOR TENDER

philip agar architect inc.
265 piccadilly street, london, ontario n6a 1s3
telephone: 519 432-7368 facsimile: 519 432-2258

SECOND FLOOR PLAN
SUNRISE MARKET
744 ADELAIDE STREET NORTH
LONDON, ONTARIO

Project No: 0181
Scale: AS NOTED
Dwnr/Chkd. By: DH/PA
Date: AUG 15/04

Dwg. No:

A202