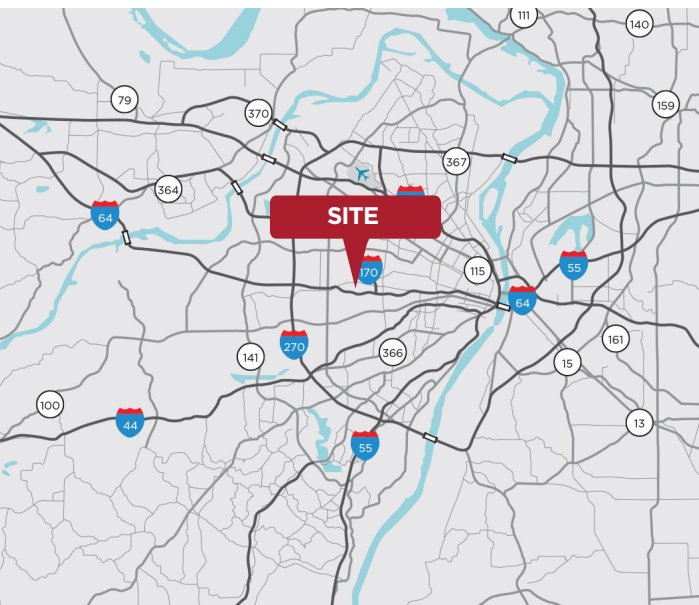


7,945 SF AVAILABLE FOR LEASE

AVAILABLE 7/1/2026

11493 PAGE SERVICE DRIVE
ST. LOUIS, MO 63146



PROPERTY HIGHLIGHTS

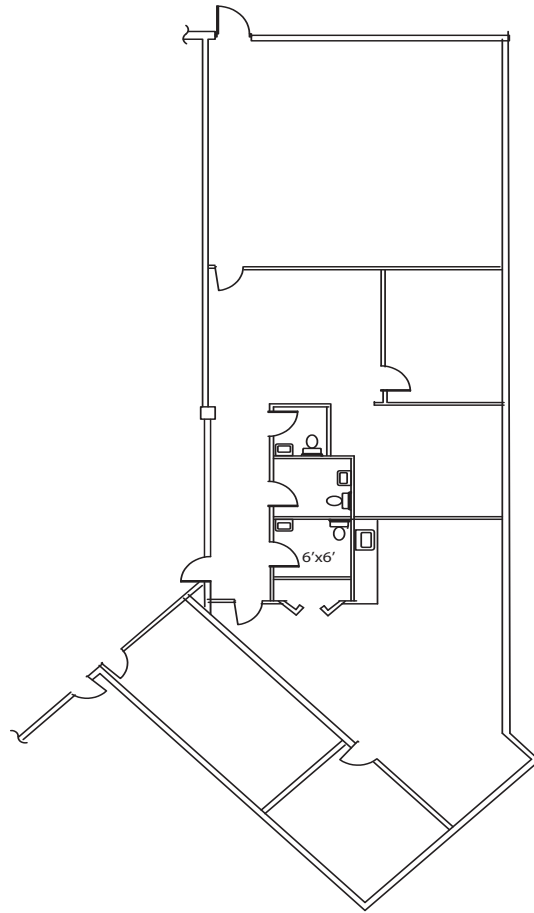
Total Building Area:	35,594 SF
Total Available Area:	7,945 SF
Office Area:	7,150 SF
Clear Height:	16'
Loading:	2 Docks
Column Spacing:	33' x 30'
Parking Ratio:	2.78/1,000
Lease Rate:	\$11.75/SF NNN

CONTACT

MATT EASTIN, SIOR, CCIM
Executive Director
314 746 0350
matt.eastin@cushwake.com

ED LAMPITT, SIOR, CCIM
Vice Chair
314 746 0383
ed.lampitt@cushwake.com

FLOOR PLAN



AERIAL



CONTACT

MATT EASTIN, SIOR, CCIM
Executive Director
314 746 0350
matt.eastin@cushwake.com

ED LAMPITT, SIOR, CCIM
Vice Chair
314 746 0383
ed.lampitt@cushwake.com

