

ATRIA WEST

ATRIAWEST.COM



WEST LOS ANGELES

WHERE CREATIVITY CONVERGES



 CUSHMAN & WAKEFIELD

 onni[®]
group



THE PROJECT

BUILDING FEATURES

- High ceilings, balconies, and floor to ceiling windows throughout
- Stunning three-story glass atriums provide maximum natural light
- Prominent signage opportunity along Santa Monica Boulevard
- Superior parking ratio of up to 3/1000
- Tenant gym, locker rooms, lounge and conference center
- First class, highly capitalized ownership and attentive on-site property management



ATRIA WEST

Ideally situated in the heart of West Los Angeles, Atria West draws companies from every industry that gives the city its pulse.

Entertainment, film, television, architectural, digital media, legal, financial and humanitarian firms all come together creating a vibrant work environment.

The institutional ownership makes Atria West a safe bet for tenants seeking reliable, stable and first class property owners.

ATRIA WEST

LEGEND

RESTAURANTS	RETAIL
1 Hinoki & the Bird	9 Frank's Wine & Spirits
2 Phill West Bar & Grill	10 UPS Customer Center
3 La Brushetta	11 Walgreens
4 The Coffee Bean & Tea Leaf	SERVICES
5 Carmine's Restaurant & Bar	12 Chase Bank
6 McDonalds	13 Sparta Academy
7 The Room Sushi Bar	14 Kimpton Hotel Palomar
	15 Vinita's Beauty and Threading Studio



Westfield
CENTURY CITY

85° Bakery Cafe	Jo Malone London	Shake shack
Adidas	Kate Space New York	Shoe lab
Aesop	Kieh'l's	Skechers
Aldo	La Columbe	SKIN FIVE
All Saints	Lacoste	Steve Madden
Anthropologie	Leaf Waffles	Sugarfina
Asicas	L'occitane en Provence	Swarovski
Aveda	Lorna Jane	Sweetgreen
Banana Republic	Lululemon	Ted Baker
Blue Bottle Coffee	LUSH Handmade	Tendergreens
Brandini Toffee	Cosmetics	Terra
Calmist	M.A.C. Cosmetics	Tesla Motors
Caudalie	Madewell	The Body Shop
Chick-fil-A	Malin + Goetz	The Container Store
Cole Haan	Michael Kors	Tiffany & Co.
COS	Nordstrom	Tory Burch
Finish Line	NYX Professional	Travis Mathew
Free People	Makeup	UNTUCKit
Healthy Spot	Old Navy	Urban Decay
H&M	Pressed Juicery	Vans
Honey Birdette	Randy's Donuts	Volcom
J. Crew	R.M. Williams	Warby Parker
John Hardy	Rock House Sliders	Wolf & Shepherd
Johnston & Murphy	Saint Marc	Zadig et Voltaire
John Varvatos	Samsonite	Zara
Joie	Sephora	Ziba Beauty

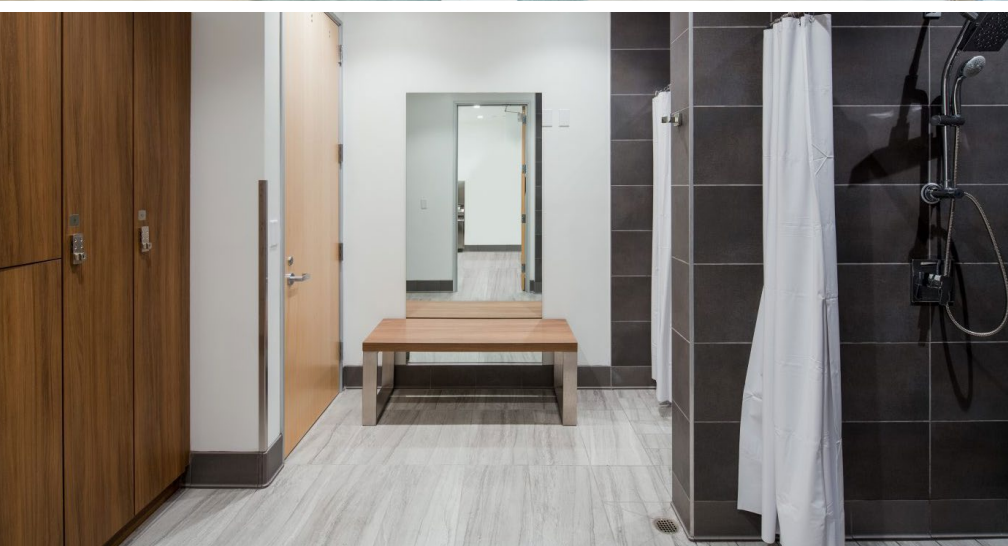
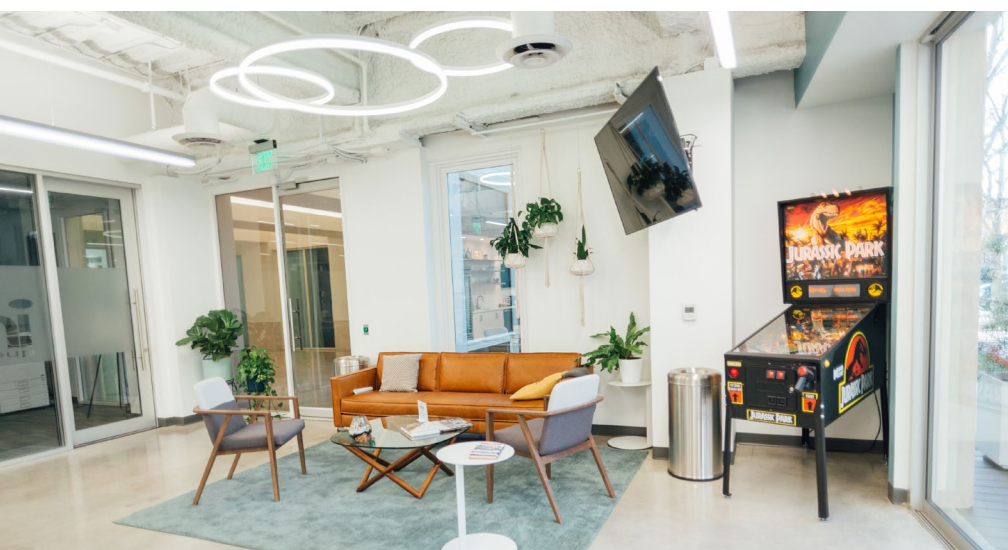


LOCATION

Ideally located in the heart of West Los Angeles, Atria West is equidistant to Century City, Westwood and Beverly Hills.

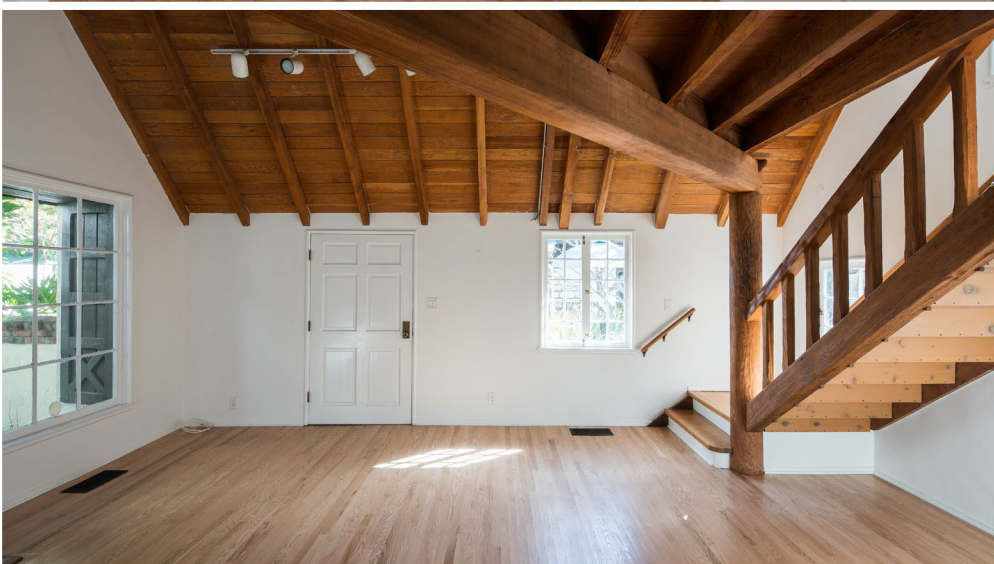
Santa Monica is also a few miles away, along with its airports and beaches. 405 Freeway access just minutes along the recently completed and renovated Santa Monica Boulevard corridor, along with a myriad of amenities.

ATRIA WEST



**ATRIA WEST HAS CENTURY CITY'S
NEWEST AMENITY CENTER**

GROVE COTTAGES @ ATRIA WEST



AVAILABILITY

GROVE COTTAGES
10669-10685 SANTA MONICA BLVD

ADDRESS	RSF	DESCRIPTION
10681 Santa Monica Blvd	1,363 SF	Open work space, 2 offices, private restroom and restaurant sized kitchen. Suite can be converted to solely creative office or function as a restaurant.

ATRIA WEST



AVAILABILITY

WEST BUILDING

10635 SANTA MONICA BLVD

SUITE	RSF	DESCRIPTION
115	1,849	Brand new spec suite with 2 glass enclosed office/meeting rooms, open kitchen, workspace, exposed ceiling and creative finishes
145	5306	Move-in ready suite consisting of 6 offices, 2 conference rooms, receptionist area, kitchenette, and open work area.
160	1,530	Move-in ready suite consisting of 3 window lined offices, 1 conference room, storage space, receptionist area, and kitchenette
170	2,467	2 offices, 2 conference rooms, receptionist area, break room, and open work area

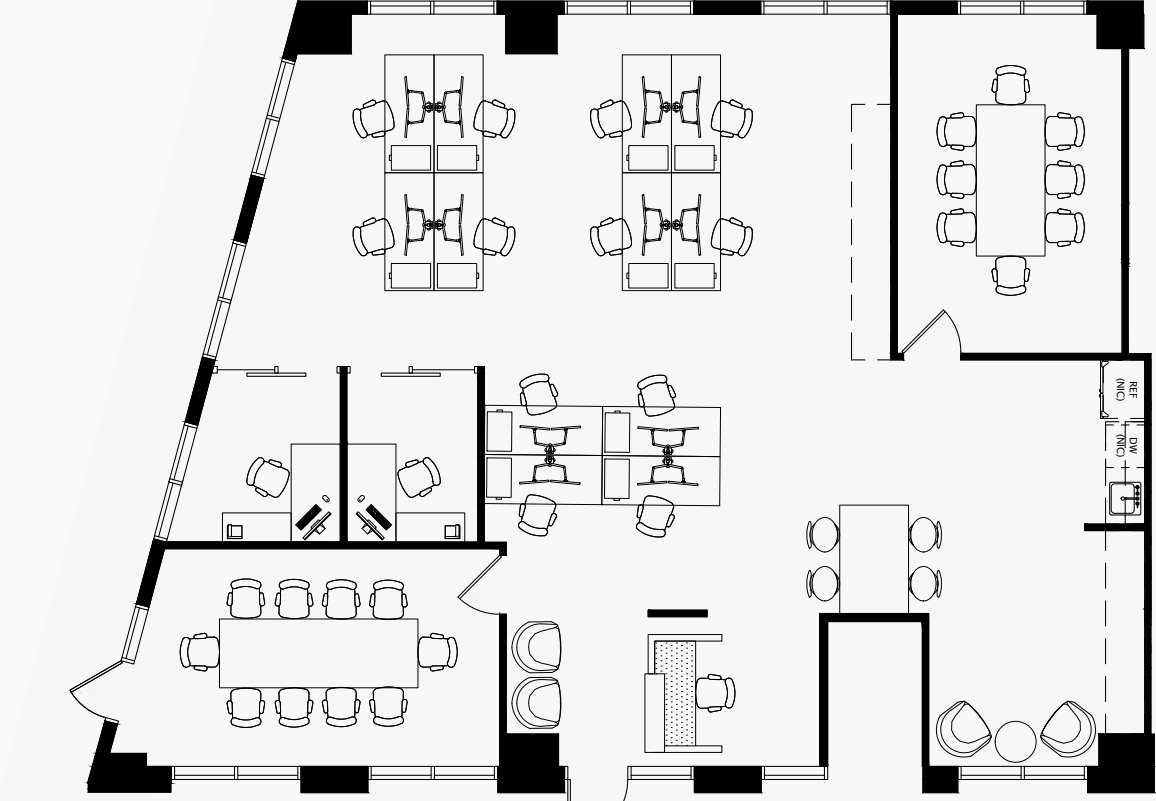
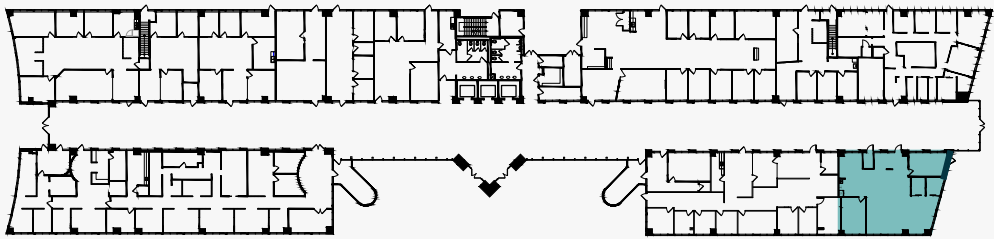
ATRIA WEST

SUITE 170 RSF 2,467

AS-BUILT CONFIGURATION

OFFICES.....	2
RECEPTION.....	1
CONFERENCE ROOMS.....	2
KITCHEN/BREAKOUT	1
OPEN WORK AREA.....	+/- 12

KEY PLAN



ATRIA WEST

FOR MORE INFORMATION,
PLEASE CONTACT:

JOSH BERNSTEIN | 310.795.5947
JOSH.BERNSTEIN@CUSHWAKE.COM
LIC 01828093

PETE COLLINS | 310.595.2227
PETER.COLLINS@CUSHWAKE.COM
LIC 01813645

SCOTT MENKUS | 310.595.2211
SCOTT.MENKUS@CUSHWAKE.COM
LIC 01476553



VIEW SITE SPECIFIC
COVID - 19
PREVENTION PLAN

©2021 Cushman & Wakefield. All rights reserved. The information contained in this communication is strictly confidential. This information has been obtained from sources believed to be reliable but has not been verified. NO WARRANTY OR REPRESENTATION, EXPRESS OR IMPLIED, IS MADE AS TO THE CONDITION OF THE PROPERTY (OR PROPERTIES) REFERENCED HEREIN OR AS TO THE ACCURACY OR COMPLETENESS OF THE INFORMATION CONTAINED HEREIN, AND SAME IS SUBMITTED SUBJECT TO ERRORS, OMISSIONS, CHANGE OF PRICE, RENTAL OR OTHER CONDITIONS, WITHDRAWAL WITHOUT NOTICE, AND TO ANY SPECIAL LISTING CONDITIONS IMPOSED BY THE PROPERTY OWNER(S). ANY PROJECTIONS, OPINIONS OR ESTIMATES ARE SUBJECT TO UNCERTAINTY AND DO NOT SIGNIFY CURRENT OR FUTURE PROPERTY PERFORMANCE.



CUSHMAN &
WAKEFIELD

onni
group