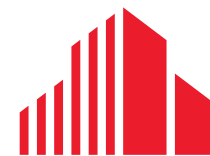




FOR SUBLEASE - 10,416 RSF

**4120 JURUPA STREET
ONTARIO, CA 91761**



**CUSHMAN &
WAKEFIELD**

4120 JURUPA STREET ONTARIO, CA 91761

Property Features

Space Details

Size:	Approximately 10,416 RSF
Availability:	Immediate
Term:	Through June 30, 2029
Rate:	Please contact broker
Tenant Improvements:	As-Is
FF&E:	Negotiable
Parking:	4 per 1,000 SF
Signage	One (1) eyebrow sign on the exterior of the Building above the doorway to the Premises



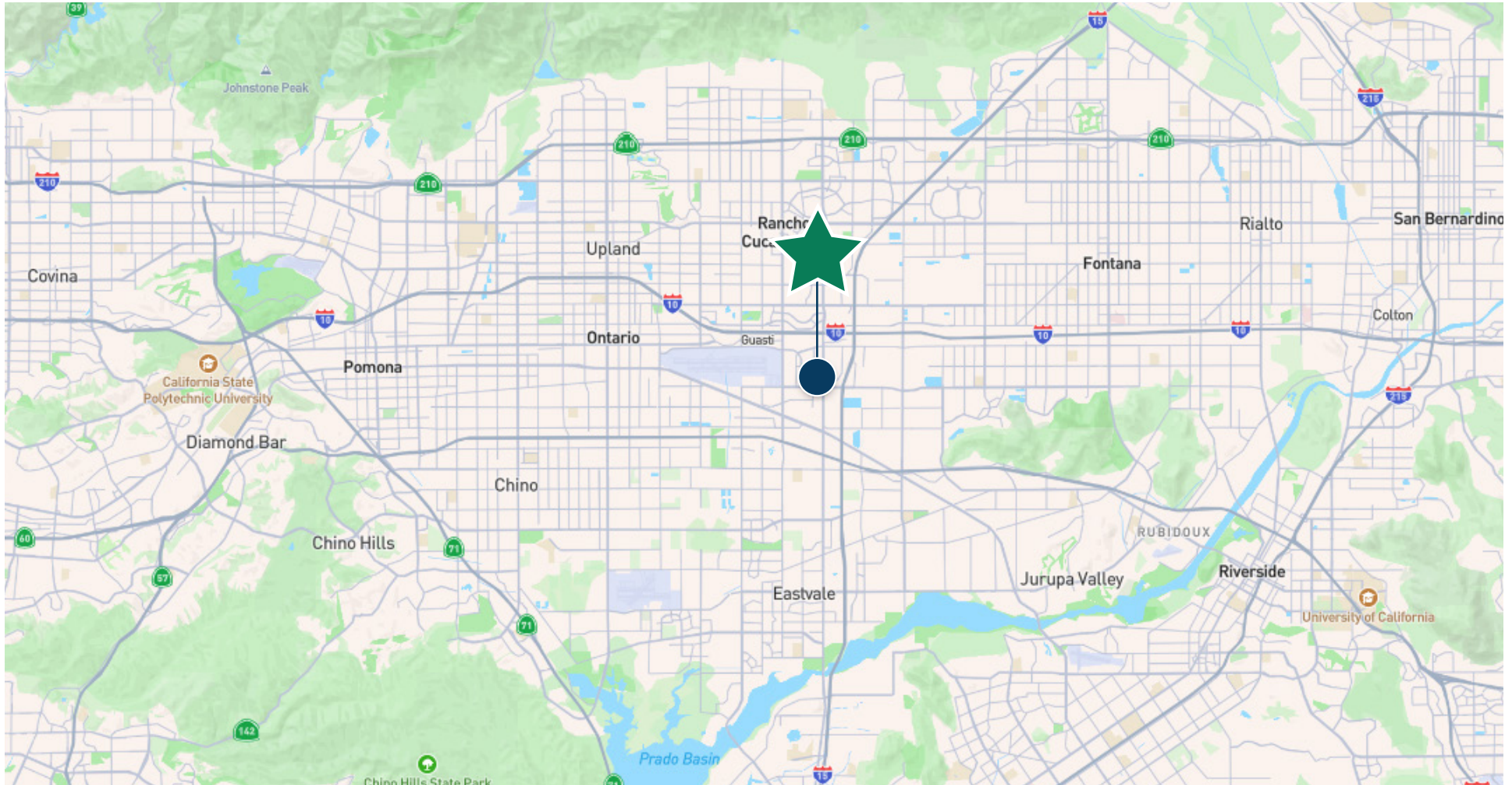
SEAN KERN
Senior Director
Direct: +1 909 942 4691
Mobile: +1 949 307 6625
Sean.Kern@cushwake.com

RYAN RUSSELL
Director
Direct: +1 909 942 4697
Mobile: +1 909 480 5244
Ryan.Russell@cushwake.com



**CUSHMAN &
WAKEFIELD**
Cushman & Wakefield
Of California, Inc.
901 Via Piemonte, Suite 200
Ontario, CA 91764
Lic. #00616335

4120 JURUPA STREET ONTARIO, CA 91761



SEAN KERN

Senior Director
Direct: +1 909 942 4691
Mobile: +1 949 307 6625
Sean.Kern@cushwake.com

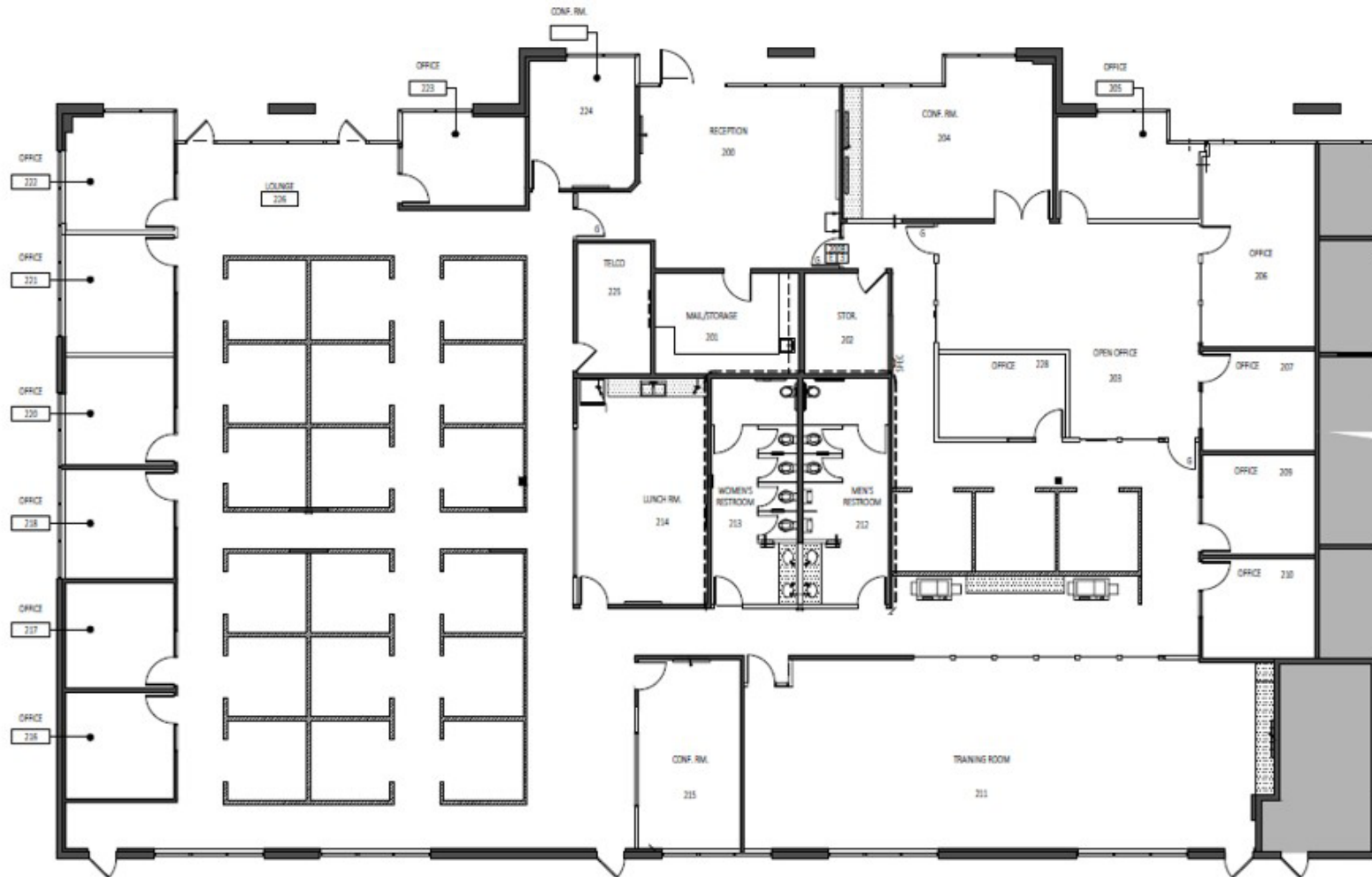
RYAN RUSSELL

Director
Direct: +1 909 942 4697
Mobile: +1 909 480 5244
Ryan.Russell@cushwake.com



Cushman & Wakefield
Of California, Inc.
901 Via Piemonte, Suite 200
Ontario, CA 91764
Lic. #00616335

4120 JURUPA STREET ONTARIO, CA 91761



SEAN KERN
Senior Director
Direct: +1 909 942 4691
Mobile: +1 949 307 6625
Sean.Kern@cushwake.com

RYAN RUSSELL
Director
Direct: +1 909 942 4697
Mobile: +1 909 480 5244
Ryan.Russell@cushwake.com



Cushman & Wakefield
Of California, Inc.
901 Via Piemonte, Suite 200
Ontario, CA 91764
Lic. #00616335



SEAN KERN

Senior Director

Direct: +1 909 942 4691

Mobile: +1 949 307 6625

Sean.Kern@cushwake.com

RYAN RUSSELL

Director

Direct: +1 909 942 4697

Mobile: +1 909 480 5244

Ryan.Russell@cushwake.com

No warranty or representation, express or implied, is made as to the accuracy of the information contained herein, and same is submitted subject to errors and omissions, change of price, rental or other conditions, withdrawal without notice, and to any specific listing conditions, imposed by our principals.



**CUSHMAN &
WAKEFIELD**

Cushman & Wakefield

Of California, Inc.

901 Via Piemonte, Suite 200

Ontario, CA 91764

Lic. #00616335



FOR MORE INFORMATION, CONTACT:

SEAN KERN

Senior Director

Direct: +1 909 942 4691

Mobile: +1 949 307 6625

Sean.Kern@cushwake.com

RYAN RUSSELL

Director

Direct: +1 909 942 4697

Mobile: +1 909 480 5244

Ryan.Russell@cushwake.com

©2025 Cushman & Wakefield. All rights reserved. The information contained in this communication is strictly confidential. This information has been obtained from sources believed to be reliable but has not been verified. NO WARRANTY OR REPRESENTATION, EXPRESS OR IMPLIED, IS MADE AS TO THE CONDITION OF THE PROPERTY (OR PROPERTIES) REFERENCED HEREIN OR AS TO THE ACCURACY OR COMPLETENESS OF THE INFORMATION CONTAINED HEREIN, AND SAME IS SUBMITTED SUBJECT TO ERRORS, OMISSIONS, CHANGE OF PRICE, RENTAL OR OTHER CONDITIONS, WITHDRAWAL WITHOUT NOTICE, AND TO ANY SPECIAL LISTING CONDITIONS IMPOSED BY THE PROPERTY OWNER(S). ANY PROJECTIONS, OPINIONS OR ESTIMATES ARE SUBJECT TO UNCERTAINTY AND DO NOT SIGNIFY CURRENT OR FUTURE PROPERTY PERFORMANCE.

