



CONCORD BUSINESS PARK



TONY BINSWANGER, SIOR
Executive Director
925.627.2482
Tony.Binswanger@cushwake.com
LIC#01861701

TIM SCHMID
Director
925.627.2886
Tim.Schmid@cushwake.com
LIC#01847650

BO HARKINS
Director
925.627.2481
Bo.Harkins@cushwake.com
LIC#01943785

CONCORD BUSINESS PARK

±141,792 square feet of high end, well landscaped business park. The park consists of **five (5) concrete tilt-up office/warehouse buildings** that offers a wide range of sizes and configurations with **grade level loading doors**, ample parking/staging with 360 degree park access. Strategically **located near Highway 4** with great visibility, allowing for **quick access to i-680, Highway 4, and 242.**



*Click available space to view floorplans



CONCORD BUSINESS PARK

TONY BINSWANGER, SIOR
Executive Director
925.627.2482
Tony.Binswanger@cushwake.com
LIC#01861701

TIM SCHMID
Director
925.627.2886
Tim.Schmid@cushwake.com
LIC#01847650

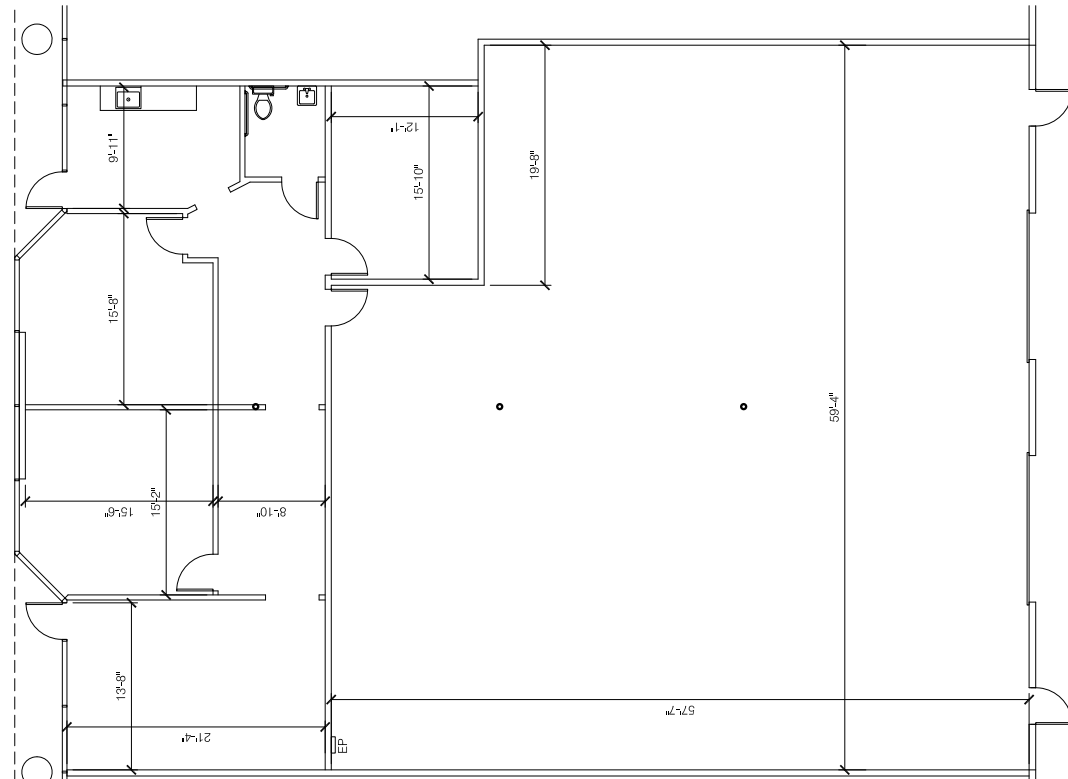
BO HARKINS
Director
925.627.2481
Bo.Harkins@cushwake.com
LIC#01943785



5700 Imhoff Drive - Suite H

±4,864 SF

- ±1,600 SF office
- ±16' clear height
- Three (3) private offices
- Breakroom
- Two (2) grade level doors
- 120/208 volt 3 phase power



CONCORD BUSINESS PARK

TONY BINSWANGER, SIOR
Executive Director
925.627.2482
Tony.Binswanger@cushwake.com
LIC#01861701

TIM SCHMID
Director
925.627.2886
Tim.Schmid@cushwake.com
LIC#01847650

BO HARKINS
Director
925.627.2481
Bo.Harkins@cushwake.com
LIC#01943785

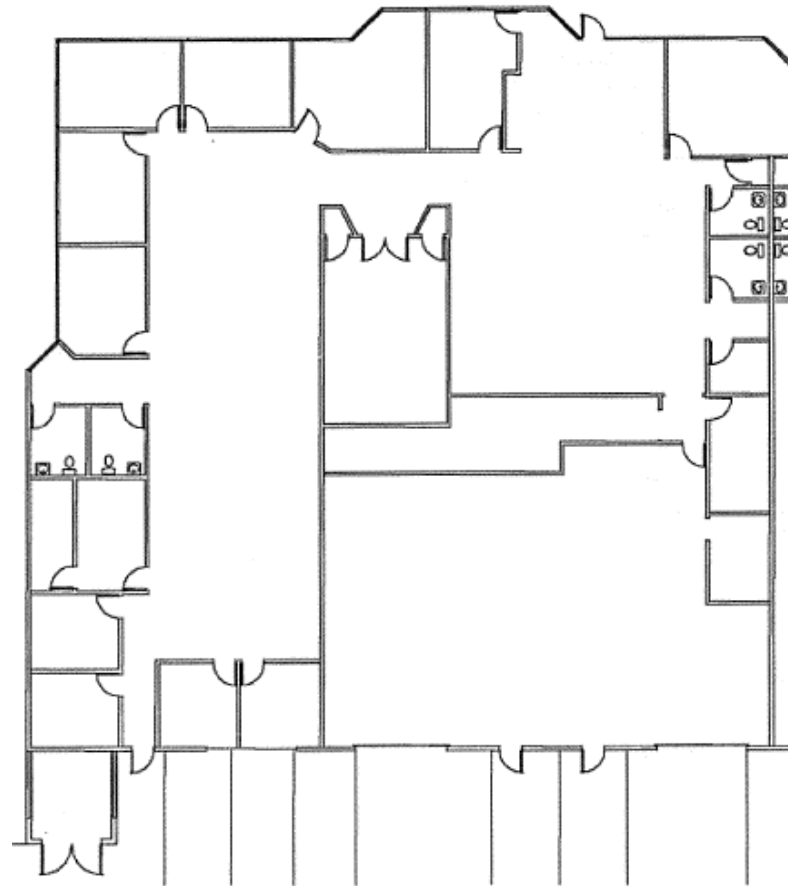


1590 Solano Way - Suite A

±9,962 SF

Available 6/1/19

- 75% Office
- Office can be reduced to 40%
- Two (2) men's & women's restrooms
- Nine (9) private offices
- Large conference room
- Breakroom
- Two (2) grade level doors (Potential for a third)
- ±16' clear height
- 120/208 volt 3 phase power



CONCORD BUSINESS PARK

TONY BINSWANGER, SIOR
Executive Director
925.627.2482
Tony.Binswanger@cushwake.com
LIC#01861701

TIM SCHMID
Director
925.627.2886
Tim.Schmid@cushwake.com
LIC#01847650

BO HARKINS
Director
925.627.2481
Bo.Harkins@cushwake.com
LIC#01943785

