

*FOR LEASE: 66,880 SF (DIVISIBLE)
1125-1129 LESLIE STREET
NORTH YORK, ON*



LESLIE STREET

DON MILLS TRAIL

1129 LESLIE ST
19,903 SF

1127 LESLIE ST
24,024 SF

1125 LESLIE ST
22,953 SF





66,880 SF (DIVISIBLE)

Property Highlights

125-1129 Leslie Street is a three building office/flex office complex. This unique three-building assembly offers a versatile campus environment in the heart of the Don Mills employment hub.. Allowing your business to position itself at the intersection of prestige and practicably. Whether you are looking for a turnkey, high-end flagship office or a functional, cost-effective workspace, this collection provides the perfect “blank canvas” or “move-in ready” solution.

Premium “Flagship” Opportunity: 1125 Leslie Street features a stunning, comprehensive renovation. With modern architectural finishes and upgraded systems, it is designed to impress clients and inspire talent from the moment they walk through the doors.

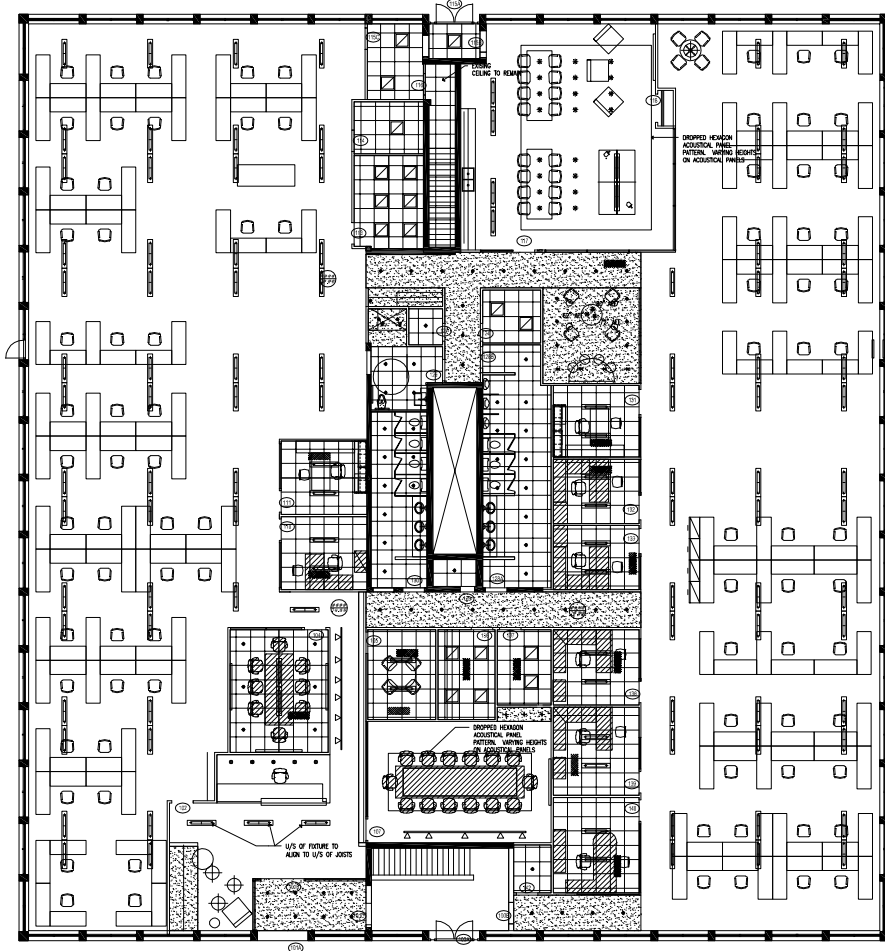
Flexible “Second-Gen” Value: 1127 and 1129 Leslie Street offer high-quality second-generation build-outs. These spaces provide a functional foundation that significantly reduces upfront capital expenditures and accelerates your move-in timeline.

Term: 3-10 years
Net Rent: Call Agents
Additional Rent: \$13.75 + Hydro

AVAILABILITIES: (DIVISIBLE OR COMBINED)

- 1125 Leslie Street - 22,953 SF
- 1127 Leslie Street - 24,024 SF
- 1129 Leslie Street - 19,903 SF

Floor Plan

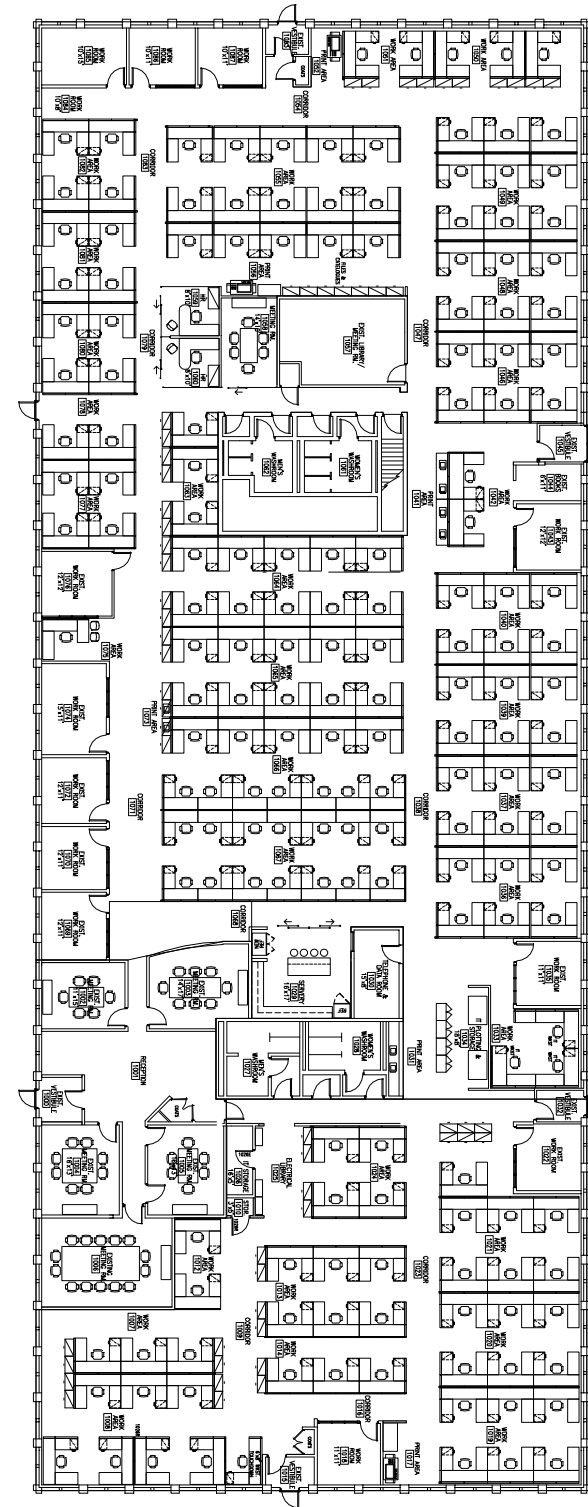


PROPERTY AMENITIES:

- Built out space with open work spaces and large boardroom/meeting room
- Large kitchen for employees

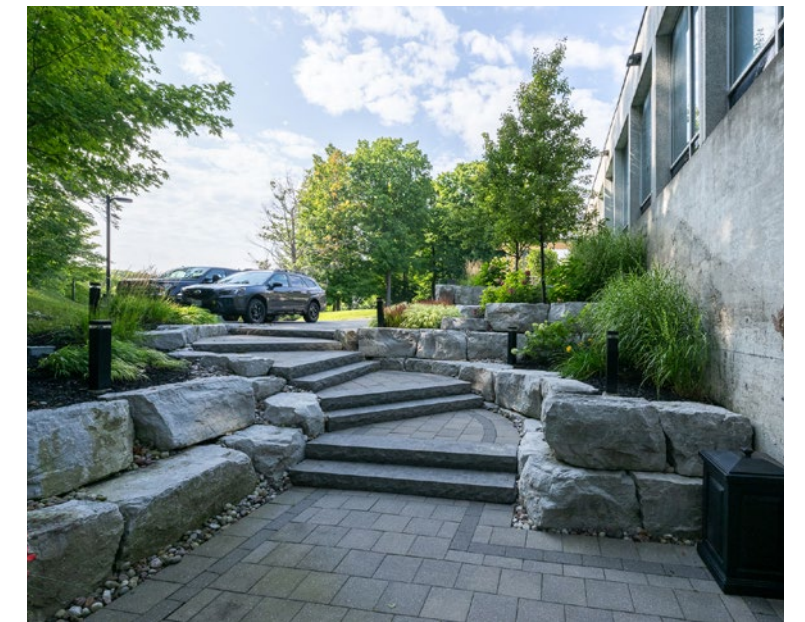


Floor Plan

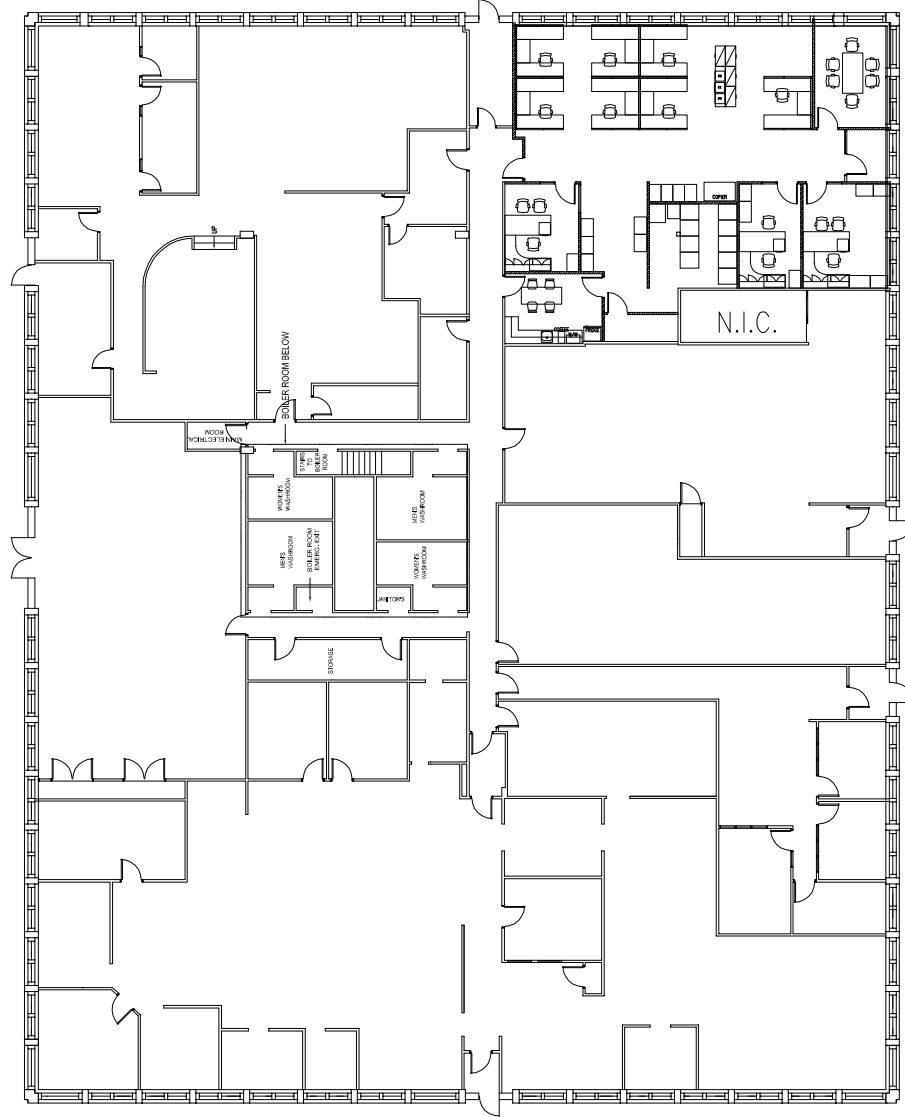


PROPERTY AMENITIES:

- Fully built out with mix of private offices and work stations
- Beautiful natural light and surrounded by trees

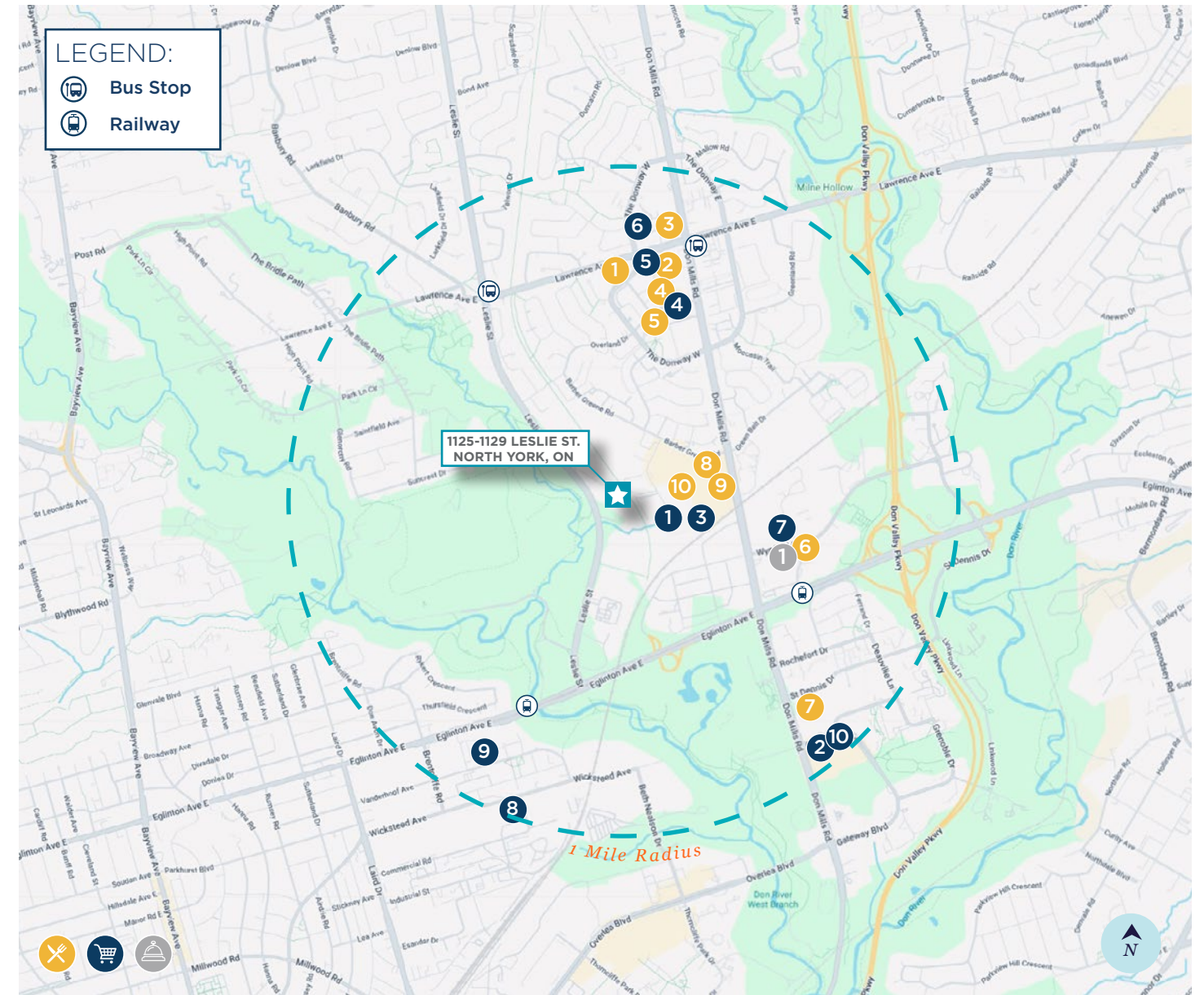


Floor Plan



PROPERTY AMENITIES:

- Newly renovated to a high standard with a mix of open and closed offices.
- Exposed ceilings, high end finishes and substantial natural light looking into the forest.



Area Amenities

RESTAURANTS

1. Congee Queen
2. Starbucks
3. Tim Hortons
4. The Good Son
5. Nome Izaya
6. Tim Hortons
7. Pita Land & Shawarma
8. The Queen Seafood Cuisine
9. Harvey's
10. Asian Legend

RETAIL OPTIONS

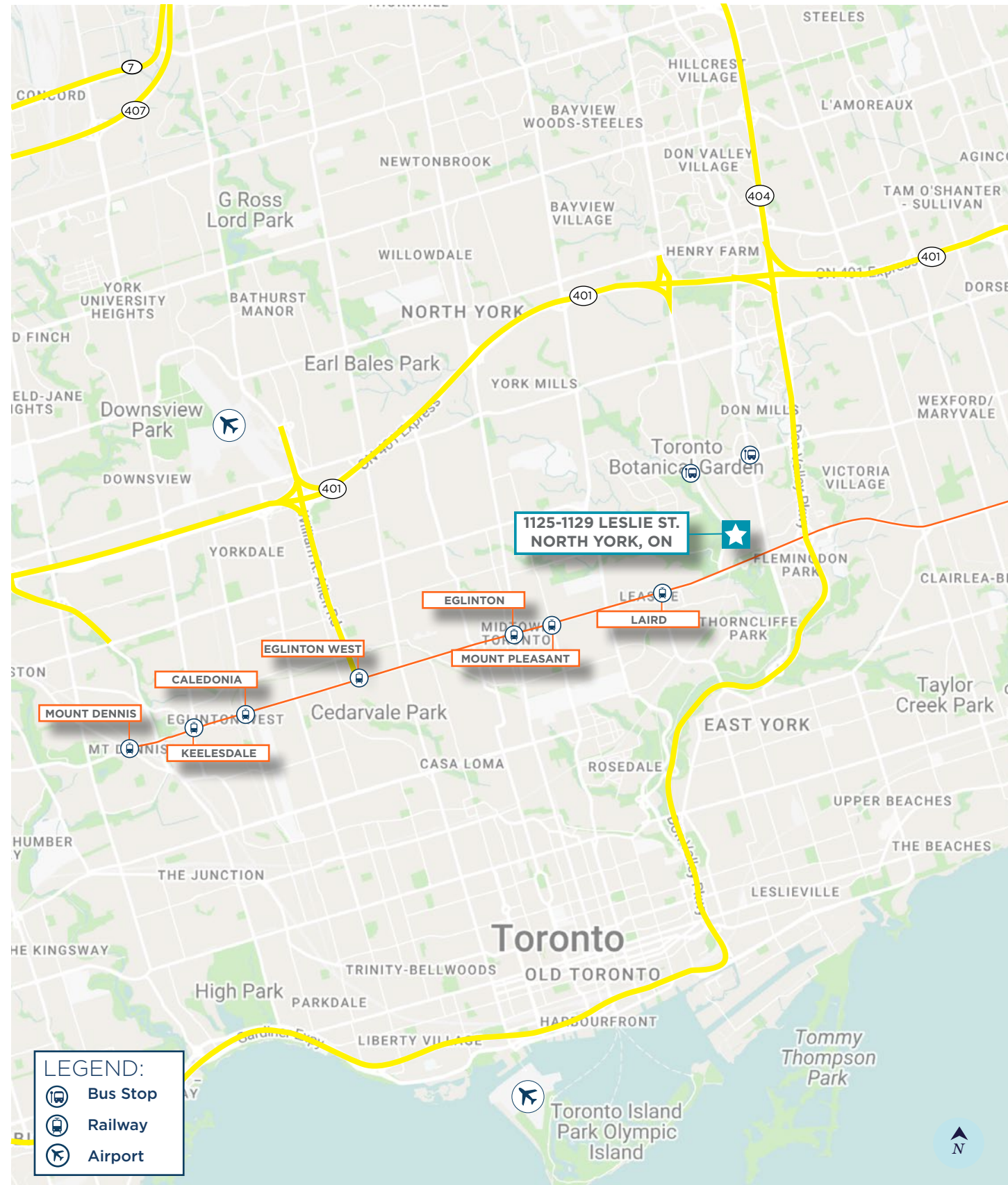
1. Oomomo
2. Flemington Shopping Centre
3. C&C Supermarket
4. CF Shops
5. Eataly
6. Heavenly Denim
7. Joe Fresh
8. The Home Depot
9. HomeSense
10. Sunny Foodmart

HOTELS

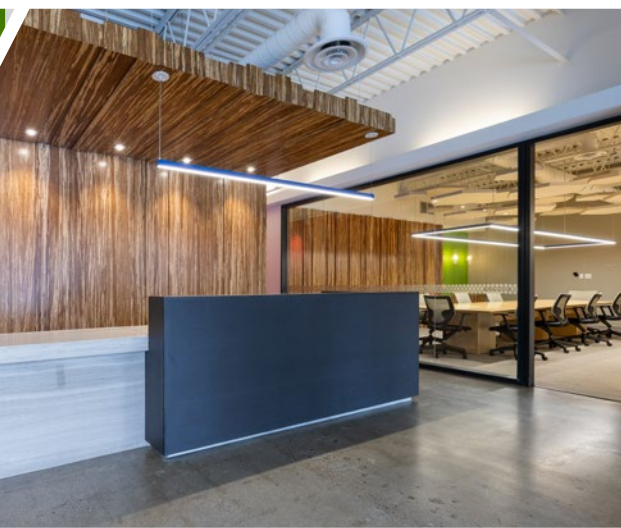
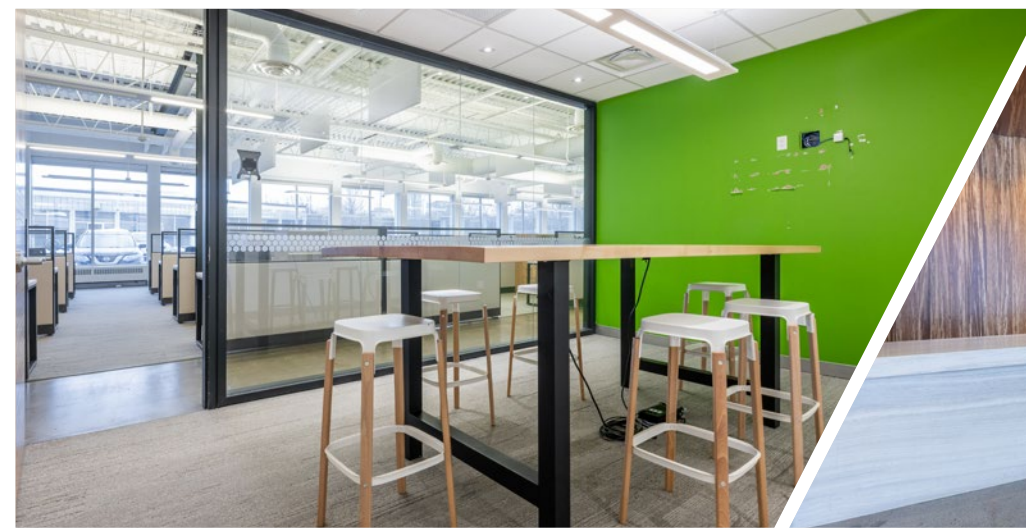
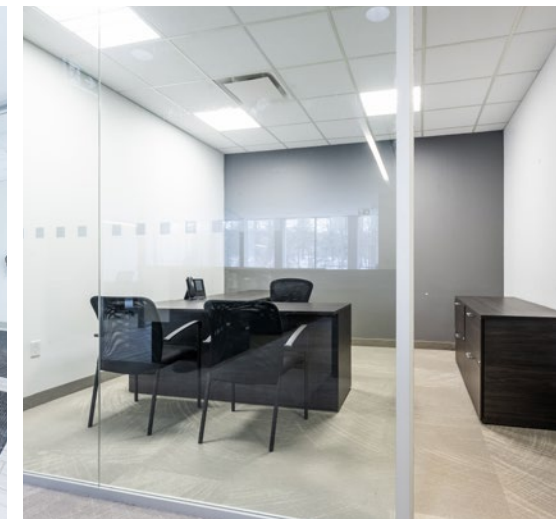
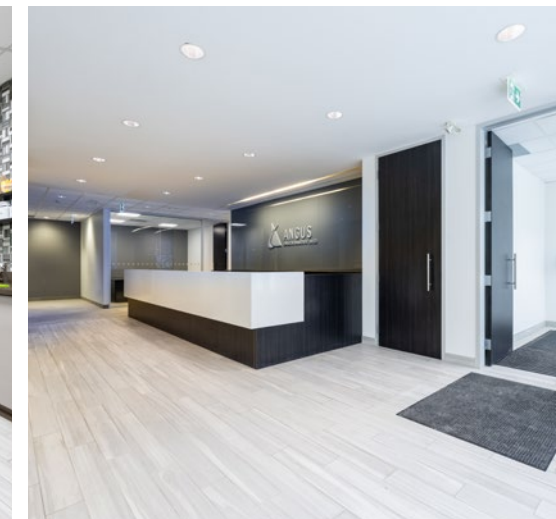
1. Toronto Don Valley Hotel & Suites



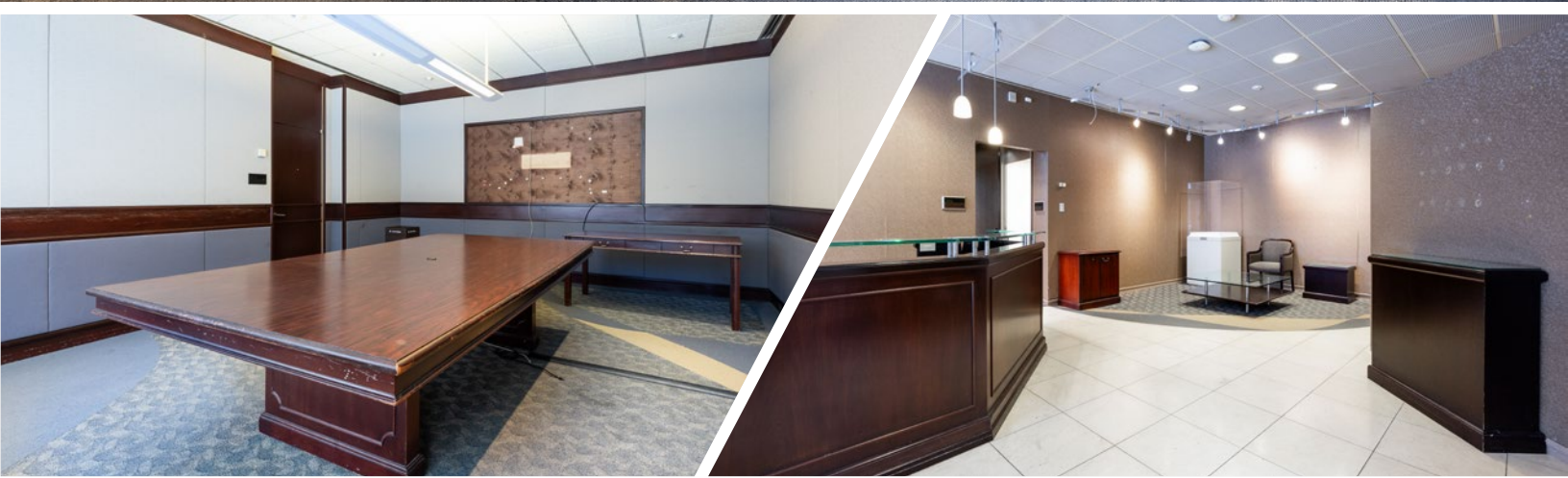
Transit Map



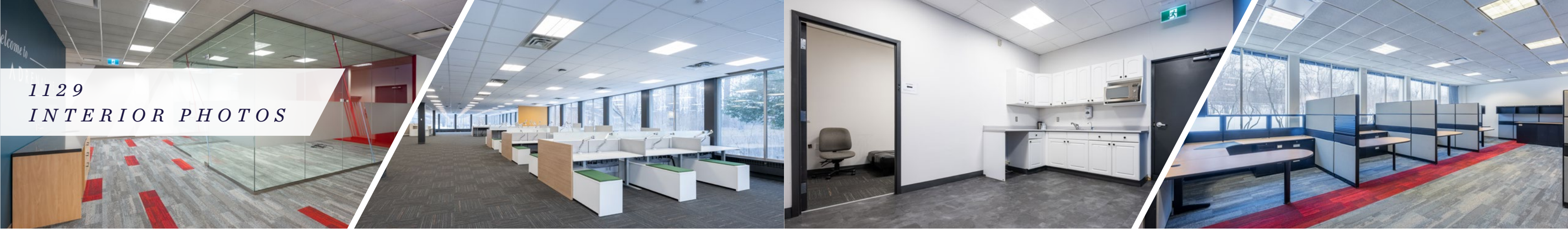
1125 INTERIOR PHOTOS



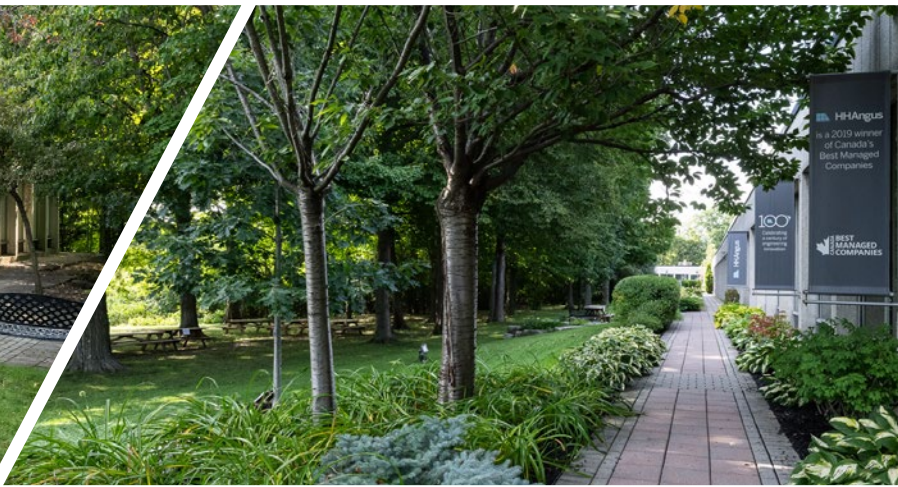
1127
INTERIOR PHOTOS



1129
INTERIOR PHOTOS



EXTERIOR PHOTOS



AERIAL PHOTOS



CONTACT INFORMATION

ALAN RAWN*

Senior Vice President

Direct: +1 416 359 2440

Mobile: +1 647 330 3045

alan.rawn@cushwake.com

LAUREN LUCHINI*

Vice President

Mobile: +1 416 455 5824

lauren.luchini@cushwake.com



©2026 Cushman & Wakefield. All rights reserved. The information contained in this communication is strictly confidential. This information has been obtained from sources believed to be reliable but has not been verified. NO WARRANTY OR REPRESENTATION, EXPRESS OR IMPLIED, IS MADE AS TO THE CONDITION OF THE PROPERTY (OR PROPERTIES) REFERENCED HEREIN OR AS TO THE ACCURACY OR COMPLETENESS OF THE INFORMATION CONTAINED HEREIN, AND SAME IS SUBMITTED SUBJECT TO ERRORS, OMISSIONS, CHANGE OF PRICE, RENTAL OR OTHER CONDITIONS, WITHDRAWAL WITHOUT NOTICE, AND TO ANY SPECIAL LISTING CONDITIONS IMPOSED BY THE PROPERTY OWNER(S). ANY PROJECTIONS, OPINIONS OR ESTIMATES ARE SUBJECT TO UNCERTAINTY AND DO NOT SIGNIFY CURRENT OR FUTURE PROPERTY PERFORMANCE. *Sales Representative