

FOR LEASE

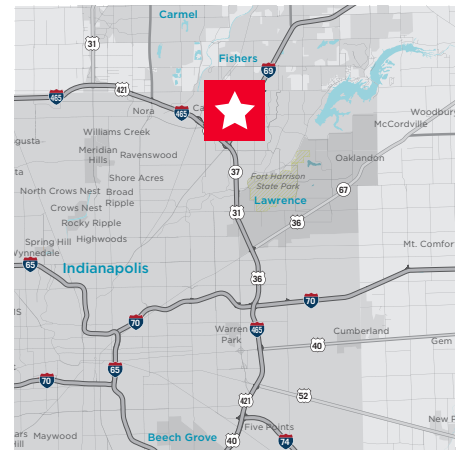
# 8904 Bash Street

Indianapolis, IN 46268



## Northeast Business Center Office/Warehouse Facility

- Total Building** 36,256 total SF
- Availability** Suite J: 11,545 SF
- Loading** One (1) dock / Two (2) drive-in
- Zoning** I-3
- Fire Protection** Wet-Pipe sprinkler system
- Ceiling Height** 14' clear height
- Year Built** 1989
- Other** Individual exterior entries, convenient I-465 access, close local amenities
- Asking Rate:** \$9.95/SF NNN
- OPEX:** \$4.43/SF



For more information, contact:

**Michael W.M. Weishaar, SIOR**  
+1 317 639 0494  
michael.weishaar@cushwake.com

**Todd T. Vannatta, SIOR**  
+1 317 639 0455  
todd.vannatta@cushwake.com

One American Square, Suite 1800  
Indianapolis, IN 46282

Main: +1 317 634 6363

Fax: +1 317 639 0504

[cushmanwakefield.com](http://cushmanwakefield.com)



FOR LEASE

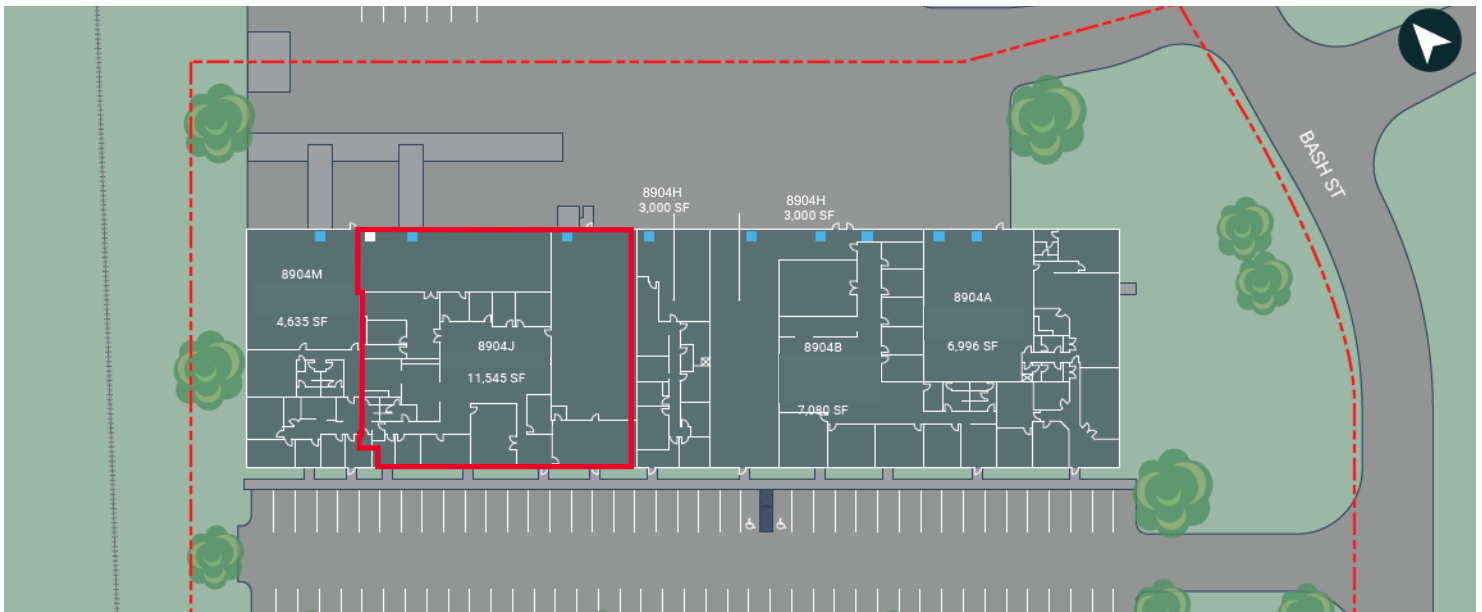
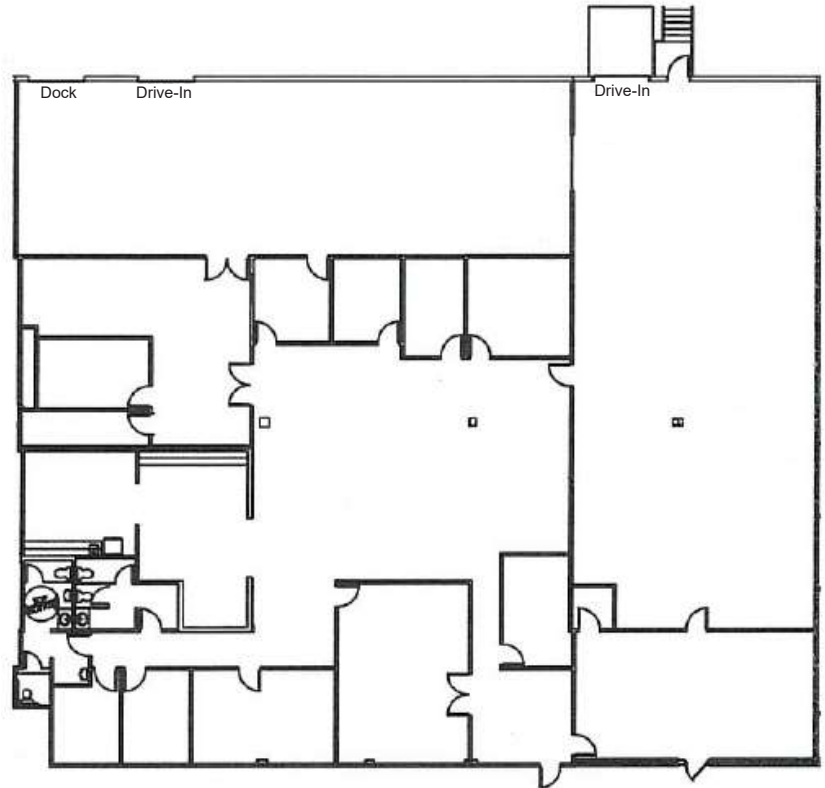
# 8904 Bash Street

Indianapolis, IN 46268



## Suite 8904

- 11,545 SF available
- 5,070 SF of warehouse
- 6,475 SF of office build-out
- One (1) dock / Two (2) drive-ins
- 14' clear height



For more information contact:

**Michael W.M. Weishaar, SIOR**  
Vice Chair  
+1 317 639 0494  
michael.weishaar@cushwake.com

**Todd T. Vannatta, SIOR**  
Executive Director  
+1 317 639 0455  
todd.vannatta@cushwake.com

One American Square  
Suite 1800  
Indianapolis, IN 46282  
cushmanwakefield.com