

GOLDEN VALLEY II

MN
NW

6325 Sandburg Road
Golden Valley, MN



FOR LEASE

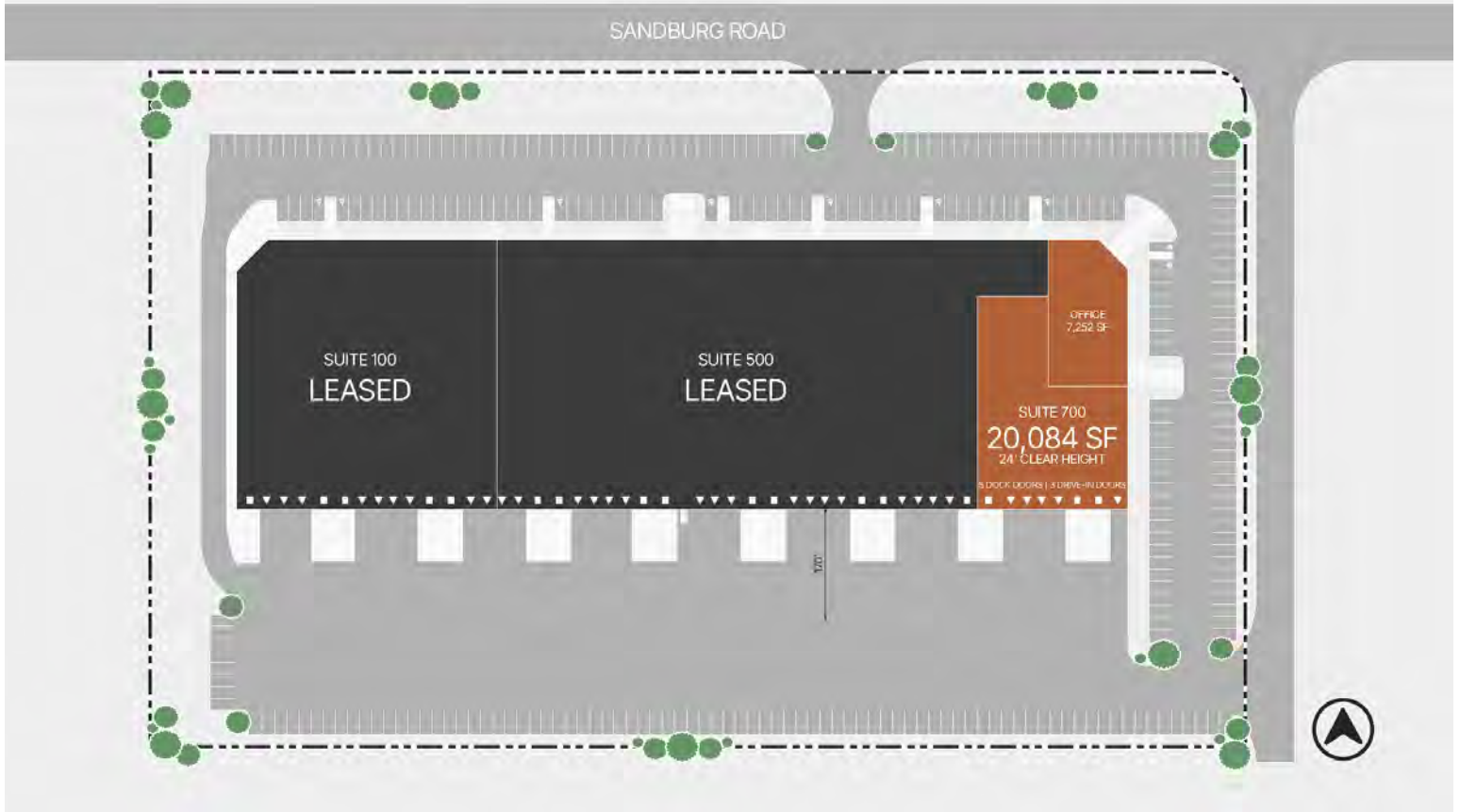
20,084 SF

SUITE 700



LEASED BY





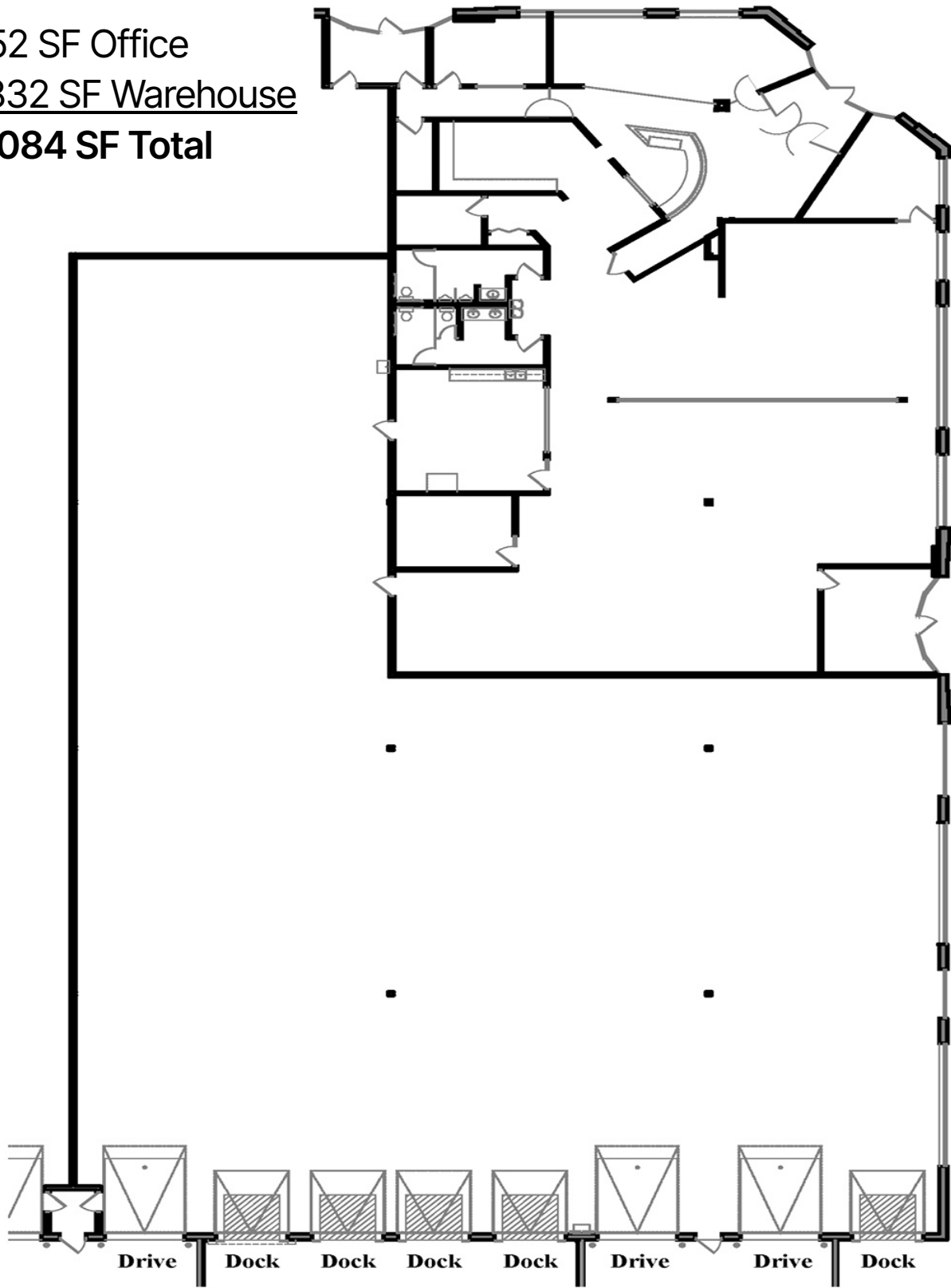
PROPERTY HIGHLIGHTS

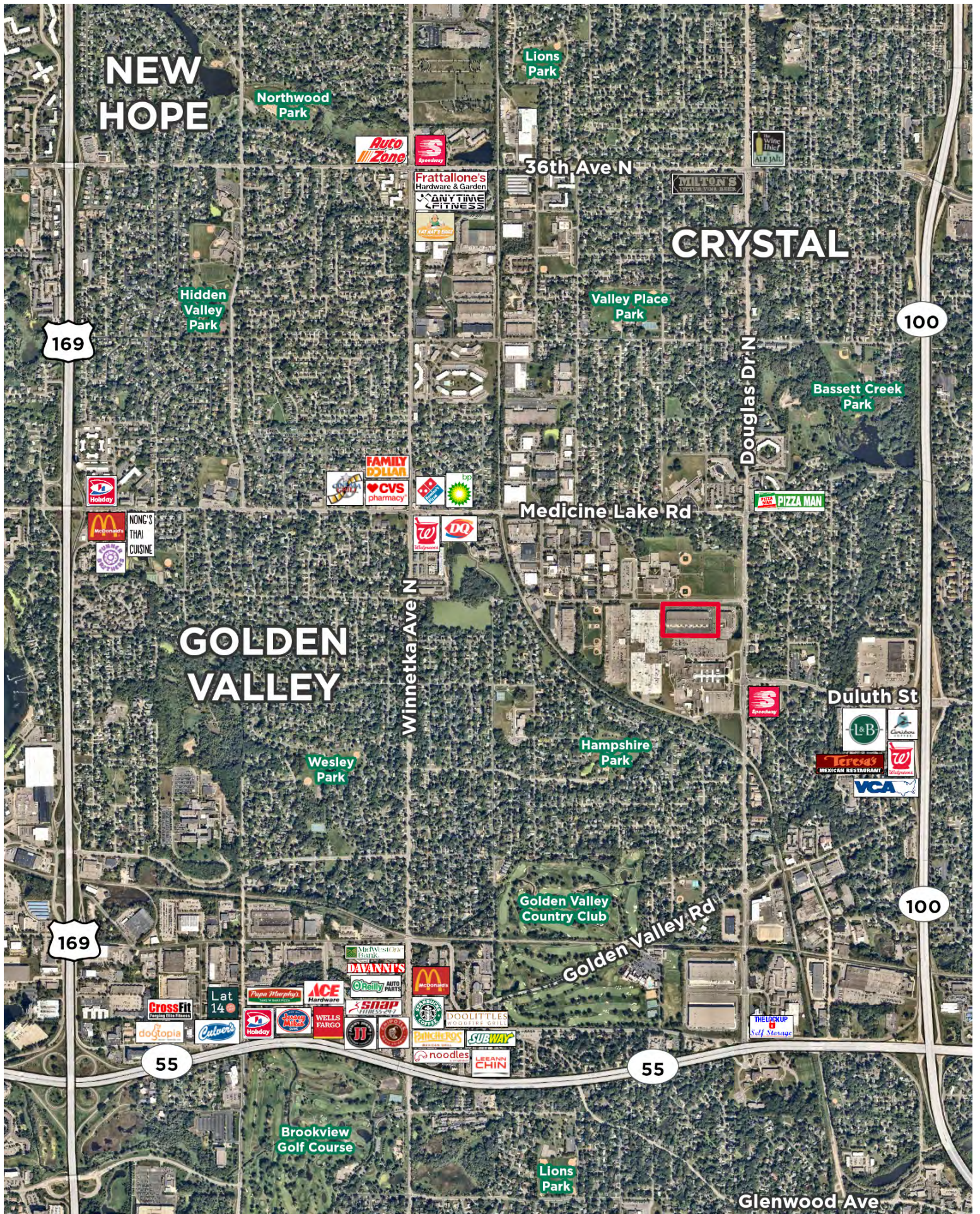
- End cap with great glass line
- State of the art facility
- Ample parking
- Direct access to Hwy 100
- Ample loading
- Trailer parking available



Building Size	131,121 SF
Year Built	2001
Clear Height	24'
Lease Rate	Negotiable
Tax & Cam	\$5.13 PSF
Available Space	Suite 700 7,252 SF Office 12,832 SF Warehouse 20,084 SF Total
Loading	Suite 700 5 dock doors 3 drive-in doors

7,252 SF Office
12,832 SF Warehouse
20,084 SF Total





CONTACT INFORMATION

6325 Sandburg Road
Golden Valley, MN

Jason Meyer

jason.j.meyer@cushwake.com
952 820 8735

Danny McNamara

danny.mcnamara@cushwake.com
952 456 7890

Brent Masica

brent.masica@cushwake.com
952 893 8231

Judd Fenlon

judd.fenlon@cushwake.com
612 231 9606

This is not an offer or acceptance of an offer to lease space. A lease will only be offered or made in a written agreement signed by landlord. No representation or warranty of any kind is made by landlord unless set forth in a written definitive lease executed by the landlord.



LEASED BY

