



FOR LEASE

WESTBAY

CORPORATE CENTER

9400 - 9745 INTERNATIONAL CT N
ST. PETERSBURG, FL 33716

FOR MORE INFORMATION, CONTACT:

SAM KOROLOS

Director
+1 704 989 1327
sam.korolos@cushwake.com

MELISSA WATTERWORTH

Senior Associate
+1 813 599 2190
melissa.watterworth@cushwake.com

LISA ROSS, SIOR

Executive Director
+1 813 760 3209
lisa.ross@cushwake.com



**CUSHMAN &
WAKEFIELD**



WESTBAY CORPORATE CENTER



PROPERTY FEATURES

BUILDING #1 | 9400 International Ct N

Building Size	53,326 SF
Clear Height	18'
Loading	Dock-High
Parking Ratio	1.88/1,000

BUILDING #2 | 9500 International Ct N

Building Size	45,503 SF
Clear Height	16'
Loading	Grade-Level
Parking Ratio	3.20/1,000

BUILDING #3 | 9700 International Ct N

Building Size	60,181 SF
Clear Height	18'
Loading	Dock-High
Parking Ratio	1.55/1,000



BUILDING 1

SUITE 9422-9428

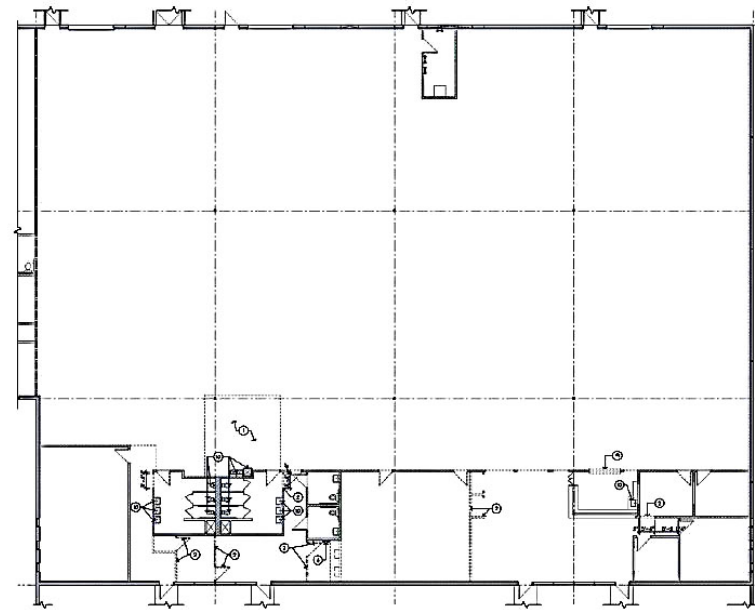


SPACE FEATURES

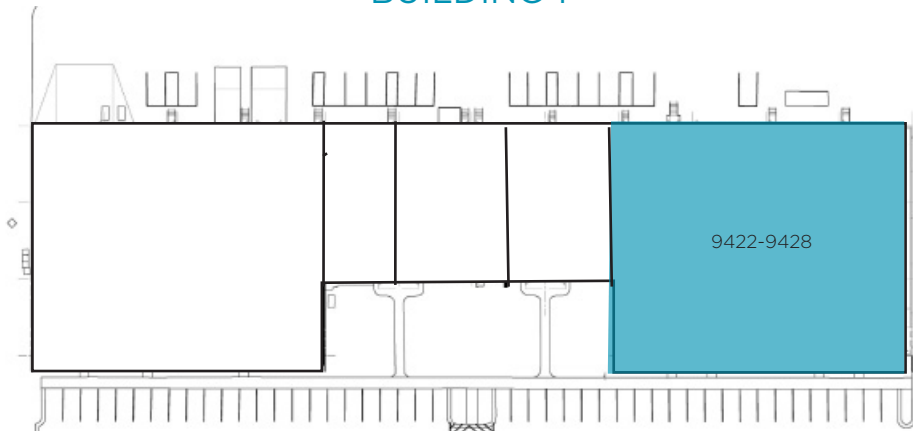
SF AVAILABLE	20,000 SF
OFFICE AREA	+/- 4,200 SF
CLEAR HEIGHT	18'
LOADING	(3) Dock High Doors
WAREHOUSE AC	Climate Controlled
AVAILABILITY	Available Now

SITE PLAN / FLOOR PLAN

SUITE 9422-9428



BUILDING 1



BUILDING 2

SUITE 9501



SPACE FEATURES

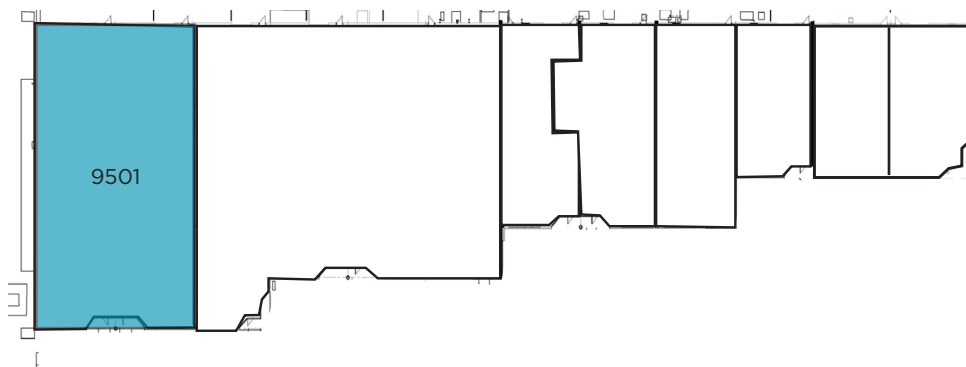
SITE PLAN / FLOOR PLAN

SF AVAILABLE	10,170 SF
OFFICE AREA	~8,970 SF
CLEAR HEIGHT	16'
LOADING	One (1) Grade Level Door
AVAILABILITY	8/1/2026

SUITE 9501



BUILDING 2



**Landlord is open to pulling back some office*

BUILDING 2

SUITE 9543

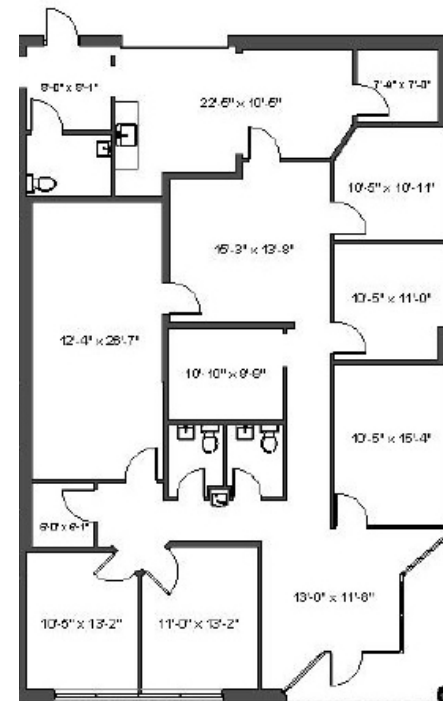


SPACE FEATURES

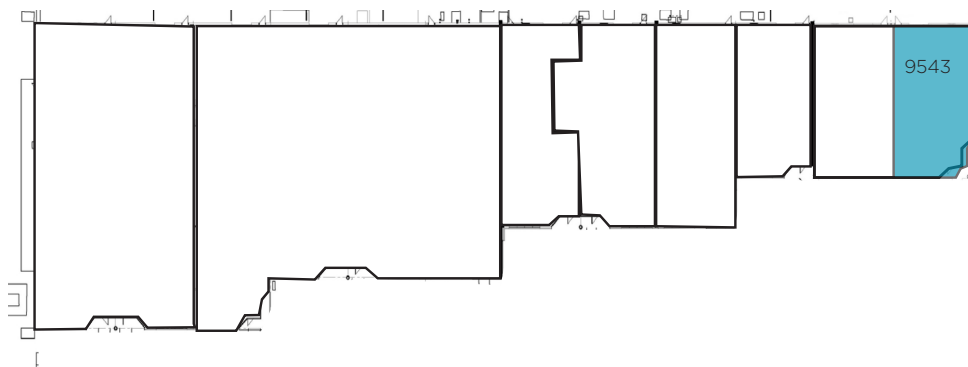
SF AVAILABLE	2,600 SF
OFFICE AREA	100% Office
CLEAR HEIGHT	16'
AVAILABILITY	Available Now

SITE PLAN / FLOOR PLAN

SUITE 9543



BUILDING 2



BUILDING 3

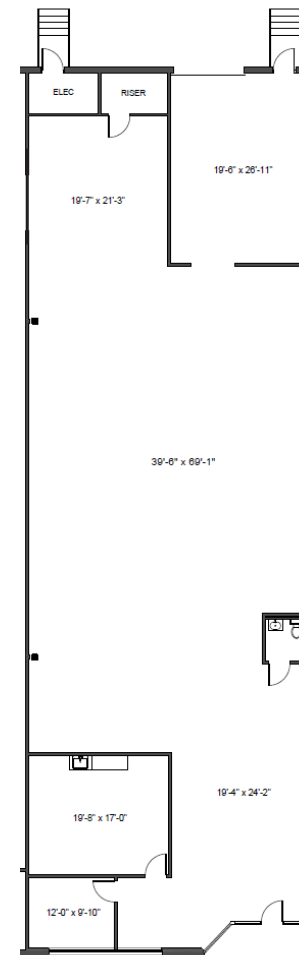
SUITE 9725



SPACE FEATURES

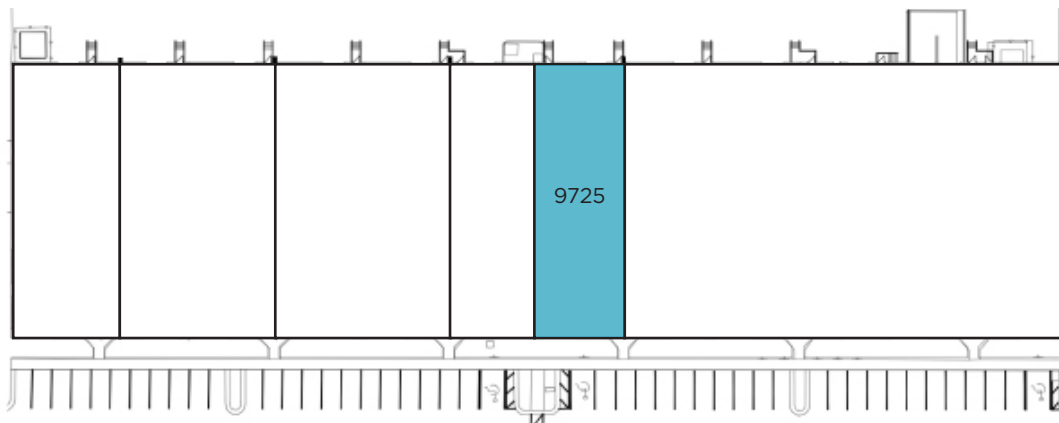
SITE PLAN / FLOOR PLAN

SF AVAILABLE	5,000 SF
OFFICE AREA	+/- 450 SF
CLEAR HEIGHT	18'
LOADING	One (1) Dock High Door
AVAILABILITY	Available Now



SUITE 9725

BUILDING 3



AMENITIES MAP



Shell Publix
TIJUANA FLATS SMOOTHIE KING

Wawa Culver's
Pizza Hut Starbucks
McDonald's SUBWAY

PETSMART HomeGoods
7-ELEVEN TARGET
FIVE BELOW CVS T.J. MAXX

WESTBAY CORPORATE CENTER



For more information, please contact:

SAM KOROLOS

Director
sam.korolos@cushwake.com
+1 704 989 1327

MELISSA WATTERWORTH

Senior Associate
melissa.watterworth@cushwake.com
+1 813 599 2190

LISA ROSS, SIOR

Executive Director
lisa.ross@cushwake.com
+1 813 760 3209

©2026 CUSHMAN & WAKEFIELD. ALL RIGHTS RESERVED. THE INFORMATION CONTAINED IN THIS COMMUNICATION IS STRICTLY CONFIDENTIAL. THIS INFORMATION HAS BEEN OBTAINED FROM SOURCES BELIEVED TO BE RELIABLE BUT HAS NOT BEEN VERIFIED. NO WARRANTY OR REPRESENTATION, EXPRESS OR IMPLIED, IS MADE AS TO THE CONDITION OF THE PROPERTY (OR PROPERTIES) REFERENCED HEREIN OR AS TO THE ACCURACY OR COMPLETENESS OF THE INFORMATION CONTAINED HEREIN, AND SAME IS SUBMITTED SUBJECT TO ERRORS, OMISSIONS, CHANGE OF PRICE, RENTAL OR OTHER CONDITIONS, WITHDRAWAL WITHOUT NOTICE, AND TO ANY SPECIAL LISTING CONDITIONS IMPOSED BY THE PROPERTY OWNER(S). ANY PROJECTIONS, OPINIONS OR ESTIMATES ARE SUBJECT TO UNCERTAINTY AND DO NOT SIGNIFY CURRENT OR FUTURE PROPERTY PERFORMANCE.

