



FOR SUBLEASE

49
Bathurst Street

BUILDING OVERVIEW

SIZE: Suite 300 – Up to 5,750 SF
Flexible Leasing Options Available – Full Floor or Shared Premises.

NET RENT: Please Contact Listing Agent

ADDITIONAL RENT: \$11.60 PSF (2026)
Excluding utilities and janitorial

OCCUPANCY: Immediate

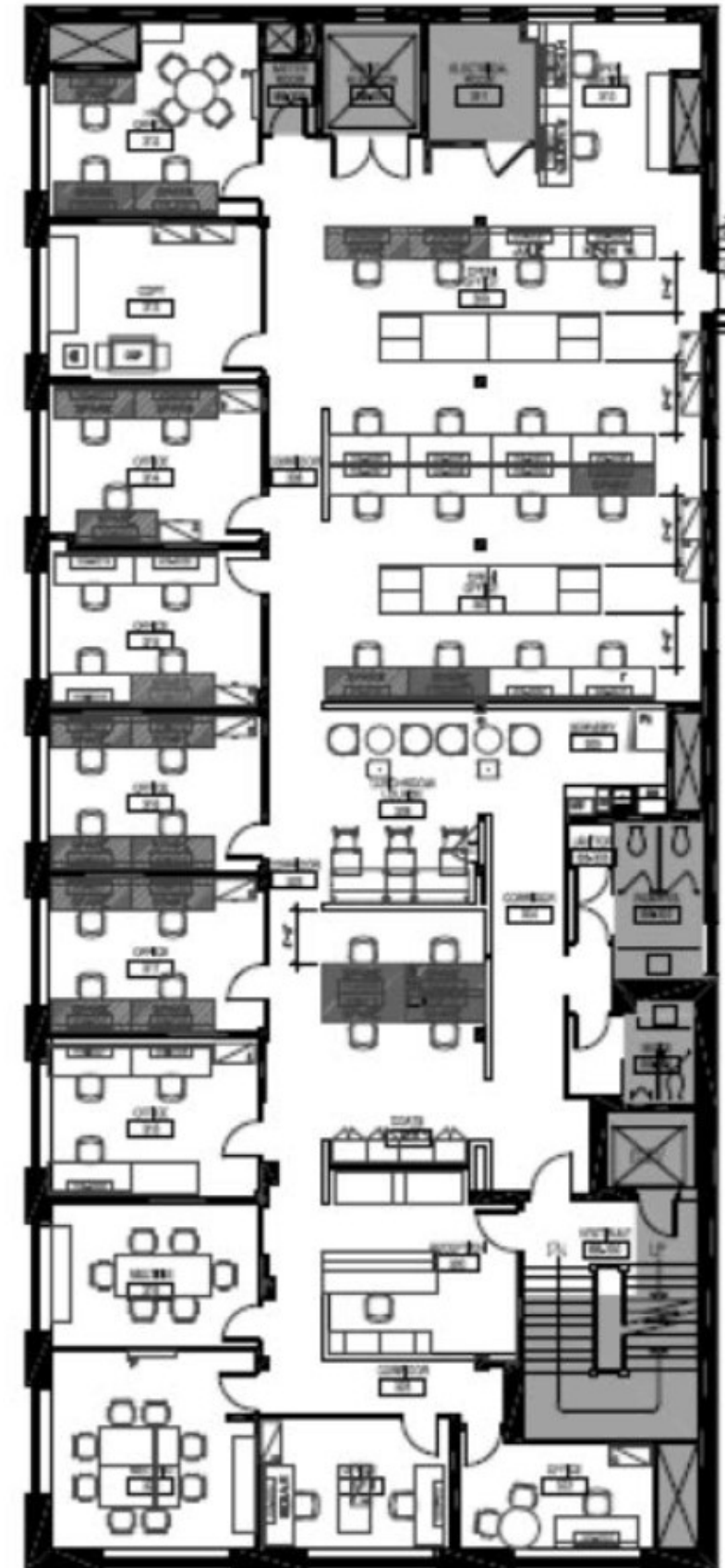
SUBLEASE TERM: June 29, 2028

PROPERTY HIGHLIGHTS

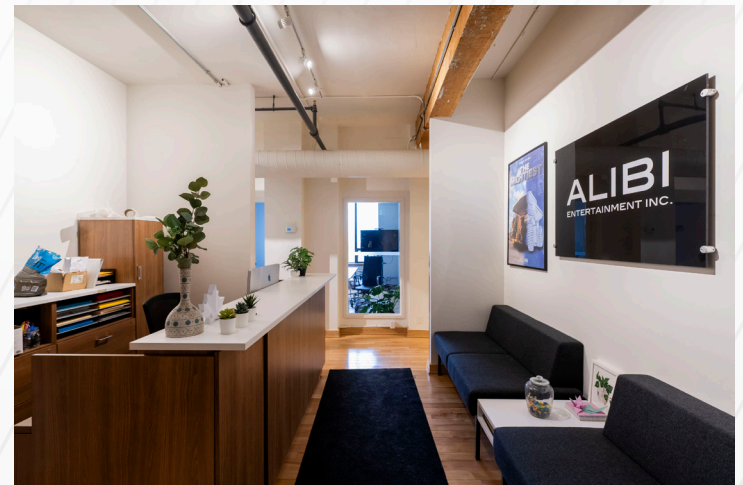
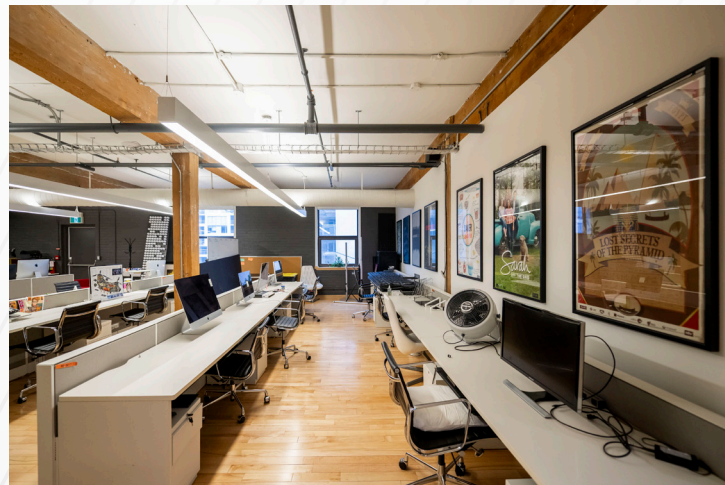
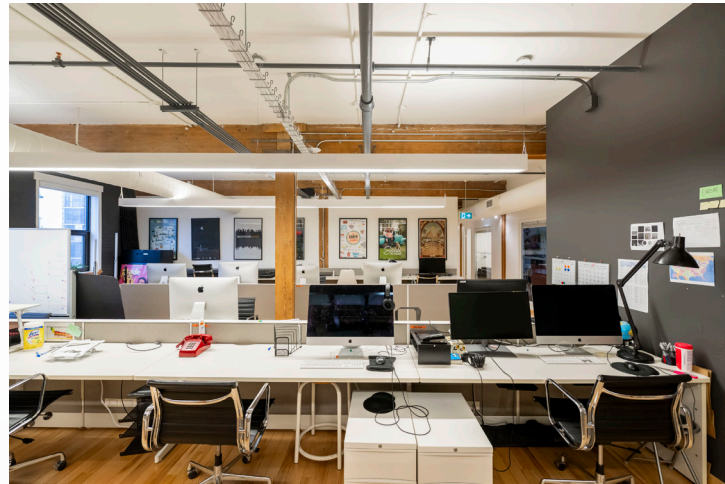
- Flexible leasing opportunity – sublandlord is open to full-floor or shared space users
- Full-floor opportunity in authentic brick-and-beam construction with exposed wood ceilings
- Turnkey, fully built-out premises featuring a mix of private window offices, boardrooms, open workspace, lounge area, in-suite washrooms, and reception
- Plug-and-play installation with furniture available for immediate occupancy
- Transit-oriented location at Bathurst & Wellington - TTC bus at the doorstep and steps to streetcar service
- On-site parking available - up to 4 spaces at market rates
- Surrounded by downtown Toronto’s best restaurants and amenities

FLOOR PLAN

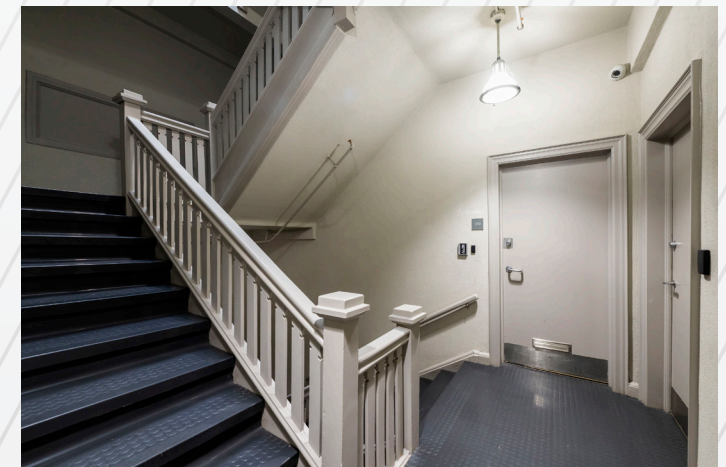
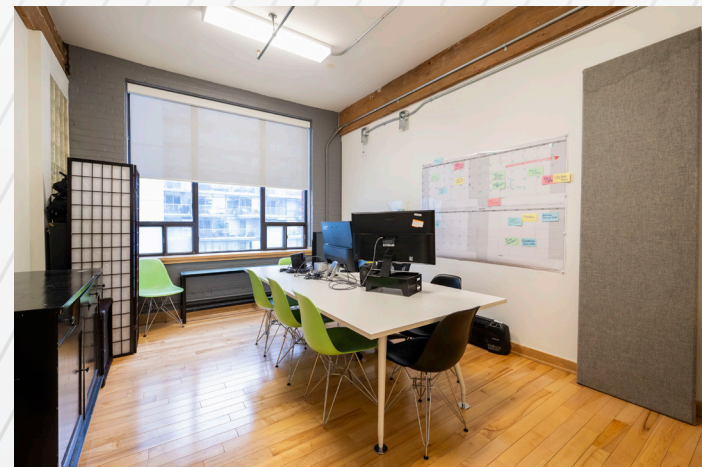
Suite 300 – Up to 5,750 SF



INTERIOR PHOTOS



INTERIOR PHOTOS





CONTACT

CAMERON MITCHELL
Senior Vice President
Direct: 416 359 2445
Mobile: 416 786 0500
cam.mitchell@cushwake.com

©2026 Cushman & Wakefield. All rights reserved. The material in this presentation has been prepared solely for information purposes, and is strictly confidential. Any disclosure, use, copying or circulation of this presentation (or the information contained within it) is strictly prohibited, unless you have obtained Cushman & Wakefield's prior written consent. The views expressed in this presentation are the views of the author and do not necessarily reflect the views of Cushman & Wakefield. Neither this presentation nor any part of it shall form the basis of, or be relied upon in connection with any offer, or act as an inducement to enter into any contract or commitment whatsoever. NO REPRESENTATION OR WARRANTY IS GIVEN, EXPRESS OR IMPLIED, AS TO THE ACCURACY OF THE INFORMATION CONTAINED WITHIN THIS PRESENTATION, AND CUSHMAN & WAKEFIELD IS UNDER NO OBLIGATION TO SUBSEQUENTLY CORRECT IT IN THE EVENT OF ERRORS.

